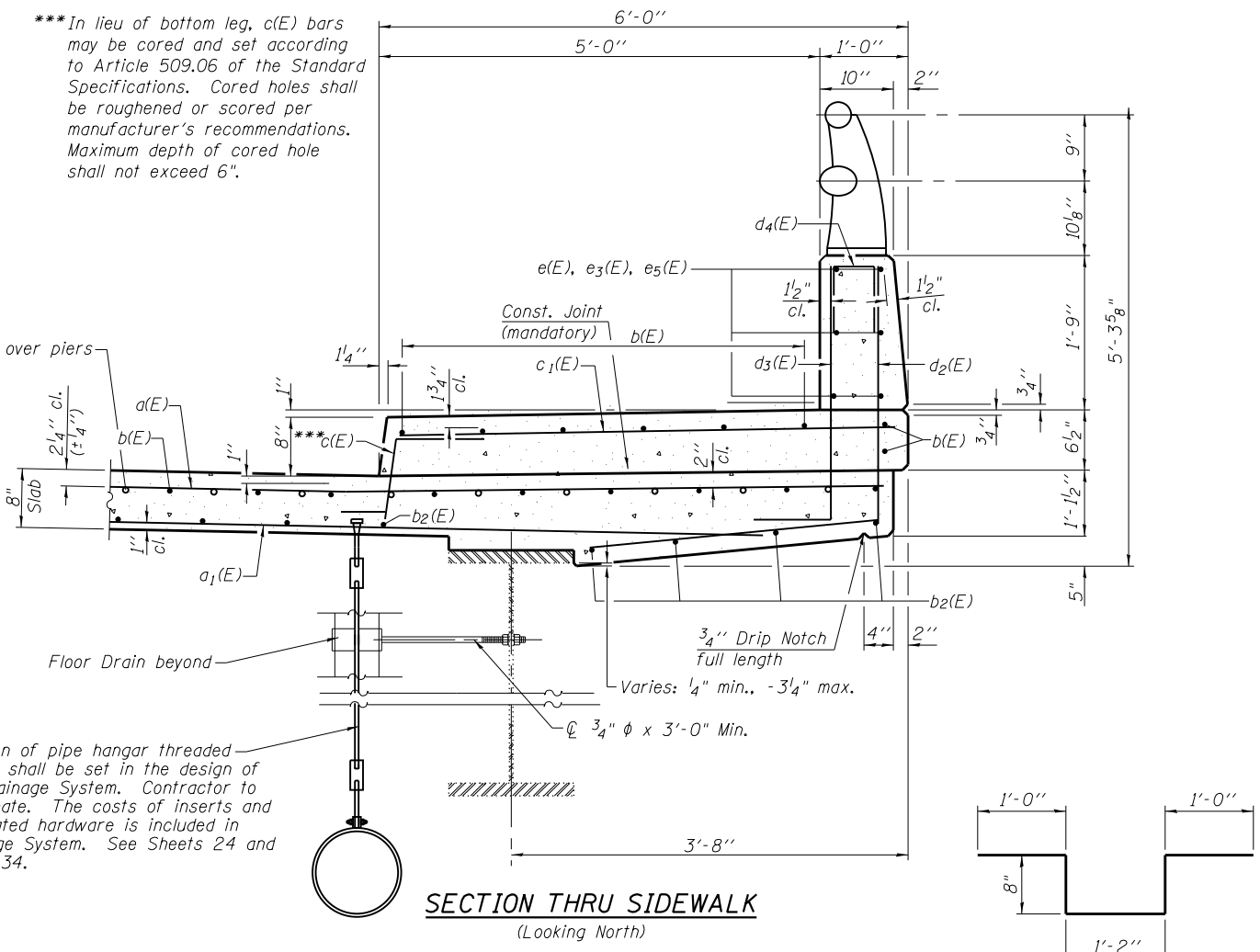


**SECTION THRU PARAPET**  
(Looking North)

\*See Sheet 9 of 34 for Floor Drain details. Length of Floor Drain pipes shall be set in the design of the Drainage System. Contractor to coordinate.

\*\*\*In lieu of bottom leg, c(E) bars may be cored and set according to Article 509.06 of the Standard Specifications. Cored holes shall be roughened or scored per manufacturer's recommendations. Maximum depth of cored hole shall not exceed 6".

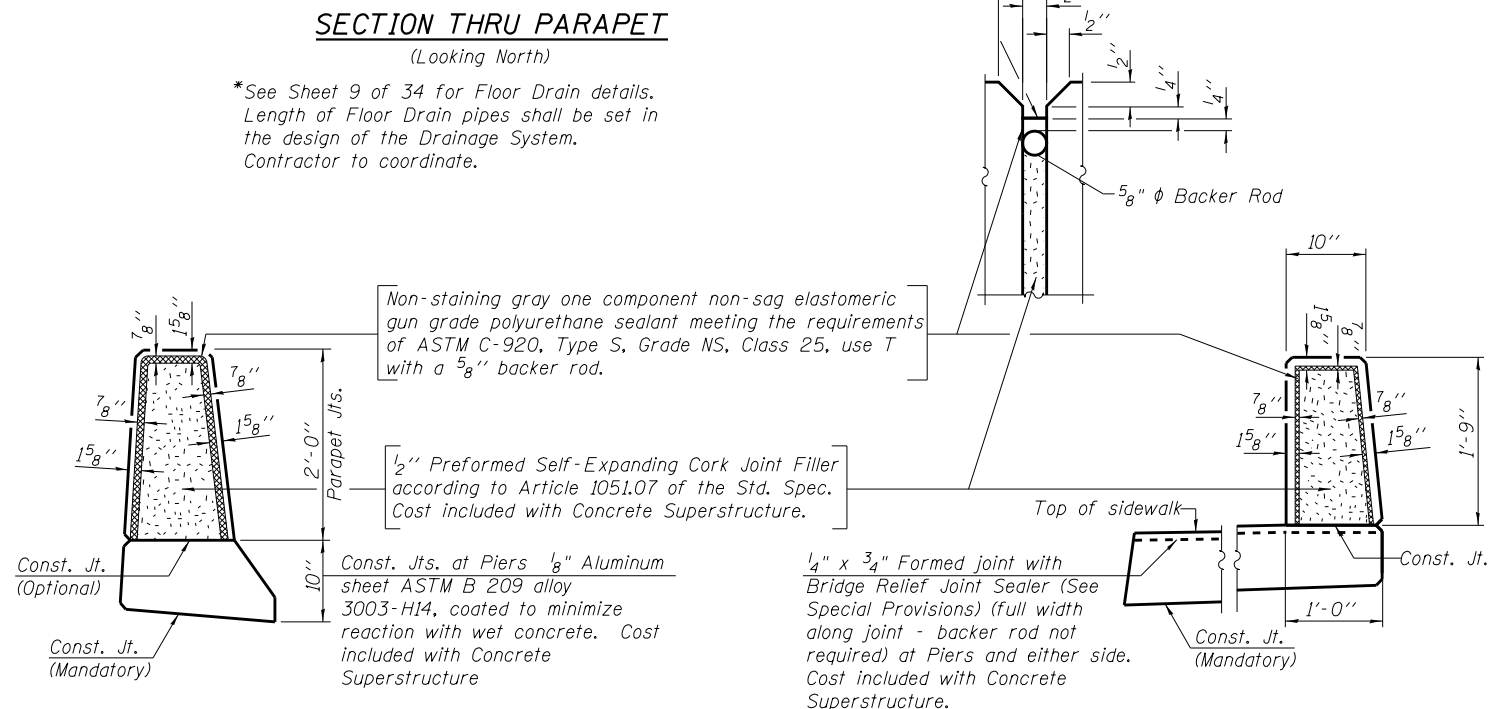


**SECTION THRU SIDEWALK**  
(Looking North)

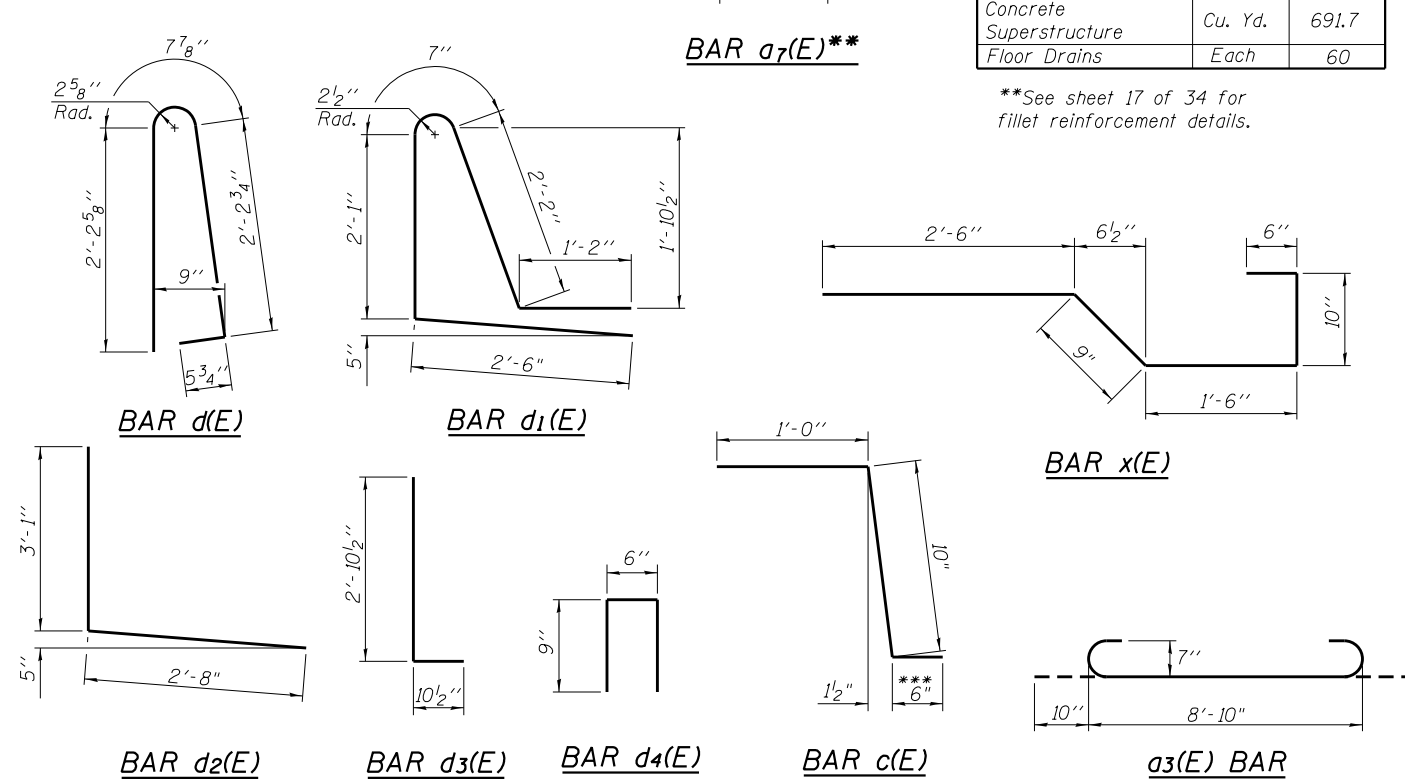
**SUPERSTRUCTURE  
BILL OF MATERIAL**

Bar	No.	Size	Length	Shape
a(E)	1051	#6	37'-5"	—
a <sub>1</sub> (E)	827	#5	36'-3"	—
a <sub>2</sub> (E)	526	#6	6'-6"	—
a <sub>3</sub> (E)	21	#7	10'-6"	U
a <sub>4</sub> (E)	1	#7	36'-3"	—
a <sub>7</sub> (E)	596	#4	4'-6"	U
b(E)	912	#5	27'-10"	—
b <sub>1</sub> (E)	114	#6	33'-7"	—
b <sub>2</sub> (E)	810	#5	29'-3"	—
b <sub>7</sub> (E)	32	#4	39'-0"	—
c(E)	483	#5	2'-4"	L
c <sub>1</sub> (E)	483	#5	5'-8"	—
d(E)	526	#5	5'-7"	L
d <sub>1</sub> (E)	526	#5	8'-3"	L
d <sub>2</sub> (E)	483	#4	5'-9"	L
d <sub>3</sub> (E)	483	#6	3'-9"	L
d <sub>4</sub> (E)	114	#4	2'-0"	L
d <sub>5</sub> (E)	12	#6	4'-0"	L
d <sub>6</sub> (E)	20	#6	8'-11"	L
e(E)	182	#4	17'-10"	—
e <sub>1</sub> (E)	10	#8	29'-7"	—
e <sub>2</sub> (E)	10	#4	27'-1"	—
e <sub>3</sub> (E)	44	#4	19'-9"	—
e <sub>4</sub> (E)	4	#8	19'-9"	—
e <sub>5</sub> (E)	92	#4	18'-3"	—
e <sub>6</sub> (E)	6	#8	29'-0"	—
e <sub>7</sub> (E)	6	#4	26'-4"	—
e <sub>8</sub> (E)	12	#4	12'-3"	—
e <sub>9</sub> (E)	24	#4	12'-9"	—
x(E)	78	#5	6'-1"	U
Reinforcement Bars, Epoxy Coated		Pound	178,670	
Concrete Superstructure		Cu. Yd.	691.7	
Floor Drains		Each	60	

\*\*See sheet 17 of 34 for fillet reinforcement details.



**PARAPET JOINT DETAILS**



BLANK, WESSELINK, COOK & ASSOCIATES DECATUR, ILLINOIS ENGINEERS - CONSULTANTS DESIGN FIRM NO. 184000894

FILE NAME =	USER NAME =	DESIGNED <b>PBB</b>	REVISED -
		CHECKED <b>MCB</b>	REVISED -
		DRAWN <b>MLO</b>	REVISED -
		CHECKED <b>PBB/MCB</b>	REVISED -

**STATE OF ILLINOIS  
DEPARTMENT OF TRANSPORTATION**

**SUPERSTRUCTURE DETAILS  
STRUCTURE NO. 058-0010**

F.A.P. RTE.	SECTION	COUNTY	TOTAL SHEETS	SHEET NO.
710	(48X-B-2)BR & (48BR)BR	MACON	144	88
CONTRACT NO. 74438				

SHEET NO. 11 OF 34 SHEETS

ILLINOIS FED. AID PROJECT