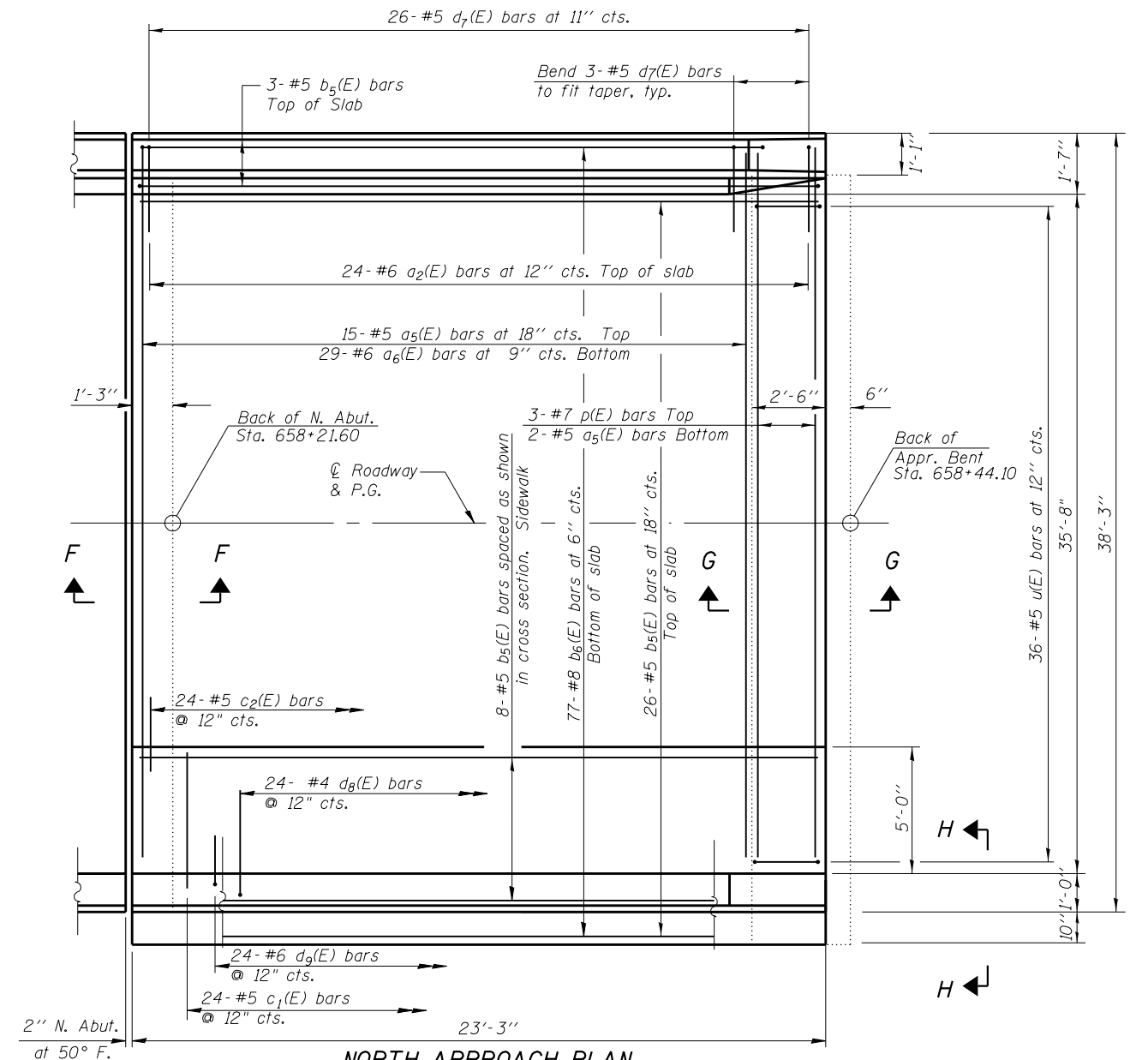
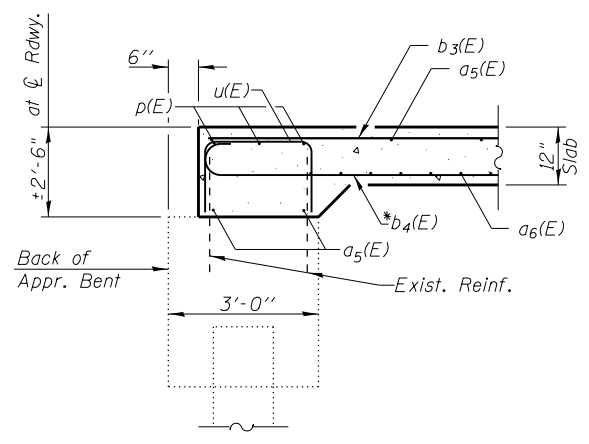


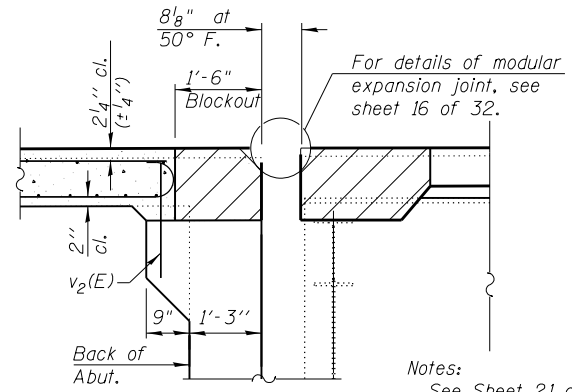
SOUTH APPROACH PLAN



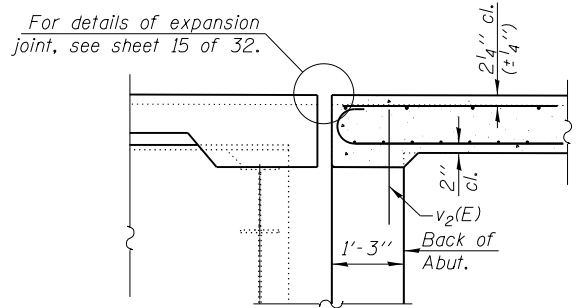
NORTH APPROACH PLAN



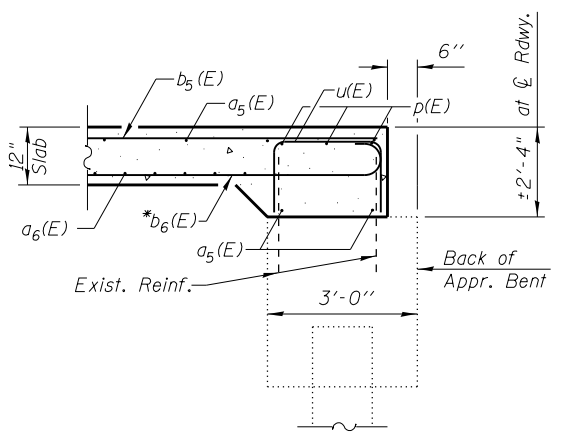
SECTION D-D



SECTION E-E



SECTION F-F



SECTION G-G

Notes:
 See Sheet 21 of 34 for Concrete Removal Details.
 Existing reinforcement extending into new construction shall be cleaned and incorporated into the new construction. Cost included with Concrete Removal.
 See Sheet 22 of 34 for additional blockout details.
 See Sheet 13 of 34 for View H-H.

*Tilt bars to maintain clearance

BLANK, WESSELINK, COOK & ASSOCIATES DECATUR, ILLINOIS ENGINEERS - CONSULTANTS DESIGN FIRM NO. 184000894

FILE NAME =	USER NAME =	DESIGNED <i>PBB</i>	REVISED -
		CHECKED <i>MCB</i>	REVISED -
		DRAWN <i>MLO</i>	REVISED -
		CHECKED <i>PBB/MCB</i>	REVISED -

**STATE OF ILLINOIS
 DEPARTMENT OF TRANSPORTATION**

**VAULTED APPROACH SLAB
 STRUCTURE NO. 058-0010**

SHEET NO. 12 OF 34 SHEETS

F.A.P. RTE.	SECTION	COUNTY	TOTAL SHEETS	SHEET NO.
710	(48X-B-2)BR & (48BR)BR	MACON	144	89
CONTRACT NO. 74438				

ILLINOIS FED. AID PROJECT