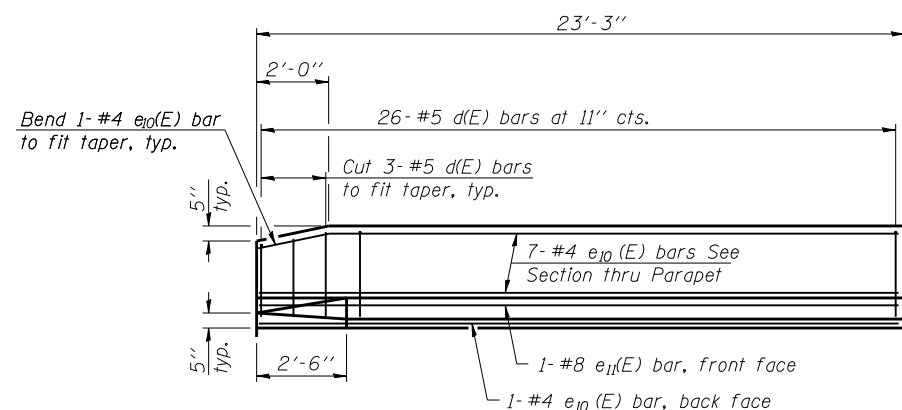
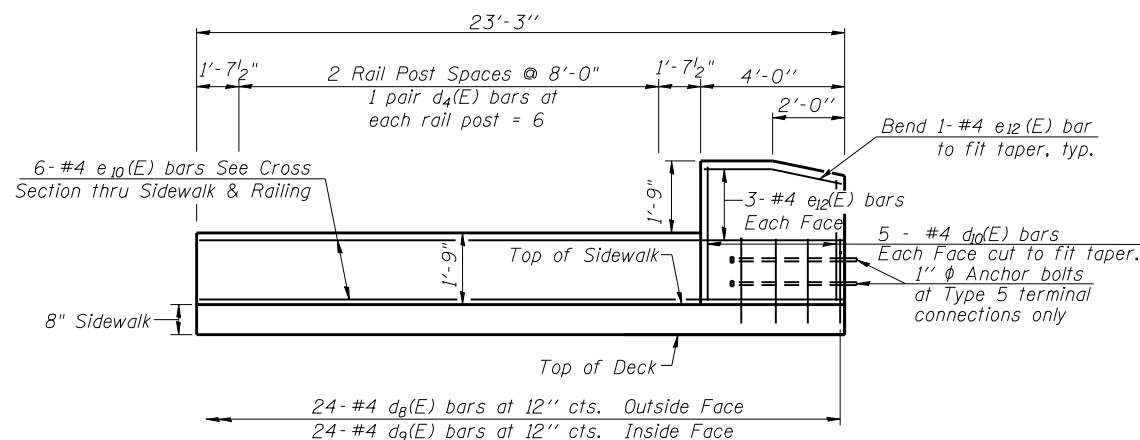


**TWO APPROACH SLABS  
BILL OF MATERIAL**

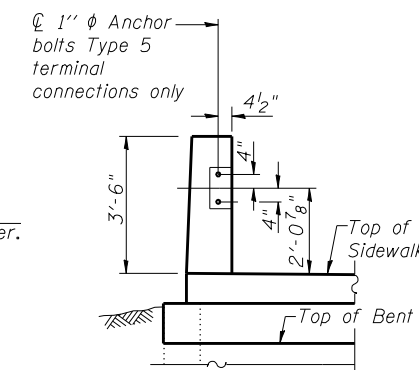
Bar	No.	Size	Length	Shape
a <sub>2</sub> (E)	48	#6	6'-6"	—
a <sub>5</sub> (E)	33	#5	37'-9"	—
a <sub>6</sub> (E)	56	#6	37'-9"	—
b <sub>3</sub> (E)	37	#5	21'-6"	—
b <sub>4</sub> (E)	77	#8	23'-4"	—
b <sub>5</sub> (E)	37	#5	23'-0"	—
b <sub>6</sub> (E)	77	#8	24'-10"	—
c <sub>1</sub> (E)	48	#5	5'-8"	—
c <sub>2</sub> (E)	48	#5	2'-8"	—
d(E)	52	#5	5'-7"	—
d <sub>4</sub> (E)	12	#4	2'-0"	—
d <sub>7</sub> (E)	52	#5	7'-1"	—
d <sub>8</sub> (E)	48	#4	4'-0"	—
d <sub>9</sub> (E)	48	#6	4'-2"	—
d <sub>10</sub> (E)	20	#4	4'-3"	—
e <sub>10</sub> (E)	28	#4	23'-0"	—
e <sub>11</sub> (E)	2	#8	23'-0"	—
e <sub>12</sub> (E)	12	#4	3'-9"	—
p(E)	6	#7	37'-9"	—
u(E)	72	#5	6'-3"	—
Reinforcement Bars, Epoxy Coated		Pound	19,690	
Concrete Superstructure		Cu. Yd.	101.9	



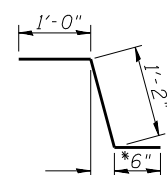
**INSIDE ELEVATION OF PARAPET**



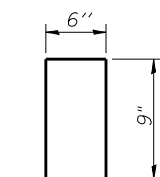
**INSIDE ELEVATION OF PARAPET SIDEWALK AND PARAPET**



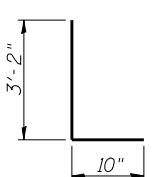
**VIEW H-H**



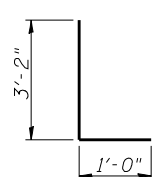
**BAR c<sub>2</sub>(E)**



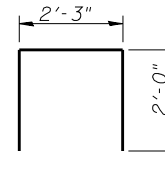
**BAR d<sub>4</sub>(E)**



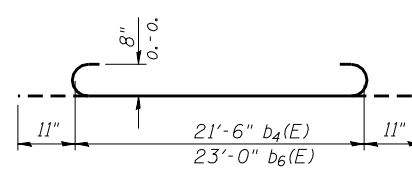
**BAR d<sub>8</sub>(E)**



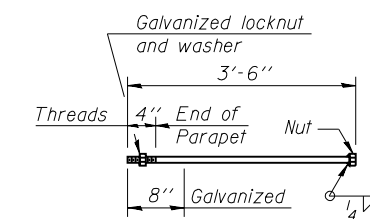
**BAR d<sub>9</sub>(E)**



**BAR u(E)**

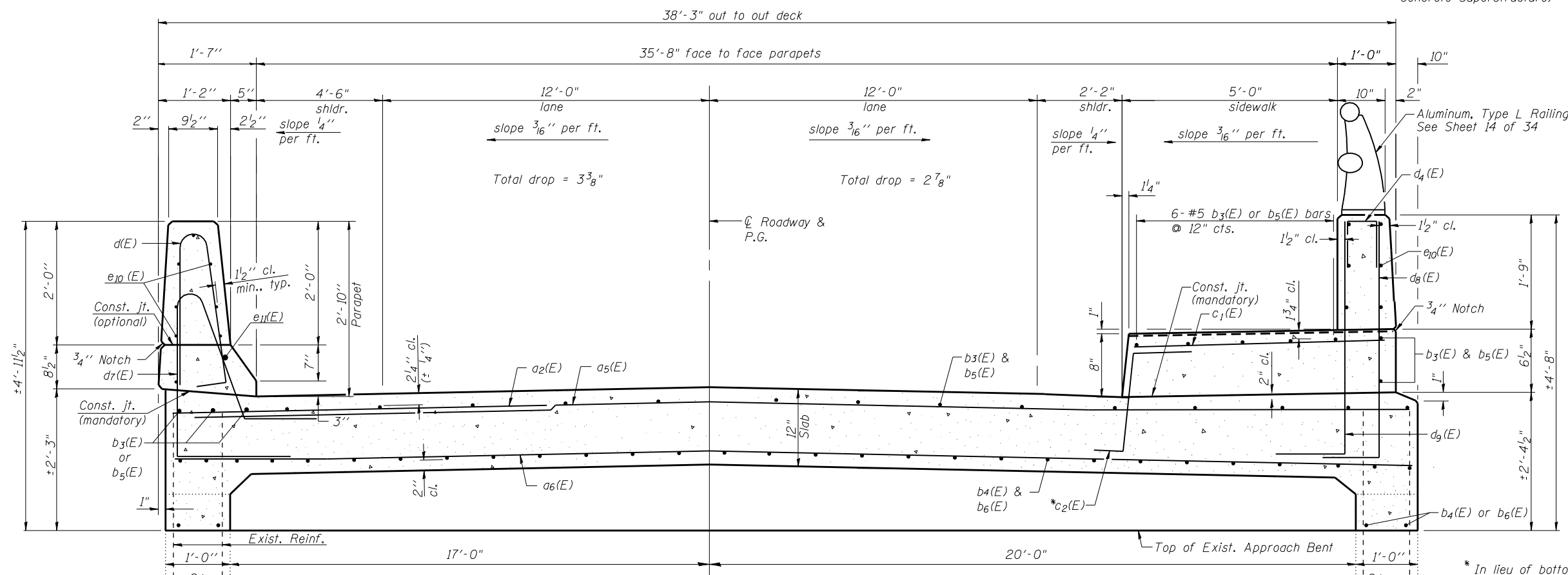


**BAR b<sub>4</sub>(E) or b<sub>6</sub>(E)**



**1" ANCHOR BOLT**

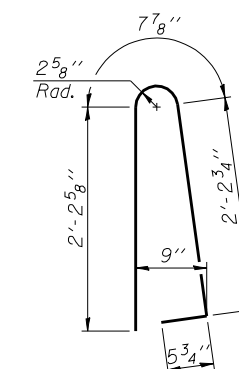
(Cost included with Concrete Superstructure)



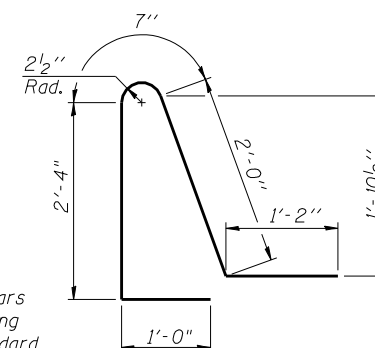
**NEAR APPR. BENT**

**CROSS SECTION**

**NEAR ABUTMENT**



**BAR d(E)**



**BAR d<sub>7</sub>(E)**

\* In lieu of bottom leg, c<sub>2</sub>(E) bars may be cored and set according to Article 509.06 of the Standard Specifications. Cored holes shall be roughened or scored per manufacturer's recommendations. Maximum depth of cored hole shall not exceed 6".

BLANK, WESSELINK, COOK & ASSOCIATES

DECATUR, ILLINOIS

ENGINEERS - CONSULTANTS

DESIGN FIRM NO. 184000894

FILE NAME =	USER NAME =	DESIGNED <b>PBB</b>	REVISED -
		CHECKED <b>MCB</b>	REVISED -
		DRAWN <b>MLO</b>	REVISED -
		CHECKED <b>PBB/MCB</b>	REVISED -

**STATE OF ILLINOIS  
DEPARTMENT OF TRANSPORTATION**

**VAULTED APPROACH SLAB DETAILS  
STRUCTURE NO. 058-0010**

SHEET NO. 13 OF 34 SHEETS

F.A.P. RTE.	SECTION	COUNTY	TOTAL SHEETS	SHEET NO.
710	(48X-B-2)BR & (48BR)BR	MACON	144	90
CONTRACT NO. 74438				

ILLINOIS FED. AID PROJECT