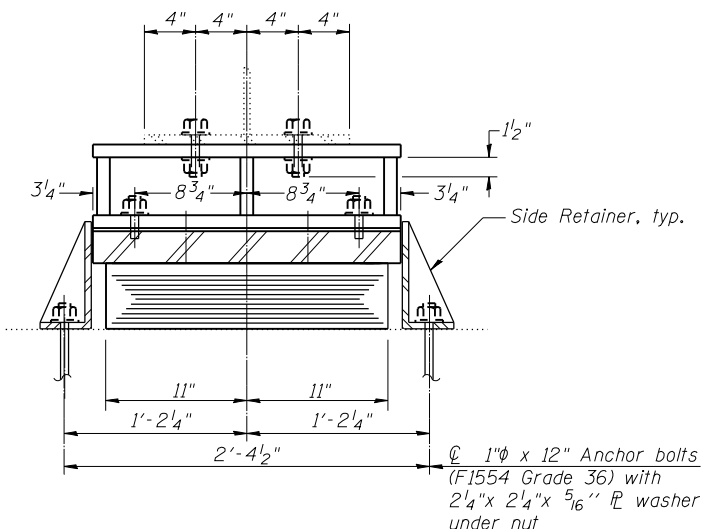
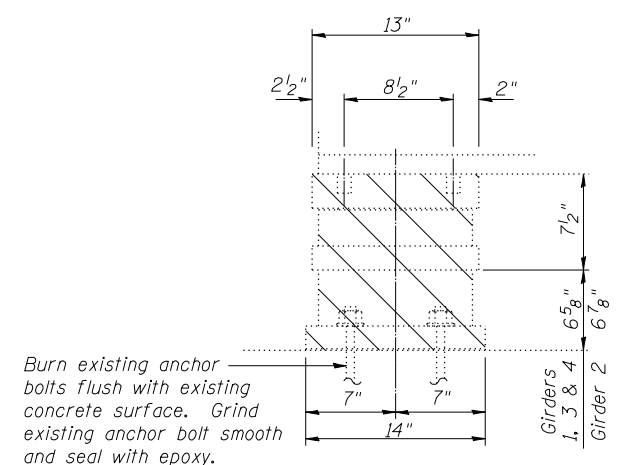


ELEVATION AT NORTH ABUT.

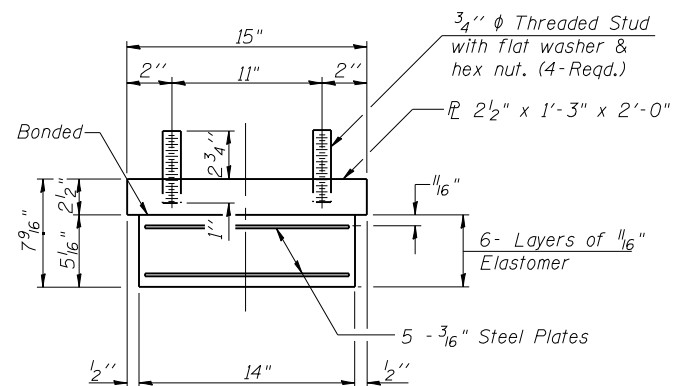


SECTION A-A



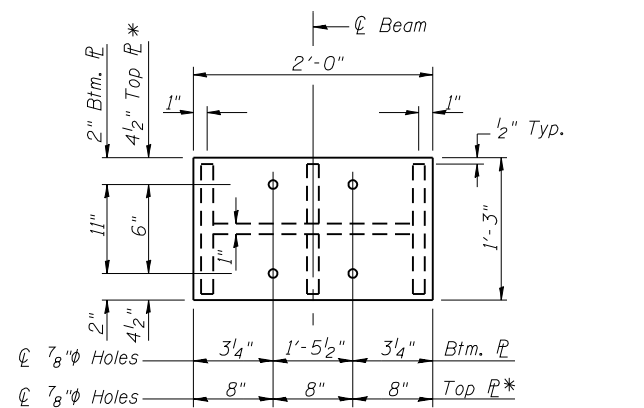
EXISTING BEARING REMOVAL DETAIL

TYPE I ELASTOMERIC EXP. BRG.



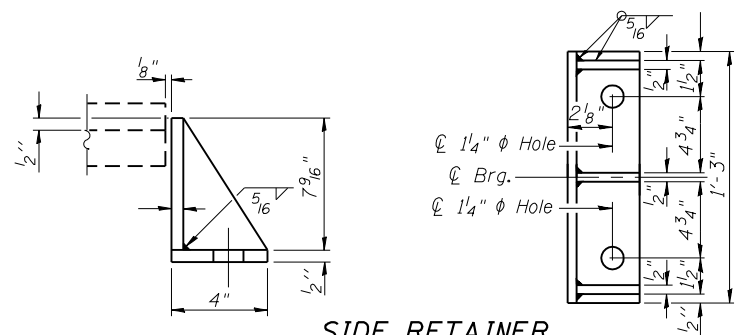
BEARING ASSEMBLY

Note:  
Shim plates shall not be placed under Bearing Assembly.



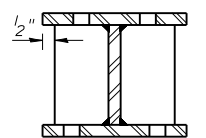
PLAN STEEL EXTENSION

\*Field Drill

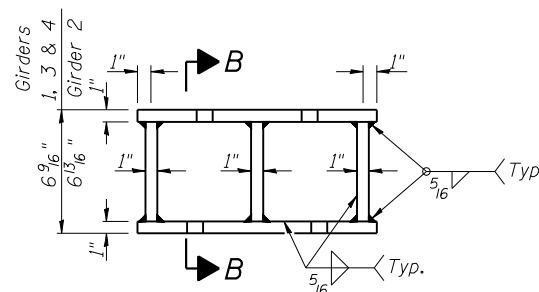


SIDE RETAINER

Equivalent rolled angle with stiffeners will be allowed in lieu of welded plates.



SECTION B-B



ELEVATION STEEL EXTENSION

PROCEDURE FOR JACKING AND REMOVING EXISTING BEARINGS (At Abutments)

- The Contractor shall submit, for approval by the Engineer, plans for jacking and removing the existing bearings at the abutments prior to commencing any work at the abutment bearings.
- In each stage, jacking and removal of existing bearings shall be done after the existing deck is removed and before new deck is poured.
- The new bearings and steel extensions shall be in place and the jacks lowered prior to pouring the new concrete deck in each stage. See Special Provision for Jack and Remove Existing Bearings.

Notes:

Anchor bolts shall be ASTM F1554 all-thread (or an Engineer-approved alternate material) of the grade(s) and diameter(s) specified. The corresponding specified grade of AASHTO M314 anchor bolts may be used in lieu of ASTM F1554.

Drilled and set anchor bolts shall be installed according to Article 521.06 of the Standard Specifications.

Side retainers and other steel members required for the elastomeric bearing assembly shall be included in the cost of Elastomeric Bearing Assembly, Type I. Steel extensions, shims and bolts shall be included in the cost of Furnishing & Erecting Structural Steel.

Two 1/8 in. adjusting shims shall be provided for each bearing in addition to all other plates or shims and placed as shown on bearing details.

See Sheets 19 and 20 of 34 for minimum jack capacity. Cost of field drilling included with Furnishing and Erecting Structural Steel.

Fill the unused existing lower flange bolt holes with silicone sealant suitable for structural steel. Cost included with Jack and Remove Existing Bearings.

Note:  
Prior to ordering any material, the Contractor shall verify in the field all bearing height and shim thickness dimensions.

BILL OF MATERIAL

Item	Unit	Total
Elastomeric Bearing Assembly Type I	Each	4
Anchor Bolts, 1"	Each	16
Furnishing & Erecting Structural Steel	Pound	1,377
Jack and Remove Existing Bearings	Each	4

Jacking Loads per Girder	ABUT.
R @ Steel Only	(K) 21
Min. Jack Capacity, Steel Only	(K) 42

BLANK, WESSELINK, COOK & ASSOCIATES DECATUR, ILLINOIS ENGINEERS - CONSULTANTS DESIGN FIRM NO. 184000894

FILE NAME =	USER NAME =	DESIGNED	REVISIONS
		PBB	-
		MCB	-
		MLO	-
		PBB/MCB	-

STATE OF ILLINOIS  
DEPARTMENT OF TRANSPORTATION

NORTH ABUTMENT BEARING DETAILS  
STRUCTURE NO. 058-0010

SHEET NO. 19 OF 34 SHEETS

F.A.P. RTE.	SECTION	COUNTY	TOTAL SHEETS	SHEET NO.
710	(48X-B-2)BR & (48BR)BR	MACON	144	96
CONTRACT NO. 74438				

ILLINOIS FED. AID PROJECT