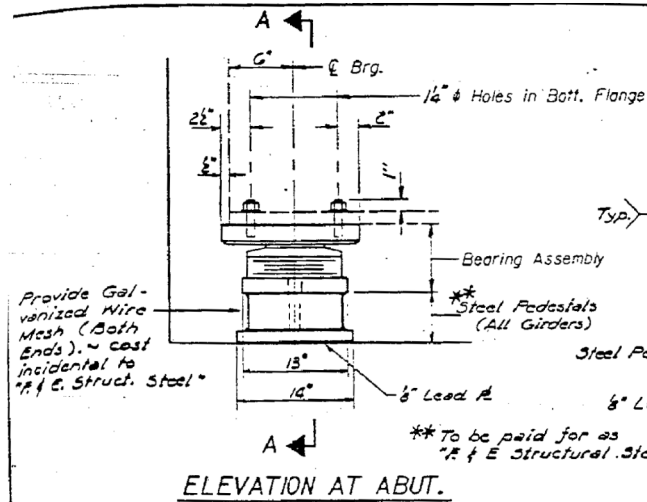
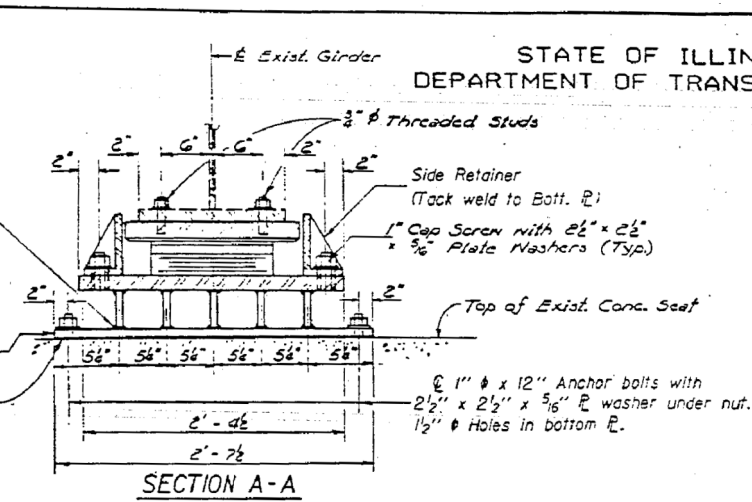


STATE OF ILLINOIS
DEPARTMENT OF TRANSPORTATION

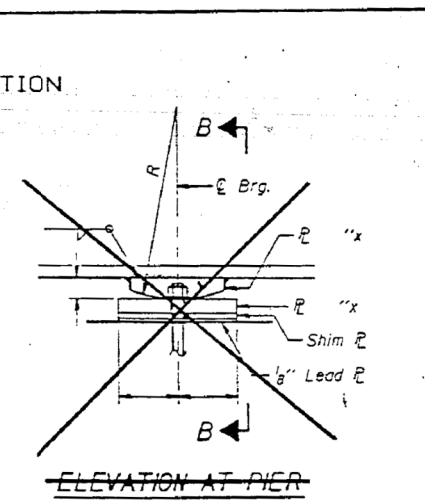
SHEET NO. 2
3 SHEETS



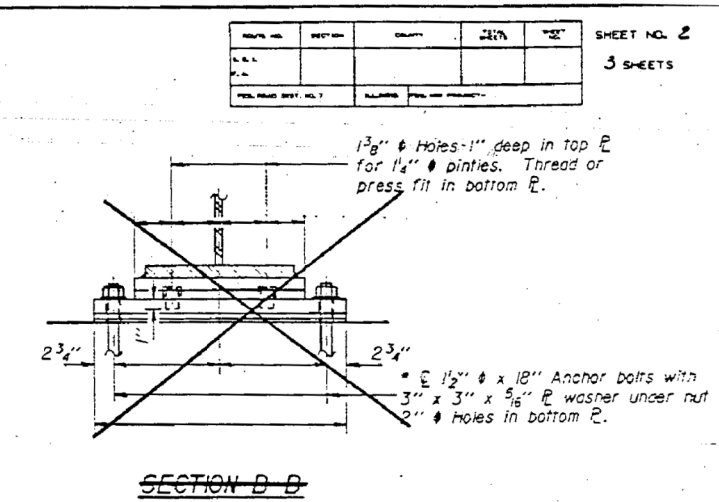
ELEVATION AT ABUT.



SECTION A-A

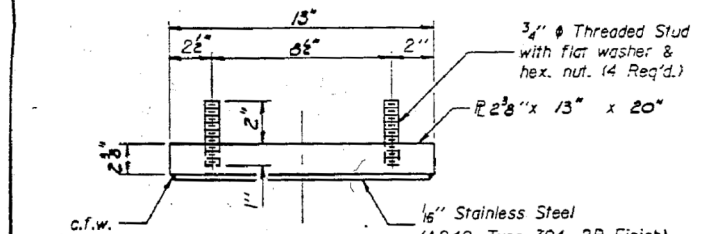


ELEVATION AT PIER

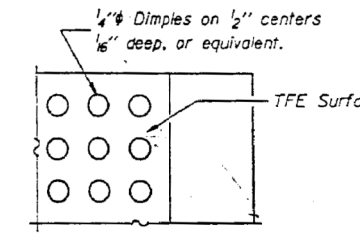


SECTION D-D

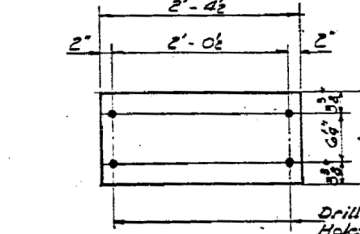
TYPE II TFE ELASTOMERIC EXP. BRG.



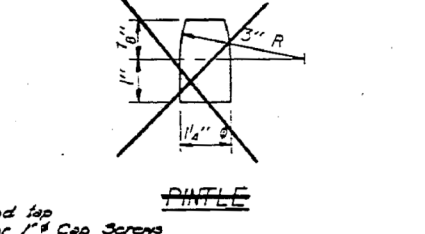
TOP BEARING ASSEMBLY



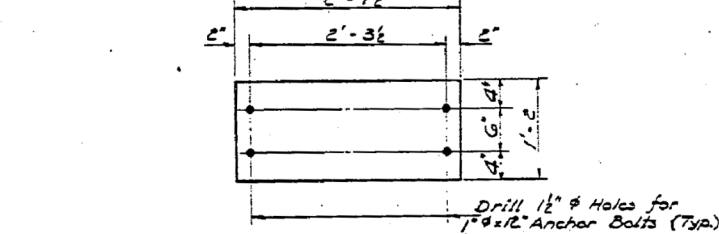
PLAN-TFE SURFACE



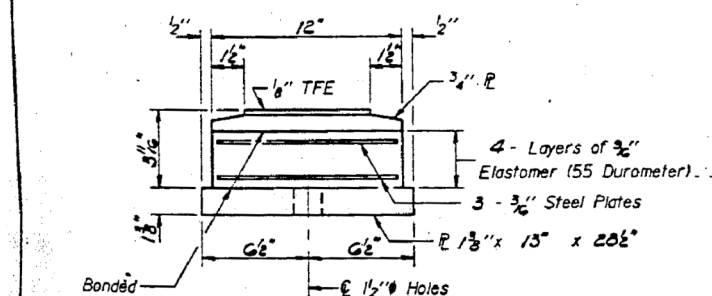
PEDESTAL TOP PLATE
(1 1/2" x 13" x 20 1/2")
No. Req'd: 4



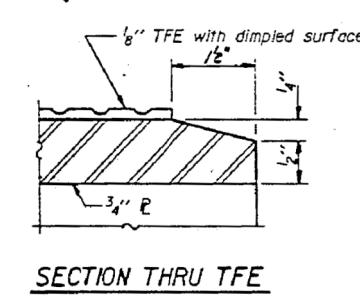
PEDESTAL WEB PLATE
1" x 5" x 12"
No. Req'd: 20



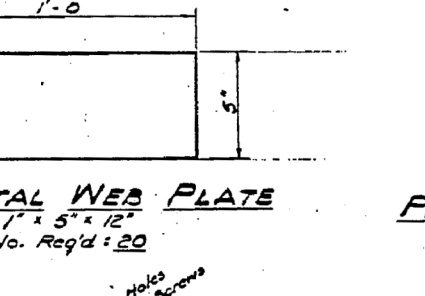
PEDESTAL BOTTOM PLATE
(1 1/2" x 14" x 3 1/2" - Bms 1, 3 & 4) - No. Req'd 3
(1 1/2" x 14" x 3 1/2" - Bm. 2) - No. Req'd 1



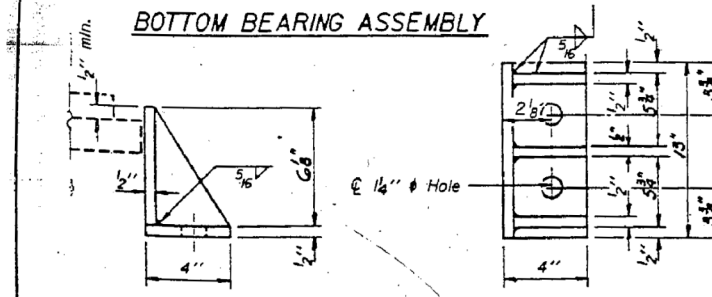
BOTTOM BEARING ASSEMBLY



SECTION THRU TFE



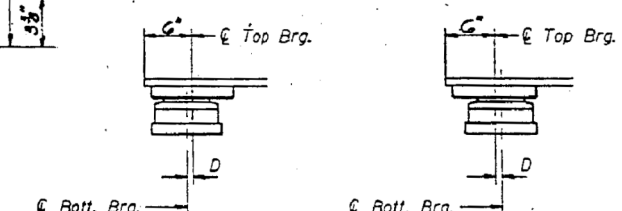
PEDESTAL CENTER PLATE
(1" x 4 1/2" x 5")
No. Req'd 16



SIDE RETAINER

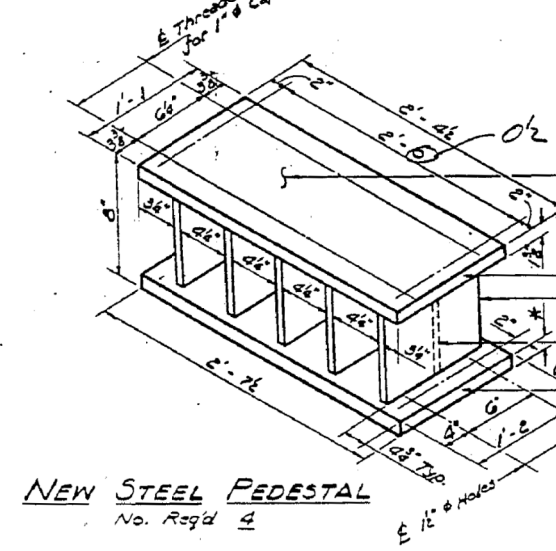
Note: The 1/8" TFE sheet shall be bonded directly to the top steel plate with a two-component, medium viscosity epoxy resin, conforming to the requirements of the Federal Specification MM-A-134, Type I. The bond agent shall be applied on the full area of the contact surfaces.

Bonding of 1/8" TFE sheet during vulcanizing process will be permitted provided the process and method of adjusting assembly height is approved by the Engineer.



SETTING ANCHOR BOLTS AT EXP. BRG.

1/8" per inch of expansion for every 15° temp. change from the normal temp. of 50°F.



NEW STEEL PEDESTAL
No. Req'd 4

BILL OF MATERIAL

Item	Unit	Total
Elastomeric Bearing Assembly Type II	Each	4

NORTH ABUTMENT
S.B.I. RT. 2 SEC. 48X-B2 & F2
MACON COUNTY
STA. 655 + 79.1

(053-0010)

BLANK, WESSELINK, COOK & ASSOCIATES DECATUR, ILLINOIS ENGINEERS - CONSULTANTS DESIGN FIRM NO. 184000894

FILE NAME	USER NAME	DESIGNED	CHECKED	DRAWN	CHECKED	REVISIONS	STATE OF ILLINOIS DEPARTMENT OF TRANSPORTATION	EXISTING BRIDGE PLANS	F.A.P. RTE.	SECTION	COUNTY	TOTAL SHEETS	SHEET NO.
		PBB	MCB	MLO	PBB/MCB				710	(48X-B-2)BR & (48BR)BR	MACON	144	107
									CONTRACT NO. 74438				
									ILLINOIS FED. AID PROJECT				