

ALUMINUM POLE CAP

CCTV CAMERA

4-1/2" DIAMETER SCHEDULE 80 ALUMINUM POLE, 20 FT. LENGTH (INSTALLED VERTICAL AND PLUMB)

ADJUSTABLE MAST ARM CLAMP
COMPONENT PRODUCTS, INC.
CPI-MAB-1070 (8"-10" DIAMETER)
CPI-MAB-1071 (12"-14" DIAMETER)
OR APPROVED EQUAL

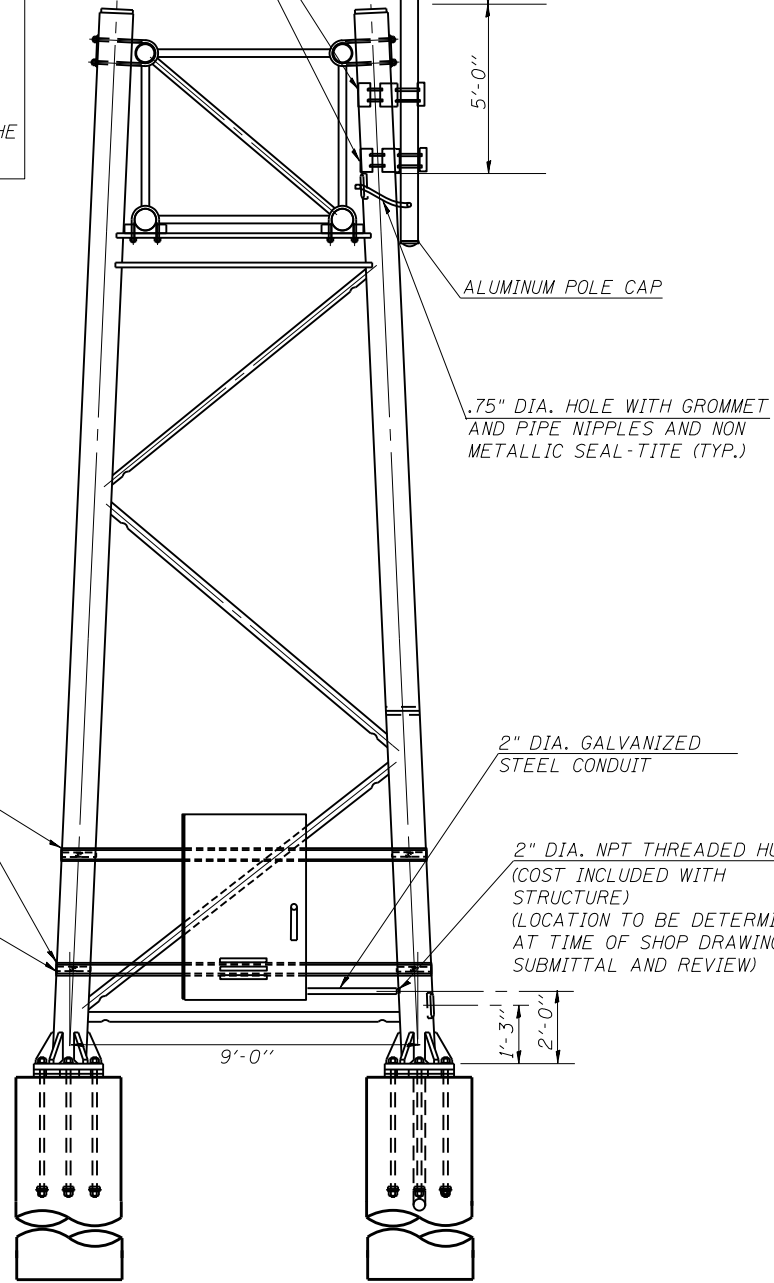
THE CONTRACTOR SHALL BE RESPONSIBLE FOR VERIFYING THAT THE CAMERA MAST COMPONENTS FIT CORRECTLY AND ARE COMPATIBLE WITH THE SIGN STRUCTURE. THE MANUFACTURER OF THE SIGN STRUCTURE SHALL APPROVE THE CAMERA MAST DESIGN. THE COST OF FURNISHING AND INSTALLING THE CAMERA MAST SHALL BE INCLUDED IN THE COST OF THE SIGN STRUCTURE.

THE CONTRACTOR SHALL FURNISH AND INSTALL ALL GALVANIZED STEEL UNISTRUT, BRACKETING AND HARDWARE REQUIRED FOR CABINET INSTALLATION ONTO THE SIGN STRUCTURE VERTICAL SUPPORTS. THE CONTRACTOR SHALL SUBMIT CATALOG CUT SHEETS FOR ALL MATERIALS AND DETAIL DRAWINGS FOR PROPOSED MOUNTING METHODS PRIOR TO COMMENCING WORK. ALL MATERIAL SHALL BE APPROVED BY THE ENGINEER PRIOR TO INSTALLATION. THE COST OF THIS WORK SHALL BE INCLUDED IN THE COST OF THE EQUIPMENT CABINET.

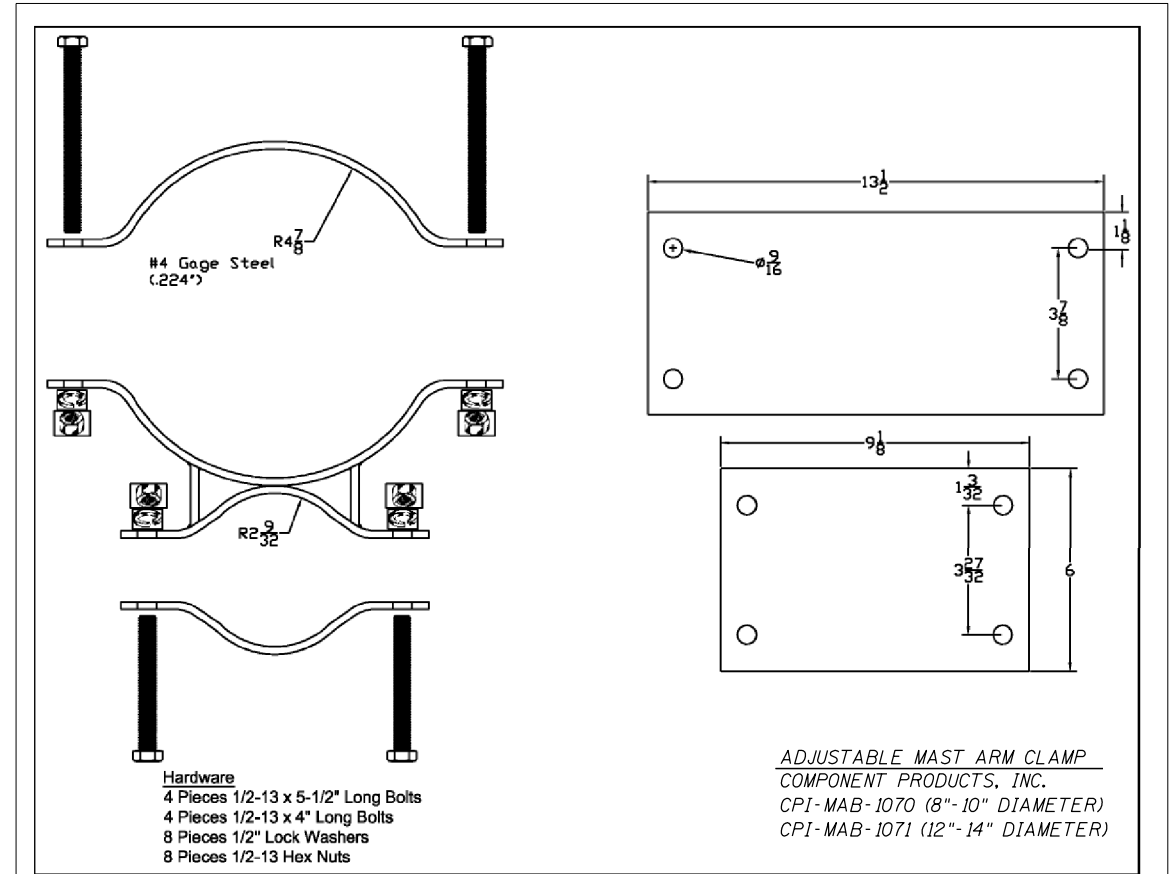
1-5#8" X 1-5/8" 12 GA. GALVANIZED STEEL UNISTRUT (ALL CUT ENDS TO BE COLD-GALVANIZED)

STAINLESS STEEL BANDING AND BUCKLE (TYPICAL)

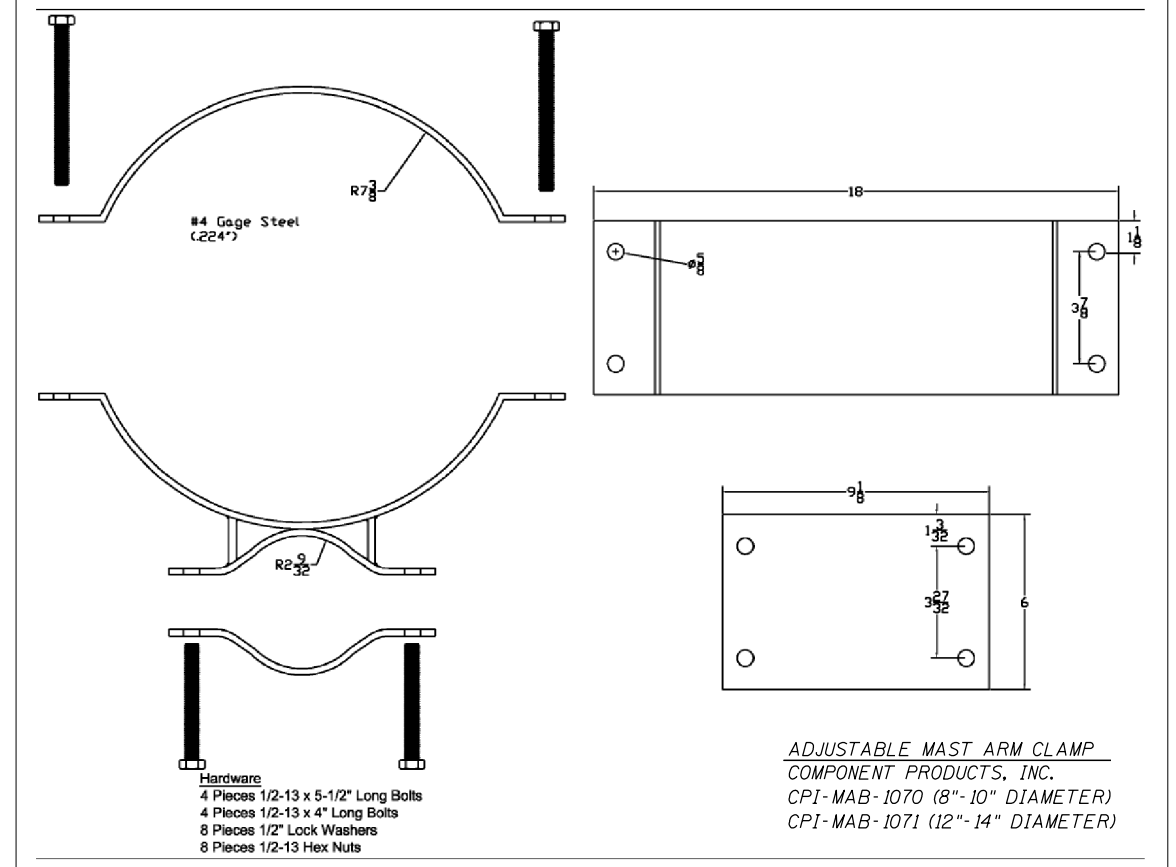
THE CONTRACTOR SHALL SUBMIT CABINET MOUNTING DETAILS TO THE DEPARTMENT FOR REVIEW PRIOR TO ORDERING MATERIALS.



SIDE ELEVATION



ADJUSTABLE MAST ARM CLAMP
COMPONENT PRODUCTS, INC.
CPI-MAB-1070 (8"-10" DIAMETER)
CPI-MAB-1071 (12"-14" DIAMETER)



ADJUSTABLE MAST ARM CLAMP
COMPONENT PRODUCTS, INC.
CPI-MAB-1070 (8"-10" DIAMETER)
CPI-MAB-1071 (12"-14" DIAMETER)

FILE NAME =	USER NAME = steffenmk	DESIGNED -	REVISED -
ci:\pw\work\p\dot\steffenmk\d0360593\074643-sht-dmsinstallationplan.dgn		DRAWN -	REVISED -
Default	PLOT SCALE = 5000.0000 / in.	CHECKED -	REVISED -
	PLOT DATE = 6/26/2014	DATE -	REVISED -

STATE OF ILLINOIS
DEPARTMENT OF TRANSPORTATION

PROPOSED DMS & CCTV CAMERA DETAIL
FOR OVERHEAD SIGN STRUCTURE

SCALE: SHEET OF SHEETS STA. TO STA.

F.A. RTE.	SECTION	COUNTY	TOTAL SHEETS	SHEET NO.
VAR.	D7 ITS 2014	*	72	19
* EFFINGHAM, CUMBERLAND CLARK & LAWRENCE ILLINOIS FED. AID PROJECT			CONTRACT NO. 74643	