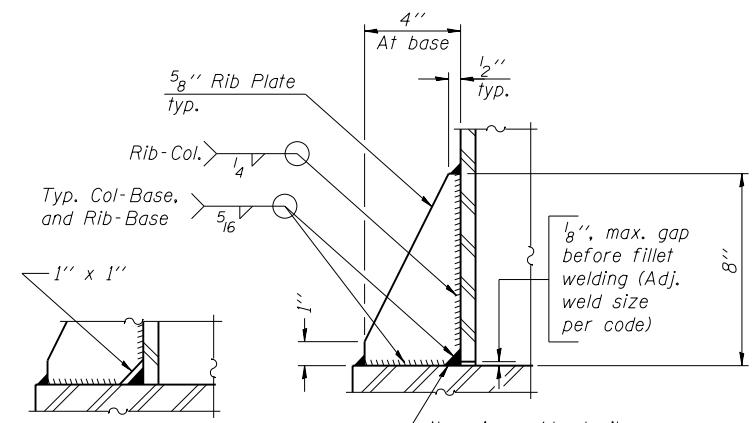
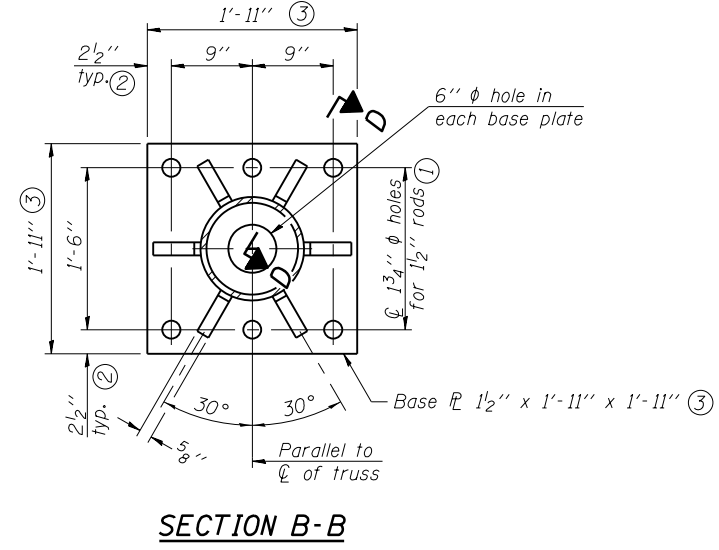
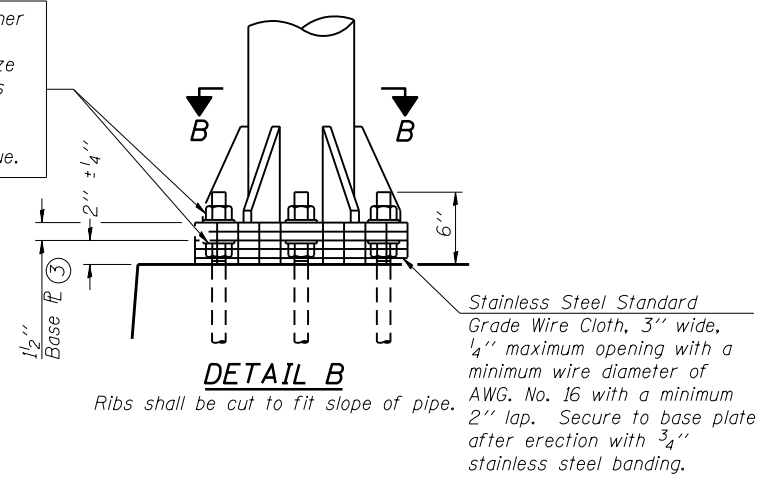
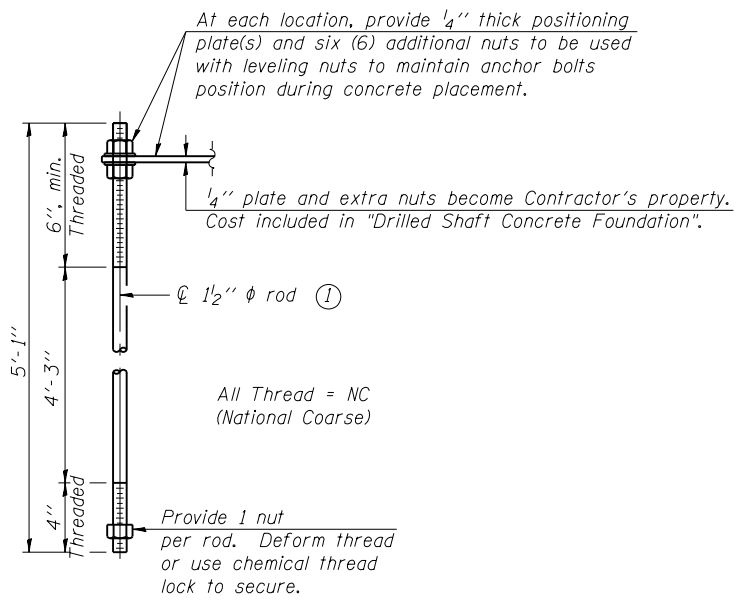
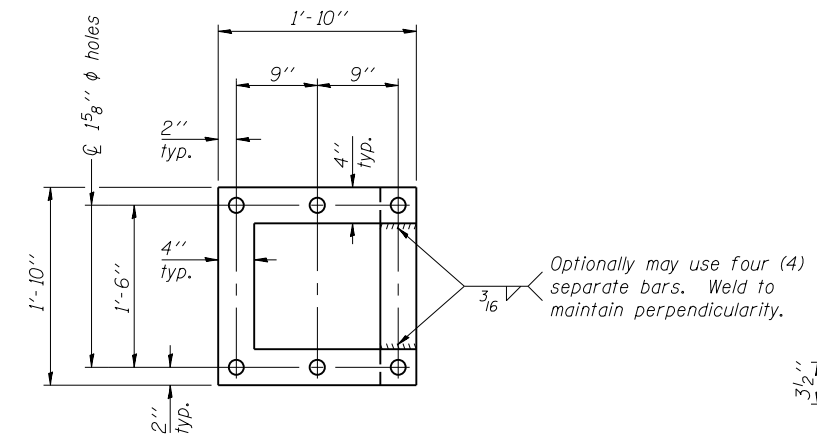


Hexagon locknut and washer (top), leveling nut and washer (bottom). Galvanize per AASHTO M232. Nuts shall each be tightened against base plate with 200 lb.-ft. minimum torque.



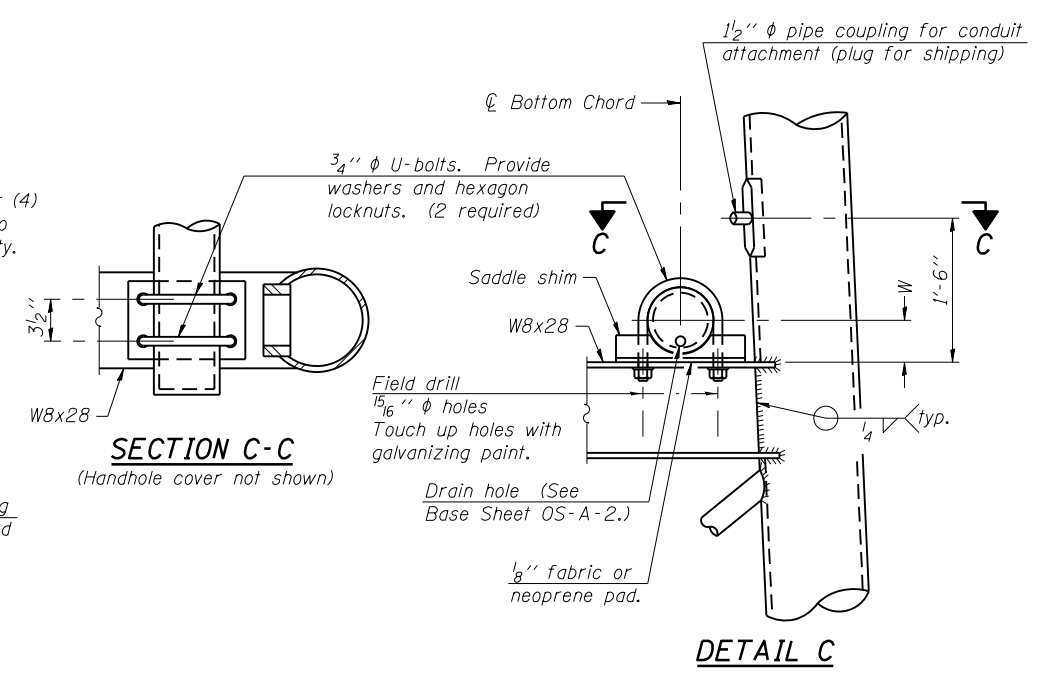
\*\* Alternate detail if welding col. to base plate first, then snip inside corner of ribs. Terminate weld on rib 1/4" from snip.



**TYPE III-A TRUSS**  
**12"  $\phi$  PIPE SUPPORT FRAME DETAILS**

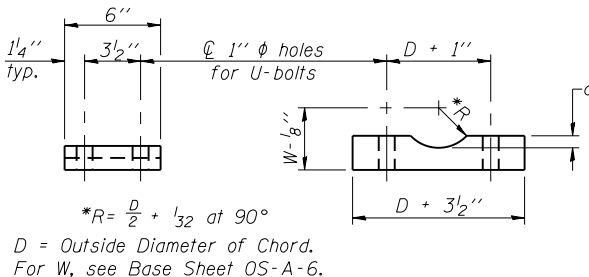
Notes:  
For Type III-A Truss spans greater than 150 ft. and up to 160 ft.:

- ① 1 3/4"  $\phi$  rod, 2"  $\phi$  holes
- ② 2 3/4" edge distance
- ③ Base Pl 1 5/8" x 1 11/2" x 1 11/2"



Truss Chord Nominal Dia.	a
7"	1"
8 1/2"	1 1/4"
9"	1 3/8"

**SADDLE SHIM DETAIL**  
ASTM B26 Alloy 356-F  
or  
ASTM B209 Alloy 6061-T651  
(4 required per sign truss)



OS4-A-8aA 6-1-12

FILE NAME =	USER NAME = steffenmk	DESIGNED -	REVISED -
c:\pwwork\pwwork\steffenmk\d0360593\074643-sht-detail.dgn		DRAWN -	REVISED -
Default	PLOT SCALE = 100.0000' / in.	CHECKED -	REVISED -
	PLOT DATE = 5/22/2014	DATE -	REVISED -

STATE OF ILLINOIS  
DEPARTMENT OF TRANSPORTATION

OVERHEAD SIGN STRUCTURES  
SUPPORT FRAME FOR TYPE III-A ALUMINUM TRUSS

SCALE: SHEET OF SHEETS STA. TO STA.

F.A. RTE.	SECTION	COUNTY	TOTAL SHEETS	SHEET NO.
VAR	D7 ITS 2014	*	72	44
* EFFINGHAM, CUMBERLAND			CONTRACT NO. 74643	
CLARK & LAWRENCE ILLINOIS FED. AID PROJECT				