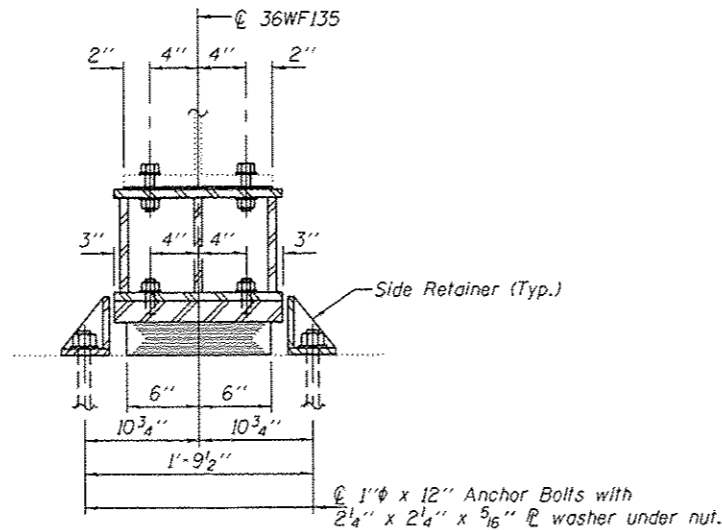
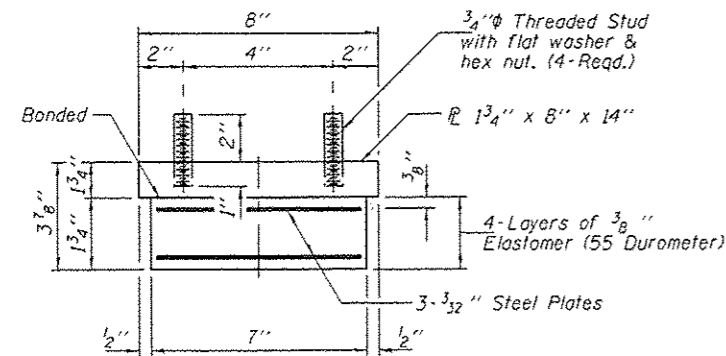


ELEVATION AT WEST ABUTMENT

TYPE I ELASTOMERIC EXP. BRG.



SECTION A-A



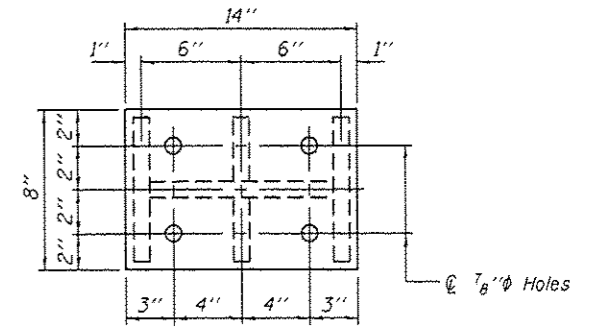
BEARING ASSEMBLY

Note:  
Shim plates shall not be placed under Bearing Assembly.

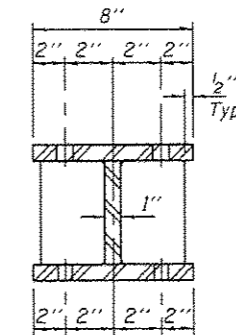
BEAM REACTIONS

R <sub>P</sub>	(K)	22.5
R <sub>L</sub>	(K)	33.3
Imp.	(K)	9.0
R (Total)	(K)	64.8

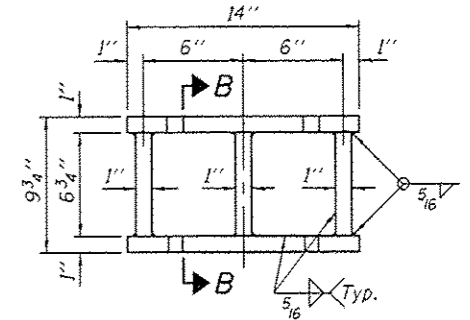
Notes:  
Diaphragm removal and reinstallation may be required to facilitate drilling holes. Cost included with Furnishing and Erecting Structural Steel.  
New steel extensions, shim plates and connection bolts are included with Furnishing and Erecting Structural Steel.  
Prior to ordering any material, the Contractor shall verify in the field all bearing height and shim thickness dimensions.  
Min. jack capacity = 40 Tons.  
Anchor bolts shall be ASTM F1554 all-thread (or an Engineer-approved alternate material) of the grade(s) and diameter(s) specified. ASTM A307 Grade C anchor bolts may be used in lieu of ASTM F1554 Grade 36 (Fy=36ksi). The corresponding specified grade of AASHTO M314 anchor bolts may be used in lieu of ASTM F1554.  
Drilled and set anchor bolts shall be installed according to Article 521.06 of the Standard Specifications.  
Side retainers shall be included in the cost of Elastomeric Bearing Assembly, Type I.



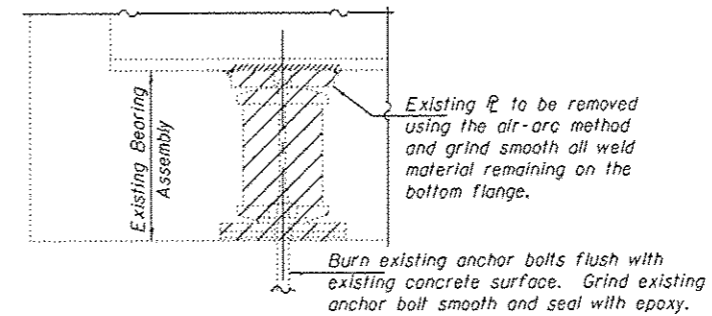
PLAN TOP AND BOTTOM PLATE



SECTION B-B



STEEL EXTENSION DETAIL

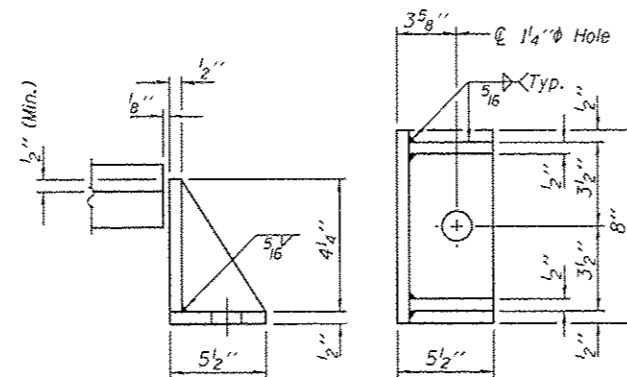


EXISTING BEARING REMOVAL DETAIL

Cost included with Jack and Remove Existing Bearings.

BILL OF MATERIAL

Item	Unit	Total
Elastomeric Bearing Assembly, Type I	Each	12
Jack and Remove Existing Bearings	Each	12
Furnishing and Erecting Structural Steel	Pound	1650
Anchor Bolts 1"φ	Each	24



SIDE RETAINER

Equivalent rolled angle with stiffeners will be allowed in lieu of welded plates.

TYI/REPS 12-03-2006

DESIGNED - GGE	EXAMINED
CHECKED - TLC	ACTING ENGINEER OF STRUCTURAL SERVICES
DRAWN - Kyla M. Stoffen	PASSED
CHECKED - GGE	ACTING ENGINEER OF BRIDGES AND STRUCTURES

DATE - AUGUST 18, 2014
------------------------

STATE OF ILLINOIS  
DEPARTMENT OF TRANSPORTATION

ELASTOMERIC BEARING, TYPE I DETAILS FOR WEST ABUTMENTS  
SN 060-0025 (EB) & 0026 (WB)

SHEET NO. 5 OF 7 SHEETS

F.A.J. RTE.	SECTION	COUNTY	TOTAL SHEETS	SHEET NO.
70	60-111.121R5-3	MADISON	242	182
CONTRACT NO. 76F13			ILLINOIS FED. AID PROJECT	