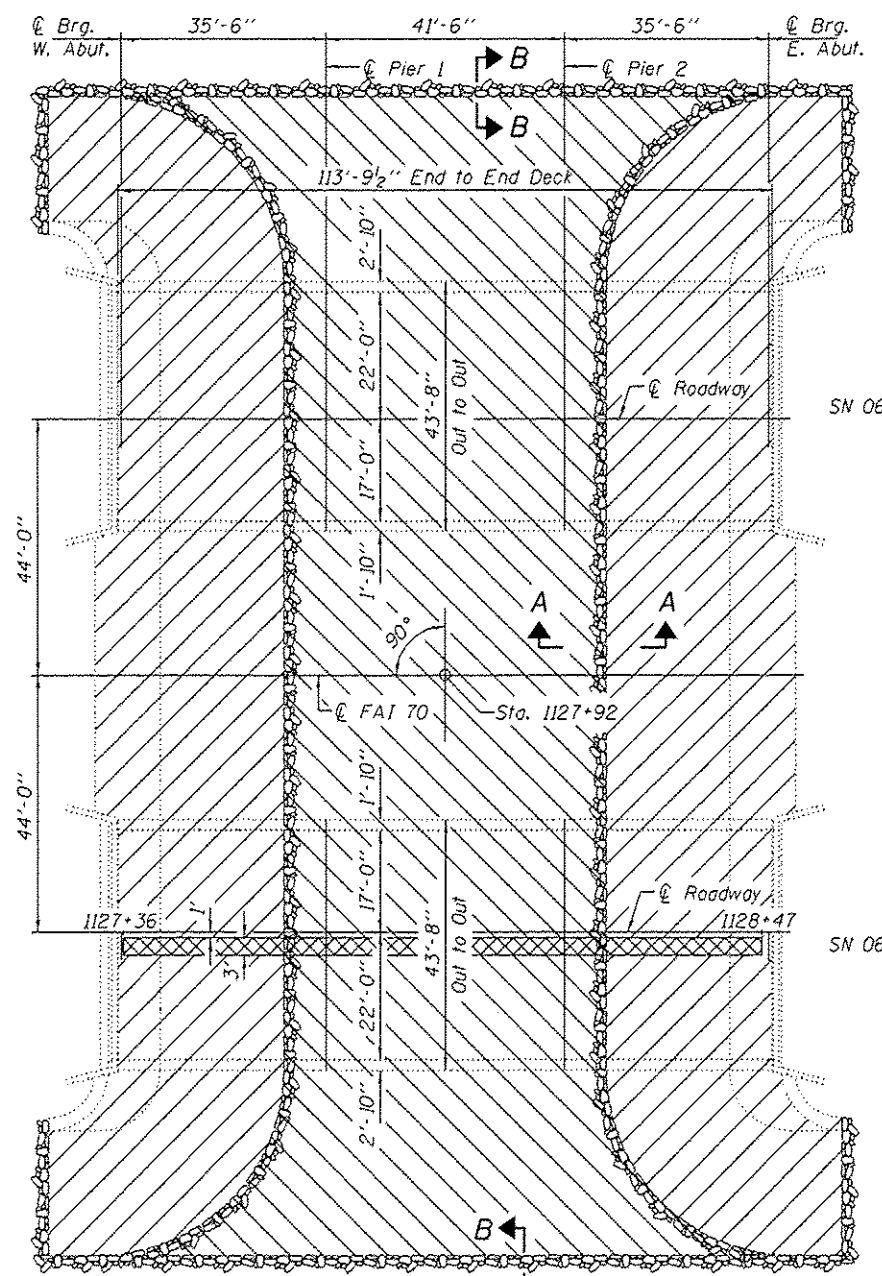


**ELEVATION**



**PLAN**

Cross hatched areas indicate Deck Slab Repair (Partial)

**GENERAL NOTES**

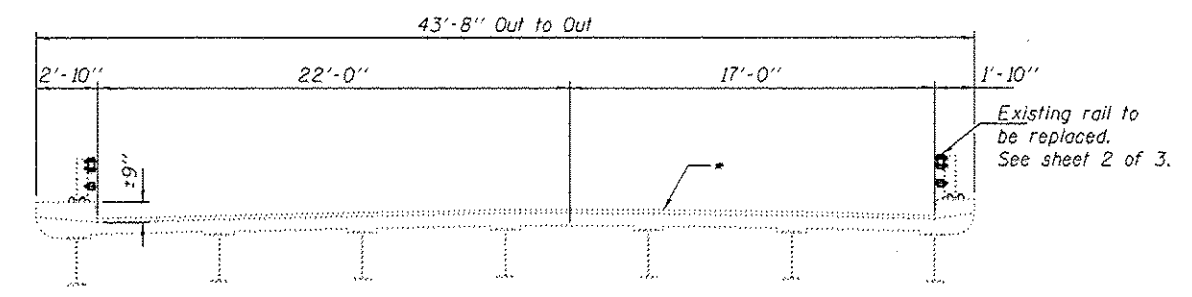
All structural steel shall conform to AASHTO Classification M-270 Gr. 36, unless otherwise noted.

Plan dimensions and details relative to existing plans are subject to nominal construction variations. The Contractor shall field verify existing dimensions and details affecting new construction and make necessary approved adjustments prior to construction or ordering of materials. Such variations shall not be cause for additional compensation for a change in scope of the work, however, the Contractor will be paid for the quantity actually furnished at the unit price bid for the work.

The existing structural steel coating contains lead. The Contractor shall take appropriate precautions to deal with the presence of lead on this project.

Cleaning and painting of the existing structural steel shall be as specified in the special provision for "Cleaning and Painting Existing Steel Structures". All beams, bearings and other structural steel within 5 ft. (measured along beam) of either side of deck joints shall be cleaned per Near White Blast Cleaning - SSPC-SP10. The exterior surfaces and bottom of the bottom flange of the fascia beams shall be cleaned per Commercial Grade Power Tool Cleaning - SSPC-SP15. The designated areas cleaned per Near White Blast Cleaning and per Commercial Grade Power Tool Cleaning shall be painted according to the requirements of Paint System 1 - OZ/E/U. The color of the final finish coat for all interior and exterior steel surfaces shall be Interstate Green, Munsell No. 7.5G 4/8.

Areas of deck repairs shown are estimated. The Engineer shall show actual locations of deck repairs on As-built Plans.

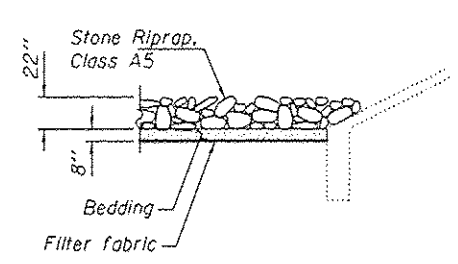


**CROSS SECTION**

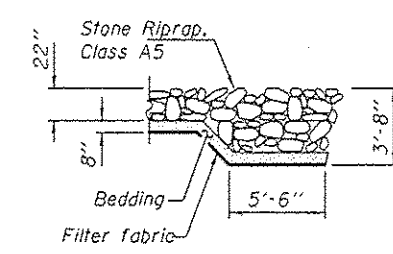
060-0027, Looking West  
060-0028, Looking East

\* Apply Bridge Deck Concrete Sealer to the deck surface and the face & top of the curbs

- Stone Riprap, Filter Fabric & Bedding
- Slope Wall Breaking and Riprap



**SECTION A-A**



**SECTION B-B**

**TOTAL BILL OF MATERIAL**

ITEM	UNIT	QUANTITY
Bridge Deck Concrete Sealer	Sq. Ft.	10280
Deck Slab Repair (Partial)	Sq. Yd.	37.0
Cleaning and Painting Steel Bridge No. 3	L.S.	1
Cleaning and Painting Steel Bridge No. 4	L.S.	1
Containment and Disposal of Lead Paint Cleaning Residuals, Bridge No. 3	L.S.	1
Containment and Disposal of Lead Paint Cleaning Residuals, Bridge No. 4	L.S.	1
Stone Riprap, Class A5	Sq. Yd.	3052
Filter Fabric	Sq. Yd.	1232
Slope Wall Breaking	Sq. Yd.	1820
Bridge Rail Removal	Foot	462
Steel Railing, Type 2399.	Foot	462



DESIGNED	EXAMINED	DATE
CHECKED	PASSED	AUGUST 18, 2014
DRAWN	REVISIONS	
CHECKED	REVISIONS	

STATE OF ILLINOIS  
DEPARTMENT OF TRANSPORTATION

PLAN AND ELEVATION  
FAI 70 OVER MINIER SLOUGH  
SN 060-0027(EB) & 0028(WB)

F.A.I. RTE.	SECTION	COUNTY	TOTAL SHEETS	SHEET NO.
10	60-111,127R5-3	MADISON	242	185
CONTRACT NO. 76F13			ILLINOIS FED. AID PROJECT	

SHEET NO. 1 OF 3 SHEETS