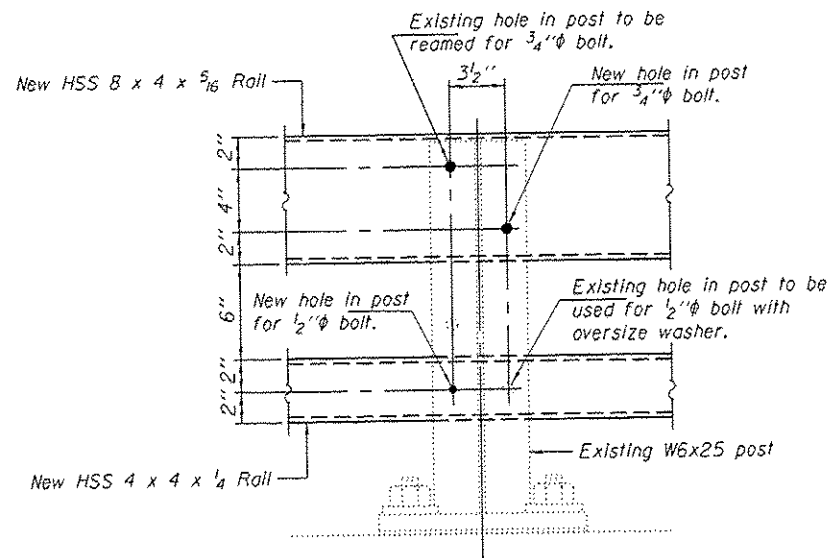


RAIL MODIFICATION DETAIL

Notes:
 Existing top and bottom rail elements to be removed.
 One new rail post to be installed at each corner of the bridge.
 New top and bottom rail elements to be attached.



**EXISTING RAIL POST
 MODIFICATION DETAIL**

BILL OF MATERIAL

Item	Unit	Quantity
Bridge Rail Removal	Foot	462

DESIGNED GGE	EXAMINED <i>Timothy A. Andert</i>	DATE AUGUST 18, 2014
CHECKED SMR	ACTING ENGINEER OF STRUCTURAL SERVICES	
DRAWN baliva	PASSED <i>Carl Perry</i>	REVISED
CHECKED GGE SMR	ACTING ENGINEER OF BRIDGES AND STRUCTURES	REVISED

STATE OF ILLINOIS
 DEPARTMENT OF TRANSPORTATION

RAIL MODIFICATION DETAILS
 SN 060-0027 (EB) & 0028 (WB)

SHEET NO. 2 OF 3 SHEETS

F.A.I. RTE.	SECTION	COUNTY	TOTAL SHEETS	SHEET NO.
TO	60-111.121RS-3	MADISON	242	186
CONTRACT NO. 76F13			ILLINOIS FED. AID PROJECT	