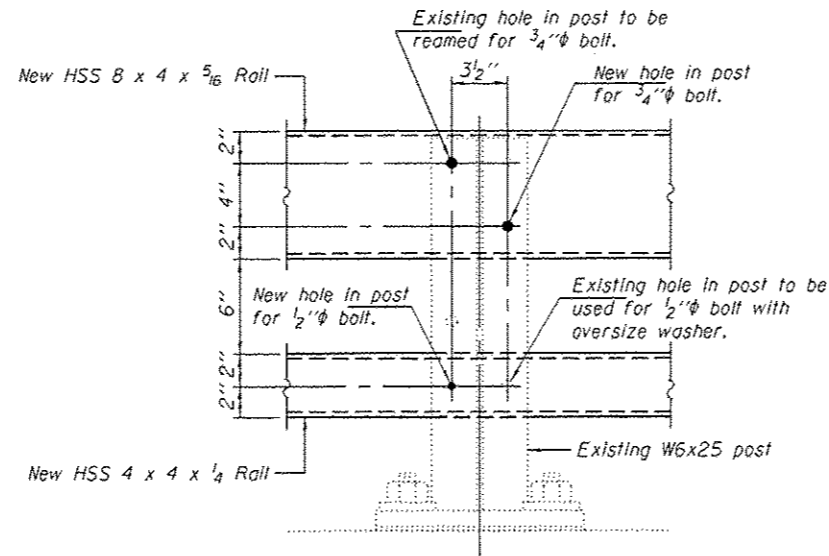


**RAIL MODIFICATION DETAIL**

Notes:  
 Existing top and bottom rail elements to be removed.  
 One new rail post to be installed at each corner of the bridge.  
 New top and bottom rail elements to be attached.



**EXISTING RAIL POST MODIFICATION DETAIL**

**BILL OF MATERIAL**

Item	Unit	Quantity
Bridge Rail Removal	Foot	375

DESIGNED - GCE	EXAMINED - <i>Timothy A. Anhalt</i>	DATE - AUGUST 18, 2014
CHECKED - SMR	ACTING ENGINEER OF STRUCTURAL SERVICES	
DRAWN - Kyle M. Steffen	PASSED - <i>Carl Perry</i>	
CHECKED - GCE SMR	ACTING ENGINEER OF BRIDGES AND STRUCTURES	

STATE OF ILLINOIS  
 DEPARTMENT OF TRANSPORTATION

RAIL MODIFICATION DETAILS  
 SN 060-0029 (EB) & 0030 (WB)

F.A.I. RTE. 70	SECTION 60-111.12/RS-3	COUNTY MADISON	TOTAL SHEETS 242	SHEET NO. 193
CONTRACT NO. 76F13			ILLINOIS FED. AID PROJECT	

SHEET NO. 6 OF 8 SHEETS