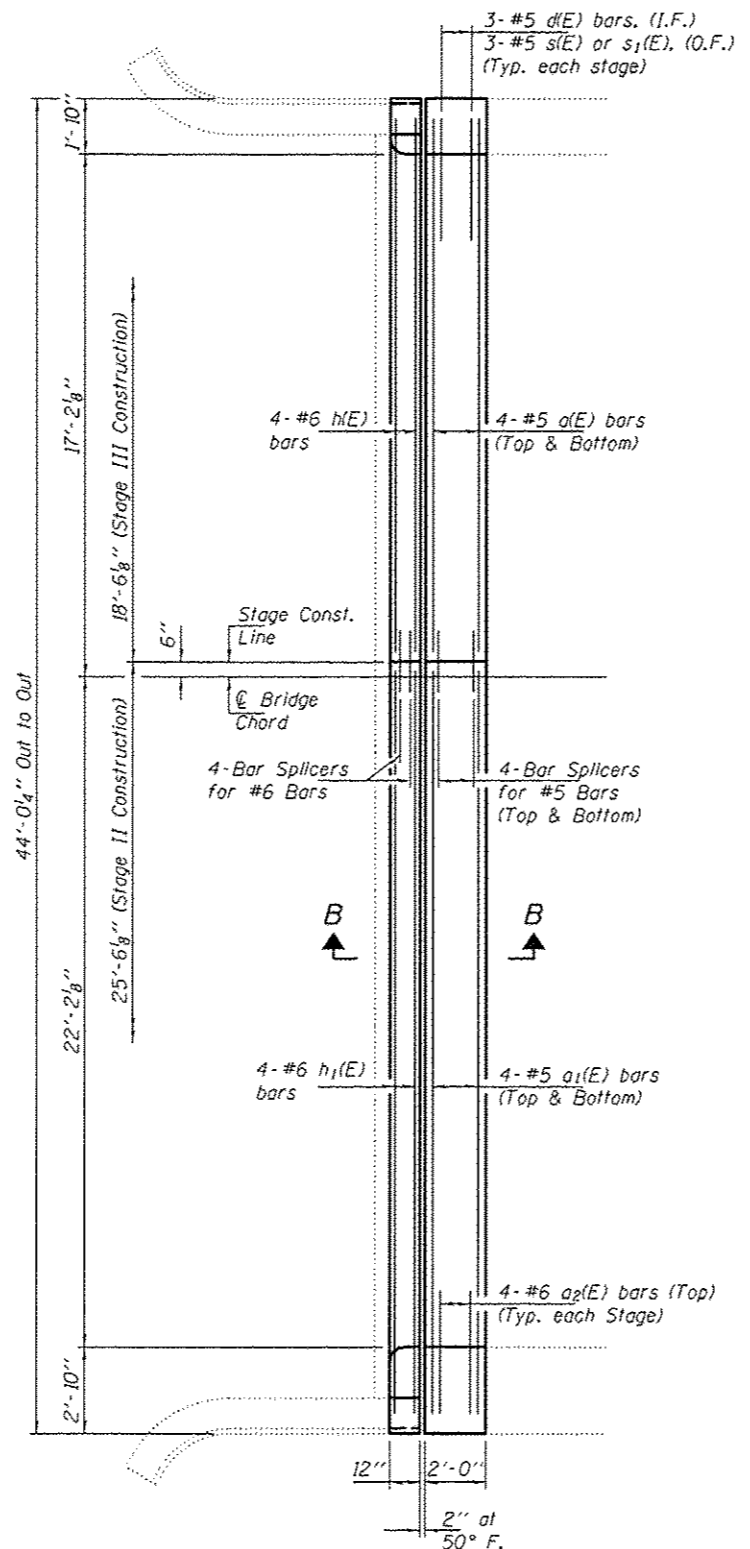
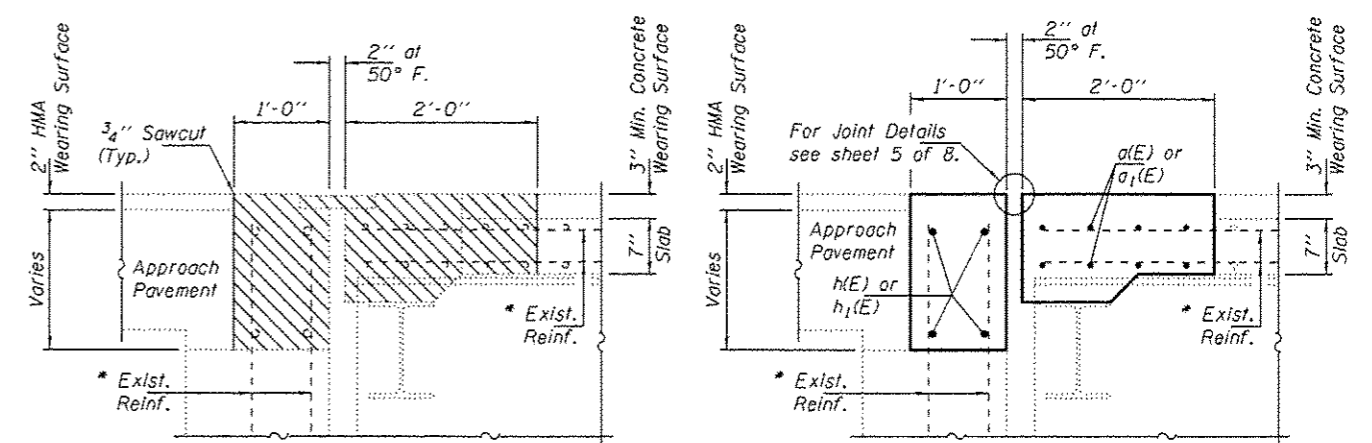


REMOVAL PLAN
West Abutment shown,
East Abutment similar.

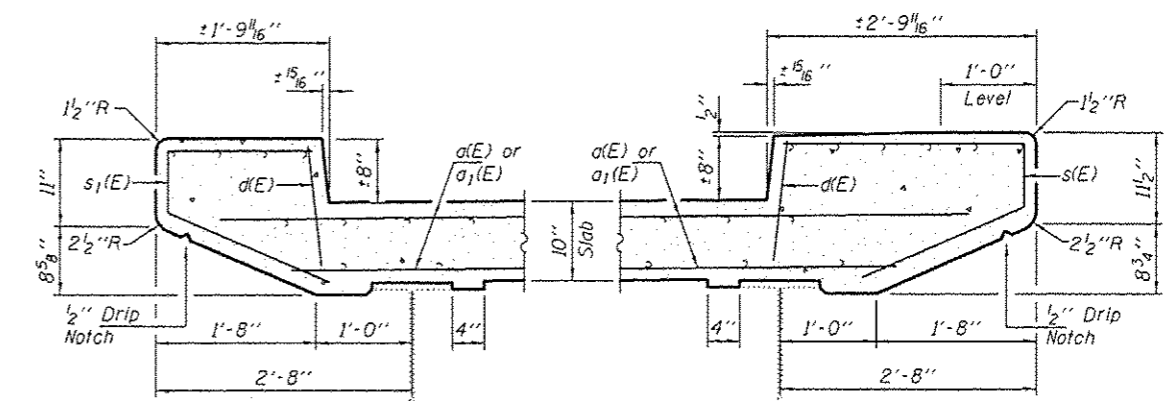


REPLACEMENT PLAN
West Abutment shown,
East Abutment similar.



SECTION A-A

SECTION B-B



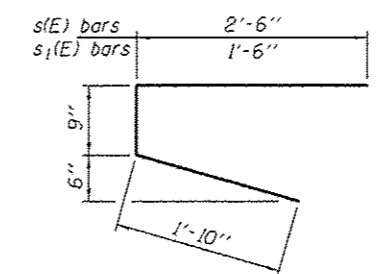
NORTH CURB DETAILS

SOUTH CURB DETAILS

* Existing reinforcement extending into the removal area shall be cleaned, straightened and incorporated into the new construction. Any reinforcement bars that are damaged during concrete removal shall be replaced with an approved bar splicer or anchorage system. Cost shall be included with Concrete Removal.

BILL OF MATERIAL

Bar	No.	Size	Length	Shape
a(E)	16	#5	18'-0"	—
a1(E)	16	#5	25'-0"	—
a2(E)	16	#6	4'-0"	—
d(E)	12	#4	1'-3"	—
h(E)	8	#6	18'-0"	—
h1(E)	8	#6	25'-0"	—
s(E)	6	#4	5'-1"	┌
s1(E)	6	#4	4'-1"	┌
Concrete Removal			Cu. Yd.	12.4
Concrete Superstructure			Cu. Yd.	12.4
Bar Splicers			Each	24
Reinforcement Bars, Epoxy Coated			Pound	1380



BARS s(E) & s1(E)

DESIGNED - SMR	EXAMINED - <i>Timothy A. ...</i>	DATE - AUGUST 18, 2014
CHECKED - TLC	ACTING ENGINEER OF STRUCTURAL SERVICES	
DRAWN - Kyla M. Stoffen	PASSED - <i>Carl ...</i>	
CHECKED - SMR TLC	ACTING ENGINEER OF BRIDGES AND STRUCTURES	

**STATE OF ILLINOIS
DEPARTMENT OF TRANSPORTATION**

**EXPANSION JOINT REMOVAL & REPLACEMENT DETAILS
SN 060-0031 (E.B.)**

SHEET NO. 2 OF 8 SHEETS

F.A.I. RTE.	SECTION	COUNTY	TOTAL SHEETS	SHEET NO.
70	60-111.12RS-3	MADISON	242	197
CONTRACT NO. 76F13			ILLINOIS FED. AID PROJECT	