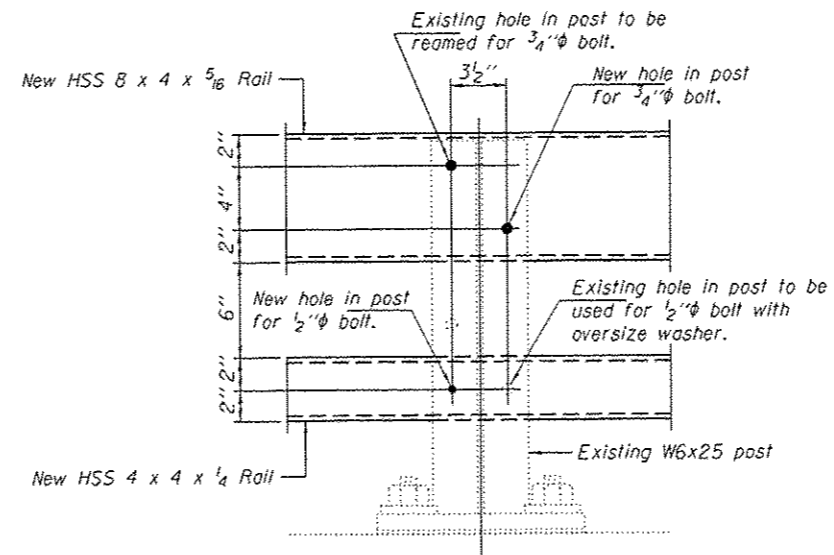


RAIL MODIFICATION DETAIL

Notes:
Existing top and bottom rail elements to be removed.
One new rail post to be installed at each corner of the bridge.
New top and bottom rail elements to be attached.



EXISTING RAIL POST MODIFICATION DETAIL

BILL OF MATERIAL

Item	Unit	Quantity
Bridge Rail Removal	Foot	292

DESIGNED - SMR	EXAMINED - <i>Timothy A. Anhalt</i> ACTING ENGINEER OF STRUCTURAL SERVICES	DATE - AUGUST 18, 2014
CHECKED - TLC	PASSED - <i>Carl Papp</i> ACTING ENGINEER OF BRIDGES AND STRUCTURES	
DRAWN - Kyle M. Stoffen		
CHECKED - SMR TLC		

STATE OF ILLINOIS
DEPARTMENT OF TRANSPORTATION

RAIL MODIFICATION DETAILS
SN 060-0031 (E.B.)

SHEET NO. 3 OF 8 SHEETS

F.A.I. RTE. 70	SECTION 60-111.12/RS-3	COUNTY MADISON	TOTAL SHEETS 242	SHEET NO. 198
CONTRACT NO. 76F13			ILLINOIS FED. AID PROJECT	