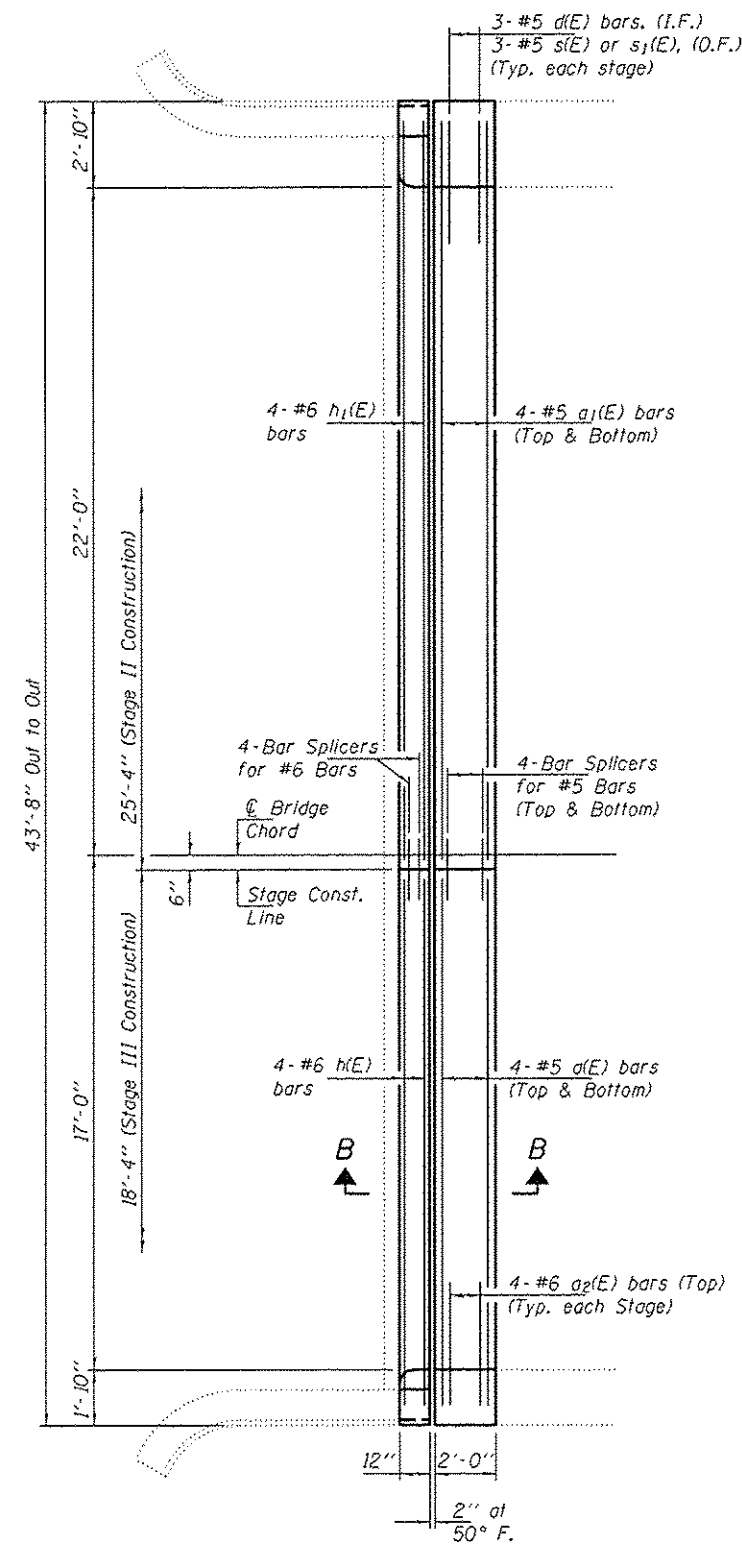


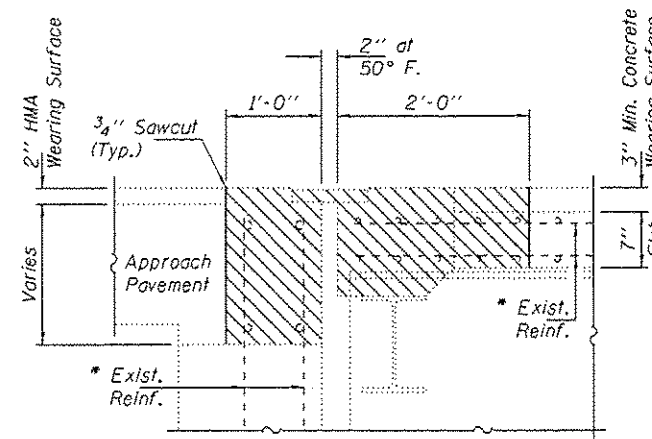
REMOVAL PLAN

West Abutment shown, East Abutment similar.

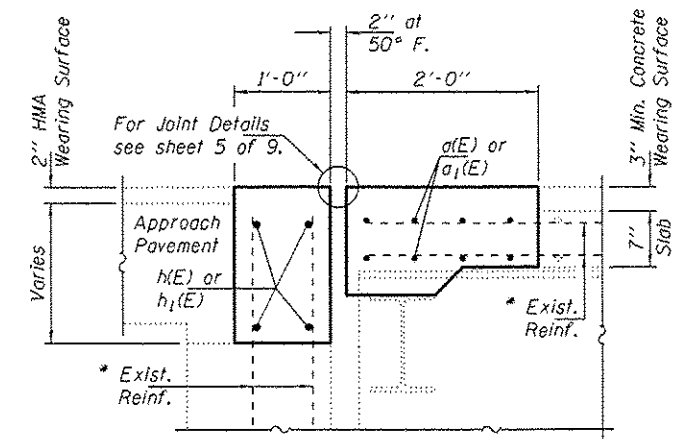


REPLACEMENT PLAN

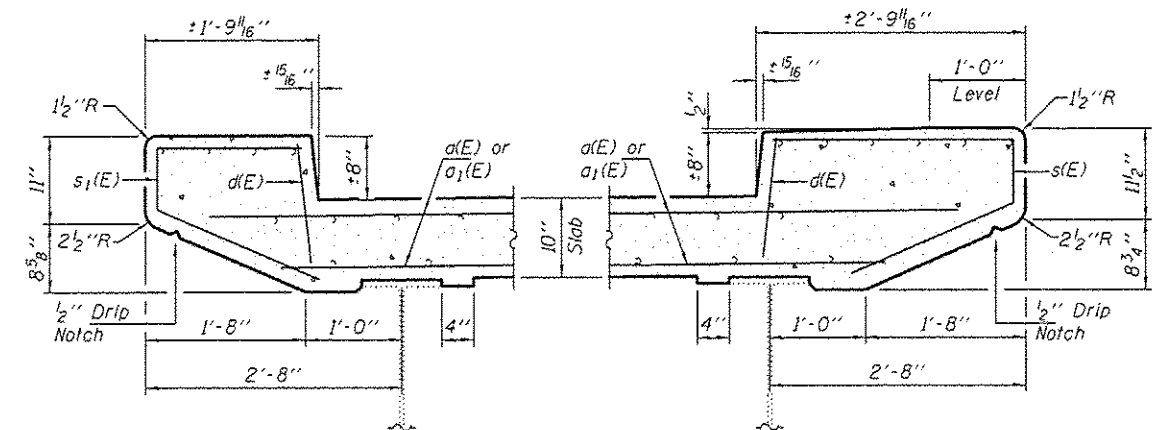
West Abutment shown, East Abutment similar.



SECTION A-A



SECTION B-B



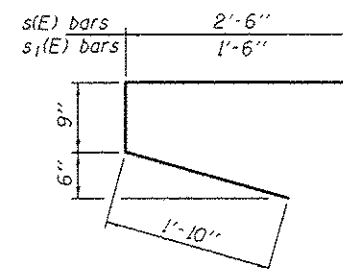
SOUTH CURB DETAILS

NORTH CURB DETAILS

* Existing reinforcement extending into the removal area shall be cleaned, straightened and incorporated into the new construction. Any reinforcement bars that are damaged during concrete removal shall be replaced with an approved bar splicer or anchorage system. Cost shall be included with Concrete Removal.

BILL OF MATERIAL

Bar	No.	Size	Length	Shape
a(E)	16	#5	17'-10"	—
a1(E)	16	#5	24'-10"	—
a2(E)	16	#6	4'-0"	—
d(E)	12	#4	1'-3"	—
h(E)	8	#6	17'-10"	—
h1(E)	8	#6	24'-10"	—
s(E)	6	#4	5'-1"	U
s1(E)	6	#4	4'-1"	U
Concrete Removal			Cu. Yd.	12.3
Concrete Superstructure			Cu. Yd.	12.3
Bar Splicers			Each	24
Reinforcement Bars, Epoxy Coated			Pound	1370



BARS s(E) & s1(E)

DESIGNED - SMR
 CHECKED - TLC
 DRAWN - Kyle M. Steffen
 CHECKED - SMR TLC

EXAMINED
 ACTING ENGINEER OF STRUCTURAL SERVICES
 PASSED
 ACTING ENGINEER OF BRIDGES AND STRUCTURES

DATE - AUGUST 18, 2014

STATE OF ILLINOIS
 DEPARTMENT OF TRANSPORTATION

EXPANSION JOINT REMOVAL & REPLACEMENT DETAILS
 SN 060-0032 (W.B.)

SHEET NO. 2 OF 9 SHEETS

F.A.I. RTE. SECTION COUNTY TOTAL SHEETS SHEET NO.
 70 60-111.12R5-3 MADISON 242 205
 CONTRACT NO. 76F13
 ILLINOIS FED. AID PROJECT