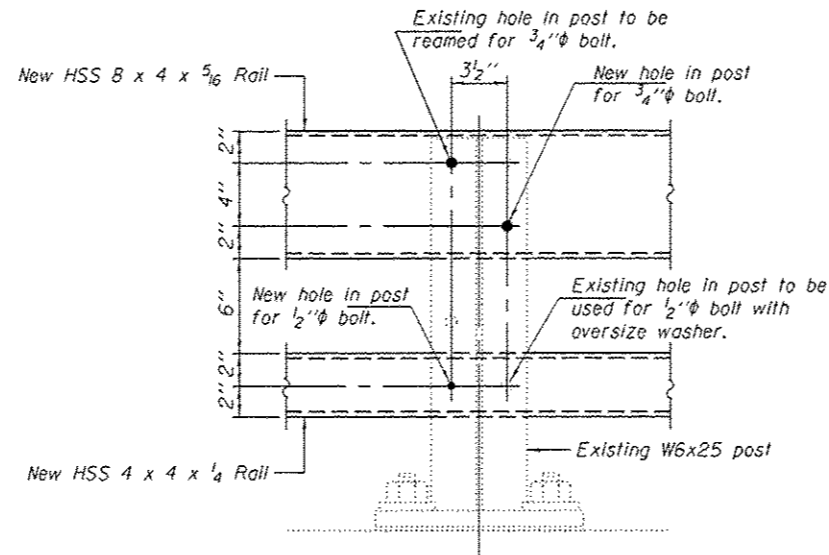


**RAIL MODIFICATION DETAIL**

Notes:  
 Existing top and bottom rail elements to be removed.  
 One new rail post to be installed at each corner of the bridge.  
 New top and bottom rail elements to be attached.



**EXISTING RAIL POST  
 MODIFICATION DETAIL**

**BILL OF MATERIAL**

Item	Unit	Quantity
Bridge Rail Removal	Foot	292

DESIGNED - SMR	EXAMINED - <i>Timothy A. [Signature]</i>	DATE - AUGUST 18, 2014
CHECKED - TLC	ACTING ENGINEER OF STRUCTURAL SERVICES	
DRAWN - Kyle M. Stoffen	PASSED - <i>Carl [Signature]</i>	
CHECKED - SMR TLC	ACTING ENGINEER OF BRIDGES AND STRUCTURES	

STATE OF ILLINOIS  
 DEPARTMENT OF TRANSPORTATION

RAIL MODIFICATION DETAILS  
 SN 060-0032 (W.B.)

F.A.I. RTE.	SECTION	COUNTY	TOTAL SHEETS	SHEET NO.
70	60-111.12)R5-3	MADISON	242	206
CONTRACT NO. 76F13			ILLINOIS FED. AID PROJECT	