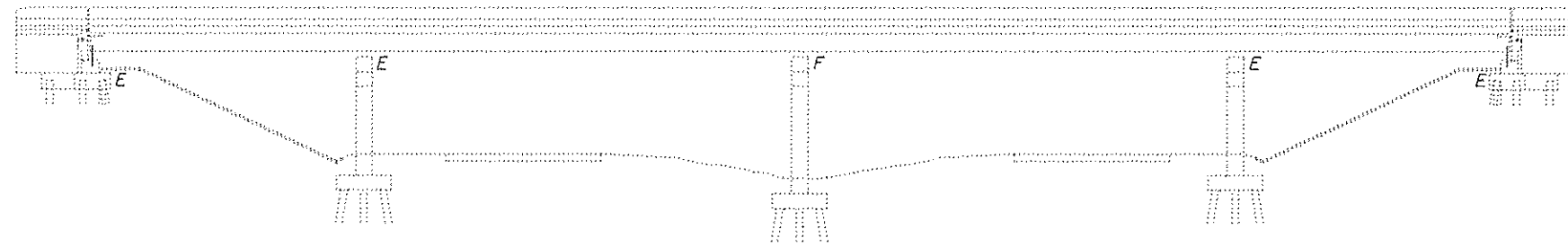
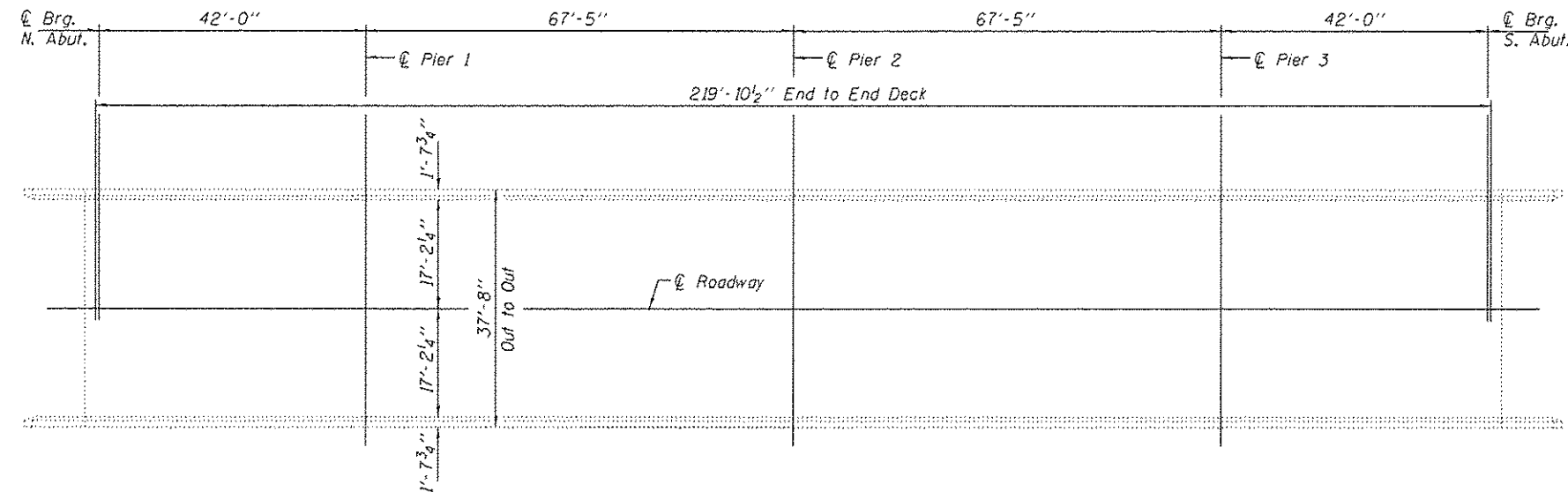


GENERAL NOTES

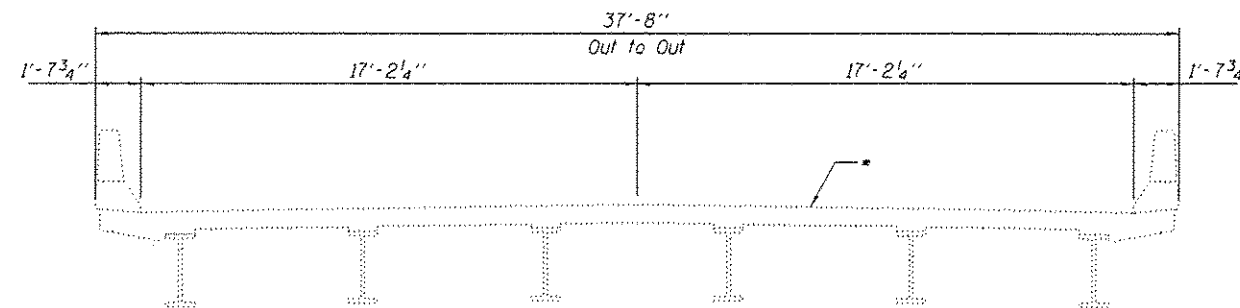
Plan dimensions and details relative to existing plans are subject to nominal construction variations. The Contractor shall field verify existing dimensions and details affecting new construction and make necessary approved adjustments prior to construction or ordering of materials. Such variations shall not be cause for additional compensation for a change in scope of the work, however, the Contractor will be paid for the quantity actually furnished at the unit price bid for the work.



ELEVATION

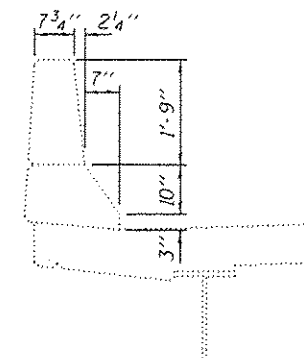


PLAN



CROSS SECTION

* Apply Bridge Deck Concrete Sealer to the deck surface and the face & top of the parapets.



SECTION THRU PARAPET



TOTAL BILL OF MATERIAL

ITEM	UNIT	QUANTITY
Bridge Deck Concrete Sealer	Sq. Ft.	9185

DESIGNED <i>[Signature]</i>	EXAMINED <i>[Signature]</i>	DATE AUGUST 18, 2014	STATE OF ILLINOIS DEPARTMENT OF TRANSPORTATION	PLAN AND ELEVATION II. 4 OVER FAI 70 SN 060-0108	F.A.I. RTE.	SECTION	COUNTY	TOTAL SHEETS	SHEET NO.
CHECKED <i>[Signature]</i>	PASSED <i>[Signature]</i>	REVISED			TO	60-11,12/RS-3	MADISON	242	219
DRAWN <i>[Signature]</i>	ACTING ENGINEER OF BRIDGES AND STRUCTURES	REVISED	SHEET NO. 1 OF 1 SHEETS			CONTRACT NO. T6F13			
CHECKED <i>[Signature]</i>		REVISED				ILLINOIS FED. AID PROJECT			

EXPIRES 11-30-2014