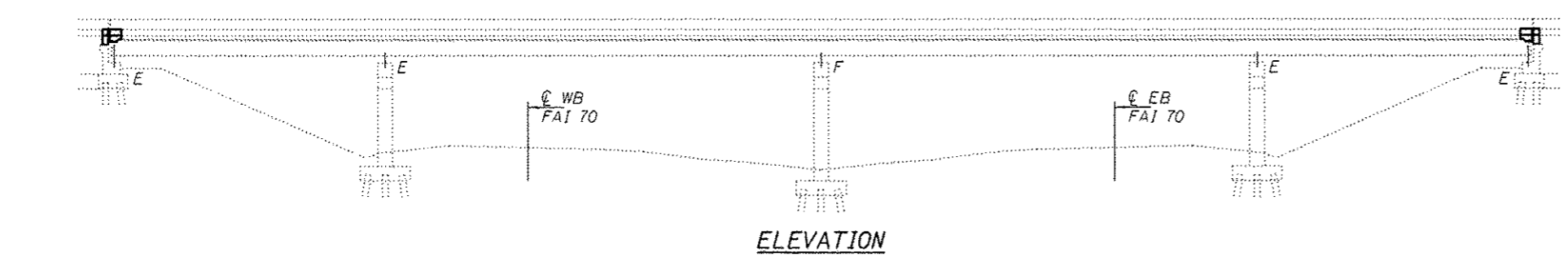
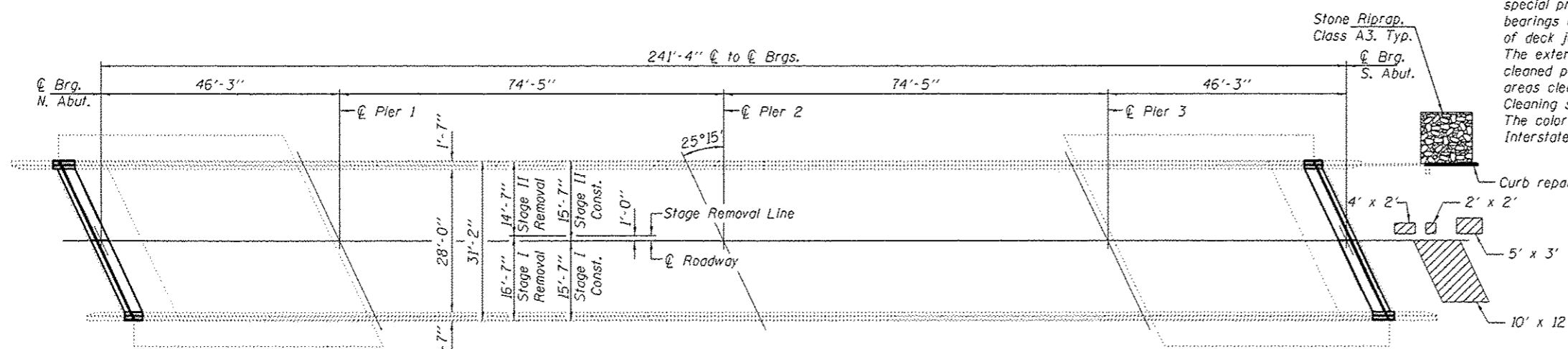


**GENERAL NOTES**

Reinforcement bars designated (E) shall be epoxy coated.  
 Prior to pouring the new concrete deck, all heavy or loose rust, loose mill scale, and other loose or potentially detrimental foreign material shall be removed from the surfaces in contact with concrete. Tightly adhered paint may remain unless otherwise noted. Removal shall be accomplished by methods that will not damage the steel and the cost will be included in the pay item covering removal of the existing concrete.  
 Plan dimensions and details relative to existing plans are subject to nominal construction variations. The Contractor shall field verify existing dimensions and details affecting new construction and make necessary approved adjustments prior to construction or ordering of materials. Such variations shall not be cause for additional compensation for a change in scope of the work, however, the Contractor will be paid for the quantity actually furnished at the unit price bid for the work.  
 Existing reinforcement bars extending into the removal area shall be cleaned, straightened and incorporated into the new construction. Any reinforcement bars that are damaged during concrete removal shall be replaced with an approved bar splicer or anchorage system. Cost included with Concrete Removal.  
 The new deck surface shall have its final finish tined according to Article 420.09(e)(1) of the Standard Specifications. Cost Included with Concrete Superstructure.  
 Joint openings shall be adjusted according to Article 520.04 of the Std. Specs. when the deck is poured at an ambient temperature other than 50° F.  
 The existing structural steel coating contains lead. The Contractor shall take appropriate precautions to deal with the presence of lead on this project.  
 Cleaning and painting of the existing structural steel shall be as specified in the special provision for "Cleaning and Painting Existing Steel Structures". All beams, bearings and other structural steel within 5 ft. (measured along beam) of either side of deck joints shall be cleaned per Near White Blast Cleaning - SSPC-SP10. The exterior surfaces and bottom of the bottom flange of the fascia beams shall be cleaned per Commercial Grade Power Tool Cleaning - SSPC-SP15. The designated areas cleaned per Near White Blast Cleaning and per Commercial Grade Power Tool Cleaning shall be painted according to the requirements of Paint System 1 - OZ/E/U. The color of the final finish coat for all interior and exterior steel surfaces shall be Interstate Green, Munsell No. 7.5G 4/8.

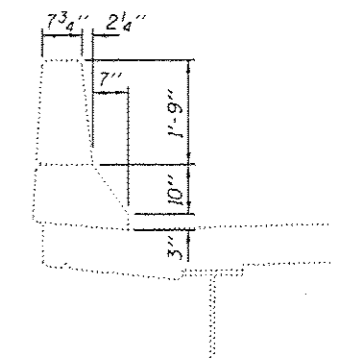
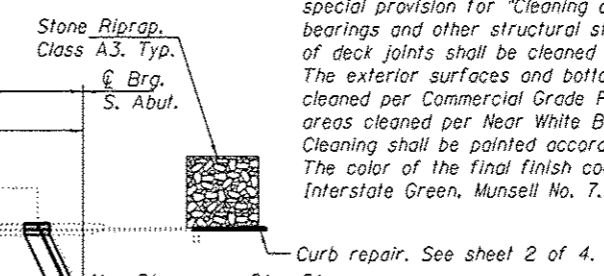


**ELEVATION**

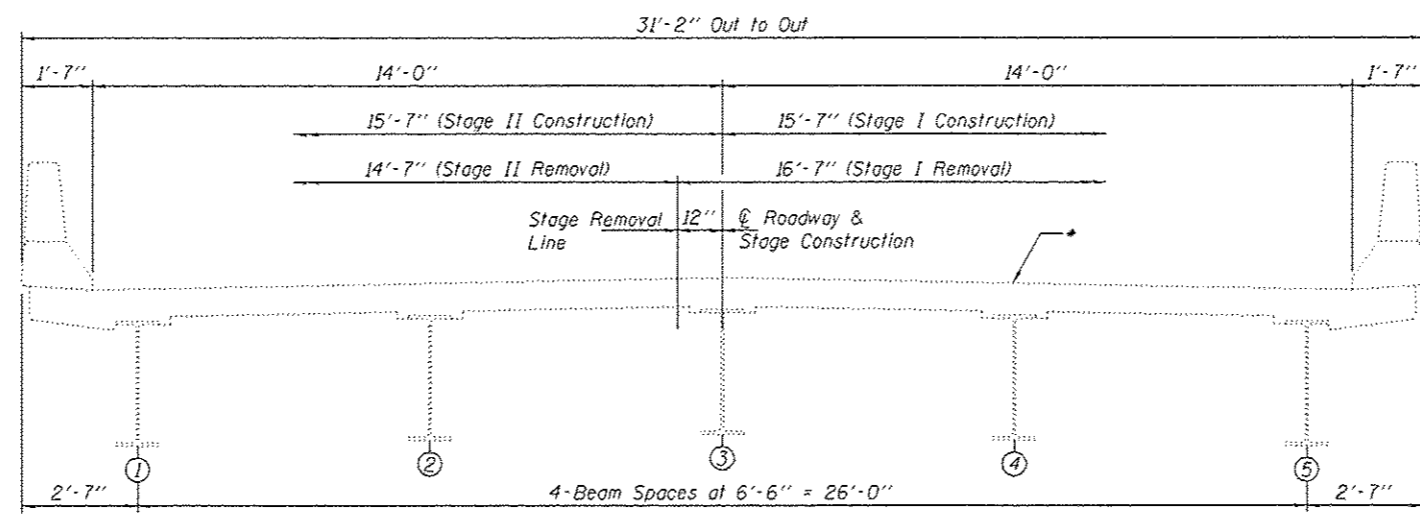


**PLAN**

▨ - Structural Repair of Concrete (Depth ≤ 5')



**SECTION THRU PARAPET**



**CROSS SECTION**  
(Looking South)

\* Apply Bridge Deck Concrete Sealer to the deck surface and the face & top of the parapets.

**TOTAL BILL OF MATERIAL**

ITEM	UNIT	QUANTITY
Concrete Removal	Cu. Yd.	10.0
Concrete Superstructure	Cu. Yd.	10.1
Preformed Joint Strip Seal	Foot	67
Reinforcement Bars, Epoxy Coated	Pound	1400
Bar Splacers	Each	24
Bridge Deck Concrete Sealer	Sq. Ft.	8590
Cleaning and Painting Steel Bridge No. 7	L.S.	1
Containment and Disposal of Lead Paint Cleaning Residuals, Bridge No. 7	L.S.	1
Stone Riprap Class A3	Sq. Yd.	11.1
Structural Repair of Concrete (Depth ≤ 5')	Sq. Ft.	135



EXPIRES 11-30-2014

DESIGNED: <i>Tom Chubb</i>	EXAMINED: <i>Timothy A. Adams</i>	DATE: AUGUST 18, 2014
CHECKED: <i>Stephen M. Ryan</i>	ACTING ENGINEER OF STRUCTURAL SERVICES	
DRAWN: <i>baliva</i>	PASSED: <i>David Carl Puzey</i>	REVISED:
CHECKED: <i>TLC SMR</i>	ACTING ENGINEER OF BRIDGES AND STRUCTURES	REVISED:

STATE OF ILLINOIS  
DEPARTMENT OF TRANSPORTATION

PLAN AND ELEVATION  
MARINE ROAD OVER FAI 70  
SN 060-0164

F.A.I. RTE.	SECTION	COUNTY	TOTAL SHEETS	SHEET NO.
10	60-111,121RS-3	MADISON	242	215
CONTRACT NO. 76F13			ILLINOIS FED. AID PROJECT	

SHEET NO. 1 OF 4 SHEETS