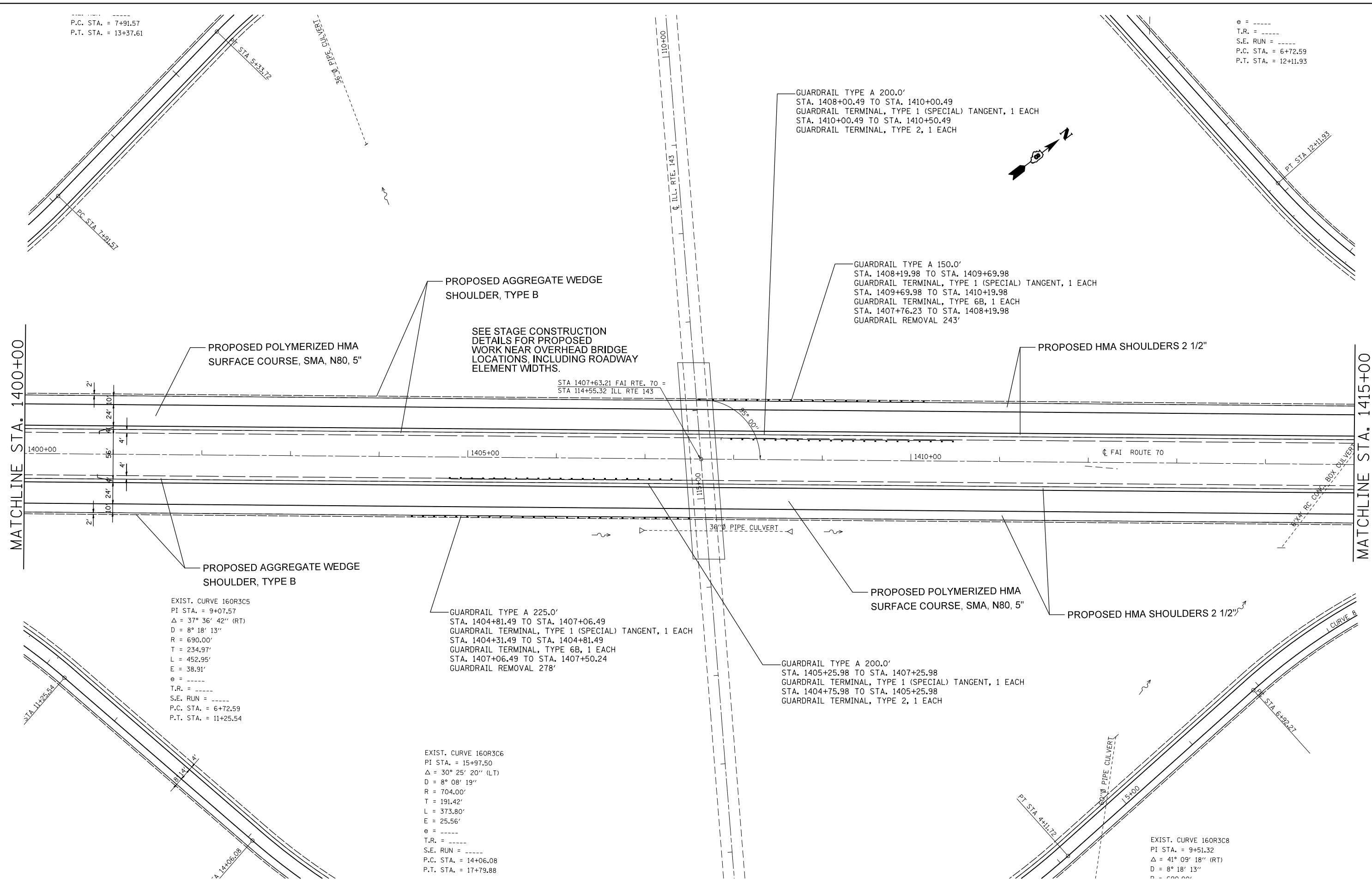


P.C. STA. = 7+91.57
P.T. STA. = 13+37.61

e = -----
T.R. = -----
S.E. RUN = -----
P.C. STA. = 6+72.59
P.T. STA. = 12+11.93



EXIST. CURVE 160R3C5
PI STA. = 9+07.57
Δ = 37° 36' 42" (RT)
D = 8° 18' 13"
R = 690.00'
T = 234.97'
L = 452.95'
E = 38.91'
e = -----
T.R. = -----
S.E. RUN = -----
P.C. STA. = 6+72.59
P.T. STA. = 11+25.54

GUARDRAIL TYPE A 225.0'
STA. 1404+81.49 TO STA. 1407+06.49
GUARDRAIL TERMINAL, TYPE 1 (SPECIAL) TANGENT, 1 EACH
STA. 1404+31.49 TO STA. 1404+81.49
GUARDRAIL TERMINAL, TYPE 6B, 1 EACH
STA. 1407+06.49 TO STA. 1407+50.24
GUARDRAIL REMOVAL 278'

EXIST. CURVE 160R3C6
PI STA. = 15+97.50
Δ = 30° 25' 20" (LT)
D = 8° 08' 19"
R = 704.00'
T = 191.42'
L = 373.80'
E = 25.56'
e = -----
T.R. = -----
S.E. RUN = -----
P.C. STA. = 14+06.08
P.T. STA. = 17+79.88

EXIST. CURVE 160R3C8
PI STA. = 9+51.32
Δ = 41° 09' 18" (RT)
D = 8° 18' 13"
R = 690.00'

FILE NAME =	USER NAME = milleraj	DESIGNED -	REVISED -
et:\pw\work\p1dot\milleraj\20279918\2876f13-sh-t-plan.dgn		DRAWN -	REVISED -
PLOT SCALE = 100.0000' / in.		CHECKED -	REVISED -
PLOT DATE = 6/27/2014		DATE -	REVISED -

**STATE OF ILLINOIS
DEPARTMENT OF TRANSPORTATION**

PLAN VIEW
SCALE: 20 SHEET NO. 26 OF 49 SHEETS STA. 1400+00 TO STA. 1415+00

F.A.I. RTE.	SECTION	COUNTY	TOTAL SHEETS	SHEET NO.
70	60-(11,12)RS-3	MADISON	242	64
CONTRACT NO. 76F13				
FED. ROAD DIST. NO. ILLINOIS FED. AID PROJECT				