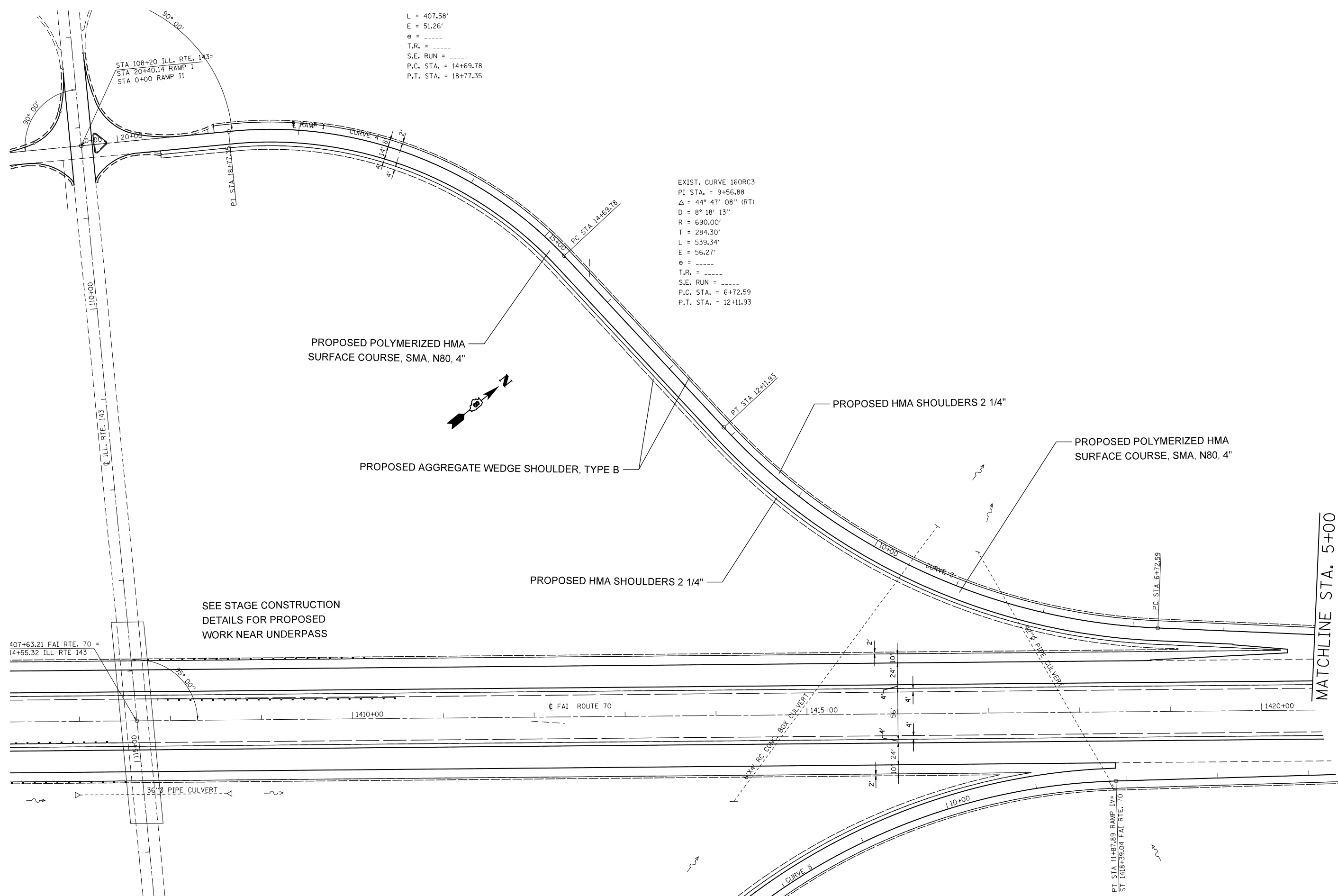


L = 407.58'
 E = 51.26'
 e = -----
 T.R. = -----
 S.E. RUN = -----
 P.C. STA. = 14+69.78
 P.T. STA. = 18+77.35

EXIST. CURVE 160RC3
 PI STA. = 9+56.88
 $\Delta = 44^\circ 47' 08''$ (RT)
 D = 8° 18' 13"
 R = 690.00'
 T = 284.30'
 L = 539.34'
 E = 56.27'
 e = -----
 T.R. = -----
 S.E. RUN = -----
 P.C. STA. = 6+72.59
 P.T. STA. = 12+11.93



SEE STAGE CONSTRUCTION
 DETAILS FOR PROPOSED
 WORK NEAR UNDERPASS

MATCHLINE STA. 5+00

FILE NAME =	USER NAME = milleraj	DESIGNED -	REVISED -
et:\pw\work\p\dot\milleraj\0279918\087613-sht-plan.dgn		DRAWN -	REVISED -
	PLOT SCALE = 100.0000' / in.	CHECKED -	REVISED -
	PLOT DATE = 6/27/2014	DATE -	REVISED -

**STATE OF ILLINOIS
 DEPARTMENT OF TRANSPORTATION**

IL 143 RAMP I DETAILS

SCALE: 20 SHEET NO. 34 OF 49 SHEETS STA. TO STA.

F.A.I. RTE.	SECTION	COUNTY	TOTAL SHEETS	SHEET NO.
70	60-(11,12)RS-3	MADISON	242	72
CONTRACT NO. 76F13				
FED. ROAD DIST. NO. ILLINOIS FED. AID PROJECT				