

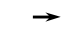


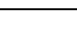
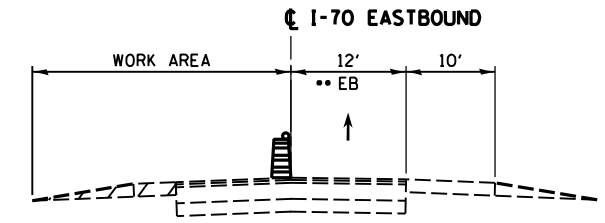
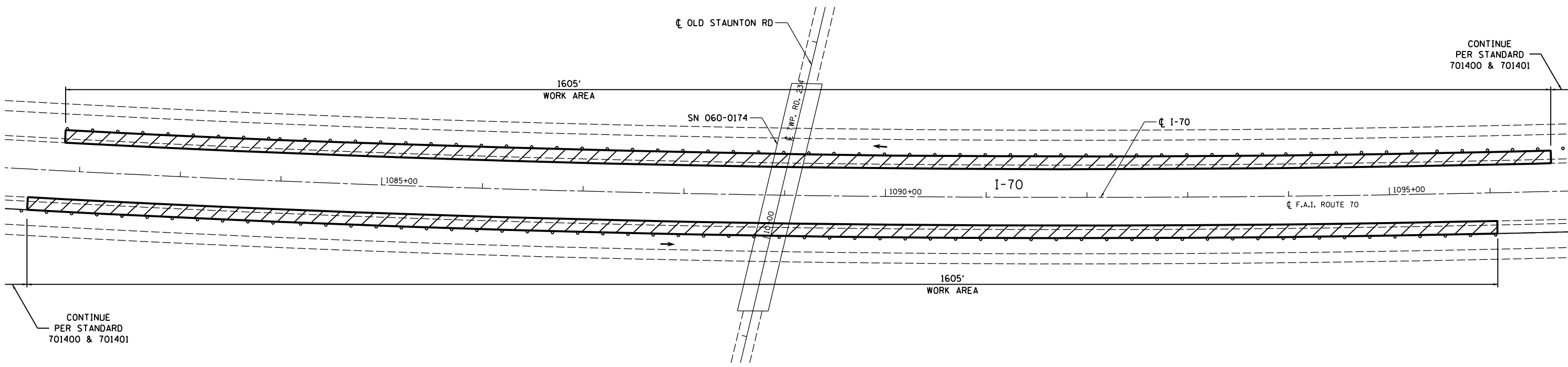


LEGEND	
	WORK AREA
	IMPACT ATTENUATOR, TEMPORARY (NON-REDIRECTIVE) TEST LEVEL 3
	DIRECTION OF TRAVEL/LANE MAINTAINED
	BARRICADES OR DRUMS
	TEMPORARY CONCRETE BARRIER
	TEMPORARY PAVEMENT MARKING

- NOTES:**
- REFER TO STANDARD 701400 FOR SIGNING AND MARKING OF APPROACH TO LANE CLOSURE
 - REFER TO STANDARD 701401 FOR SIGNING AND MARKING OF LANE CLOSURE
 - REFER TO SPECIAL PROVISIONS FOR WORK INCLUDED IN THIS STAGE



SECTION - I-70 EASTBOUND
SECTION APPLIES TO I-70 WESTBOUND
•• LANES SHIFTED AS SHOWN IN STAGING PLANS



FILE NAME = c:\pwwork\pwwork\hoffmanj\d0279918\d876f13-sht-staging-01.dgn CH2MHILL	USER NAME = hoffmanj PLOT SCALE = 100.0000' / in. PLOT DATE = 6/27/2014	DESIGNED - TN DRAWN - JH CHECKED - GL DATE - 4/18/2014	REVISED - REVISED - REVISED - REVISED -	STATE OF ILLINOIS DEPARTMENT OF TRANSPORTATION	TRAFFIC CONTROL AND PROTECTION SPECIAL I-70 UNDER OLD STAUNTON ROAD - STAGE 1	F.A.I. RTE. = 70 SECTION = 60-(11,12) RS-3 COUNTY = MADISON TOTAL SHEETS = 242 SHEET NO. = 94	CONTRACT NO. 76F13 ILLINOIS FED. AID PROJECT
	SCALE:	SHEET NO. 1 OF 24 SHEETS	STA. TO STA.				