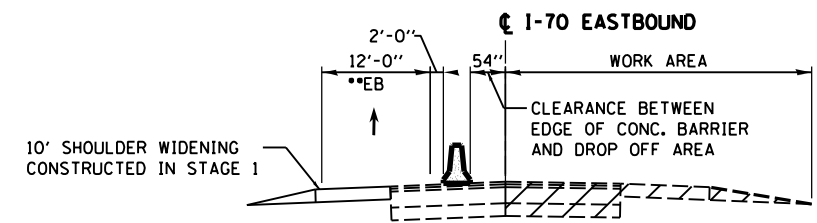
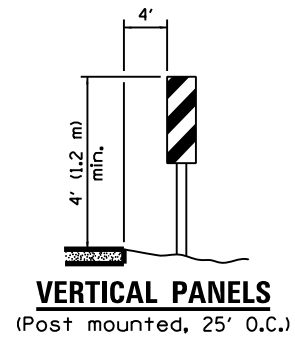
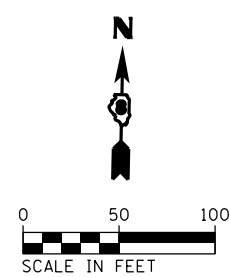
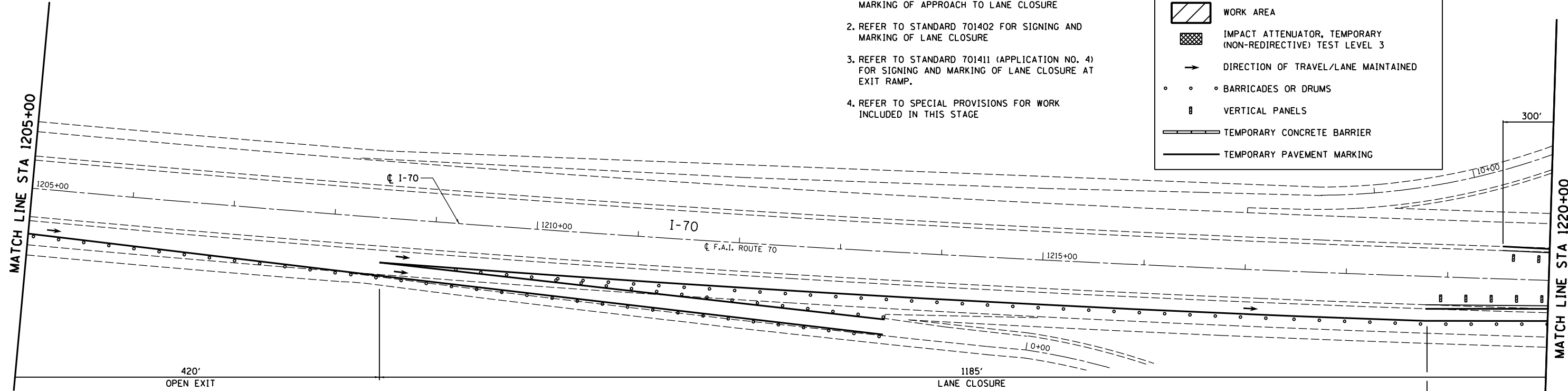


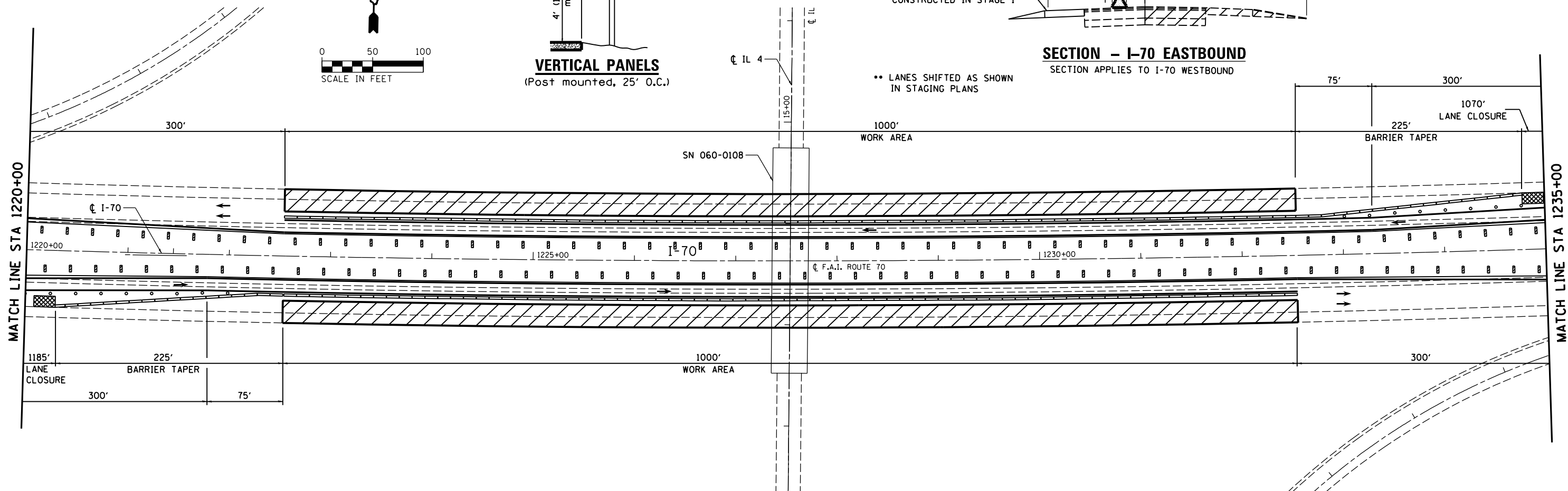
- NOTES:**
- REFER TO STANDARD 701400 FOR SIGNING AND MARKING OF APPROACH TO LANE CLOSURE
 - REFER TO STANDARD 701402 FOR SIGNING AND MARKING OF LANE CLOSURE
 - REFER TO STANDARD 701411 (APPLICATION NO. 4) FOR SIGNING AND MARKING OF LANE CLOSURE AT EXIT RAMP.
 - REFER TO SPECIAL PROVISIONS FOR WORK INCLUDED IN THIS STAGE

LEGEND

- WORK AREA
- IMPACT ATTENUATOR, TEMPORARY (NON-REDIRECTIVE) TEST LEVEL 3
- DIRECTION OF TRAVEL/LANE MAINTAINED
- BARRICADES OR DRUMS
- VERTICAL PANELS
- TEMPORARY CONCRETE BARRIER
- TEMPORARY PAVEMENT MARKING



SECTION - I-70 EASTBOUND
SECTION APPLIES TO I-70 WESTBOUND



| | | | |
|--|------------------------------|------------------|-----------|
| FILE NAME = | USER NAME = hoffmanj | DESIGNED - TN | REVISED - |
| es:\pwwork\pwwork\hoffmanj\0279918\ad876f13-sht-staging-06.dgn | | DRAWN - JH | REVISED - |
| CH2MHILL | PLOT SCALE = 100.0000' / in. | CHECKED - GL | REVISED - |
| | PLOT DATE = 6/27/2014 | DATE - 4/18/2014 | REVISED - |

**STATE OF ILLINOIS
DEPARTMENT OF TRANSPORTATION**

**TRAFFIC CONTROL AND PROTECTION SPECIAL
I-70 UNDER IL 4 - STAGE 2**

| | | | | |
|---------------------------|-------------------------|--------------------|------------------|--------------|
| F.A.I. RTE. 70 | SECTION 60-(11,12) RS-3 | COUNTY MADISON | TOTAL SHEETS 242 | SHEET NO. 99 |
| DRAWING NO. | | CONTRACT NO. 76F13 | | |
| ILLINOIS FED. AID PROJECT | | | | |

SCALE: SHEET NO. 6 OF 24 SHEETS STA. TO STA.