

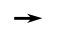

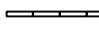
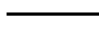
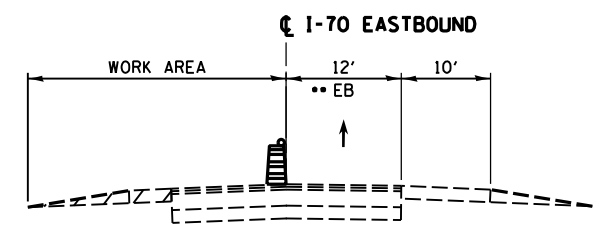


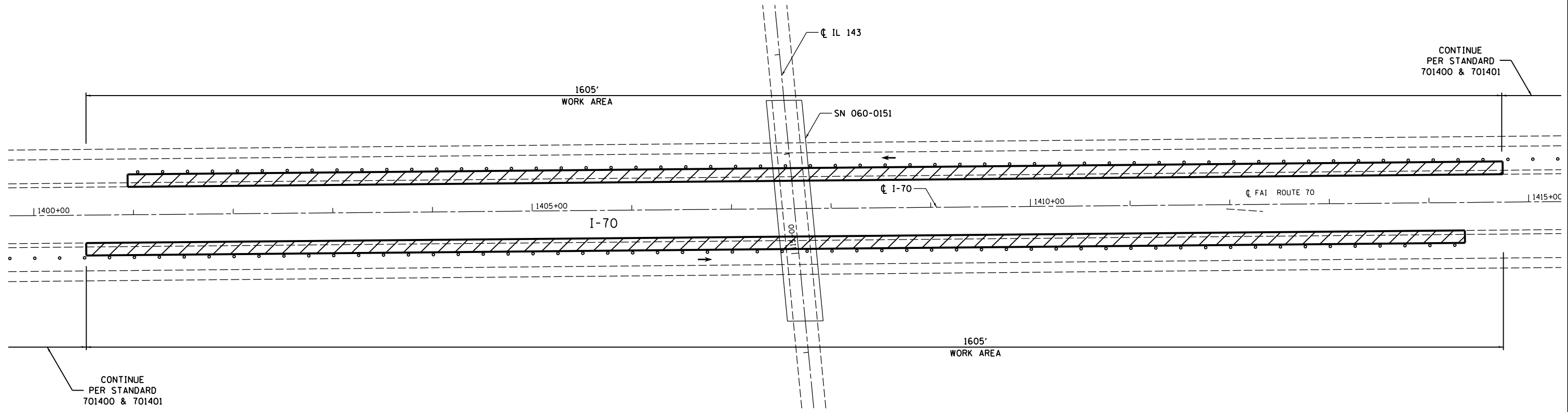
LEGEND	
	WORK AREA
	IMPACT ATTENUATOR, TEMPORARY (NON-REDIRECTIVE) TEST LEVEL 3
	DIRECTION OF TRAVEL/LANE MAINTAINED
	BARRICADES OR DRUMS
	TEMPORARY CONCRETE BARRIER
	TEMPORARY PAVEMENT MARKING

- NOTES:**
- REFER TO STANDARD 701400 FOR SIGNING AND MARKING OF APPROACH TO LANE CLOSURE
  - REFER TO STANDARD 701401 FOR SIGNING AND MARKING OF LANE CLOSURE
  - REFER TO SPECIAL PROVISIONS FOR WORK INCLUDED IN THIS STAGE



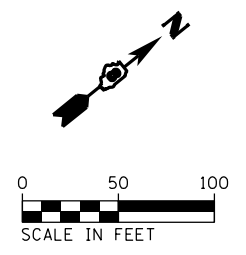
•• LANES SHIFTED AS SHOWN IN STAGING PLANS

**SECTION - I-70 EASTBOUND**  
SECTION APPLIES TO I-70 WESTBOUND



CONTINUE PER STANDARD 701400 & 701401

CONTINUE PER STANDARD 701400 & 701401



FILE NAME = c:\pwwork\pwwork\hoffmanj\d0279918\d876f13-sht-staging-12.dgn <b>CH2MHILL</b>	USER NAME = hoffmanj	DESIGNED - TN	REVISED -	<b>STATE OF ILLINOIS</b> <b>DEPARTMENT OF TRANSPORTATION</b>	<b>TRAFFIC CONTROL AND PROTECTION SPECIAL</b> <b>I-70 UNDER IL 143 - STAGE 1</b>	F.A.I. RTE. 70	SECTION 60-(11,12) RS-3	COUNTY MADISON	TOTAL SHEETS 242	SHEET NO. 105
	PLOT SCALE = 100.0000' / in.	CHECKED - GL	DATE - 4/18/2014			SCALE:	SHEET NO. 12 OF 24 SHEETS	STA. TO STA.	<b>DRAWING NO. CONTRACT NO. 76F13</b>	