

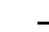


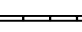

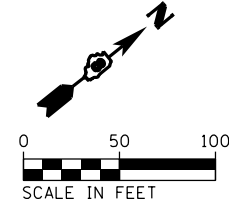
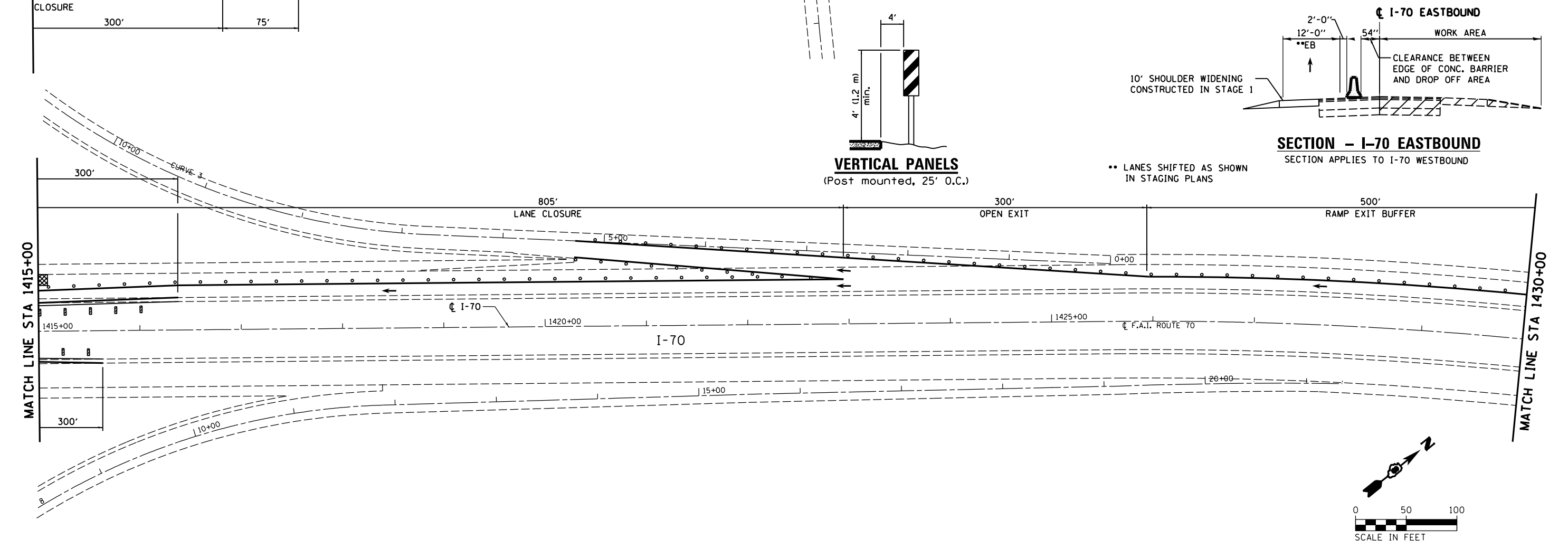
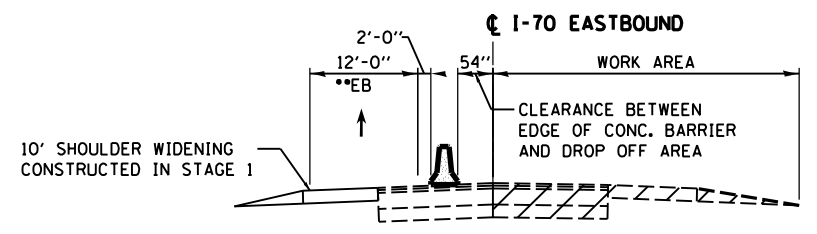
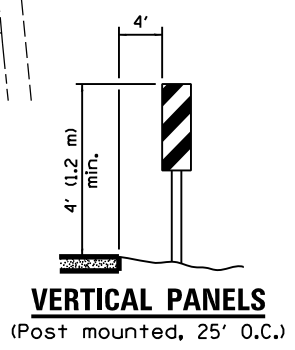
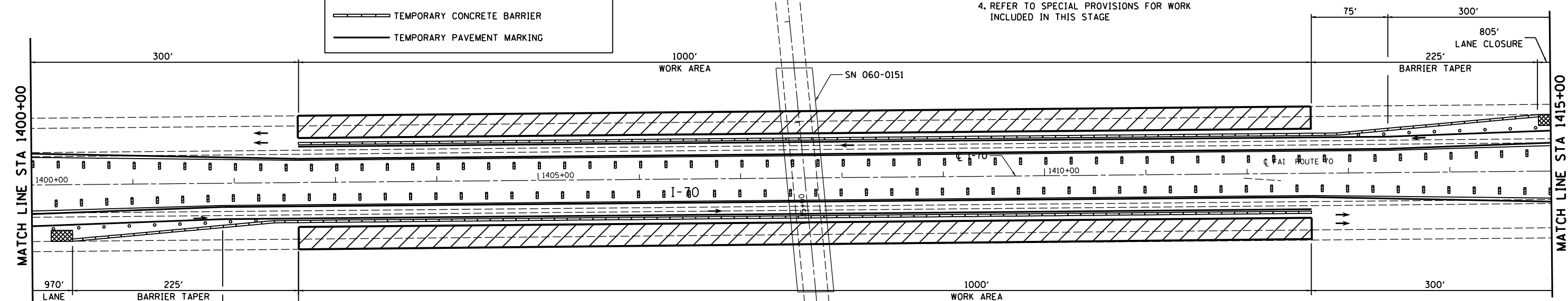


LEGEND

-  WORK AREA
-  IMPACT ATTENUATOR, TEMPORARY (NON-REDIRECTIVE) TEST LEVEL 3
-  DIRECTION OF TRAVEL/LANE MAINTAINED
-  BARRICADES OR DRUMS
-  VERTICAL PANELS
-  TEMPORARY CONCRETE BARRIER
-  TEMPORARY PAVEMENT MARKING

- NOTES:**
- REFER TO STANDARD 701400 FOR SIGNING AND MARKING OF APPROACH TO LANE CLOSURE
 - REFER TO STANDARD 701402 FOR SIGNING AND MARKING OF LANE CLOSURE
 - REFER TO STANDARD 701411 (APPLICATION NO. 4) FOR SIGNING AND MARKING OF LANE CLOSURE AT EXIT RAMP.
 - REFER TO SPECIAL PROVISIONS FOR WORK INCLUDED IN THIS STAGE



FILE NAME = es:\pwork\pwork\dot\hoffmanj\0279918\ad876f13-sht-staging-14.dgn CH2MHILL	USER NAME = hoffmanj PLOT SCALE = 100.0000' / in. PLOT DATE = 6/27/2014	DESIGNED - TN DRAWN - JH CHECKED - CL DATE - 4/18/2014	REVISED - REVISED - REVISED - REVISED -	STATE OF ILLINOIS DEPARTMENT OF TRANSPORTATION	TRAFFIC CONTROL AND PROTECTION SPECIAL I-70 UNDER IL 143 - STAGE 2	F.A.I. RTE. 70	SECTION 60-(11,12) RS-3	COUNTY MADISON	TOTAL SHEETS 242	SHEET NO. 107
	SCALE: SHEET NO. 14 OF 24 SHEETS STA. TO STA.		DRAWING NO. CONTRACT NO. 76F13			ILLINOIS FED. AID PROJECT				