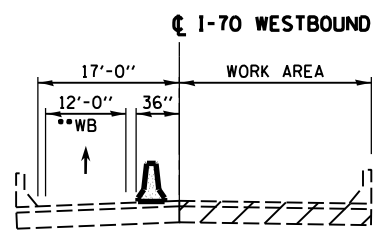
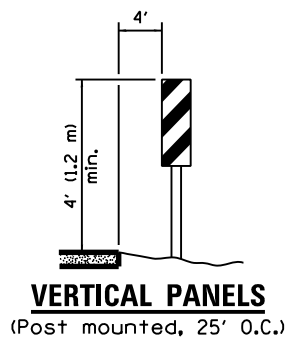


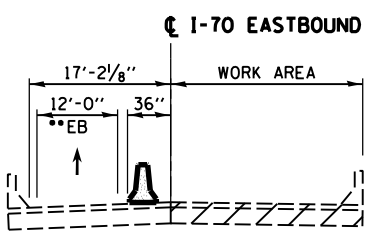
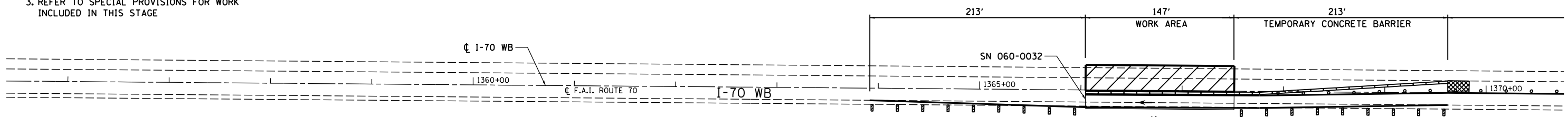
LEGEND	
	WORK AREA
	IMPACT ATTENUATOR, TEMPORARY (NON-REDIRECTIVE) TEST LEVEL 3
	DIRECTION OF TRAVEL/LANE MAINTAINED
	BARRICADES OR DRUMS
	VERTICAL PANELS
	TEMPORARY CONCRETE BARRIER
	TEMPORARY PAVEMENT MARKING



SECTION - I-70 WESTBOUND (0032)

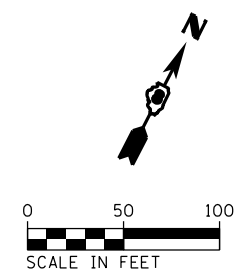
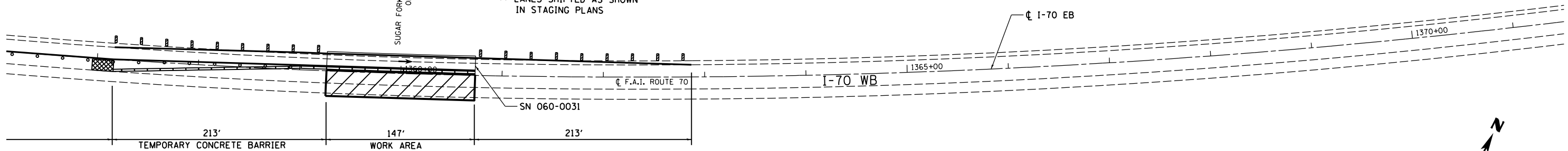
•• LANES SHIFTED AS SHOWN IN STAGING PLANS

- NOTES:**
1. REFER TO STANDARD 701400 FOR SIGNING AND MARKING OF APPROACH TO LANE CLOSURE
 2. REFER TO STANDARD 701402 FOR SIGNING AND MARKING OF LANE CLOSURE
 3. REFER TO SPECIAL PROVISIONS FOR WORK INCLUDED IN THIS STAGE



SECTION - I-70 EASTBOUND (0031)

•• LANES SHIFTED AS SHOWN IN STAGING PLANS



FILE NAME = c:\pwwork\pwwork\hoffmanj\d0279918\d876f13-sht-staging-21.dgn CH2MHILL	USER NAME = hoffmanj	DESIGNED - TN	REVISED -	STATE OF ILLINOIS DEPARTMENT OF TRANSPORTATION	TRAFFIC CONTROL AND PROTECTION SPECIAL I-70 AT STRUCTURE 060-0031 & 060-0032 - STAGE 2	F.A.I. RTE. 70	SECTION 60-(11,12) RS-3	COUNTY MADISON	TOTAL SHEETS 242	SHEET NO. 114
	PLOT SCALE = 100.0000' / in.	CHECKED - GL	DATE - 4/18/2014			REVISED -	DRAWING NO.	CONTRACT NO. 76F13	ILLINOIS FED. AID PROJECT	