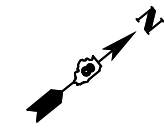
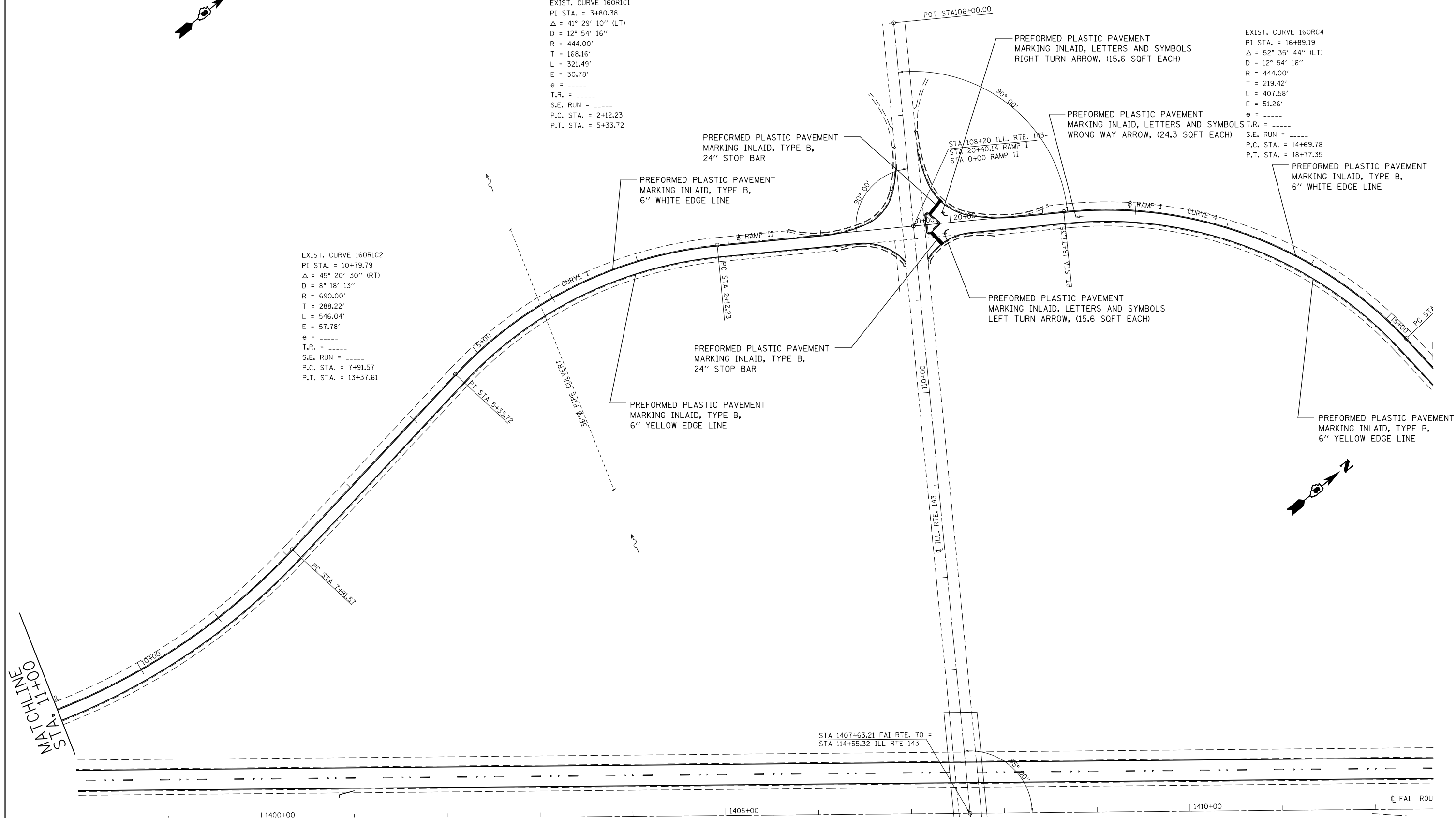


EXIST. CURVE 160R1C1
 PI STA. = 3+80.38
 Δ = 41° 29' 10" (LT)
 D = 12° 54' 16"
 R = 444.00'
 T = 168.16'
 L = 321.49'
 E = 30.78'
 θ = -----
 T.R. = -----
 S.E. RUN = -----
 P.C. STA. = 2+12.23
 P.T. STA. = 5+33.72

EXIST. CURVE 160R1C2
 PI STA. = 10+79.79
 Δ = 45° 20' 30" (RT)
 D = 8° 18' 13"
 R = 690.00'
 T = 288.22'
 L = 546.04'
 E = 57.78'
 θ = -----
 T.R. = -----
 S.E. RUN = -----
 P.C. STA. = 7+91.57
 P.T. STA. = 13+37.61

EXIST. CURVE 160R4
 PI STA. = 16+89.19
 Δ = 52° 35' 44" (LT)
 D = 12° 54' 16"
 R = 444.00'
 T = 219.42'
 L = 407.58'
 E = 51.26'
 θ = -----
 T.R. = -----
 S.E. RUN = -----
 P.C. STA. = 14+69.78
 P.T. STA. = 18+77.35



STATIONING
 STA 1400+00

FILE NAME =	USER NAME = milleraj	DESIGNED -	REVISED -
et:\pw\work\pmdot\milleraj\20279918\d876f13-sht-pmk.dgn		DRAWN -	REVISED -
PLOT SCALE = 100.0000' / in.		CHECKED -	REVISED -
PLOT DATE = 6/27/2014		DATE -	REVISED -

**STATE OF ILLINOIS
 DEPARTMENT OF TRANSPORTATION**

IL 143 RAMP I & II PAVEMENT MARKING PLAN

SCALE: 20 SHEET NO. 37 OF 49 SHEETS STA. TO STA.

F.A.I. RTE.	SECTION	COUNTY	TOTAL SHEETS	SHEET NO.
70	60-(11,12)RS-3	MADISON	242	161
CONTRACT NO. 76F13				
FED. ROAD DIST. NO. ILLINOIS FED. AID PROJECT				