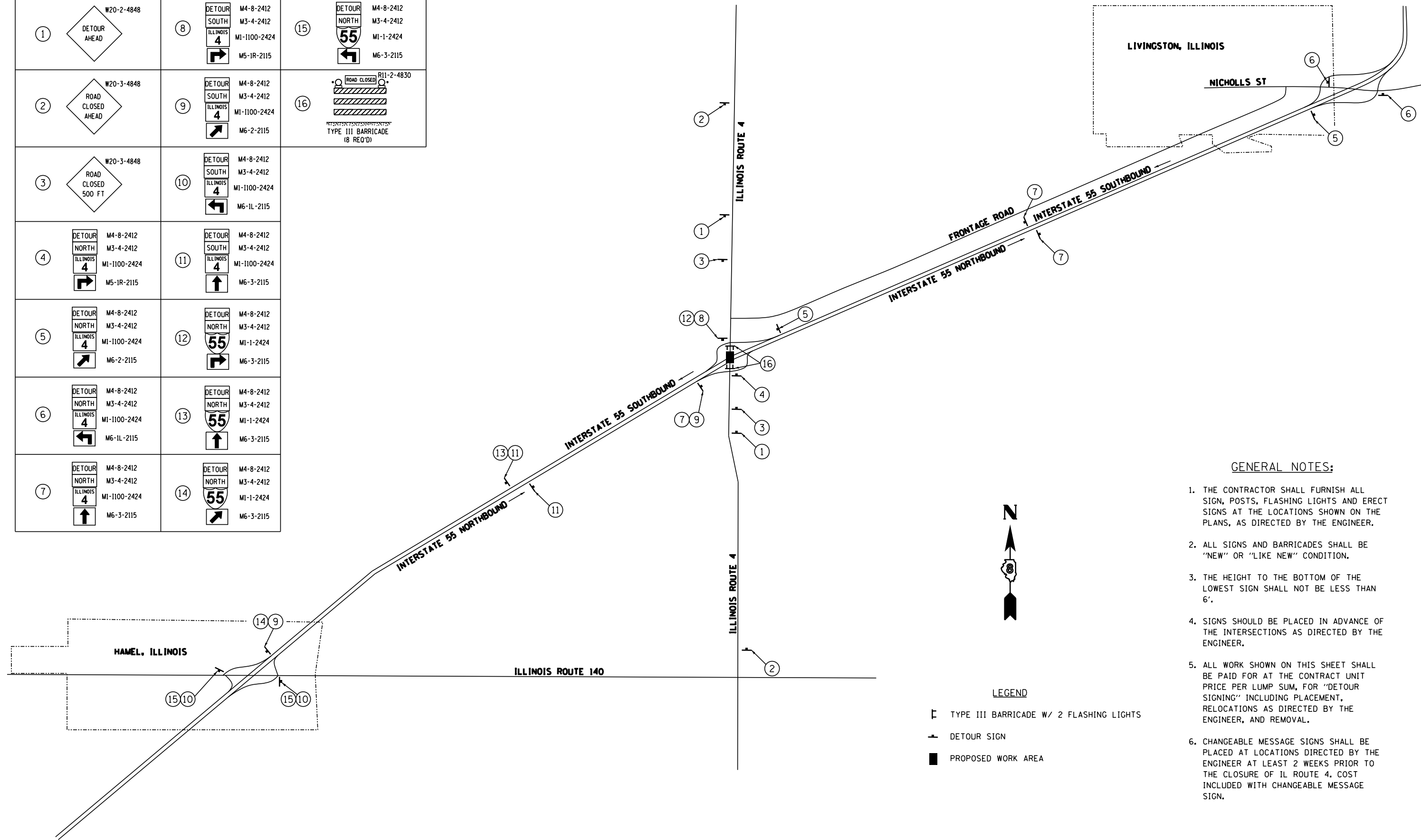


DETOUR SIGNING

1	W20-2-4848 DETOUR AHEAD	8	DETOUR SOUTH ILLINOIS 4 M4-8-2412 M3-4-2412 MI-1100-2424 M5-1R-2115	15	DETOUR NORTH ILLINOIS 55 M4-8-2412 M3-4-2412 MI-1-2424 M6-3-2115
2	W20-3-4848 ROAD CLOSED AHEAD	9	DETOUR SOUTH ILLINOIS 4 M4-8-2412 M3-4-2412 MI-1100-2424 M6-2-2115	16	R11-2-4830 ROAD CLOSED TYPE III BARRICADE (8 REQ'D)
3	W20-3-4848 ROAD CLOSED 500 FT	10	DETOUR SOUTH ILLINOIS 4 M4-8-2412 M3-4-2412 MI-1100-2424 M6-1L-2115	11	DETOUR SOUTH ILLINOIS 4 M4-8-2412 M3-4-2412 MI-1100-2424 M6-3-2115
4	DETOUR NORTH ILLINOIS 4 M4-8-2412 M3-4-2412 MI-1100-2424 M5-1R-2115	12	DETOUR NORTH ILLINOIS 55 M4-8-2412 M3-4-2412 MI-1-2424 M6-2-2115	13	DETOUR NORTH ILLINOIS 55 M4-8-2412 M3-4-2412 MI-1-2424 M6-3-2115
5	DETOUR NORTH ILLINOIS 4 M4-8-2412 M3-4-2412 MI-1100-2424 M6-2-2115	14	DETOUR NORTH ILLINOIS 55 M4-8-2412 M3-4-2412 MI-1-2424 M6-3-2115		
6	DETOUR NORTH ILLINOIS 4 M4-8-2412 M3-4-2412 MI-1100-2424 M6-1L-2115				
7	DETOUR NORTH ILLINOIS 4 M4-8-2412 M3-4-2412 MI-1100-2424 M6-3-2115				



GENERAL NOTES:

1. THE CONTRACTOR SHALL FURNISH ALL SIGN, POSTS, FLASHING LIGHTS AND ERECT SIGNS AT THE LOCATIONS SHOWN ON THE PLANS, AS DIRECTED BY THE ENGINEER.
2. ALL SIGNS AND BARRICADES SHALL BE "NEW" OR "LIKE NEW" CONDITION.
3. THE HEIGHT TO THE BOTTOM OF THE LOWEST SIGN SHALL NOT BE LESS THAN 6'.
4. SIGNS SHOULD BE PLACED IN ADVANCE OF THE INTERSECTIONS AS DIRECTED BY THE ENGINEER.
5. ALL WORK SHOWN ON THIS SHEET SHALL BE PAID FOR AT THE CONTRACT UNIT PRICE PER LUMP SUM, FOR "DETOUR SIGNING" INCLUDING PLACEMENT, RELOCATIONS AS DIRECTED BY THE ENGINEER, AND REMOVAL.
6. CHANGEABLE MESSAGE SIGNS SHALL BE PLACED AT LOCATIONS DIRECTED BY THE ENGINEER AT LEAST 2 WEEKS PRIOR TO THE CLOSURE OF IL ROUTE 4. COST INCLUDED WITH CHANGEABLE MESSAGE SIGN.



LEGEND

- TYPE III BARRICADE W/ 2 FLASHING LIGHTS
- DETOUR SIGN
- PROPOSED WORK AREA

FILE NAME =	USER NAME = \$USER\$	DESIGNED -	REVISED -
P:\10E2166-10\60-2HB-2 76G10 FAI 55\CADD	Sheets\0876G10-sht-detour-plans.dgn	DRAWN - SWD	REVISED -
Default	PLOT SCALE = 20.0000' / in.	CHECKED -	REVISED -
	PLOT DATE = 7/10/2014	DATE - 6/30/14	REVISED -

STATE OF ILLINOIS
DEPARTMENT OF TRANSPORTATION

DETOUR PLANS
FAI 55

SCALE: NTS SHEET 1 OF 1 SHEETS STA. TO STA.

F.A.I. RTE.	SECTION	COUNTY	TOTAL SHEETS	SHEET NO.
55	60-2HB-2	MADISON	52	15
CONTRACT NO. 76G10				
ILLINOIS FED. AID PROJECT				