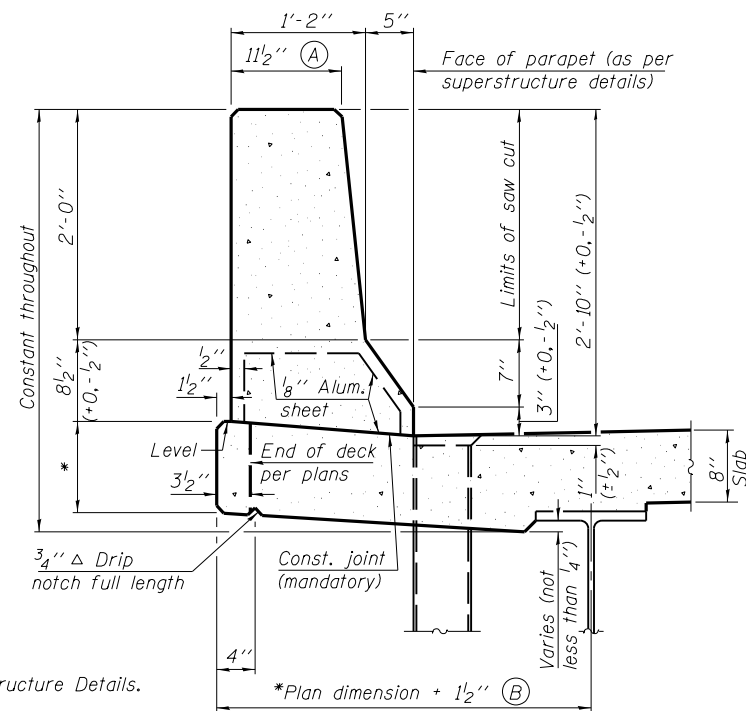


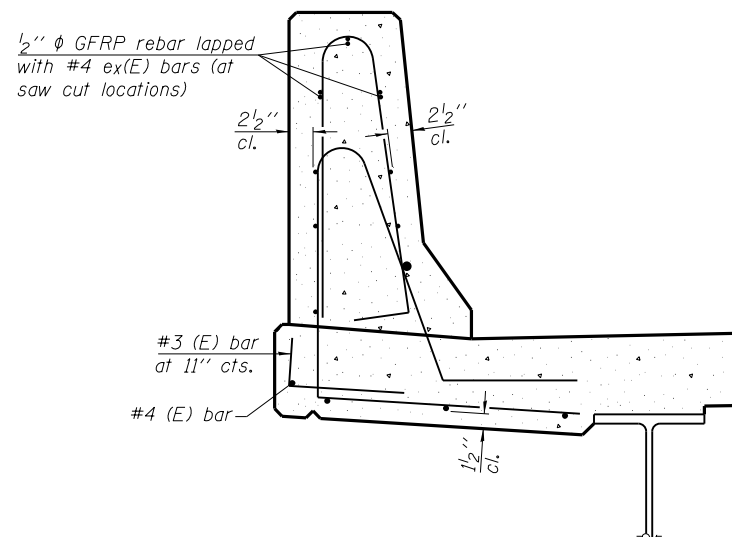
**GENERAL NOTES**

All dimensions shall remain the same as shown on superstructure details, except dimensions A and B which are to be revised as shown to provide additional clearance. Additional concrete needed to revise dimension A and B = 0.0165 cu. yds./ft. for 34" parapet or = 0.0223 cu. yds./ft. for 42" parapet. Place aluminum sheet in curb portion at and near piers. Full thickness saw cut at all joint locations in lieu of cork joint filler. Steel superstructure shown. Other superstructure types similar.



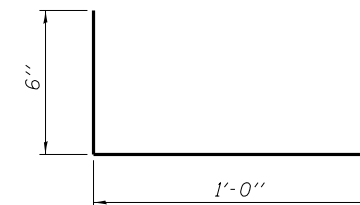
**34" F SHAPE PARAPET SECTION**  
(Showing dimensions)

\*See Superstructure Details.

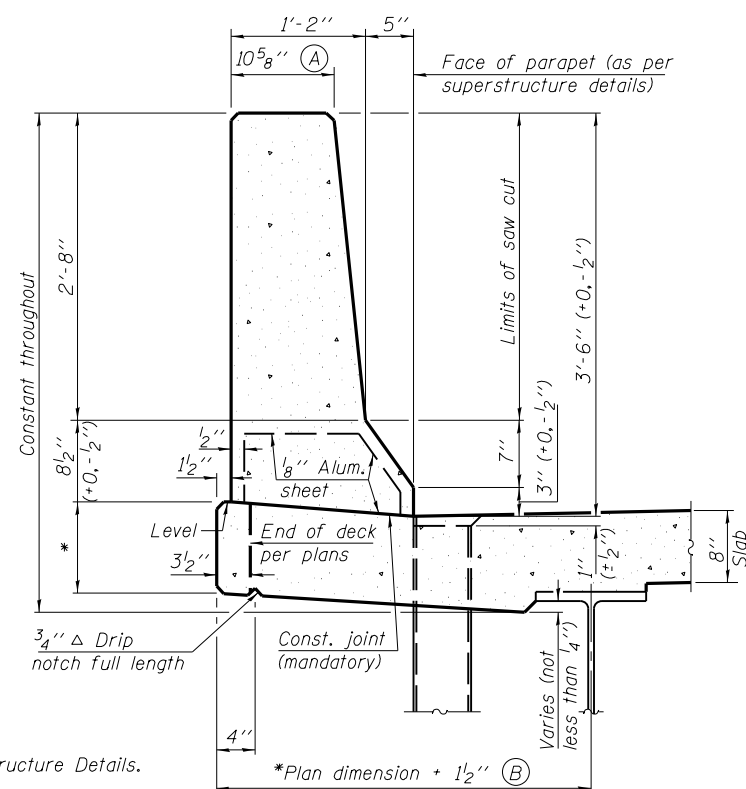


**SECTION**

(34" parapet shown - 42" parapet similar)  
(Showing reinforcement clearances for slip forming and additional reinforcement bars)

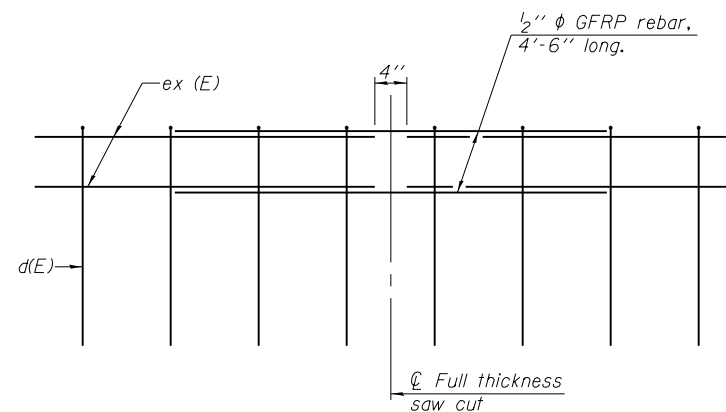


**#3 (E) BAR**



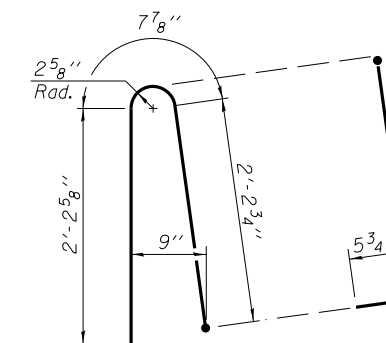
**42" F SHAPE PARAPET SECTION**  
(Showing dimensions)

\*See Superstructure Details.

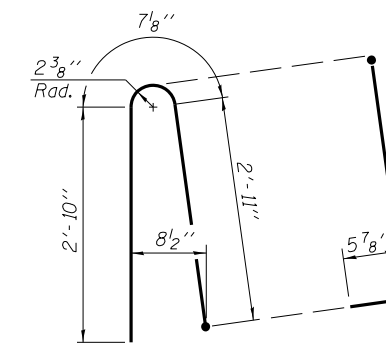


**GFRP REBAR STIFFENING DETAIL**

(Place as shown in parapet section at each parapet joint location.)



**ALTERNATE BAR d(E)**  
(For 34" parapet when conduit is present)



**ALTERNATE BAR d(E)**  
(For 42" parapet when conduit is present)

SFP 34-42  
BENTON & ASSOCIATES, INC.  
QUIGG ENGINEERING INC

8-16-12

FILE NAME	USER NAME =	DESIGNED - MBH	REVISED -
0600104-76G10-014-Parapets.dgn		CHECKED - DRB	REVISED -
	PLOT SCALE =	DRAWN - MBH	REVISED -
	PLOT DATE =	CHECKED - RHB	REVISED -

STATE OF ILLINOIS  
DEPARTMENT OF TRANSPORTATION

CONCRETE PARAPET SLIPFORMING OPTION  
STRUCTURE NO. 060-0104

SHEET NO. 14 OF 29 SHEETS

F.A.I. RTE.	SECTION	COUNTY	TOTAL SHEETS	SHEET NO.
55	60-2HB-2	MADISON	52	32
CONTRACT NO. 76G10				
FED. ROAD DIST. NO. 8 ILLINOIS FED. AID PROJECT				