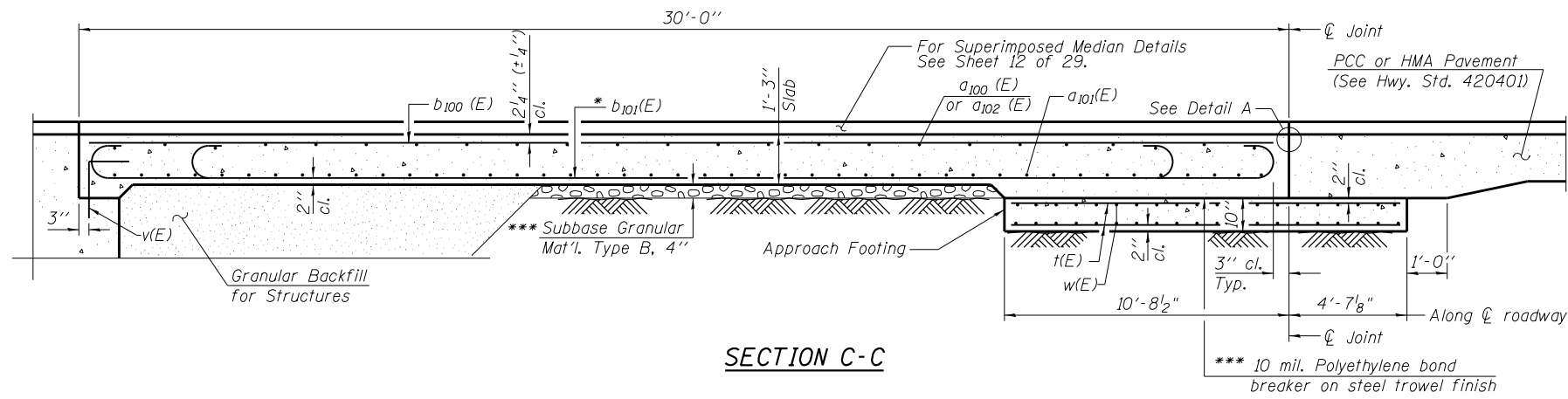
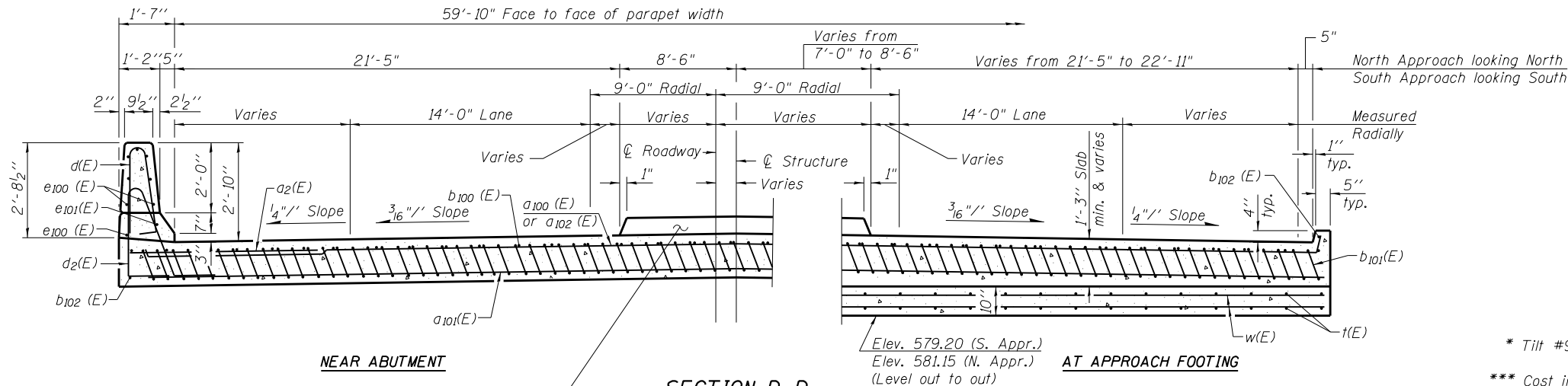


Notes:  
 See sheet 16 of 29 for Detail A and View B-B.  
 Approach slab and parapet concrete shall be paid for as Concrete Superstructure.  
 Approach footing concrete shall be paid for as Concrete Structures.  
 Reinforcement shall be paid for as Reinforcement Bars, Epoxy Coated.  
 For v(E) bar details, see sheet 22 & 23 of 29.  
 The approach footing maximum applied service bearing pressure (Qmax) = 2.0 ksf.  
 Cost of excavation for approach footing included with Concrete Structures.  
 For Granular Backfill for Structures and drainage treatment details, see sheet 21 of 29.  
 For additional parapet details, see sheet 11 of 29.



SECTION C-C



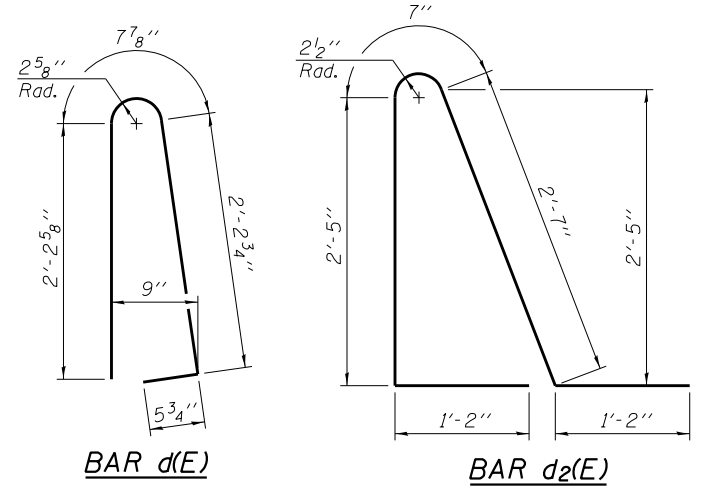
NEAR ABUTMENT

SECTION D-D

AT APPROACH FOOTING

For Median Details and rebar See Sheet 12 of 29 Sheets.

(See Plan for dimensions not shown)



BAR d(E)

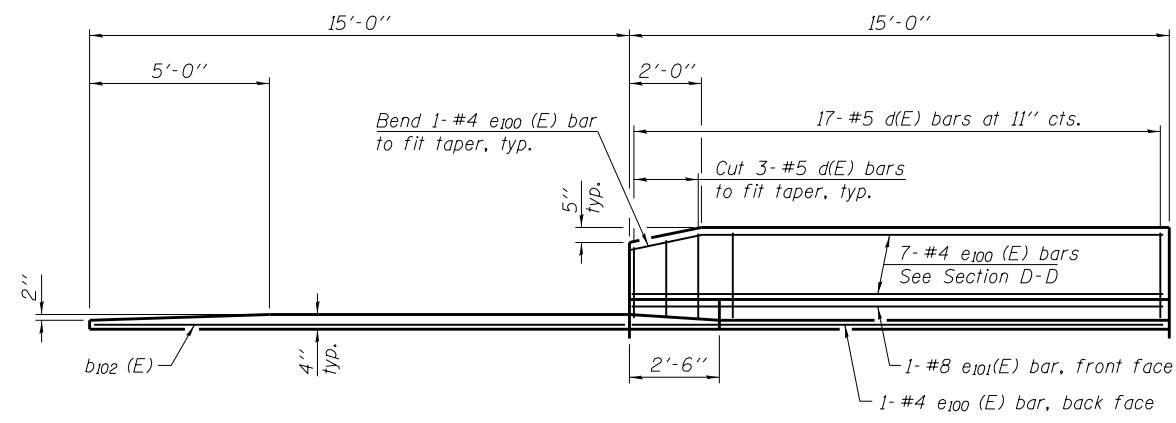
BAR d2(E)

\* Tilt #9 b101(E) bars as required to maintain clearance.

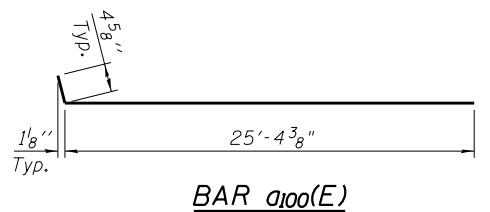
\*\*\* Cost included with Concrete Superstructure.

TWO APPROACHES  
 BILL OF MATERIAL

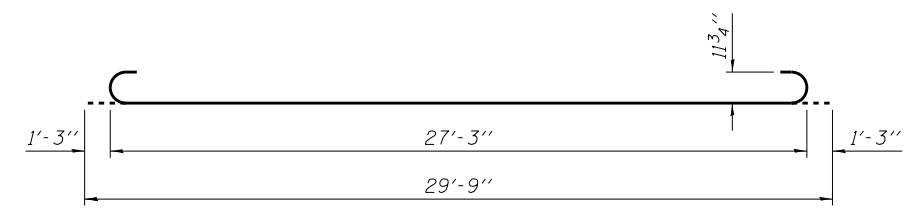
Bar	No.	Size	Length	Shape
a2(E)	48	#6	6'-6"	—
a100(E)	100	#4	25'-9"	—
a101(E)	368	#5	25'-6"	—
a102(E)	100	#4	25'-3"	—
b3(E)	30	#5	34'-2"	—
b4(E)	2	#5	34'-2"	—
b100(E)	98	#4	29'-8"	—
b101(E)	296	#9	29'-9"	—
b102(E)	8	#4	14'-8"	—
c2(E)	124	#5	1'-4"	┌
c3(E)	31	#5	48'-9"	—
d(E)	68	#5	5'-7"	┌
d2(E)	68	#5	7'-11"	┌
e100(E)	32	#4	14'-8"	—
e101(E)	4	#8	14'-8"	—
t(E)	248	#4	15'-0"	—
w(E)	320	#5	25'-6"	—
Concrete Superstructure			Cu. Yd.	217.3
Concrete Structures			Cu. Yd.	58.3
Reinforcement Bars, Epoxy Coated			Pound	60,940
Type G, Inlet Box Standard 610001			Each	2



VIEW E-E



BAR a100(E)



BAR b101(E)

(Sheet 2 of 2)

BA-R  
 BENTON & ASSOCIATES, INC.  
 QUIGG ENGINEERING, INC.

12-12-12

FILE NAME	USER NAME	DESIGNED - DRB	REVISED
0600104-76G10-017-ApproachSlabDetails02.dgn		CHECKED - MBH	REVISED
		DRAWN - KC	REVISED
		CHECKED - JK	REVISED

STATE OF ILLINOIS  
 DEPARTMENT OF TRANSPORTATION

BRIDGE APPROACH SLAB DETAILS  
 STRUCTURE NO. 060-0104

SHEET NO. 17 OF 29 SHEETS

F.A.I. RTE.	SECTION	COUNTY	TOTAL SHEETS	SHEET NO.
55	60-2HB-2	MADISON	52	35
CONTRACT NO. 76G10				
ILLINOIS FED. AID PROJECT				