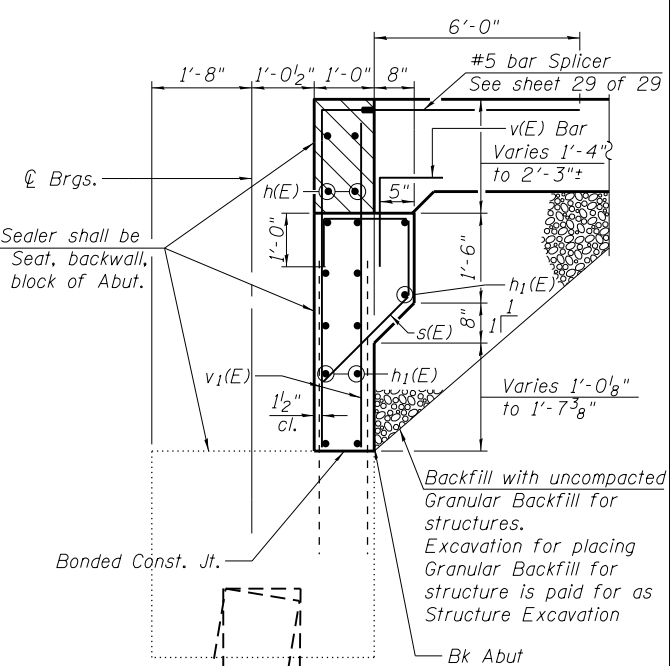


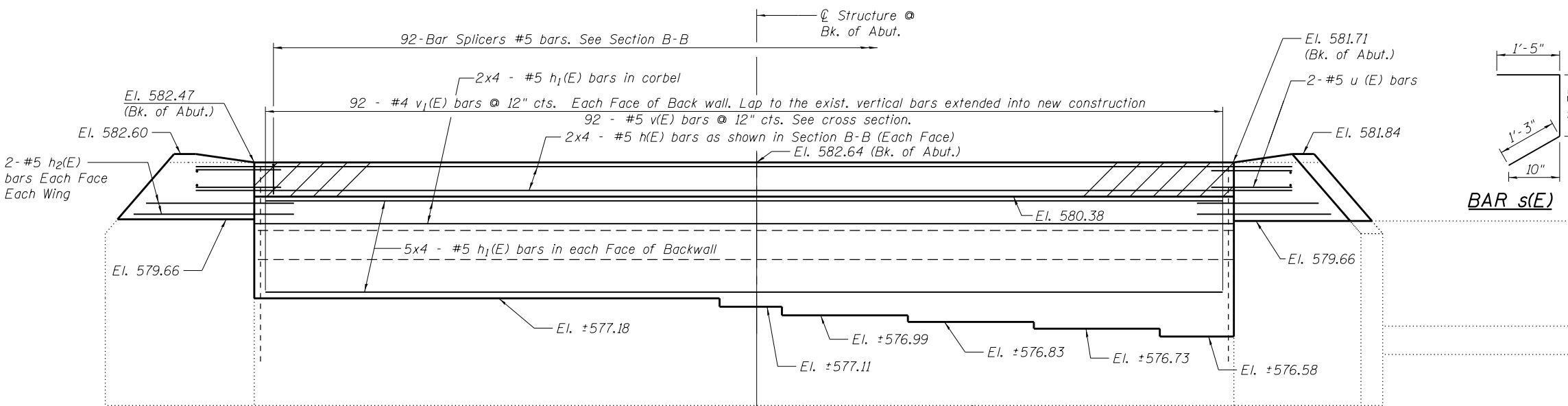
**PLAN**



**MIN BAR LAPS**

#5 bars = 2'-7"

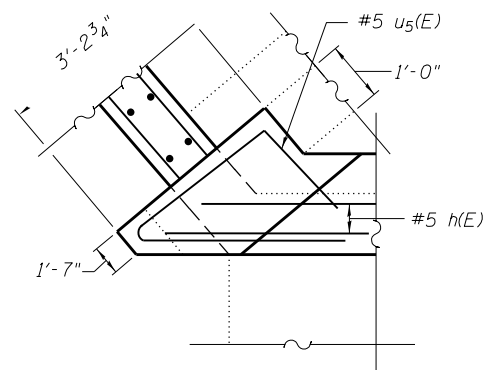
**SECTION B-B**



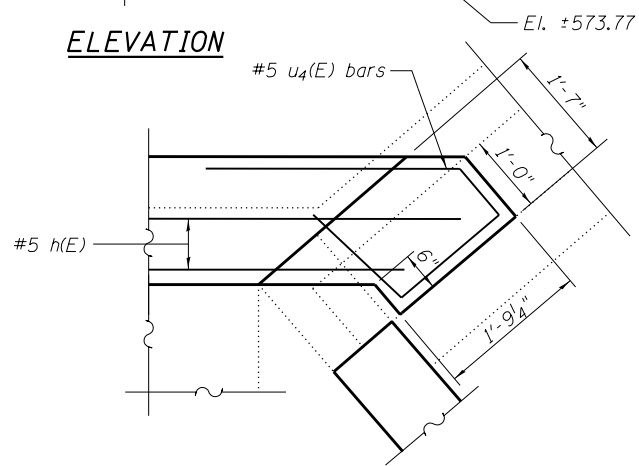
**ELEVATION**

**BAR v(E)**

**BAR s(E)**



**DETAIL A**



**DETAIL B**

Notes:  
 For Concrete Removal and Structure Repair details see sheet 21 of 29.  
 Bars indicated thus 3x4 - #5 etc. indicates 3 lines of bars with 4 lengths per line.  
 Hatched area to be poured after Superstructure forms are removed. Quantity of Concrete included with Concrete Superstructures.  
 Rebar bending diagrams u4(E), u5(E), h2(E) and Wing Wall reinforcement details see sheet 22 of 29.

**BILL OF MATERIAL**

Bar	No.	Size	Length	Shape
h(E)	16	#5	25'-0"	—
h1(E)	48	#5	25'-9"	—
h2(E)	8	#5	6'-0"	↘
s(E)	92	#5	3'-11"	⌋
u4(E)	2	#5	7'-6"	⌋
u5(E)	2	#5	9'-11"	⌋
v(E)	92	#5	3'-9"	⌋
v1(E)	184	#4	5'-0"	—
Concrete Structure		Cu. Yds.	17.1	
Reinforcement bars, Epoxy Coated		Pounds	3150	
Structure Excavation		Cu. Yds.	35	
Concrete Sealer		Sq. Ft.	767	
Granular Backfill for Structures		Cu. Yds.	35	

**BENTON & ASSOCIATES, INC.**  
**QUIGG ENGINEERING, INC.**