

F.A.P. RTE.	SECTION	COUNTY	TOTAL SHEETS	SHEET NO.
805	3RS-1,5,7-1RS-3	CLINTON	26	1
		ILLINOIS	CONTRACT NO. 76G31	

STATE OF ILLINOIS
DEPARTMENT OF TRANSPORTATION
DIVISION OF HIGHWAYS

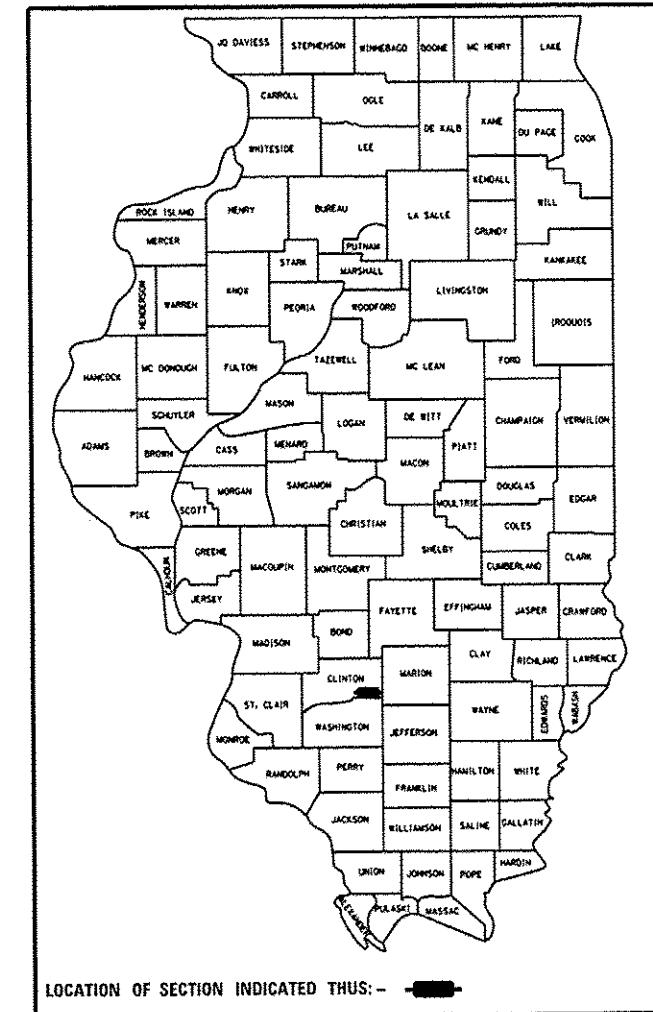
PROPOSED HIGHWAY PLANS

FAP ROUTE 805 (IL 161)
SECTION 3RS-1, (5,7-1)RS-3
PROJECT: ACF-0805(077)
RESURFACING
CLINTON COUNTY

C-98-033-13

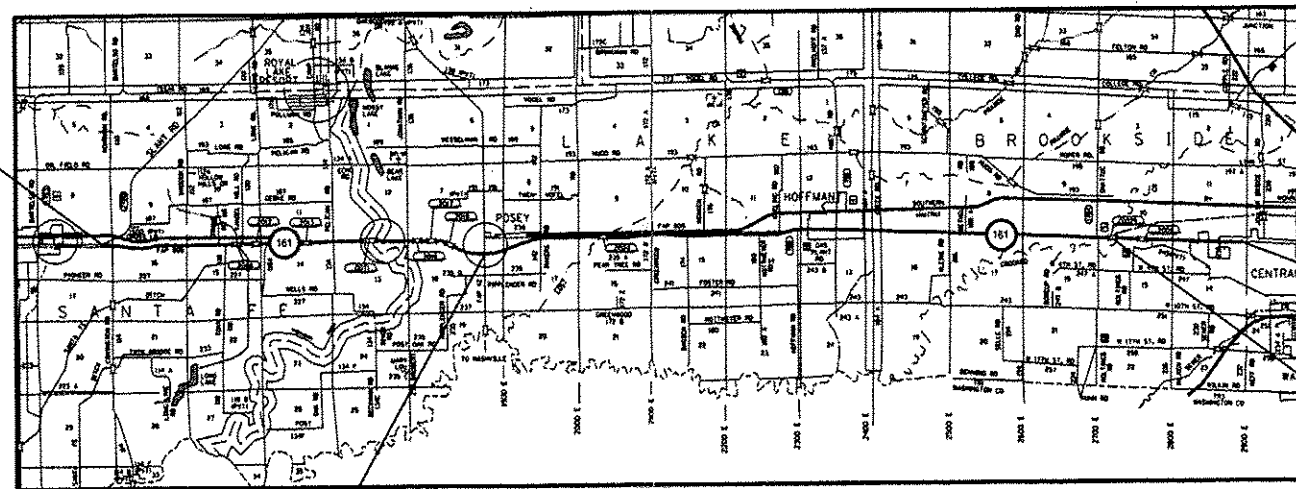
FOR INDEX OF SHEETS, SEE SHEET NO. 2

D-98-030-13



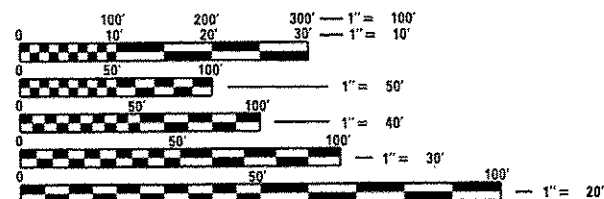
ADT	2013	2034	SU	MU
BEG. PROJ. TO IL 127	2000	2500	3.5%	4.5%
IL 127 TO HUEY RD.	4050	5000	4.7%	4.6%
HUEY RD. TO SHATTUC RD.	4450	5500	4.5%	3.6%
SHATTUC RD. TO END PROJ.	8000	9900	4.6%	2.7%

BEGIN PROJECT: M.P. 0.00
LAT: +38.53621
LONG: -89.44662



END PROJECT: M.P. 15.57
LAT: +38.53524
LONG: -89.16188

BRIDGE OMISSION
S.N. 014-0025
M.P. 13.80 TO 13.92



FULL SIZE PLANS HAVE BEEN PREPARED USING STANDARD ENGINEERING SCALES. REDUCED SIZED PLANS WILL NOT CONFORM TO STANDARD SCALES. IN MAKING MEASUREMENTS ON REDUCED PLANS, THE ABOVE SCALES MAY BE USED.

J.U.L.I.E.
JOINT UTILITY LOCATION INFORMATION FOR EXCAVATION
1-800-892-0123
OR 811

OMISSION (IL 127)
M.P. 5.16 TO 5.19

NOT TO SCALE

PROJECT ENGINEER: PATTI LEBEAU (618) 346-3179
PROJECT MANAGER: REBECCA THARP (618) 346-3323

GROSS LENGTH = 82,210 FT. = 15.57 MILE
NET LENGTH = 81,431 FT. = 15.42 MILE

DESIGN DESIGNATION
NA

CONTRACT NO. 76G31

STATE OF ILLINOIS
DEPARTMENT OF TRANSPORTATION
DIVISION OF HIGHWAYS

SUBMITTED *May 14 2014*
Jeffrey L. Keane
DEPUTY DIRECTOR OF HIGHWAYS, REGION 5 ENGINEER

Aug 15 2014
John D. Baranzelli, P.E.
ENGINEER OF DESIGN AND ENVIRONMENT

Aug 15 2014
Omer Osman, P.E.
DIRECTOR OF HIGHWAYS, CHIEF ENGINEER

PRINTED BY THE AUTHORITY
OF THE STATE OF ILLINOIS