

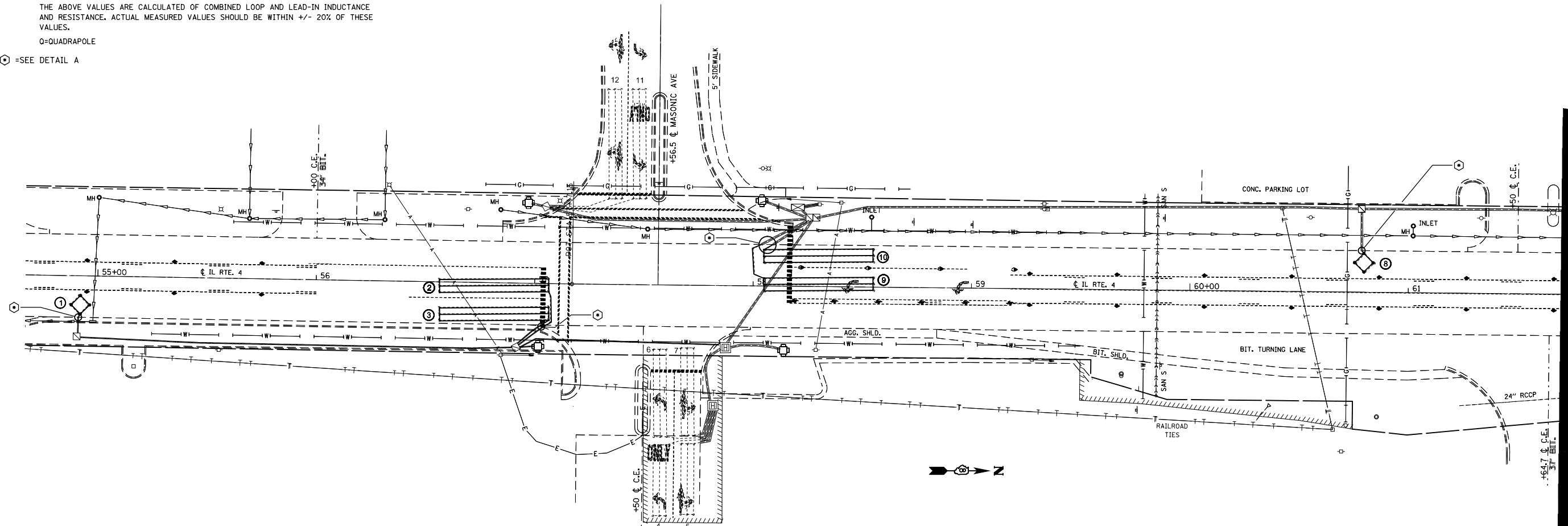
DETECTOR LOOP REQUIREMENTS AND CALCULATIONS
FOR IL 004 & MASONIC AVE.

LOOP#	PHASE #	LOOP SIZE (FT. X FT.)	REQUIRED # OF TURNS	CALCULATED INDUCTANCE MICROHENRIES	CALCULATED RESISTANCE OHMS
1. NB CCO	2	6 X 6	6	344.4	2.4
2. NB LT CD	5	6 X 50-Q	3-6-3	836.9	2.7
3. NB THRU CD	2	6 X 50-Q	3-6-3	832.6	2.7
4. WB LT CD A	4	6 X 40-Q	3-6-3	671.4	2.1
5. WB LT CD B	4	6 X 40-Q	3-6-3	669.0	2.0
6. WB THRU CD A	4	6 X 40-Q	3-6-3	671.0	2.1
7. WB THRU CD B	4	6 X 40-Q	3-6-3	667.5	2.0
8. SB CCO	6	6 X 6	6	319.8	1.8
9. SB LT CD	1	6 X 50-Q	3-6-3	800.3	1.9
10. SB THRU CD	6	6 X 50-Q	3-6-3	796.1	1.8
11. EB LT CD	3	6 X 50-Q	3-6-3	826.7	2.5
12. EB THRU CD	3	6 X 50-Q	3-6-3	824.3	2.5

THE ABOVE VALUES ARE CALCULATED OF COMBINED LOOP AND LEAD-IN INDUCTANCE AND RESISTANCE. ACTUAL MEASURED VALUES SHOULD BE WITHIN +/- 20% OF THESE VALUES.

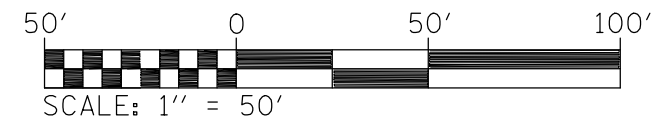
Q=QUADRAPOLE

⊙ =SEE DETAIL A



IL 004 & MASONIC AVE.

MATCHLINE STA. 61+75



FILE NAME =	USER NAME = burnsideem	DESIGNED -	REVISED -	STATE OF ILLINOIS DEPARTMENT OF TRANSPORTATION	DETECTOR LOOP REPLACEMENT PLAN 1 OF 2			F.A.P. RTE.	SECTION	COUNTY	TOTAL SHEETS	SHEET NO.
et:\pw_work\p1dot\burnsideem\d0378703\0876997-sht-tsp1an.dgn		DRAWN -	REVISED -		682	21-IRS-4	RANDOLPH	24	15			
	PLOT SCALE = 50.0000' / in.	CHECKED -	REVISED -		CONTRACT NO. 76C97							
	PLOT DATE = 7/11/2014	DATE -	REVISED -		SCALE:	SHEET NO. _ OF _ SHEETS	STA.	TO STA.	ILLINOIS FED. AID PROJECT			