

F.A. SITE	SECTION	COUNTY	TOTAL SHEETS	SHEET NO.
	12-00004-00-SW	TAZEWELL	15	1
STA.		TO STA.		
FED. ROAD DIST. NO.		LANDS	FED. RD. PROJECT	

09-19-14 LETTING ITEM 081

CONSTRUCTION PLANS VILLAGE OF DEER CREEK SAFE ROUTES TO SCHOOLS SECTION 12-00004-00-SW C-94-001-14 PROJECT: SRTS-4009(264)

A PART OF SECTION 16, T.25N, R.2W, 3 P.M.,
VILLAGE OF DEER CREEK, TAZEWELL COUNTY, ILLINOIS

IDOT STANDARDS

- 280001-07 TEMPORARY EROSION CONTROL SYSTEMS
- 424001-07 PERPENDICULAR CURB RAMPS FOR SIDEWALKS
- 542401-01 METAL END SECTION FOR PIPE CULVERTS
- 602301-04 INLET, TYPE A
- 602306-03 INLET, TYPE B
- 604001-03 FRAME AND LIDS, TYPE 1
- 604036-02 GRATE, TYPE B
- 701001-02 OFF-ROAD OPERATIONS, 2L, 2W, MORE THAN 4.5 M (15') AWAY
- 701006-05 OFF-ROAD OPERATIONS, 2L, 2W, 4.5 M (15') TO 600 MM (24") FROM PAVEMENT EDGE
- 701901-03 TRAFFIC CONTROL DEVICES
- 780001-04 TYPICAL PAVEMENT MARKINGS
- BLR22-7 TYP. APPL. OF T.C.D. FOR RURAL LOC. HWYS. (2-LANE 2 WAY RURAL TRAFF.) (RD. CLOSED TO THRU TRAFF.)

INDEX OF SHEETS

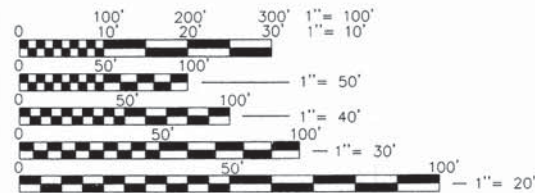
- COVER 1
- SCHEDULES 2
- TYPICAL SECTIONS 3
- PLAN SHEETS 4-9
- CROSS SECTIONS 10-14
- DETAILS 15

BENCHMARKS

- 755.89 TOP OF FIRE HYDRANT AT S.E. CORNER OF 1ST AND MASON STREETS
- 765.28 TOP OF FIRE HYDRANT AT S.E. CORNER OF BRADBURY AND PARK
- 750.47 SPINDLE IN 1ST POWER POLE WEST OF PERRY ST. ON EAST SIDE OF MCKINLEY STREET.

UTILITY CONTACTS

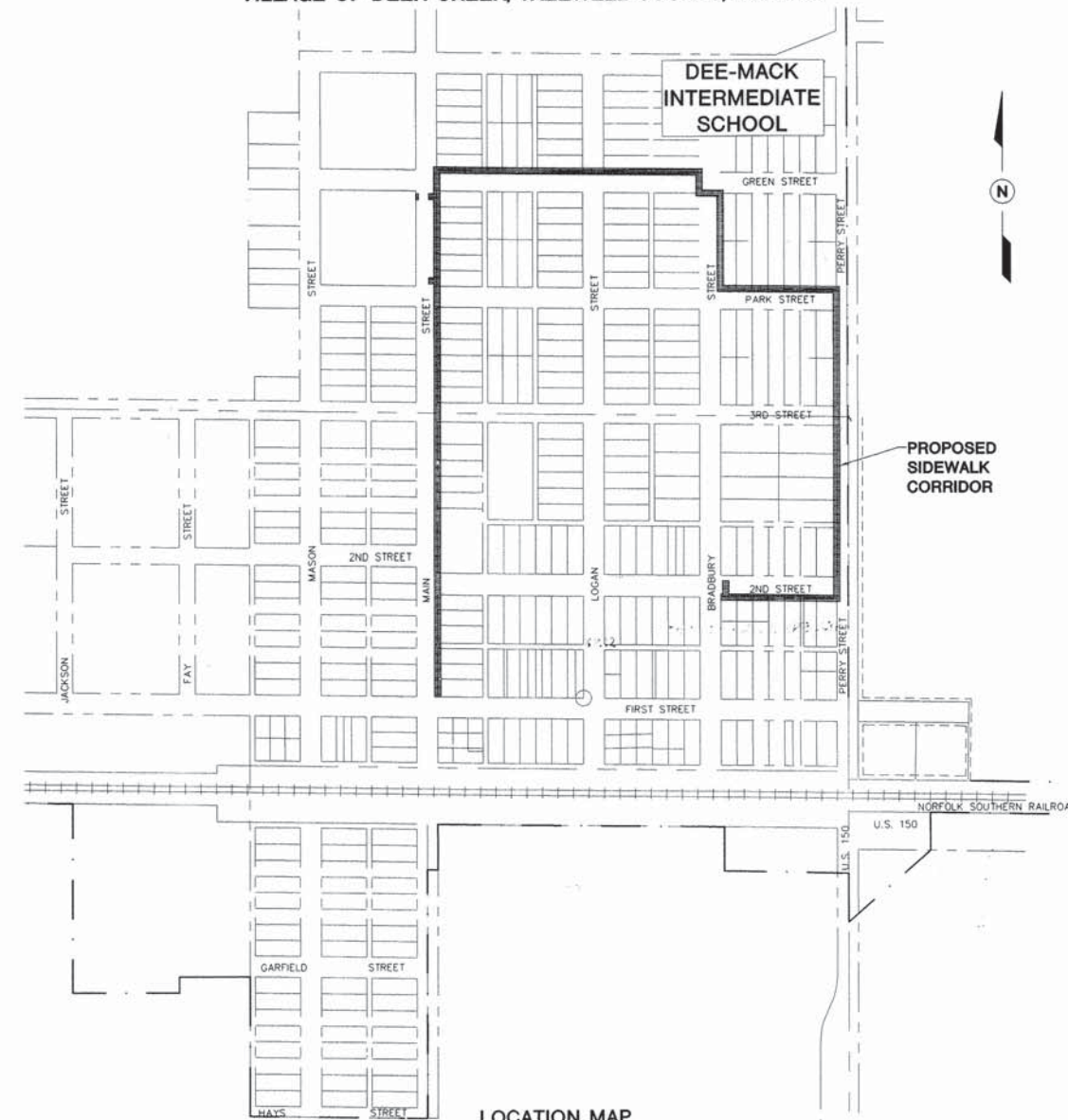
- VILLAGE OF DEER CREEK (WATER) 309-447-6749
- NICOR GAS 888-642-6748
- AMERENILCO (ELECTRIC) 888-672-5252
- VERIZON (TELEPHONE) 800-483-4600
- FRONTIER COMMUNICATIONS (TELEPHONE) 888-772-3501
- MEDIACOM (CABLE, INTERNET, PHONE) 800-443-1175
- MTCO (INTERNET) 800-859-6826
- NOIZE COMMUNICATIONS (INTERNET) 309.670.1000



FULL SIZE PLANS HAVE BEEN PREPARED USING STANDARD ENGINEERING SCALES, REDUCED SIZED PLANS WILL NOT CONFORM TO STANDARD SCALES, IN MAKING MEASUREMENTS ON REDUCED PLANS, THE ABOVE SCALES MAY BE USED.

CALL JULIE BEFORE YOU DIG: 1-800-892-0123

THE CONTRACTOR(S) SHALL CONTACT ALL UTILITY COMPANIES, INCLUDING THE OWNER, FOR THE LOCATIONS OF UNDERGROUND UTILITIES PRIOR TO BEGINNING CONSTRUCTION ACTIVITIES. THE LOCATIONS OF EXISTING UTILITIES SHOWN ON THE PLAN MAY BE INCOMPLETE AND ARE APPROXIMATE ONLY. THE CONTRACTOR(S) SHALL BE RESPONSIBLE FOR KEEPING EXISTING UTILITIES IN SERVICE AND PROMPTLY REPAIRING ANY WHICH ARE DAMAGED DURING CONSTRUCTION AT NO COST TO THE OWNER.



LOCATION MAP
NOT TO SCALE
LENGTH OF IMPROVEMENT = 3,051 feet (0.58 miles)



APPROVED April 15, 2014
James E. Hackney
 JAMES E. HACKNEY VILLAGE PRESIDENT
 VILLAGE OF DEER CREEK

PASSED May 23, 2014
Tony Lassina, MEP
 TONY LASSINA, MEP DISTRICT ENGINEER OF LOCAL ROADS AND STREETS

RELEASED FOR BID BASED UPON LIMITED REVIEW May 27, 2014
Randa A. Dames
 RANDA A. DAMES DEPUTY DIRECTOR OF HIGHWAYS
 REGION 3 ENGINEER

STATE OF ILLINOIS DEPARTMENT OF TRANSPORTATION

Edward F. Duran 4/14/14
 EDUARD F. DURAN ILLINOIS LICENSE #49772 LICENSE EXPIRES 11/30/2015 DATE

Lewis, Yockey & Brown, Inc.
 Consulting Engineers & Land Surveyors
 Professional Design Firm Registration #184.000806
 505 North Main Street 222 East Center Street 155 South Elm Street
 •Bloomington, Illinois •LeRoy, Illinois •El Paso, Illinois
 Ph. (309) 829-2552 Ph. (309) 962-8151 Ph. (309) 527-2552

Rev.	Bk.	77B
	Dir.	MB
	Des.	EFD
	App.	LDY

VILLAGE OF DEER CREEK
 SAFE ROUTES TO SCHOOLS
 COVER SHEET

Sheet
1
of 15

4008.70

F. A. No.	SECTION	COUNTY	TOTAL SHEETS	SHEET NO.
	12-00004-00-SW	TAZEWELL	15	2
STA.		TO STA.		
FED. ROAD DIST. NO.		ILLINOIS	FED. AID PROJECT	

SIDEWALK SCHEDULE

Street	Station	to	Sta	Side	Offset	Width	Sidewalk Removal	4" PCC Sidewalk	6" PCC Sidewalk	Detectable Warnings
Main	99+68	to	99+73	Rt	32.5	4				0
Main	100+30	to	Stub	Lt	32.5	4	20			8
Main	100+32	to	Stub	Rt	32.5	4				12
Main	101+36	to	101+72	Rt	32.5	5		180		
Main	101+72	to	101+96	Rt	32.5	5			120	
Main	103+55	to	103+61	Rt	32.5	4				8
Main	103+92	to	103+98	Rt	32.5	4				8
Main	108+98	to	109+04	Rt	32.5	4				8
Main	109+26	to	109+32	Rt	32.5	4				8
Main	112+66	to	113+72	Rt	32.5	4				8
Main	112+93	to	112+99	Rt	32.5	4				8
Main	113+10	to	Stub	Lt	7	5		105		10
Main	113+11	to	Stub	Rt	12	4				8
Main	114+81	to	114+86	Rt	27.5	5	20	25		
Main	114+92	to	114+96	Rt	27.5	5		25		
Main	115+97	to	116+19	Lt	32.5	5		95		
Main	116+17	to	Stub	Lt	7	5		105		10
Main	116+17	to	Stub	Rt	10	5		85		10
Main	116+34	to	116+40	Rt	32.5	4				8
Main	116+58	to	116+64	Rt	32.5	4				8
Green	200+31	to	201+36	Lt	32.5	5		525		
Green	201+36	to	201+57	Lt	32.5	5			105	
Green	201+57	to	202+40	Lt	32.5	5		415		
Green	202+40	to	202+53	Lt	32.5	5			65	
Green	202+53	to	203+32	Lt	32.5	5	10	395		
Green	203+32	to	203+50	Lt	32.5	5			90	
Green	203+50	to	204+50	Lt	32.5	5		500		
Green	204+50	to	204+64	Lt	32.5	5			70	
Green	204+64	to	205+13	Lt	32.5	5		245		10
Green	204+93	to	Stub	Rt						8
Green	204+93	to	Stub	Lt	9	5		92.5		10
Green	205+52	to	Stub	Lt	9	4				8
Green	205+52	to	Stub	Rt						8
Green	205+34	to	206+24	Lt	32.5	5		450		10
Green	206+24	to	206+41	Lt	32.5	5			85	
Green	206+41	to	206+60	Lt	32.5	5		95		
Green	206+60	to	206+82	Lt	32.5	5			110	
Green	206+82	to	208+27	Lt	32.5	5		725		
Green	208+27	to	Stub	Lt	9	5		92.5		10
Green	208+27	to	Stub	Rt	9	5		75		10
Green	208+22	to	208+44	Rt	30	5		110		
Green	208+44	to	208+57	Rt	30	5			65	
Green	208+57	to	209+20	Rt	30	5		315		
Bradbury	300+29	to	303+40	Lt	30	5		1555		
Park	400+24	to	404+02	Lt	32.5	5		1890		
Park	403+98	to	Stub	Lt	12	5		75		10
Perry	500+06	to	500+93	Rt	30	5		435		10
Perry	500+93	to	501+10	Rt	30	5			85	
Perry	501+10	to	503+50	Rt	30	5		1200		10
Perry	502+70	to	Stub	Rt	32.5	5		15		
Perry	503+78	to	504+81	Rt	30	5		515		10
Perry	505+51	to	506+04	Rt	30	5		445		
Perry	506+04	to	506+16	Rt	30	5			60	
Perry	506+16	to	506+76	Rt	30	5		300		
Perry	506+76	to	507+00	Rt	30	5			120	
Perry	507+00	to	507+26	Rt	30	5		130		
Perry	507+26	to	507+46	Rt	30	5			100	
Perry	507+46	to	507+78	Rt	30	5		160		
Perry	507+78	to	508+03	Rt	30	5			125	
Perry	508+03	to	508+77	Rt	30	5		370		10
Perry	509+10	to	509+29	Rt	30	5		95		10
Second	600+31	to	600+93	Lt	32.5	5		310		
Second	600+93	to	601+22	Lt	32.5	5	116		145	
Second	601+22	to	601+45	Lt	32.5	5	92	115		
Second	601+45	to	601+58	Lt	32.5	5	52		65	
Second	601+58	to	601+82	Lt	32.5	5	96	120		
Second	601+82	to	601+93	Lt	32.5	5	44		55	
Second	601+93	to	602+37	Lt	32.5	5	176	220		
Second	602+37	to	602+47	Lt	32.5	5	40		50	
Second	602+47	to	602+88	Lt	32.5	5	164	205		
Second	602+88	to	603+11	Lt	32.5	5	92		115	
Second	603+11	to	604+19	Lt	32.5	5	432	540		10
Second	603+94	to	Stub	Lt	10	5	72	90		10
Second	603+93	to	Stub	R	9	5	76	95		10
Second	604+42	to	604+61	Lt	32.5	5		95		10
							Sq Ft	Sq Ft	Sq Ft	Sq Ft
							1502	13630	1630	296

TREE REMOVAL SCHEDULE

Street	Station	Side	Offset	6-15 Unit Diameter	Over 15 Unit Diameter*	Incidental Shrubs
Green	202+50	Lt	32			
Green	202+67	Lt	32		40	
Green	205+10	Lt	29	10		
Green	205+81	Lt	33			5
Perry	502+29	Rt	34		20	
Perry	503+06	Rt	30			Bush
Perry	503+16	Rt	30			Bush
Perry	503+22	Rt	31			Bush
Perry	507+55	Rt	25			Shrubs
Perry	508+33	Rt	23		30	
Total				10	90	Incidental

DRIVEWAY SCHEDULE

Street	Station	to	Driveway Pavement Removal	Aggregate Surface Course Ty B	Portland Cement Concrete Driveway Pavement 6"	Pavement Removal and Replacement
Main	101+83	Rt		0.9*		
Green	201+45	Lt		0.8*		
Green	202+45	Lt		0.4*		
Green	203+40	Lt		0.4*		
Green	204+60	Lt		0.4*		
Green	206+30	Lt		0.6*		
Green	206+76	Lt		0.7*		
Green	208+51	Rt	56			
Perry	506+10	Rt		2.5*		23
Perry	506+26	Cr				
Perry	506+85	Rt	337		217	
Perry	507+38	Rt	388		280	
Perry	507+93	Rt	803	10		
2nd	601+10	Lt		0.9*		
2nd	601+52	Lt		0.4*		
2nd	601+85	Lt		0.3*		
2nd	602+40	Lt		0.3*		
2nd	603+01	Lt				
			1584	18.6	497	23
			Sq Ft	Tons	Sq Ft	Sq Yd
* Aggregate Surface Used For Top Dressing of Driveways as Needed						

DRAINAGE SCHEDULE

Street	Station	to	Station	Side	Offset	Pipe Culvert Removal	Pipe Culvert C I C, Ty 1, 12"	Pipe Culvert C I C, Ty 1, 15"	12" Metal End Section	15" Metal End Section	Inlet to be Reconstructed	Inlet Type B w/Ty 8 Grate	Inlet Type A W/Ty 1 F Open Lid	
Main	113+04	to	113+14	Lt	22 to 13			14		2				
Main	116+11	to	116+31	Lt				14		1				
Main	116+10	to	116+24	Rt				21		1				
Main	116+31	to		Lt				14		1		1		
Green	204+50	to	204+72	Lt	17.5	22		22		2				
Green	207+14	to	207+22	Lt	32 to 20			15						
Green	208+16	to	208+27	Lt				18		1				
Green	208+16	to	208+41	Rt				16		2				
Park	403+94	to	404+08	Lt	20 to 25			16		1				
Perry	500+12	to	500+14	Rt	37 to 23			15		1				
Perry	500+17	to	500+39	Rt				19		1				
Perry	503+33	to	503+42	Rt	20 to 35			20		2				
Perry	506+02	to	506+25	Rt		18	20				2			
Perry	506+25	to		Cross	18 to 18		32				2			
Perry	506+71	to	507+10	Rt		16	17	40		1				
Perry	507+10	to	508+07	Rt		16	21	97		1			1	
Second	600+23	to	600+33	Lt	24 to 31			14		2				
Second	603+91	to	604+10	Lt	25 to 42			40		2			1	
Second	603+91	to	604+05	Rt	17 to 20			14		2				
Totals							112	401	54	23	4	1	2	1

VILLAGE OF DEER CREEK

SRTS SIDEWALK PROJECT

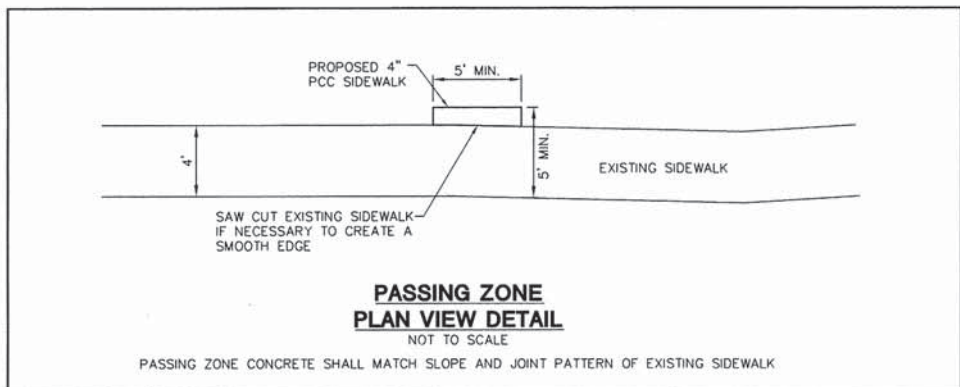
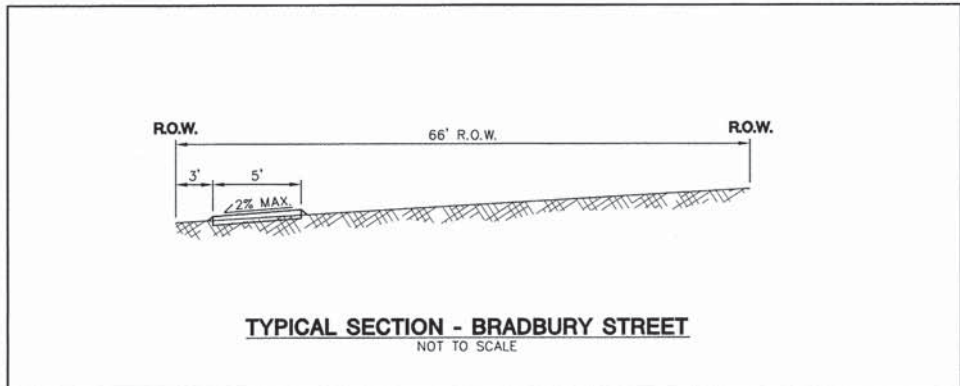
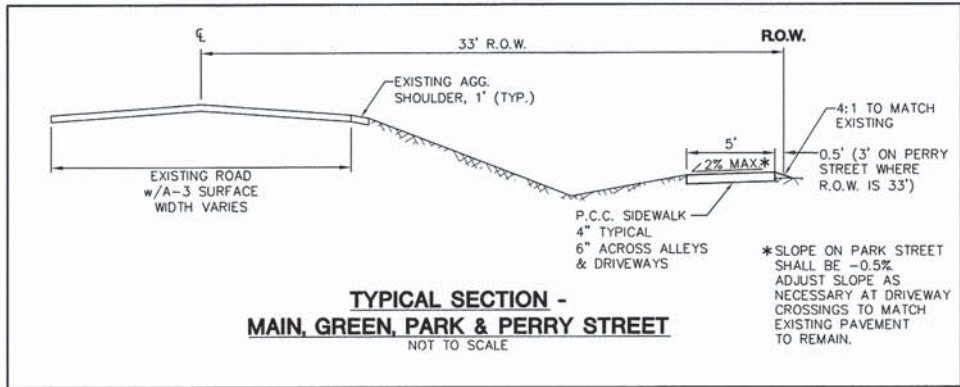
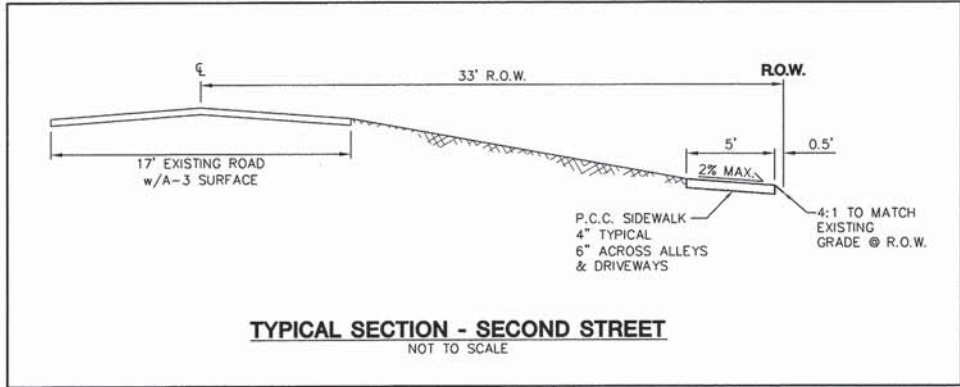
SUMMARY OF QUANTITIES

Section 12-00004-00-SW			
Code	Item	Unit	Quantity
20100110	TREE REMOVAL (6 TO 15 UNITS DIAMETER)	UNIT	10
20100210	TREE REMOVAL (OVER 15 UNITS DIAMETER)	UNIT	90
20200100	EARTH EXCAVATION	CU YD	497
25000100	SEEDING, CLASS 1	ACRE	0.7
25000400	NITROGEN FERTILIZER NUTRIENT	POUND	63
25000500	PHOSPHORUS FERTILIZER NUTRIENT	POUND	63
25000600	POTASSIUM FERTILIZER NUTRIENT	POUND	63
25100105	MULCH, METHOD 1	ACRE	0.7
28000500	INLET AND PIPE PROTECTION	EACH	5
40200800	AGGREGATE SURFACE COURSE, TYPE B	TON	19
42300200	PORTLAND CEMENT CONCRETE DRIVEWAY PAVEMENT, 6 INCH	SQ YD	497
42400100	PORTLAND CEMENT CONCRETE SIDEWALK 4 INCH	SQ FT	13630
42400300	PORTLAND CEMENT CONCRETE SIDEWALK 6 INCH	SQ FT	1630
42400800	DETECTABLE WARNINGS	SQ FT	296
44000200	DRIVEWAY PAVEMENT REMOVAL	SQ YD	176
44000600	SIDEWALK REMOVAL	SQ FT	1502
50105220	PIPE CULVERT REMOVAL	FOOT	112
542C0217	PIPE CULVERTS, CLASS C, TYPE 1 12"	FOOT	401
542C0220	PIPE CULVERTS, CLASS C, TYPE 1 15"	FOOT	54
54215547	METAL END SECTIONS 12"	EACH	23
54215550	METAL END SECTIONS 15"	EACH	4
56109210	WATER VALVES TO BE ADJUSTED	EACH	4
60234200	INLETS, TYPE A, TYPE 1 FRAME, OPEN LID	EACH	1
60240301	INLETS, TYPE B, TYPE 8 GRATE	EACH	2
60262700	INLETS TO BE RECONSTRUCTED	EACH	1
67100100	MOBILIZATION	LU SUM	1
72000100	SIGN PANEL - TYPE 1	SQ FT	18
73000100	WOOD SIGN SUPPORT	FOOT	24
78001130	PAINT PAVEMENT MARKING - LINE 6"	FOOT	746
X0300019	REMOVE AND REINSTALL PARKING BLOCKS	EACH	1
X0323378	CONCRETE PARKING BLOCKS	EACH	6
X7010216	TRAFFIC CONTROL AND PROTECTION	LU SUM	1
XX008675	PAVEMENT REMOVAL AND REPLACEMENT	SQ YD	23
XZ127962	RETAINING WALL SPECIAL	SQ FT	18

EROSION CONTROL AND MISCELLANEOUS SCHEDULE

Street	Station	to	Inlet and Pipe Protection	Water Valve to be Adjusted	Remove and Reinstall Parking Blocks	Concrete Parking Blocks	Retaining Wall, Special	Remove Landscape
--------	---------	----	---------------------------	----------------------------	-------------------------------------	-------------------------	-------------------------	------------------

F. A. SHE.	SECTION	COUNTY	TOTAL SHEETS	SHEET NO.
	12-00004-00-SW	TAZEWELL	15	3
STA. TO STA.		FED. ROAD DIST. NO. - LINDS. FED. AID PROJECT		



GENERAL NOTES

- ALL WORK SHALL BE IN ACCORDANCE WITH THE "STANDARD SPECIFICATIONS FOR ROAD AND BRIDGE CONSTRUCTION," ADOPTED JANUARY 1, 2012 BY THE ILLINOIS DEPARTMENT OF TRANSPORTATION, THE "SUPPLEMENTAL SPECIFICATIONS AND RECURRING SPECIAL PROVISIONS," LATEST EDITION (IDOT), THE "STANDARD SPECIFICATIONS FOR WATER AND SEWER CONSTRUCTION IN ILLINOIS," LATEST EDITION, THE "ILLINOIS MANUAL OF UNIFORM TRAFFIC CONTROL DEVICES FOR STREETS AND ROADWAYS" LATEST EDITION, AND VILLAGE OF DEER CREEK STANDARDS.
- ALL SEWER AND WATER MAIN SEPARATIONS SHALL BE IN ACCORDANCE WITH SECTION 41 OF THE "STANDARD SPECIFICATIONS FOR WATER AND SEWER CONSTRUCTION IN ILLINOIS," LATEST EDITION.
- THE EXISTING TOPOGRAPHIC INFORMATION IS BASED UPON SURVEYS MADE BY LEWIS, YOCKEY & BROWN, INC., 2013.
- THE CONTRACTOR SHALL CONTACT ALL UTILITY COMPANIES FOR THE LOCATIONS OF UNDERGROUND UTILITIES PRIOR TO BEGINNING CONSTRUCTION ACTIVITIES. THE SIZE, ELEVATIONS AND LOCATIONS OF EXISTING UTILITIES AND SEWERS SHOWN ON THESE DRAWINGS MAY BE INCOMPLETE AND ARE APPROXIMATE ONLY. VARIOUS UNDERGROUND AND SURFACE STRUCTURES AND UTILITIES MAY NOT BE SHOWN ON THE PLANS. THE CONTRACTOR SHALL FIELD VERIFY SIZE, LOCATION AND ELEVATION PRIOR TO CONSTRUCTION. IF THE SIZE, ELEVATION AND/OR LOCATION OF EXISTING UTILITIES ARE FOUND DIFFERENT THAN THAT SHOWN IN THESE DRAWINGS, NO ADDITIONAL COMPENSATION WILL BE ALLOWED TO THE CONTRACTOR. THE CONTRACTOR SHALL BE RESPONSIBLE FOR KEEPING EXISTING UTILITIES IN SERVICE AND PROMPTLY REPAIRING ANY WHICH ARE DAMAGED DURING CONSTRUCTION.
- THE CONTRACTOR SHALL USE EXTREME CARE IN THIS CONSTRUCTION TO PROTECT THE PUBLIC'S PROPERTY, HEALTH AND SAFETY. ANY DAMAGE TO PROPERTY, FENCES, LANDSCAPING, ROADS, EXISTING UTILITIES, STORM SEWERS, DRAINAGE WAYS, ETC. AS A RESULT OF THIS CONSTRUCTION SHALL BE REPAIRED TO THE SATISFACTION OF THE OWNER OF SAME AT THE CONTRACTOR'S EXPENSE.
- CONSTRUCTION RUBBLE AND DEBRIS GENERATED BY CONSTRUCTION ACTIVITIES SHALL BE REMOVED FROM THE SITE BY THE CONTRACTOR AND DISPOSED IN A LEGAL MANNER.
- ALL EXCESS EXCAVATED MATERIAL NOT REQUIRED OR NOT SUITABLE FOR EMBANKMENT MATERIAL OR TOPSOIL SHALL BE REMOVED FROM THE SITE BY THE CONTRACTOR AT HIS EXPENSE.
- BORROW EXCAVATION REQUIRED TO CONSTRUCT IMPROVEMENTS TO THE PROPOSED ELEVATIONS SHALL BE FURNISHED AND PLACED BY THE CONTRACTOR AT HIS EXPENSE.
- ALL EARTHEN AREAS DISTURBED BY THE CONTRACTOR'S OPERATIONS SHALL RECEIVE A MINIMUM OF (4) FOUR INCHES OF TOPSOIL AND BE SEEDED. SEEDING SHALL NOT BE PERMITTED AT ANY TIME WHEN THE GROUND IS FROZEN, WET, OR IN AN UN-TILLABLE CONDITION.
- THE CONTRACTOR SHALL BE RESPONSIBLE FOR MAINTAINING DRAINAGE THROUGHOUT THE CONSTRUCTION OF THIS PROJECT. COSTS ASSOCIATED WITH THIS TASK SHALL BE INCIDENTAL TO THE CONTRACT.
- GRANULAR TRENCH BACKFILL SHALL BE PLACED IN ALL UTILITY TRENCHES UNDER OR WITHIN TWO (2) FEET OF ALL PROPOSED PAVEMENTS. BACKFILL SHALL BE MECHANICALLY COMPACTED IN LIFTS NOT TO EXCEED SIX (6) INCHES.
- ALL SAW CUTTING NECESSARY FOR SIDEWALK AND PAVEMENT REMOVAL SHALL BE INCIDENTAL TO THE CONTRACT.
- THE CONTRACTOR SHALL ARRANGE HIS WORK SO AS TO PROTECT THE EXISTING PAVEMENTS TO REMAIN FROM DAMAGE. ANY DAMAGE TO PAVEMENTS RESULTING FROM THE CONTRACTOR'S ACTIVITIES SHALL BE REPAIRED BY THE CONTRACTOR SOLELY AT THE CONTRACTOR'S EXPENSE. SUCH REPAIR SHALL INCLUDE, BUT NOT BE LIMITED TO, FULL DEPTH PAVEMENT REPLACEMENT.
- EROSION CONTROL PRACTICES SHALL BE IN ACCORDANCE WITH THE VILLAGE OF DEER CREEK CODE AND THE ILLINOIS URBAN MANUAL, LATEST EDITION.
- EROSION CONTROL OTHER THAN THAT SHOWN ON THE PLANS OR CALLED FOR IN THE SPECIFICATIONS WHICH MAY BE REQUIRED TO PREVENT THE EROSION OR WASHING OF DIRT ONTO ADJACENT LANDS, PUBLIC ROADS OR INTO GRASS WATERWAYS OR DITCHES SHALL BE INCIDENTAL TO THE CONTRACT.
- CONTRACTOR SHALL INSTALL EROSION CONTROL MEASURES AT THE ONSET OF CONSTRUCTION AND MAINTAIN UNTIL VEGETATIVE STABILIZATION HAS BEEN ACHIEVED.
- ALL SIDEWALK SHALL BE INSTALLED AT A CROSS SLOPE OF 2% OR LESS. ANY SIDEWALK INSTALLED AT A STEEPER GRADE SHALL BE REMOVED AND REPLACED AT THE CONTRACTORS EXPENSE.
- EXISTING SIDEWALK TO REMAIN SHALL BE EXAMINED AT THE START OF THE PROJECT AND ANY JOINTS FOUND WITH AN OFFSET GREATER THAN ONE QUARTER INCH SHALL HAVE ONE PANEL (4' X 4') REMOVED AND NEW SIDEWALK SHALL BE POURED WITH NEW JOINTS DEFLECTIONS LESS THAN ONE QUARTER INCH.
- INLET AND PIPE PROTECTION SHALL BE INSTALLED IN THE FIELD AT LOCATIONS AS SPECIFIED BY THE ENGINEER TO PREVENT SILT FROM LEAVING THE CONSTRUCTION SITE. A QUANTITY OF 3 HAS BEEN INCLUDED IN THE PLANS TO ESTABLISH A UNIT PRICE AND THE ACTUAL NUMBER REQUIRED SHALL BE DETERMINED IN THE FIELD BY THE ENGINEER.

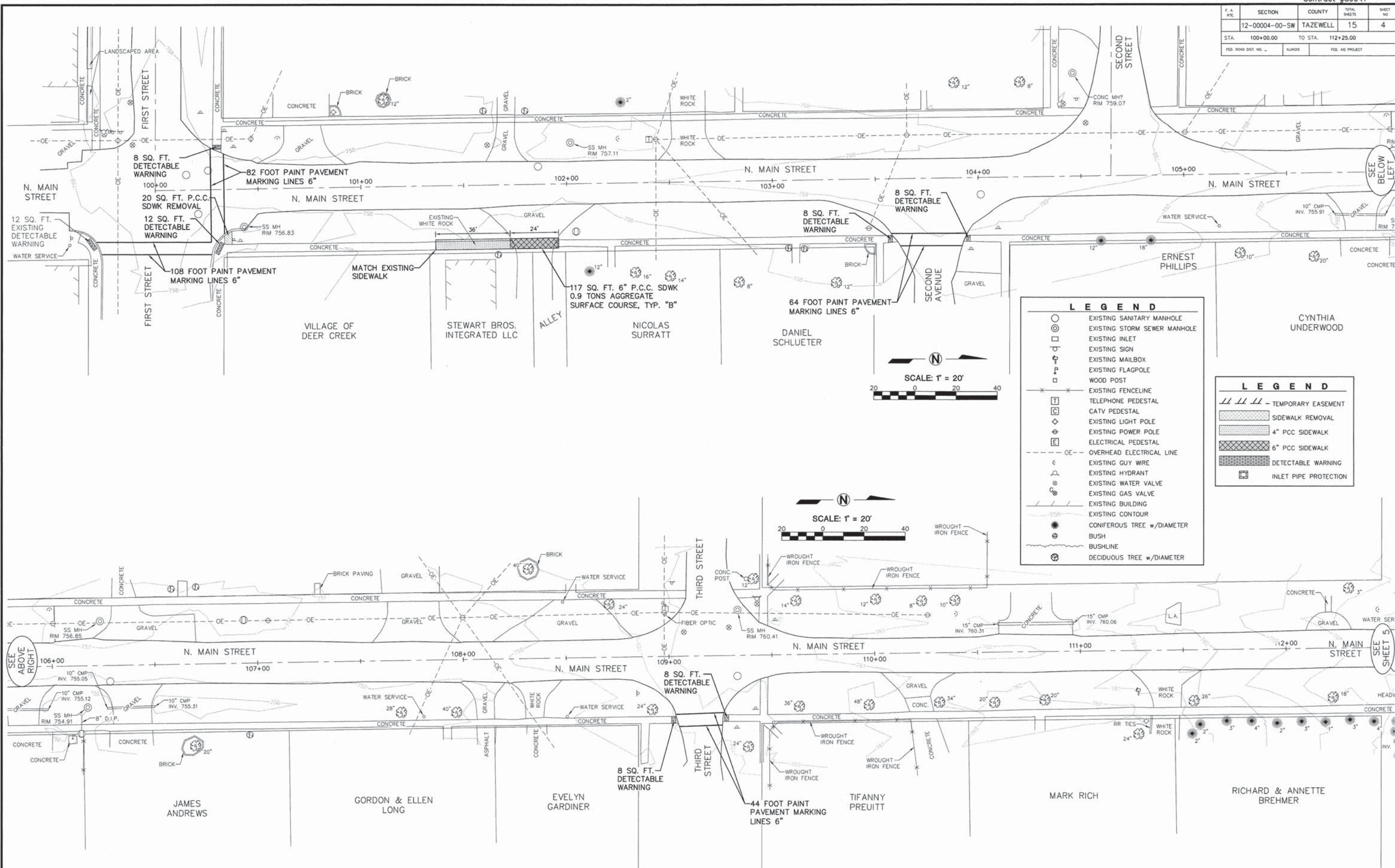
Lewis, Yockey & Brown, Inc.
Consulting Engineers & Land Surveyors
Professional Design Firm Registration #184,000806
505 North Main Street 222 East Center Street 155 South Elm Street
Bloomington, Illinois LeRoy, Illinois El Poso, Illinois
Ph. (309) 829-2552 Ph. (309) 962-8151 Ph. (309) 527-2552

Rev.	Bk.	778
	Drn.	MB
	Dsn.	EFD
	App.	LDY

**VILLAGE OF DEER CREEK
SAFE ROUTES TO SCHOOLS
SIDEWALK CORRIDOR
TYPICAL SECTIONS**

4008.70

F.A. No.	SECTION	COUNTY	TOTAL SHEETS	SHEET NO.
	12-00004-00-SW	TAZEWELL	15	4
STA. 100+00.00		TO STA. 112+25.00		
FED. ROAD DIST. NO.		ILLINOIS		FED. AID PROJECT



LEGEND

- EXISTING SANITARY MANHOLE
- ⊙ EXISTING STORM SEWER MANHOLE
- EXISTING INLET
- ⊕ EXISTING SIGN
- Ⓜ EXISTING MAILBOX
- Ⓢ EXISTING FLAGPOLE
- Ⓜ EXISTING WOOD POST
- EXISTING FENCELINE
- Ⓜ TELEPHONE PEDESTAL
- Ⓜ CATV PEDESTAL
- Ⓜ EXISTING LIGHT POLE
- Ⓜ EXISTING POWER POLE
- Ⓜ ELECTRICAL PEDESTAL
- - - - OVERHEAD ELECTRICAL LINE
- Ⓜ EXISTING GUY WIRE
- Ⓜ EXISTING HYDRANT
- Ⓜ EXISTING WATER VALVE
- Ⓜ EXISTING GAS VALVE
- Ⓜ EXISTING BUILDING
- Ⓜ EXISTING CONTOUR
- CONIFEROUS TREE w/DIAMETER
- ⊙ BUSH
- Ⓜ BUSHLINE
- Ⓜ DECIDUOUS TREE w/DIAMETER

LEGEND

- /// TEMPORARY EASEMENT
- ▨ SIDEWALK REMOVAL
- ▨ 4" PCC SIDEWALK
- ▨ 6" PCC SIDEWALK
- ▨ DETECTABLE WARNING
- Ⓜ INLET PIPE PROTECTION

Lewis, Yockey & Brown, Inc.
 Consulting Engineers & Land Surveyors
 Professional Design Firm Registration #184.000806
 505 North Main Street | 222 East Center Street | 155 South Elm Street
 Bloomington, Illinois | LeRoy, Illinois | El Paso, Illinois
 Ph. (309) 829-2552 | Ph. (309) 962-8151 | Ph. (309) 527-2552

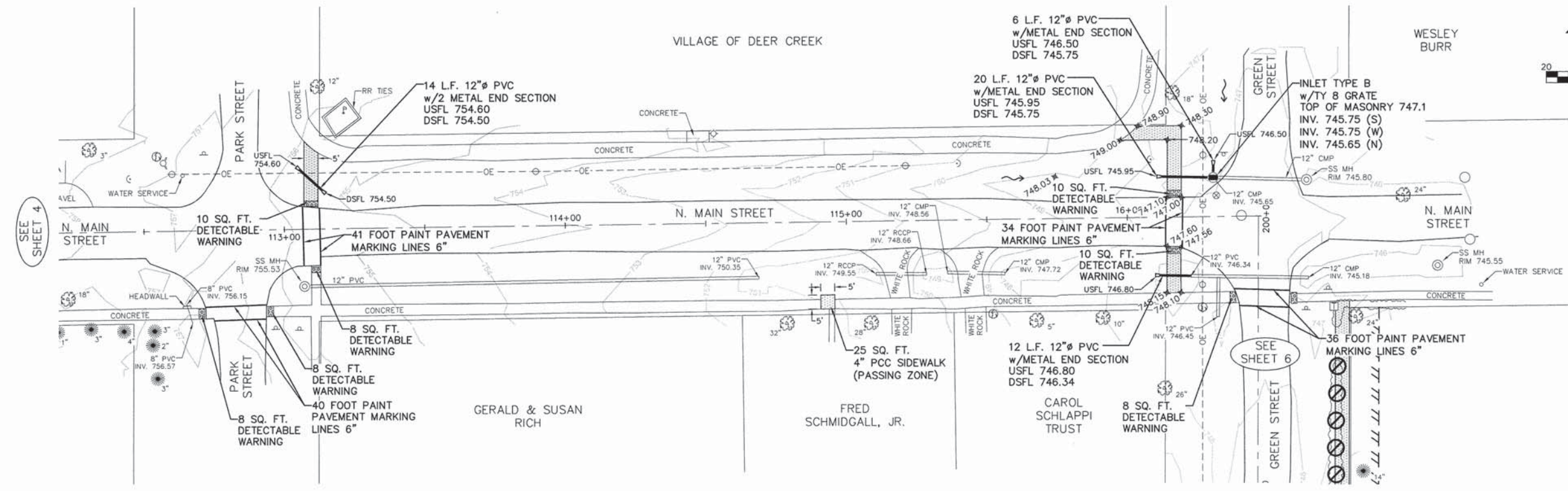
Rev.	Bk.	778
	Dwn.	MB
	Dsn.	EFD
	App.	LDY

**VILLAGE OF DEER CREEK
 SAFE ROUTES TO SCHOOLS
 MAIN STREET
 SIDEWALK CORRIDOR**

Sheet **4** of 15

4008.70

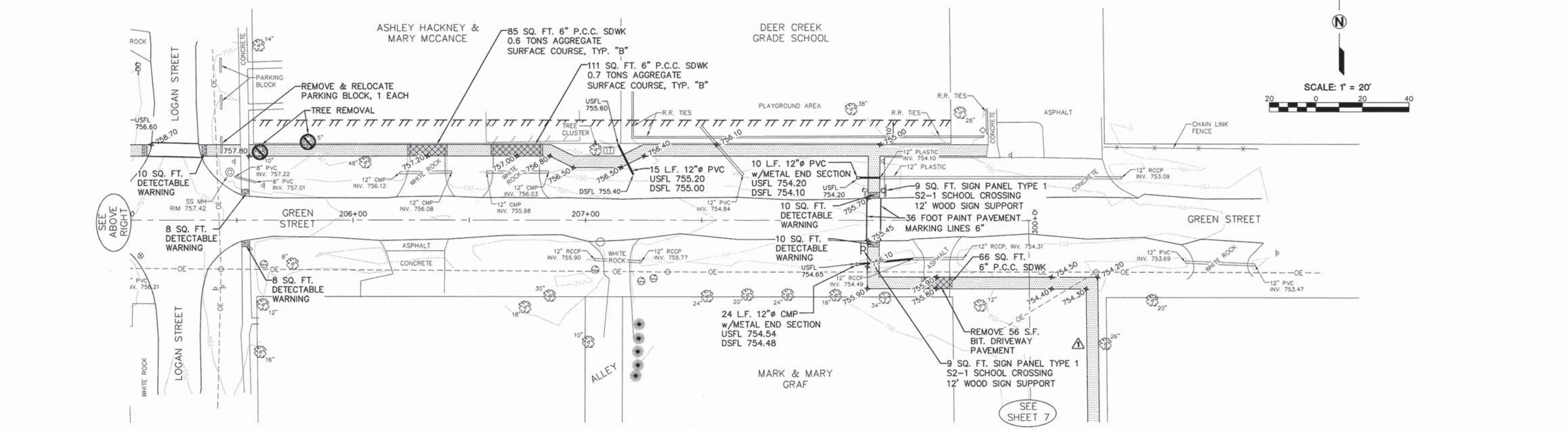
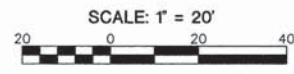
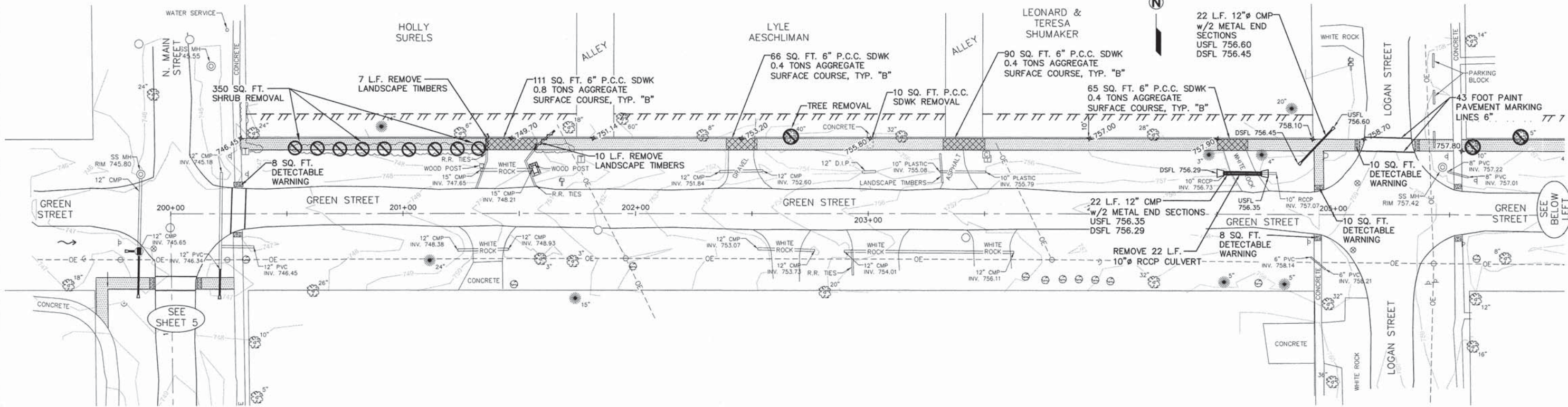
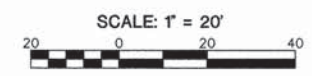
F. A. SITE	SECTION	COUNTY	TOTAL SHEETS	SHEET NO.
	12-00004-00-SW	TAZEWELL	15	5
STA. 112+25.00		TO STA. 116+50.00		
FED. ROAD DIST. NO. ...		ILLINOIS		FED. AID PROJECT



Lewis, Yockey & Brown, Inc. Consulting Engineers & Land Surveyors Professional Design Firm Registration #184,000806 505 North Main Street • Bloomington, Illinois Ph. (309) 829-2552 222 East Center Street • LeRoy, Illinois Ph. (309) 962-8151 155 South Elm Street • El Poso, Illinois Ph. (309) 527-2552		Rev. _____ Bk. 778 Dwn. MB Dwn. EFD App. LDY	VILLAGE OF DEER CREEK SAFE ROUTES TO SCHOOLS MAIN STREET PLAN SHEET	Sheet 5 of 15
--	--	--	--	----------------------------

4008.70

F. A. NO.	SECTION	COUNTY	TOTAL SHEETS	SHEET NO.
	12-00004-00-SW	TAZEWELL	15	6
STA.	200+00.00	TO STA.	209+00.00	
FED. ROAD DIST. NO.		ALINDS	FED. AID PROJECT	



Lewis, Yockey & Brown, Inc.
 Consulting Engineers & Land Surveyors
 Professional Design Firm Registration #184.000808
 505 North Main Street 222 East Center Street 155 South Elm Street
 •Bloomington, Illinois •LeRoy, Illinois •El Paso, Illinois
 Ph. (309) 829-2552 Ph. (309) 962-8151 Ph. (309) 527-2552

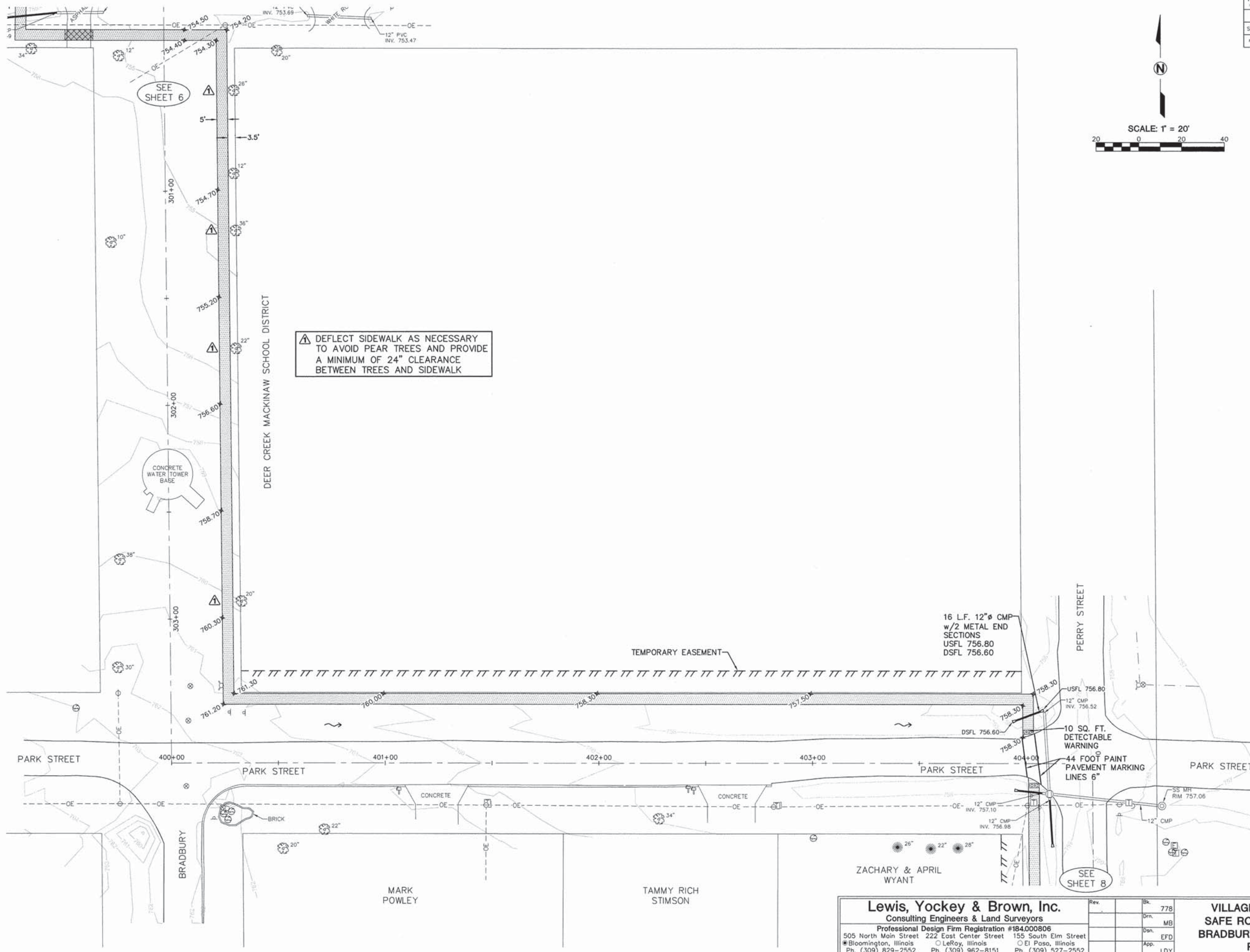
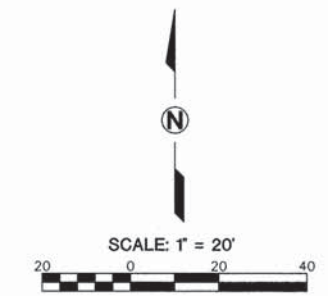
Rev.	Bk.	778
	Drn.	MB
	Dsn.	EFD
	App.	LDY

VILLAGE OF DEER CREEK
 SAFE ROUTES TO SCHOOLS
 GREEN STREET
 PLAN SHEET

Sheet
6
 of 15

4008.70

F. A. SITE	SECTION	COUNTY	TOTAL SHEETS	SHEET NO.
	12-00004-00-SW	TAZEWELL	15	7
STA. 300+00.00		TO STA. 404+50.00		
FED. ROAD DIST. NO. -	ILLINOIS	FED. AID PROJECT		



DEFLECT SIDEWALK AS NECESSARY TO AVOID PEAR TREES AND PROVIDE A MINIMUM OF 24" CLEARANCE BETWEEN TREES AND SIDEWALK

16 L.F. 12"Ø CMP w/2 METAL END SECTIONS
USFL 756.80
DSFL 756.60

10 SQ. FT. DETECTABLE WARNING
44 FOOT PAINT PAVEMENT MARKING LINES 6"

Lewis, Yockey & Brown, Inc.
Consulting Engineers & Land Surveyors
Professional Design Firm Registration #184,000806
505 North Main Street 222 East Center Street 155 South Elm Street
Bloomington, Illinois LeRoy, Illinois El Poso, Illinois
Ph. (309) 829-2552 Ph. (309) 962-8151 Ph. (309) 527-2552

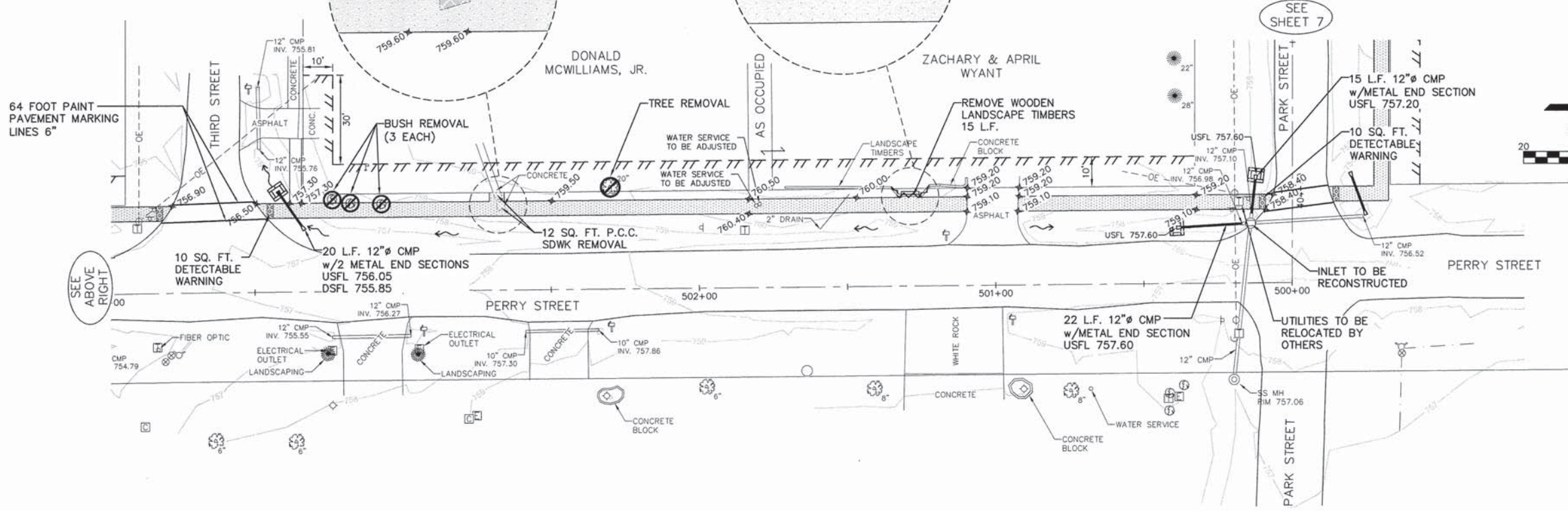
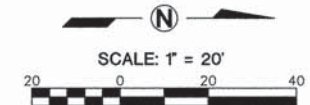
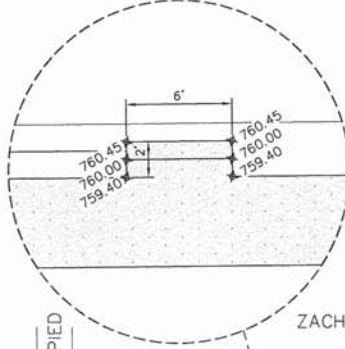
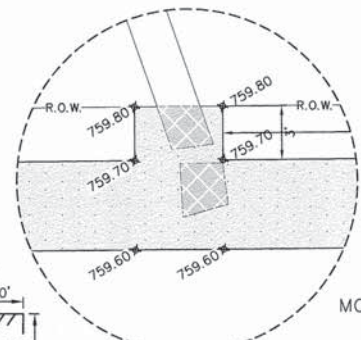
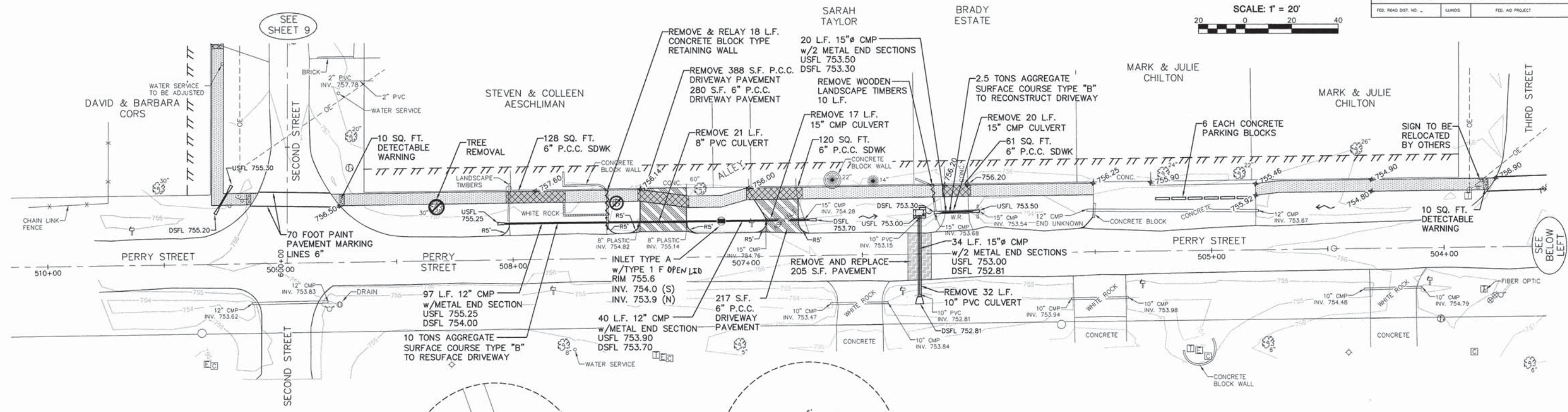
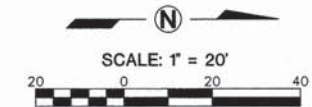
Rev.	Bk.	778
	Drn.	MB
	Des.	EFD
	App.	LDY

VILLAGE OF DEER CREEK
SAFE ROUTES TO SCHOOLS
BRADBURY AND PARK STREET
PLAN SHEET

Sheet
7
of 15

4008.70

F.A. No.	SECTION	COUNTY	TOTAL SHEETS	SHEET NO.
	12-0004-00-SW	TAZEWELL	15	8
STA. 500+00.00	TO STA. 509+50.00			
FED. ROAD DIST. NO.	LINOS	FED. AID PROJECT		



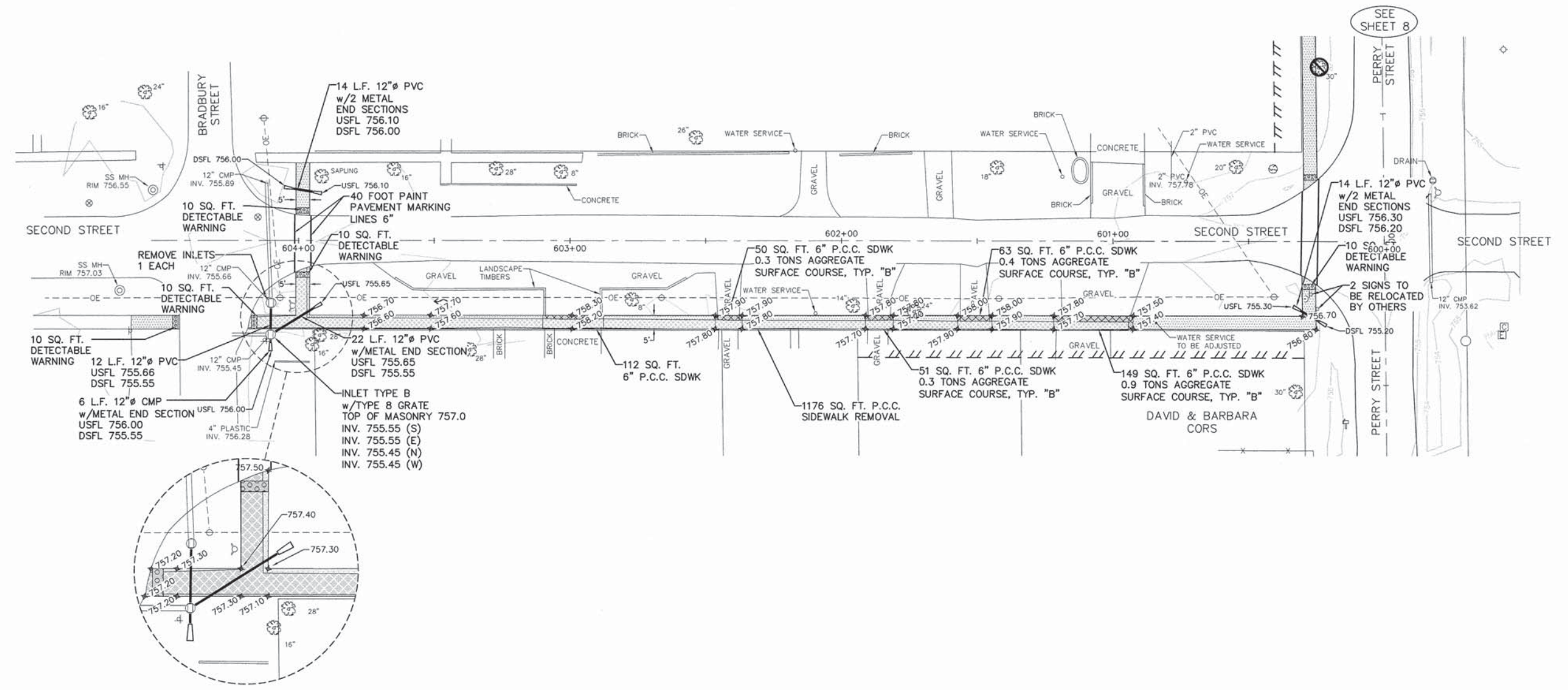
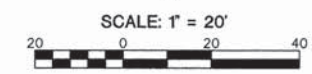
Lewis, Yockey & Brown, Inc.
 Consulting Engineers & Land Surveyors
 Professional Design Firm Registration #184,000806
 505 North Main Street 222 East Center Street 155 South Elm Street
 Bloomington, Illinois El Roy, Illinois El Poso, Illinois
 Ph. (309) 829-2552 Ph. (309) 962-8151 Ph. (309) 527-2552

Rev.	Bk.	778
	Drn.	MB
	Des.	EFD
	App.	LDY

VILLAGE OF DEER CREEK
SAFE ROUTES TO SCHOOLS
PERRY STREET
PLAN SHEET

4008.70

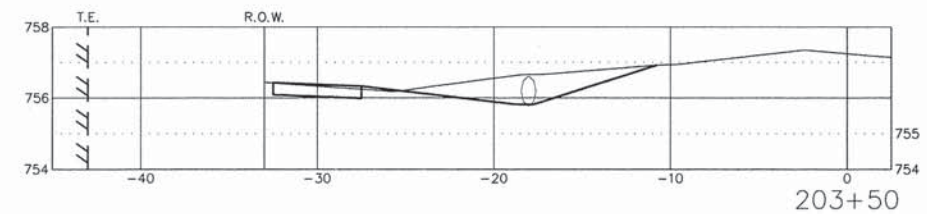
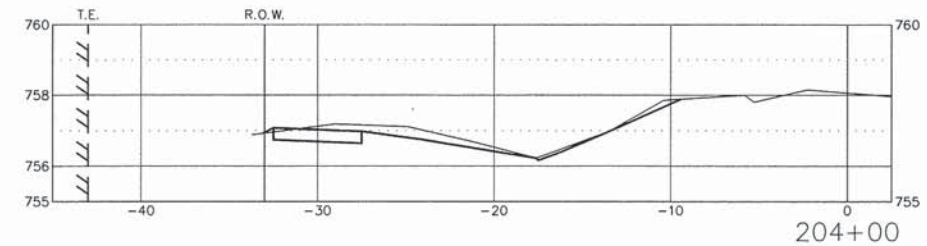
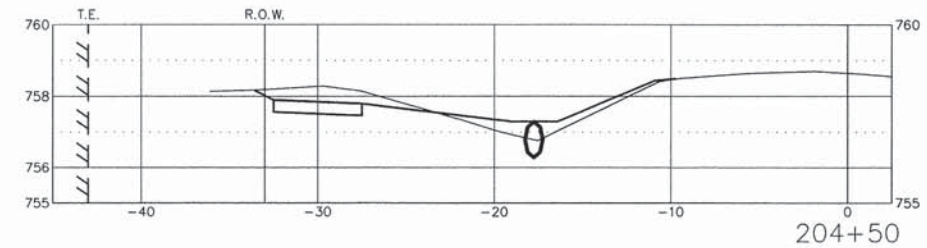
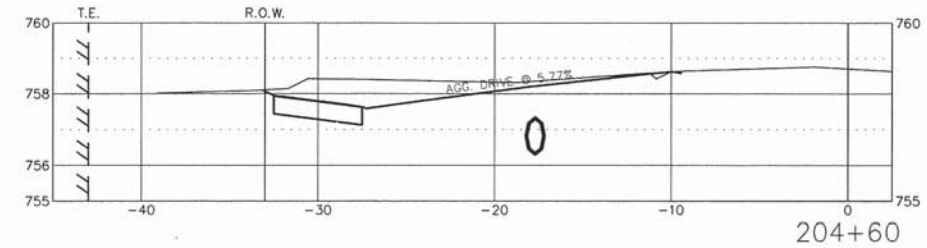
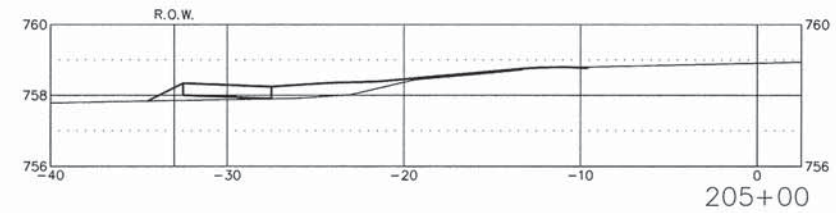
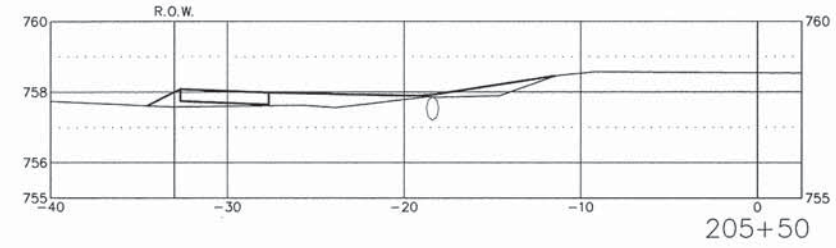
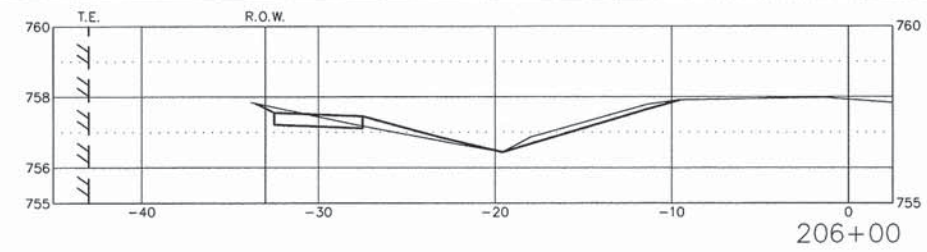
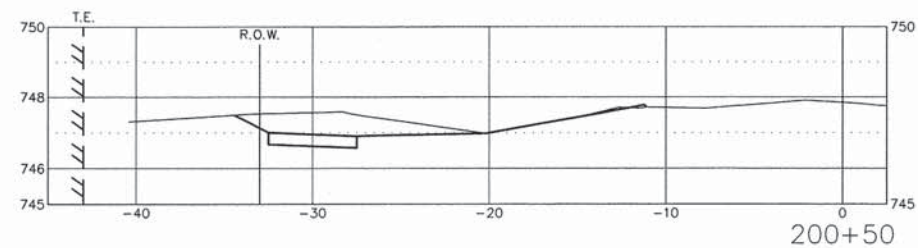
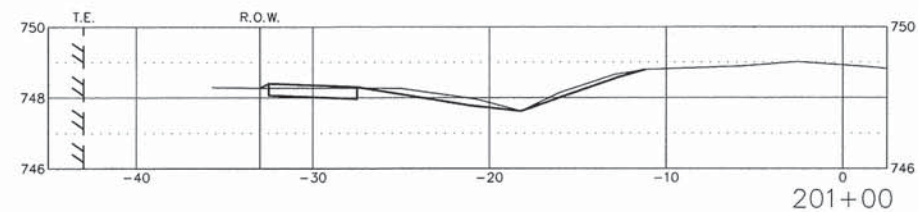
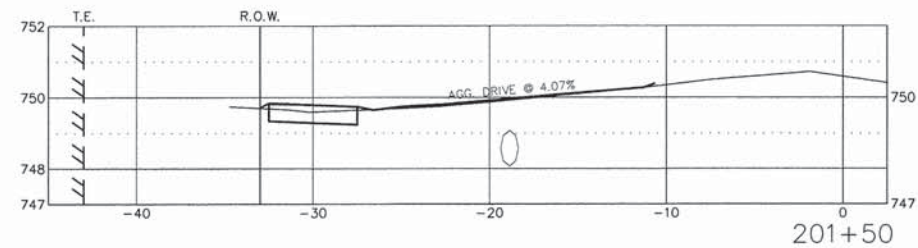
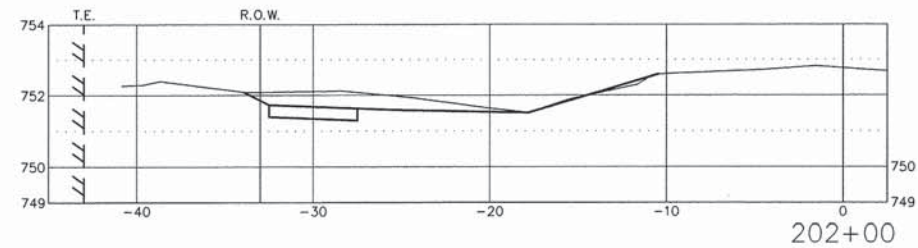
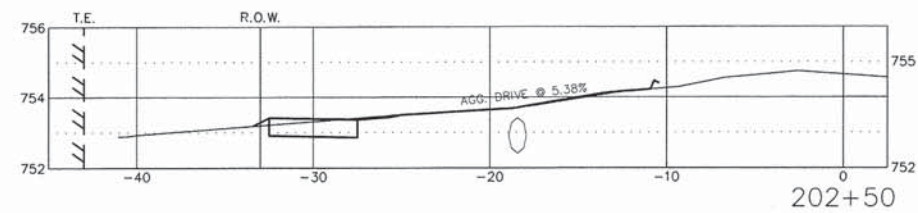
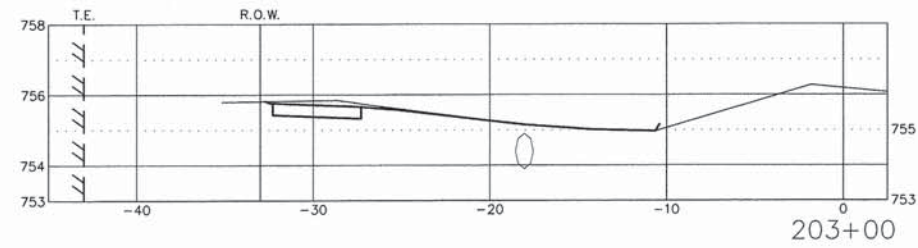
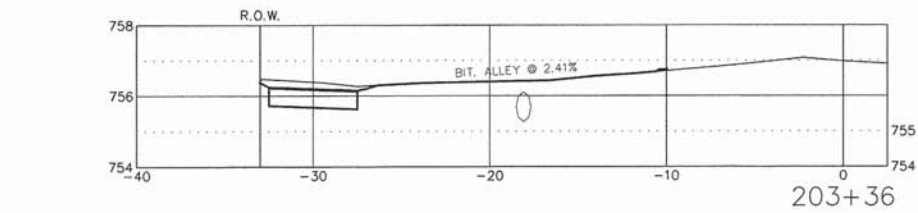
F. A. SHE.	SECTION	COUNTY	TOTAL SHEETS	SHEET NO.
	12-00004-00-SW	TAZEWELL	15	9
STA. 600+00.00		TO STA. 604+50.00		
FED. ROAD DIST. NO. -		ILLINOIS		FED. AID PROJECT



Lewis, Yockey & Brown, Inc. Consulting Engineers & Land Surveyors Professional Design Firm Registration #184.000806 505 North Main Street 222 East Center Street 155 South Elm Street Bloomington, Illinois LeRoy, Illinois El Poso, Illinois Ph. (309) 829-2552 Ph. (309) 962-8151 Ph. (309) 527-2552		Rev. _____ Bk. 778 Dwn. MB Dsn. EFD App. LDY	VILLAGE OF DEER CREEK SAFE ROUTES TO SCHOOLS SECOND STREET PLAN SHEET	Sheet 9 of 15
--	--	--	--	----------------------------

4008.70

F. A. #	SECTION	COUNTY	TOTAL SHEETS	SHEET NO.
	12-00004-00-SW	TAZEWELL	15	10
STA.		TO STA.		
FED. ROAD DIST. NO.		ILLINOIS	FED. AID PROJECT	



ALL SIDEWALKS SLOPE @ 2.0%

Lewis, Yockey & Brown, Inc.
 Consulting Engineers & Land Surveyors
 Professional Design Firm Registration #184.000806
 505 North Main Street 222 East Center Street 155 South Elm Street
 Bloomington, Illinois LeRoy, Illinois El Paso, Illinois
 Ph. (309) 829-2552 Ph. (309) 962-8151 Ph. (309) 527-2552

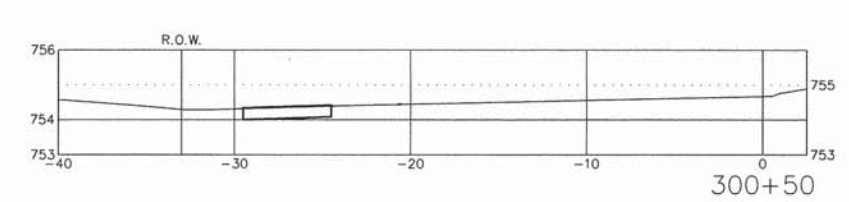
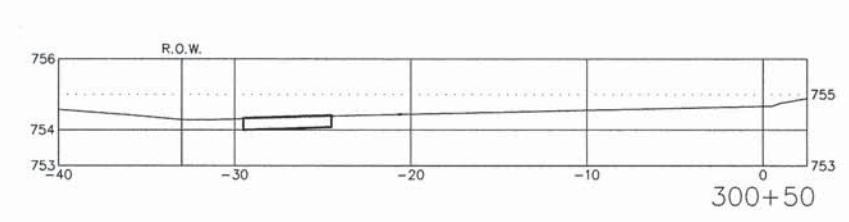
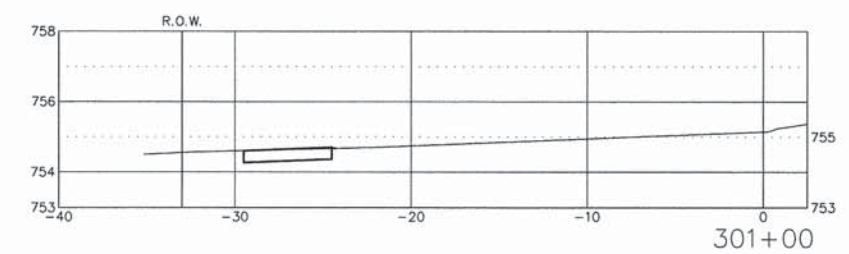
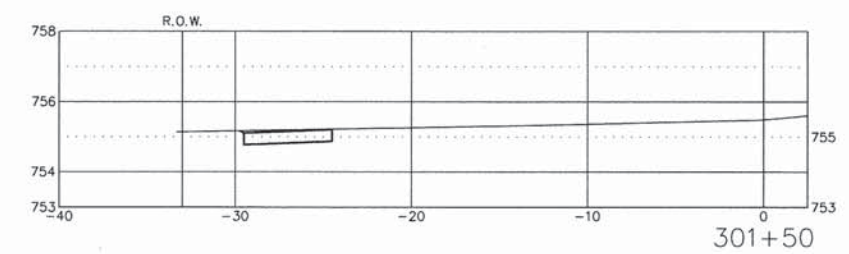
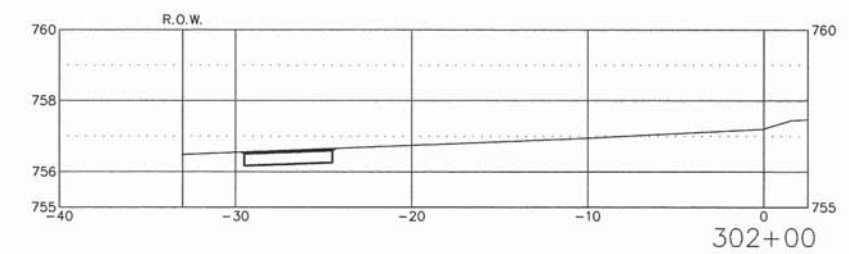
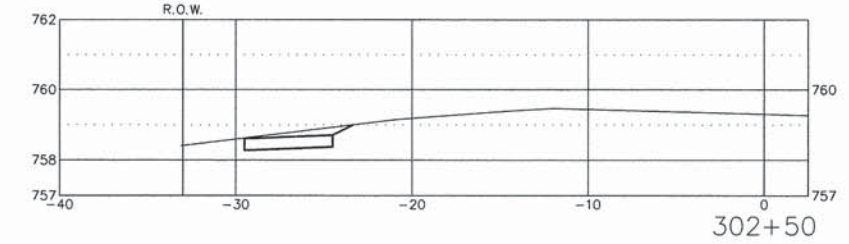
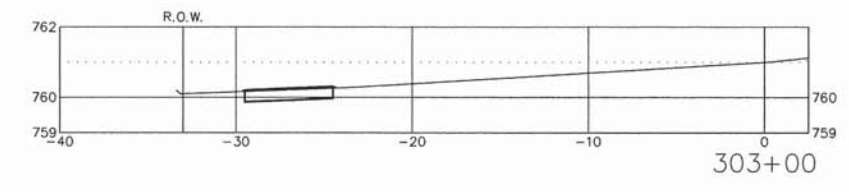
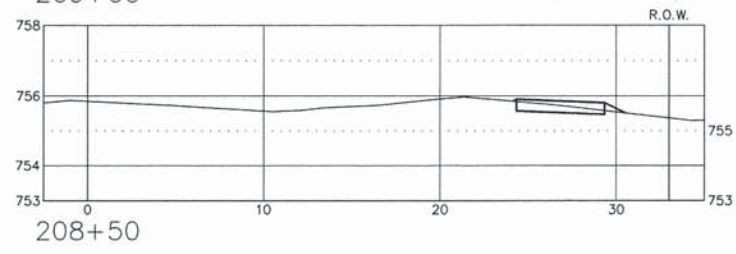
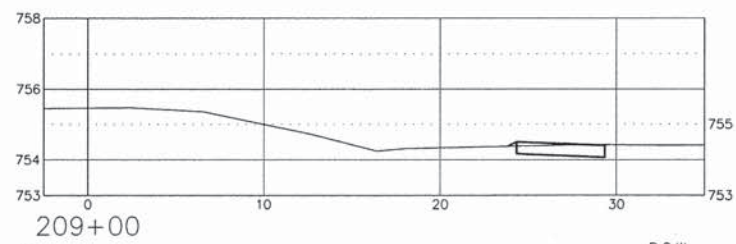
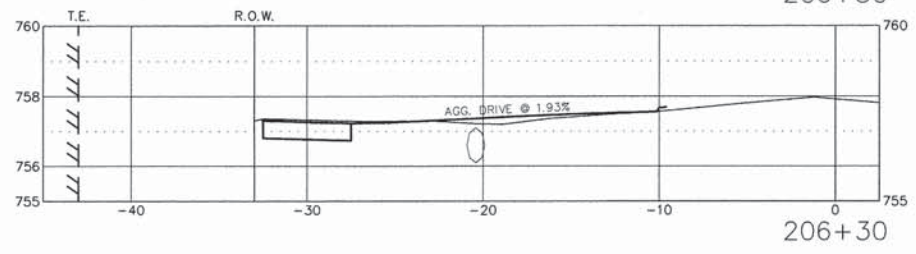
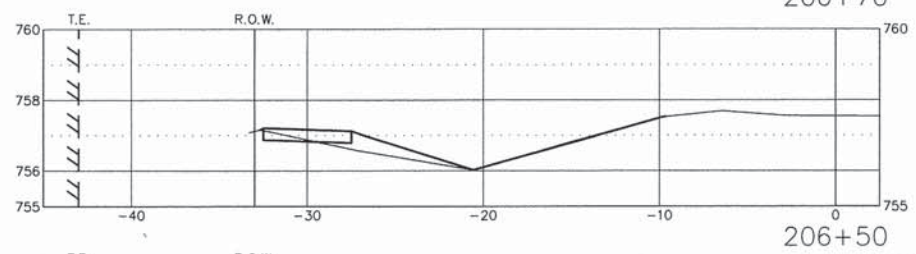
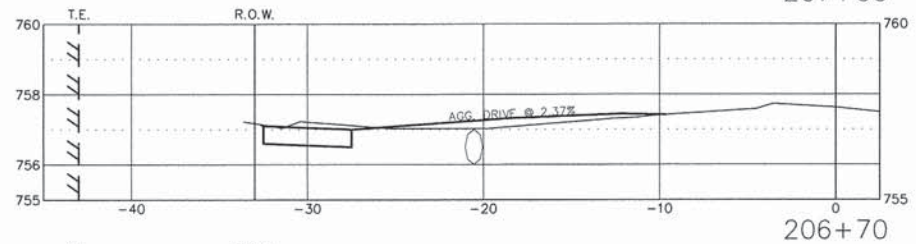
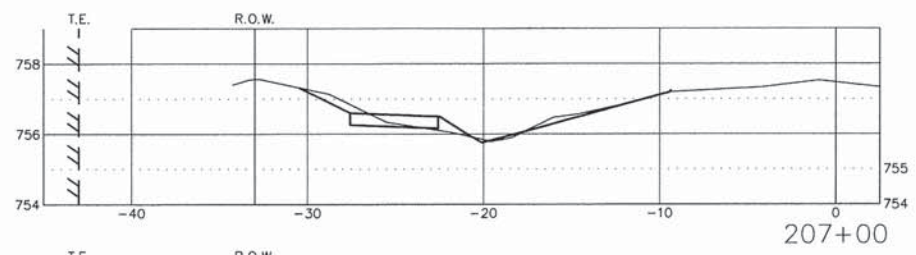
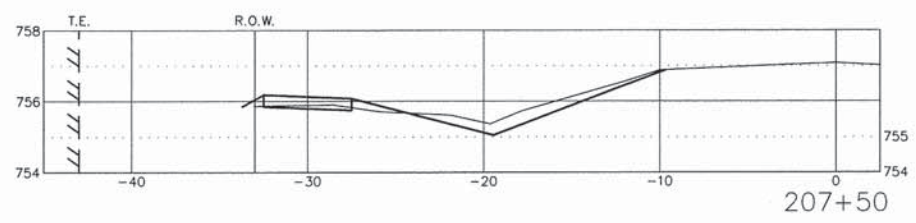
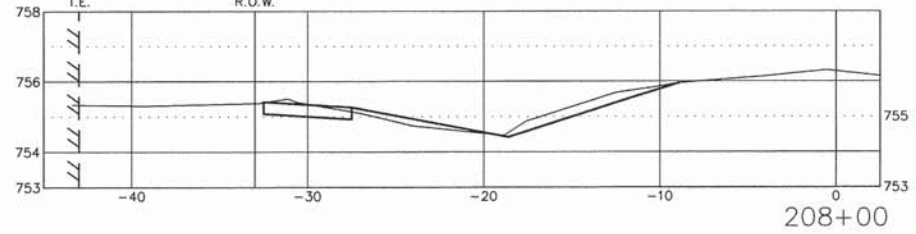
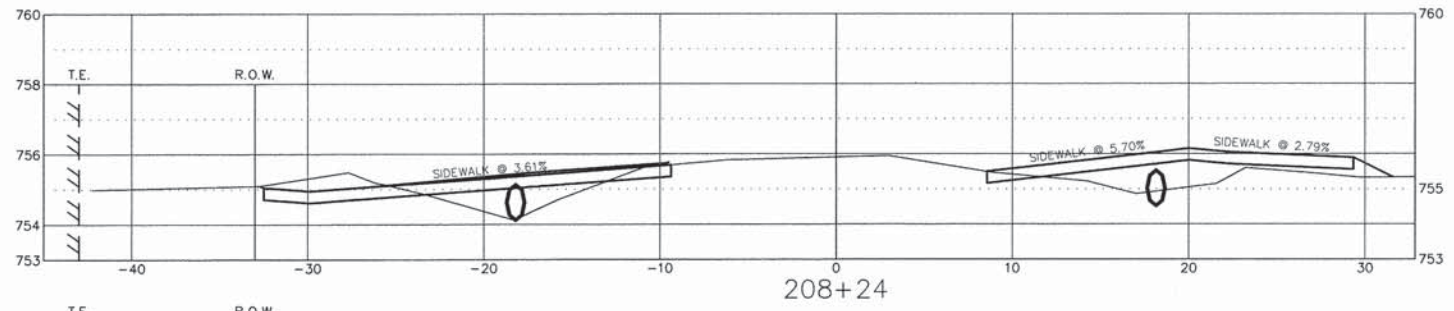
Rev.	Bk.
	778
	Dm.
	MB
	Dsn.
	EFD
	App.
	LDY

VILLAGE OF DEER CREEK
 SAFE ROUTES TO SCHOOLS
 GREEN STREET
 CROSS SECTIONS

Sheet
10
 of 15

4008.70

F. A. RITE.	SECTION	COUNTY	TOTAL SHEETS	SHEET NO.
	12-00004-00-SW	TAZEWELL	15	11
STA. TO STA.				
FED. ROAD DIST. NO. -	KINDS	FED. AID PROJECT		

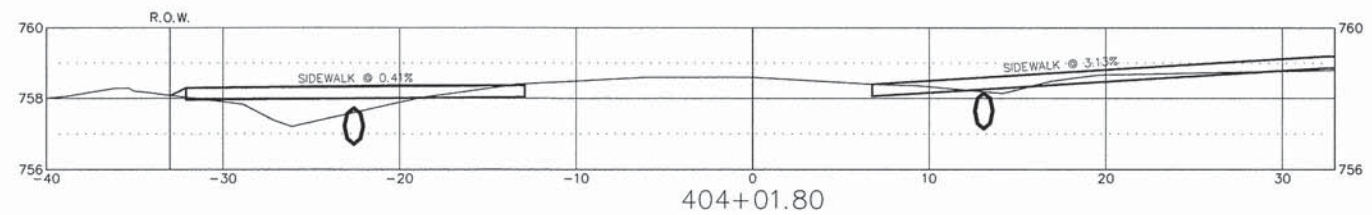
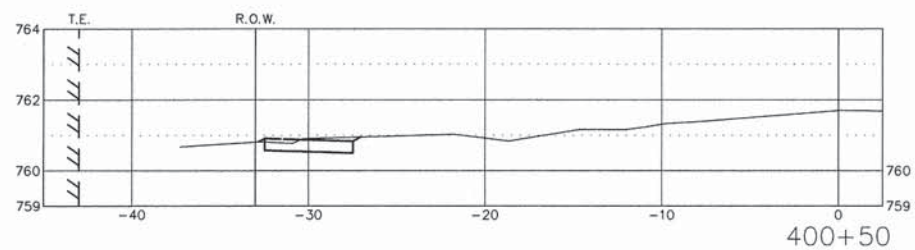
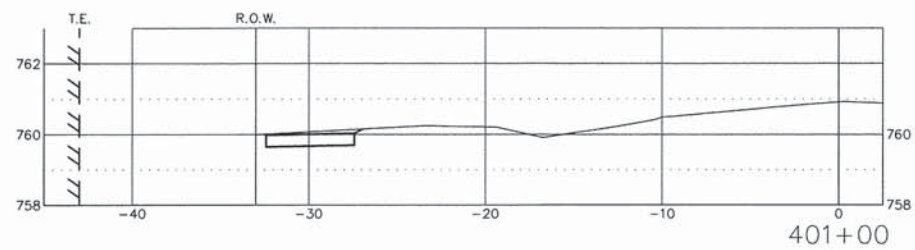
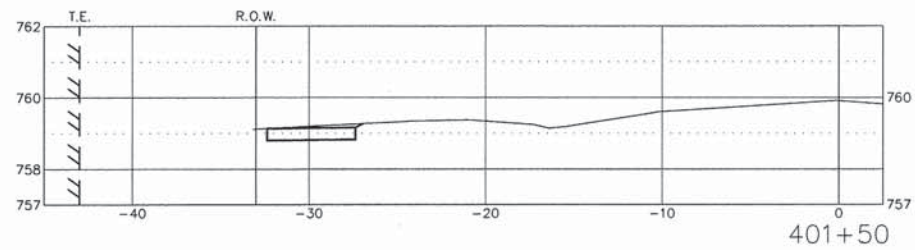
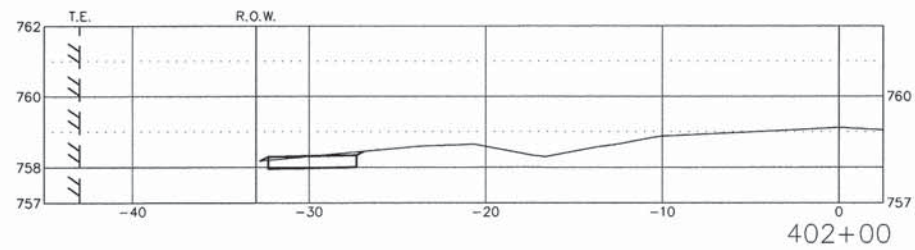
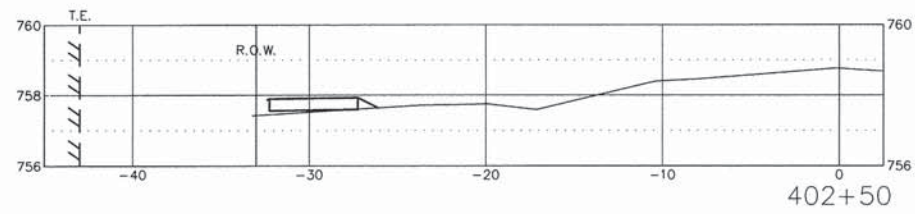
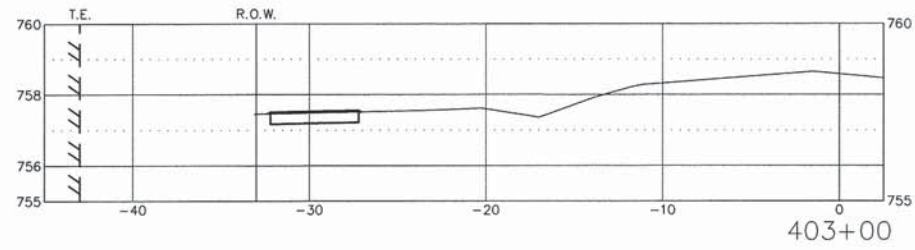
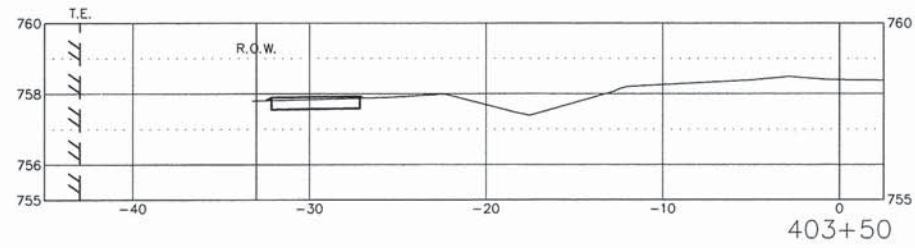


ALL SIDEWALKS SLOPE @ 2.0%

Lewis, Yockey & Brown, Inc. Consulting Engineers & Land Surveyors Professional Design Firm Registration #184.000806 505 North Main Street 222 East Center Street 155 South Elm Street Bloomington, Illinois LeRoy, Illinois El Poso, Illinois Ph. (309) 829-2552 Ph. (309) 962-8151 Ph. (309) 527-2552			Rev. _____ Blk. 77B Dwn. MB Desn. EFD App. LDY	VILLAGE OF DEER CREEK SAFE ROUTES TO SCHOOLS GREEN STREET & BRADBURY CROSS SECTIONS	Sheet 11 of 15
--	--	--	--	--	-----------------------------

4008.70

F. A. R.T.E.	SECTION	COUNTY	TOTAL SHEETS	SHEET NO.
	12-00004-00-SW	TAZEWELL	15	12
STA.		TO STA.		
FED. ROAD DIST. NO. -		ILLINOIS	FED. AID PROJECT	

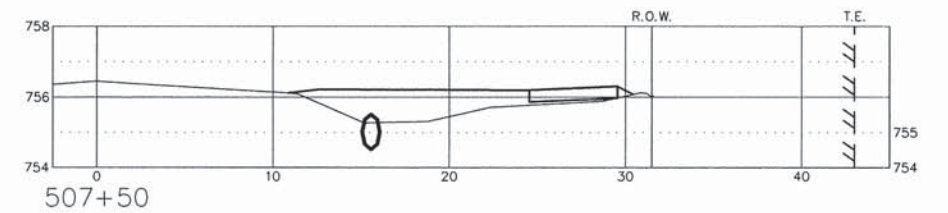
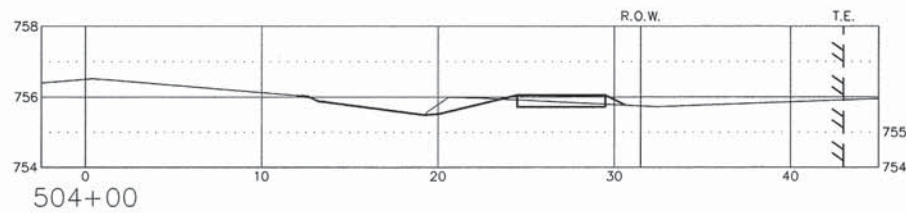
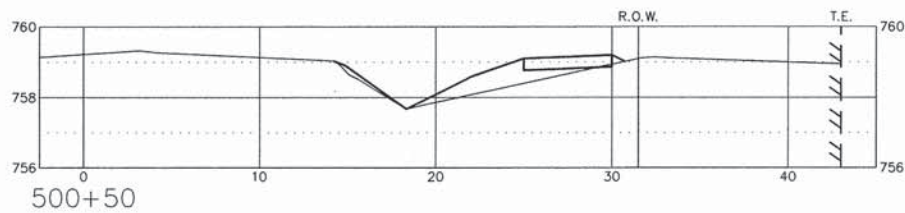
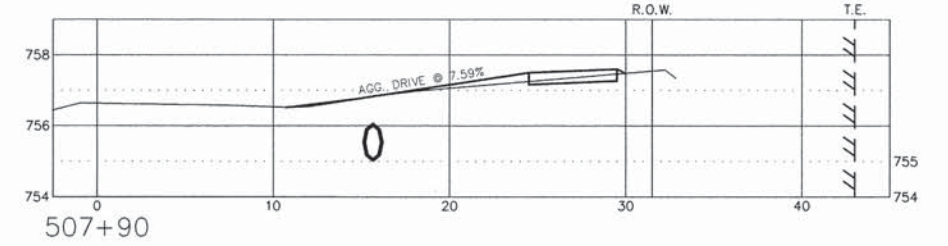
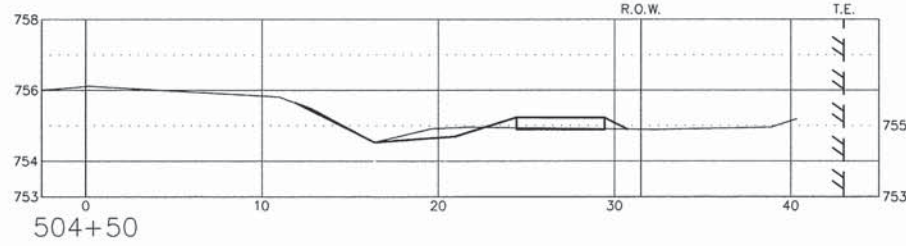
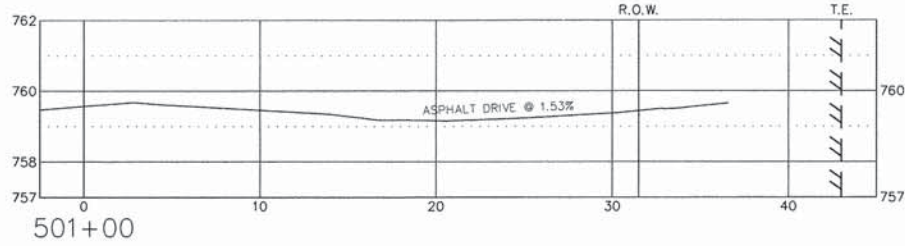
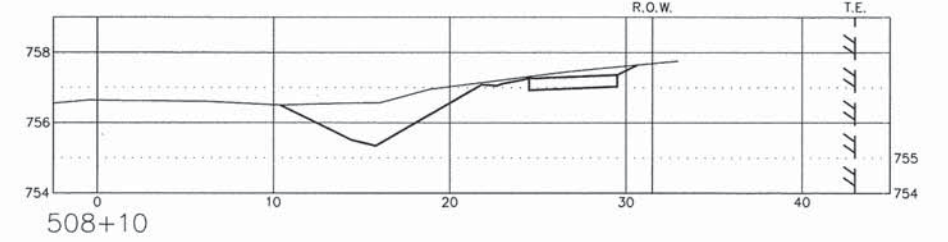
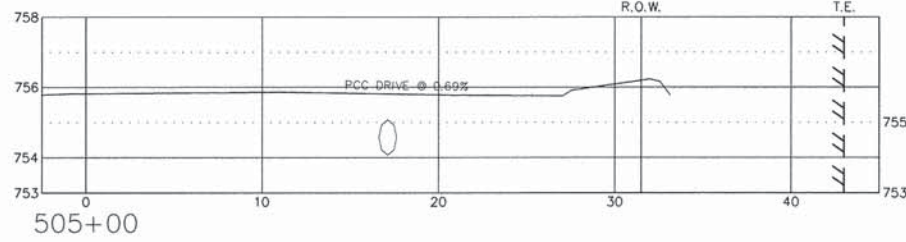
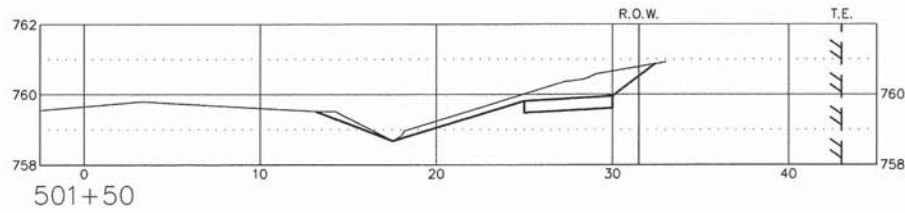
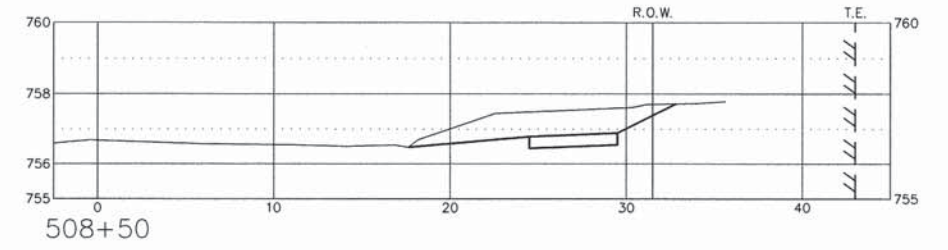
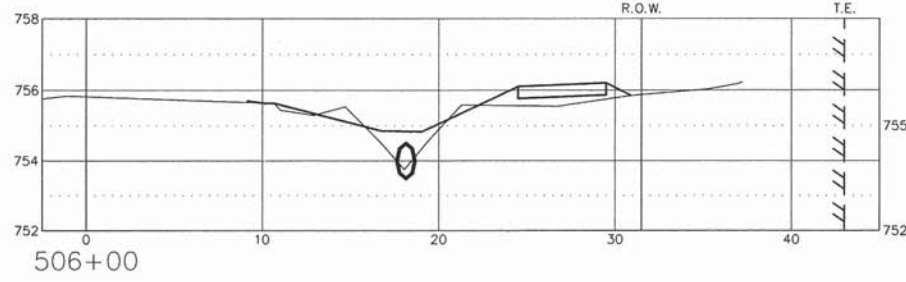
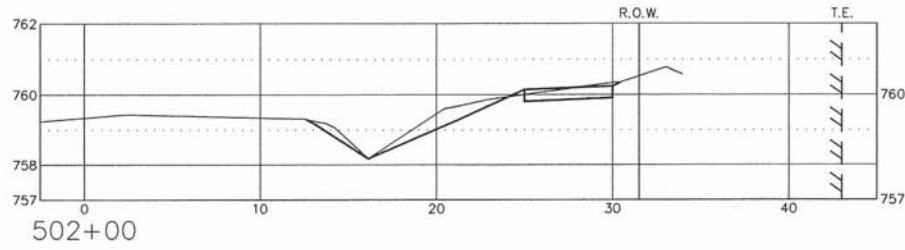
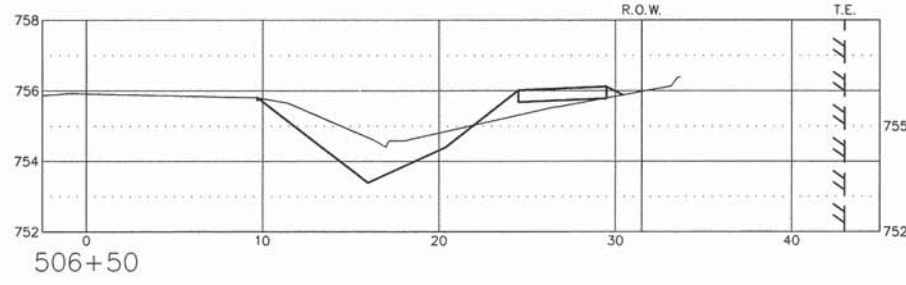
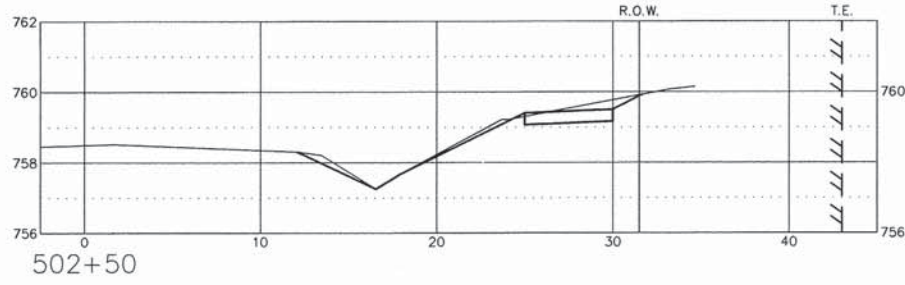
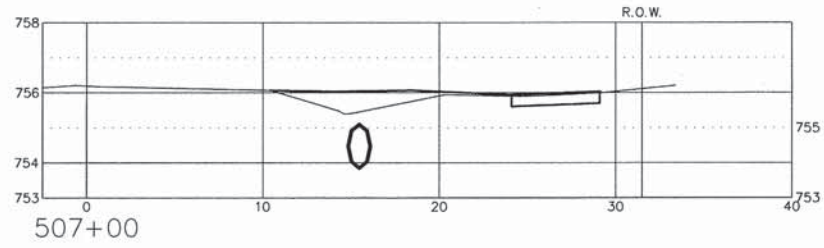
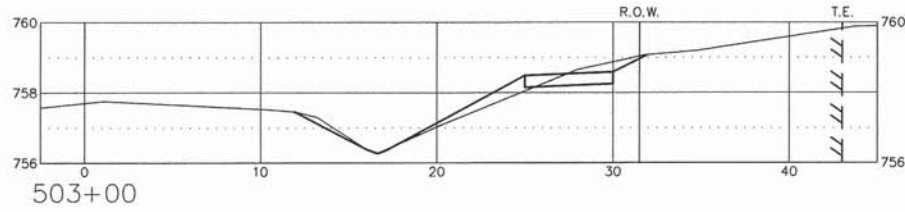


ALL SIDEWALKS SLOPE @ 2.0%

Lewis, Yockey & Brown, Inc. Consulting Engineers & Land Surveyors Professional Design Firm Registration #184.000806 505 North Main Street 222 East Center Street 155 South Elm Street Bloomington, Illinois LeRoy, Illinois El Paso, Illinois Ph. (309) 829-2552 Ph. (309) 962-8151 Ph. (309) 527-2552			Rev. _____ Dwn. MB Dsn. EFD App. LDY	Gk. 778 Dn. MB Dsn. EFD App. LDY	VILLAGE OF DEER CREEK SAFE ROUTES TO SCHOOLS PARK STREET CROSS SECTIONS	Sheet 12 of 15
--	--	--	---	---	--	-----------------------------

4008.70

F. A. SHEET	SECTION	COUNTY	TOTAL SHEETS	SHEET NO.
	12-00004-00-SW	TAZEWELL	15	13
STA.		TO STA.		
FED. ROAD DIST. NO.	LANDS	FED. AID PROJECT		



ALL SIDEWALKS SLOPE @ 2.0%

Lewis, Yockey & Brown, Inc.
 Consulting Engineers & Land Surveyors
 Professional Design Firm Registration #184.000806
 505 North Main Street 222 East Center Street 155 South Elm Street
 Bloomington, Illinois LeRoy, Illinois El Paso, Illinois
 Ph. (309) 829-2552 Ph. (309) 962-8151 Ph. (309) 527-2552

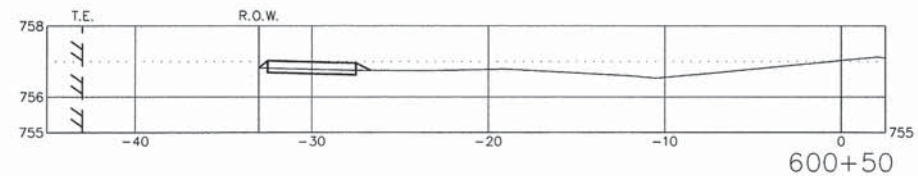
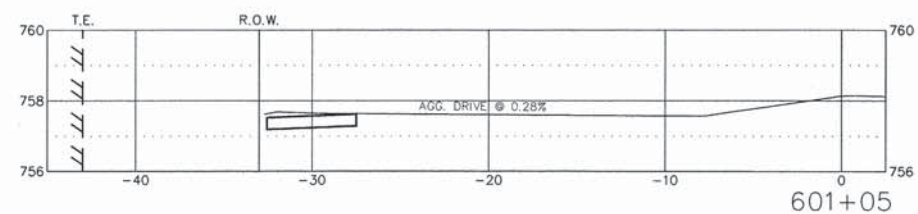
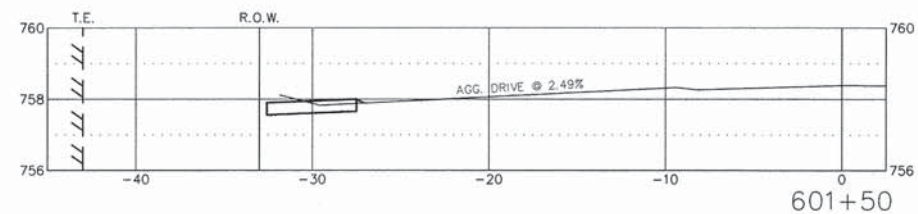
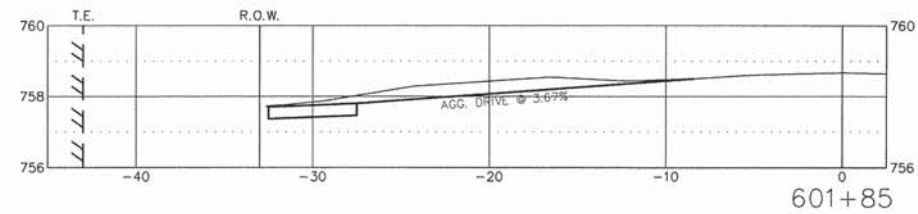
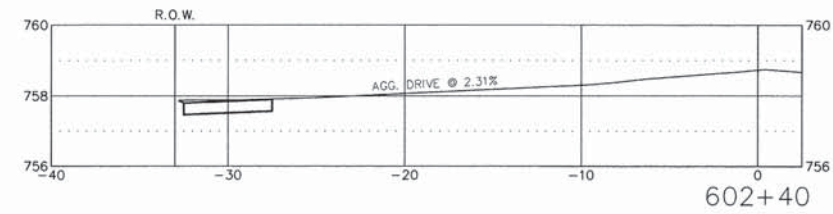
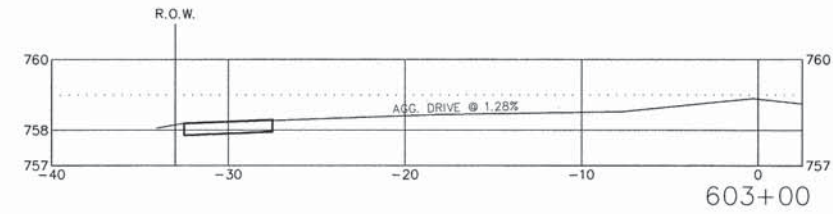
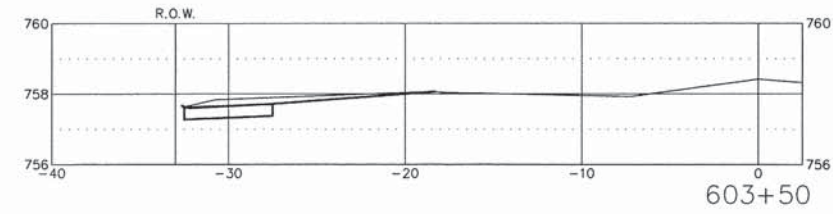
Rev.	Bk.	778
	Drn.	MB
	Des.	EFD
	App.	LDY

VILLAGE OF DEER CREEK
 SAFE ROUTES TO SCHOOLS
 PERRY STREET
 CROSS SECTIONS

Sheet
13
 of 15

4008.70

F. A. RITE	SECTION	COUNTY	TOTAL SHEETS	SHEET NO.
	12-00004-00-SW	TAZEWELL	15	14
STA. TO STA.				
FED. ROAD DIST. NO. -	BLANDS	FED. AID PROJECT		



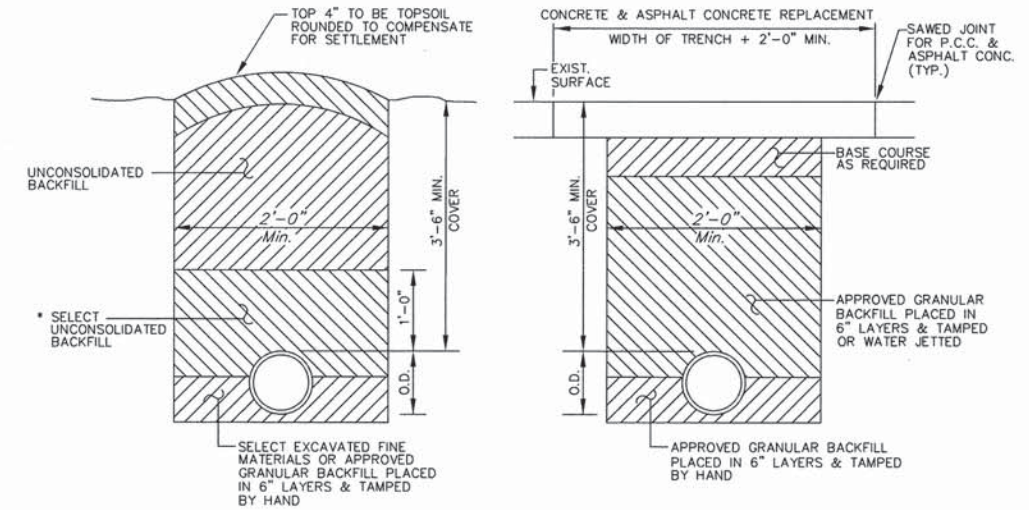
ALL SIDEWALKS SLOPE @ 2.0%

Lewis, Yockey & Brown, Inc.
 Consulting Engineers & Land Surveyors
 Professional Design Firm Registration #184,000806
 505 North Main Street 222 East Center Street 155 South Elm Street
 • Bloomington, Illinois • LeRoy, Illinois • El Poso, Illinois
 Ph. (309) 829-2552 Ph. (309) 962-8151 Ph. (309) 527-2552

Rev.	Bk.
	778
	Drn. MB
	Dsn. EFD
	App. LDY

VILLAGE OF DEER CREEK
 SAFE ROUTES TO SCHOOLS
 SECOND STREET
 CROSS SECTIONS

F. A. SITE	SECTION	COUNTY	TOTAL SHEETS	SHEET NO.
	12-00004-00-SW	TAZEWELL	15	15
STA. TO STA.				
FED. ROAD DIST. NO.		ILLINOIS	FED. AID PROJECT	



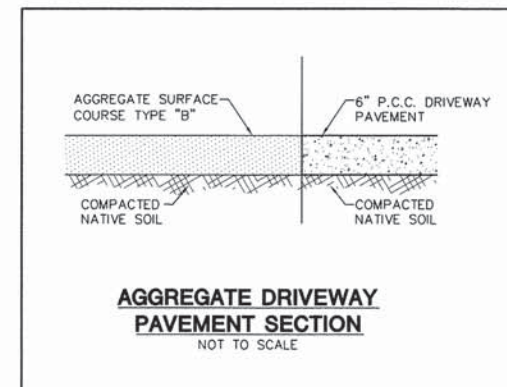
METHOD I
(FOR BACKFILLING IN UNIMPROVED AREAS)

METHOD II
(FOR BACKFILLING ACROSS P.C.C., ASPHALT CONC., & CHIP AND OIL SURFACES)

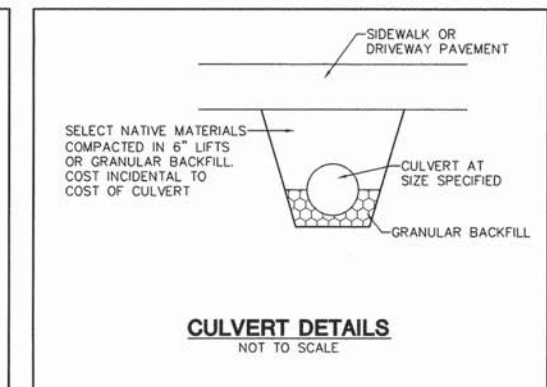
* SELECT GRANULAR BACKFILL FOR P.V.C. SEWER PIPE SHALL BE CA-16 COMPACTED TO 85% OF STANDARD PROCTOR OR FA-6 COMPACTED TO 90% OF STANDARD PROCTOR. CONSTRUCT ACCORDING TO ART. 20-2.20B AND 20-2.21A OF THE STANDARD SPECIFICATIONS FOR WATER & SEWER MAIN CONSTRUCTION IN ILLINOIS, LATEST EDITION

NOTE: TRENCHES SHALL BE KEPT AS NARROW AS POSSIBLE TO ALLOW FOR SAFE AND PROPER SEWER INSTALLATION. TRENCH SIDES SHALL BE VERTICAL TO A POINT 1'-0" ABOVE THE TOP OF THE PIPE. ABOVE THIS POINT SLOPED SIDES MAY BE USED IF CONDITIONS PERMIT.

TRENCH BACKFILL DETAILS
NO SCALE



AGGREGATE DRIVEWAY PAVEMENT SECTION
NOT TO SCALE



CULVERT DETAILS
NOT TO SCALE

Lewis, Yockey & Brown, Inc.
Consulting Engineers & Land Surveyors
Professional Design Firm Registration #184.000806
505 North Main Street 222 East Center Street 155 South Elm Street
Bloomington, Illinois LeRoy, Illinois El Paso, Illinois
Ph. (309) 829-2552 Ph. (309) 962-8151 Ph. (309) 527-2552

Rev.		Bk.	778
		Dwn.	MB
		Dsn.	EFD
		App.	LDY

VILLAGE OF DEER CREEK
SAFE ROUTES TO SCHOOLS
DETAILS