

INDEX OF SHEETS ON SHEET NO. 2

STATE OF ILLINOIS
DEPARTMENT OF PUBLIC WORKS AND BUILDINGS
DIVISION OF HIGHWAYS
PLANS FOR PROPOSED
FEDERAL AID INTERSTATE HIGHWAY

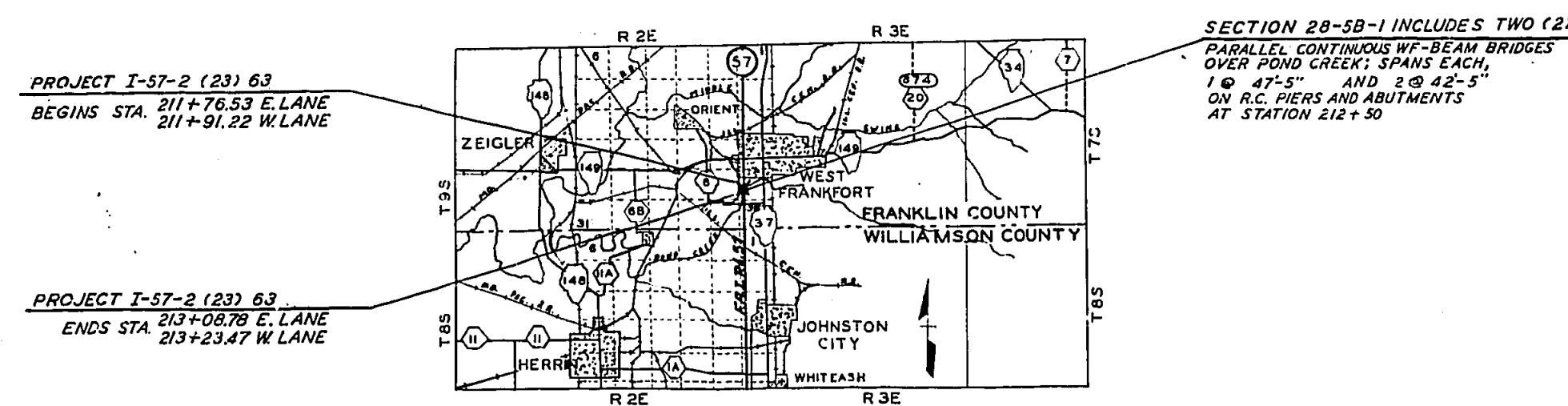
SCALES { PLAN 1 INCH = 100 FT.
PROFILE HOR. 1 INCH = 100 FT.
PROFILE VERT. 1 INCH = 10 FT.
CROSS SECTION 1 INCH = 8 FT.

F. A. I. ROUTE 57
SECTION 28-5B-1
FRANKLIN COUNTY
PROJECT I-57-2(23)63

PROJECT NO.	SEC.	COUNTY	DATE	SHEET
F.A.I. 57-2(23)63	28-5B-1	FRANKLIN	19	1



LOCATION OF SECTION INDICATED THUS: —



LAYOUT
APPROXIMATE SCALE 1"=3 MILES
NET LENGTH=132.25 LIN. FT.=0.025 MI.
NET PROJECT LENGTH = 0.025 MI.

STATE OF ILLINOIS
DEPARTMENT OF PUBLIC WORKS AND BUILDINGS
DIVISION OF HIGHWAYS
SUBMITTED: *[Signature]*
EXAMINED: *[Signature]* May 24, 1961
PASSED: *[Signature]*
APPROVED: *[Signature]* May 24, 1961
APPROVED: *[Signature]* May 24, 1961

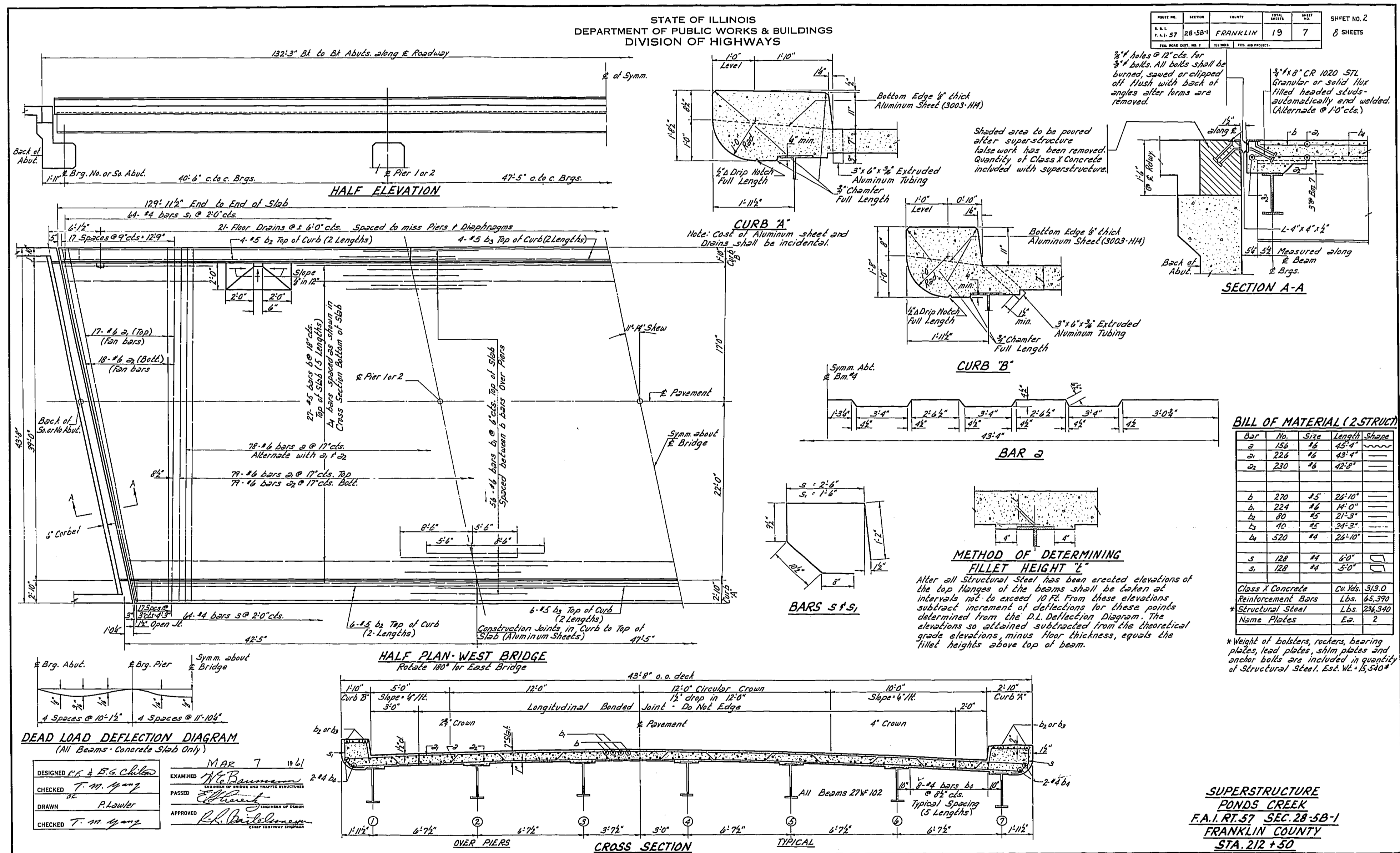
DEPARTMENT OF COMMERCE
BUREAU OF PUBLIC ROADS
APPROVED: _____
DIVISION ENGINEER DATE

Job No. 20855
FRANKLIN COUNTY SECTION 28-5B-1 F.A.I. ROUTE 57



STATE OF ILLINOIS
DEPARTMENT OF PUBLIC WORKS & BUILDINGS
DIVISION OF HIGHWAYS

PROJECT NO.	SECTION	COUNTY	DATE	SHEET NO.
F.A.I. RT-57	28-58-1	FRANKLIN	19 7	8 SHEETS
TITLE: SUPERSTRUCTURE				

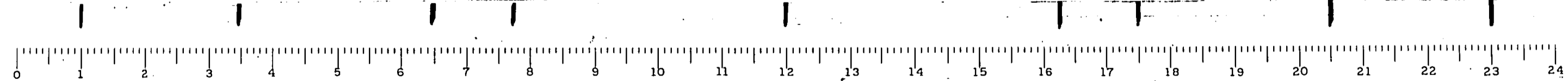


BILL OF MATERIAL (2 STRUCT)

Bar	No.	Size	Length	Shape
a	156	#6	45'-4"	
b	224	#6	45'-4"	
c	230	#6	42'-0"	
d	270	#5	24'-10"	
e	224	#6	14'-0"	
f	80	#6	21'-3"	
g	40	#6	21'-3"	
h	520	#4	24'-10"	
s	128	#4	8'-0"	
s	128	#4	5'-0"	
Class I Concrete				Cu No. 313.0
Reinforcement Bars				Lbs. 85,370
Structural Steel				Lbs. 234,340
Name Plates				Eq. 2

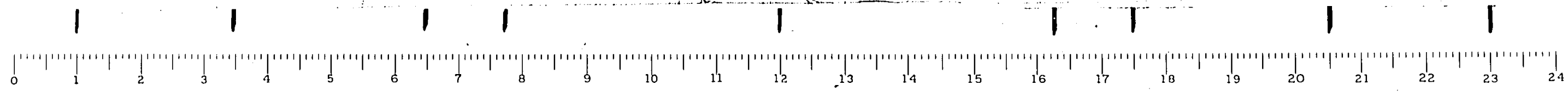
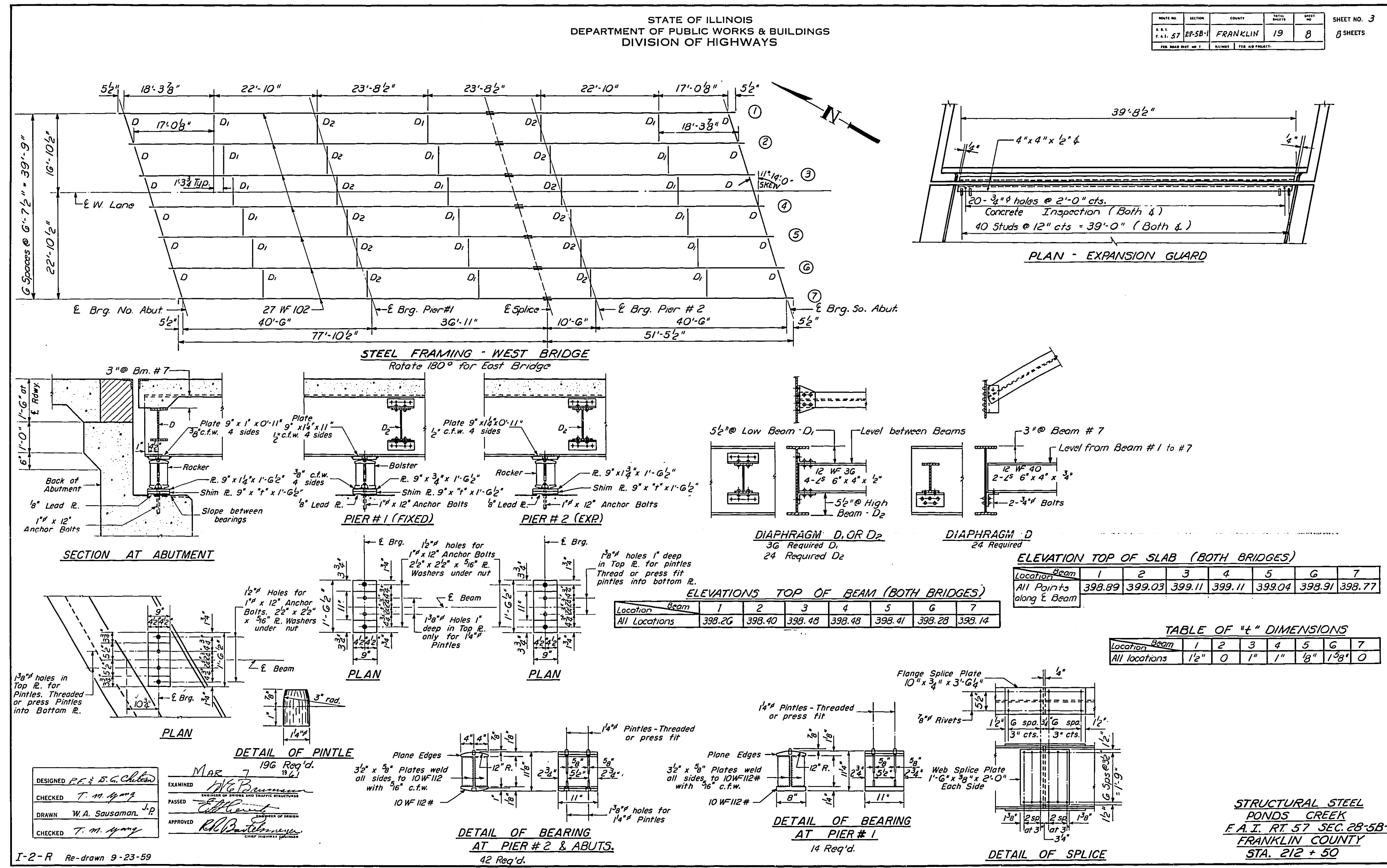
*Weight of bolsters, rockers, bearing plates, lead plates, shim plates and anchor bolts are included in quantity of Structural Steel, Est. No. 45,604

SUPERSTRUCTURE
PONDS CREEK
F.A.I. RT-57 SEC. 28-58-1
FRANKLIN COUNTY
STA. 212 + 50



STATE OF ILLINOIS
DEPARTMENT OF PUBLIC WORKS & BUILDINGS
DIVISION OF HIGHWAYS

DATE	SECTION	COUNTY	ROUTE	POST	SHEET NO.
1-2-59	28-58-1	FRANKLIN	19	8	8 SHEETS

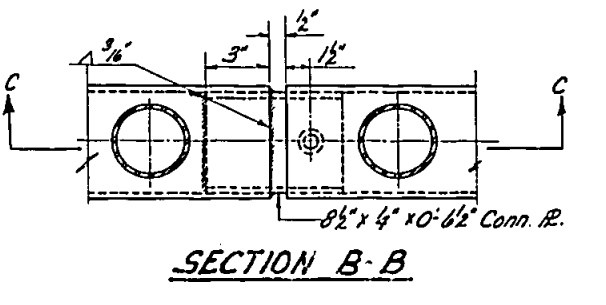
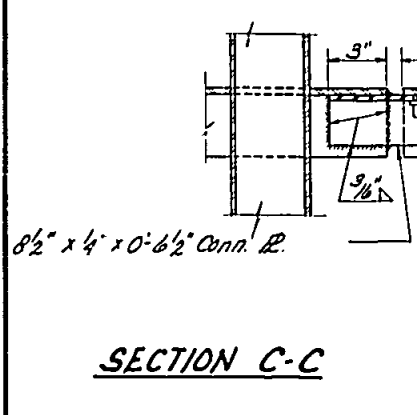
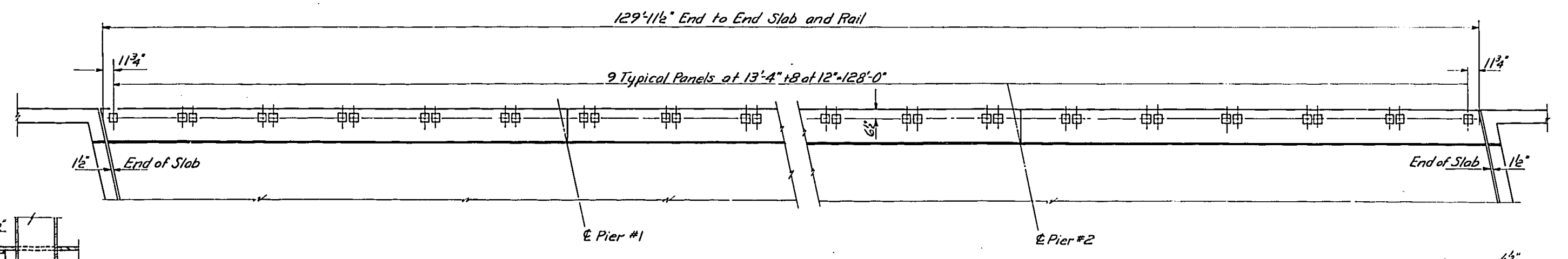
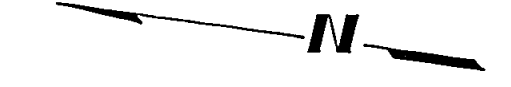


STRUCTURAL STEEL
PONDS CREEK
F.A.T. RT. 57 SEC. 28-58-1
FRANKLIN COUNTY
STA. 212 + 50

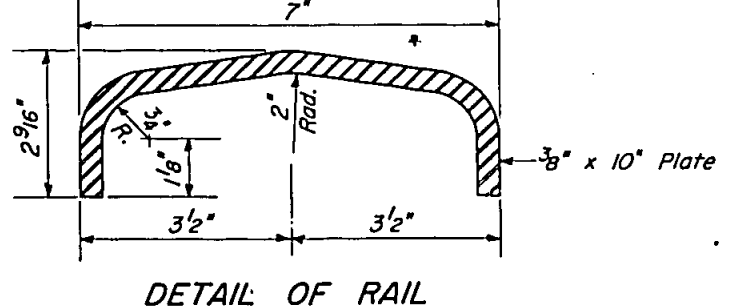
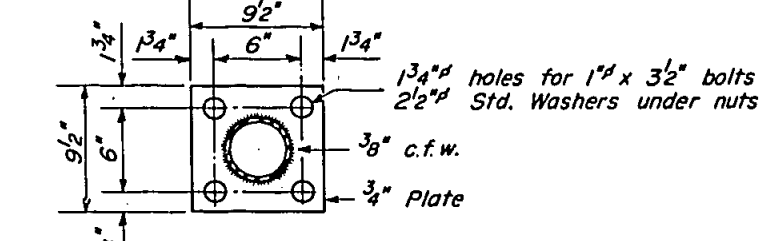
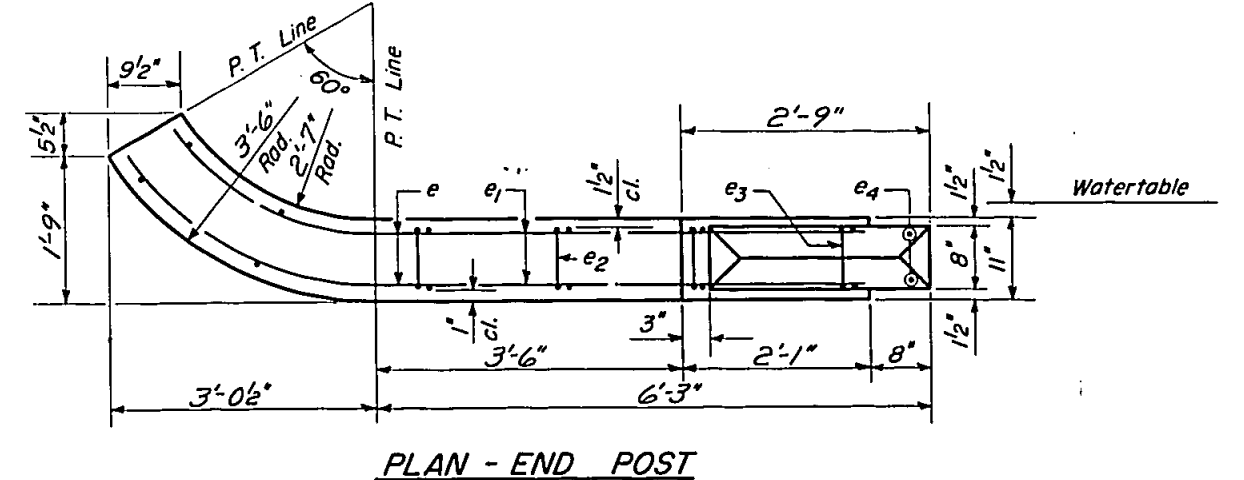
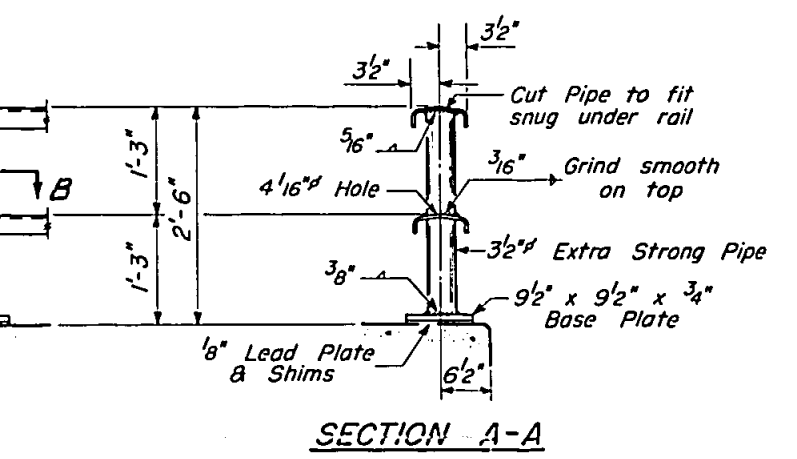
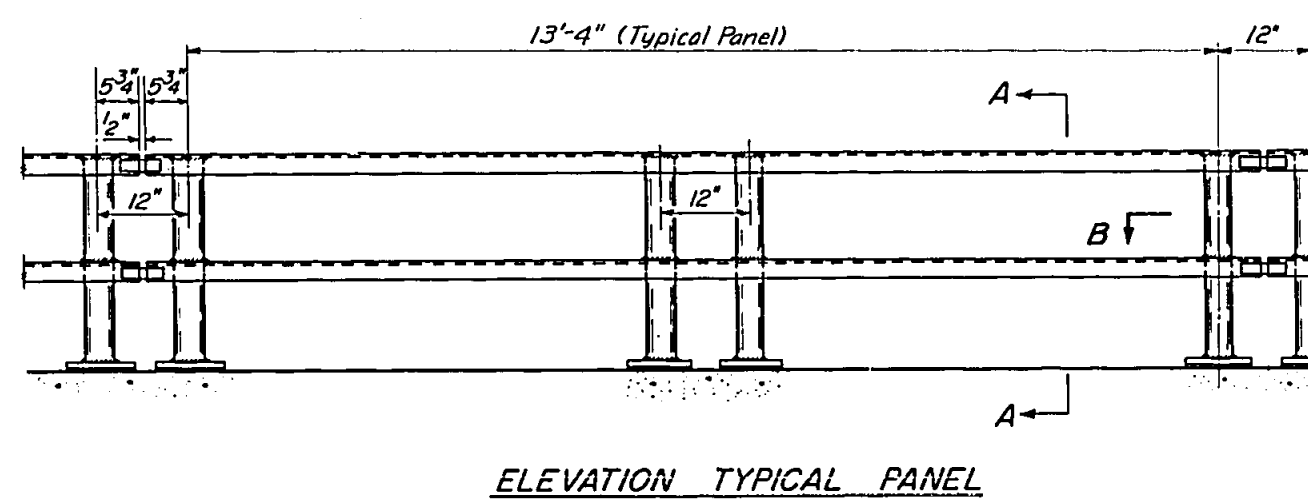
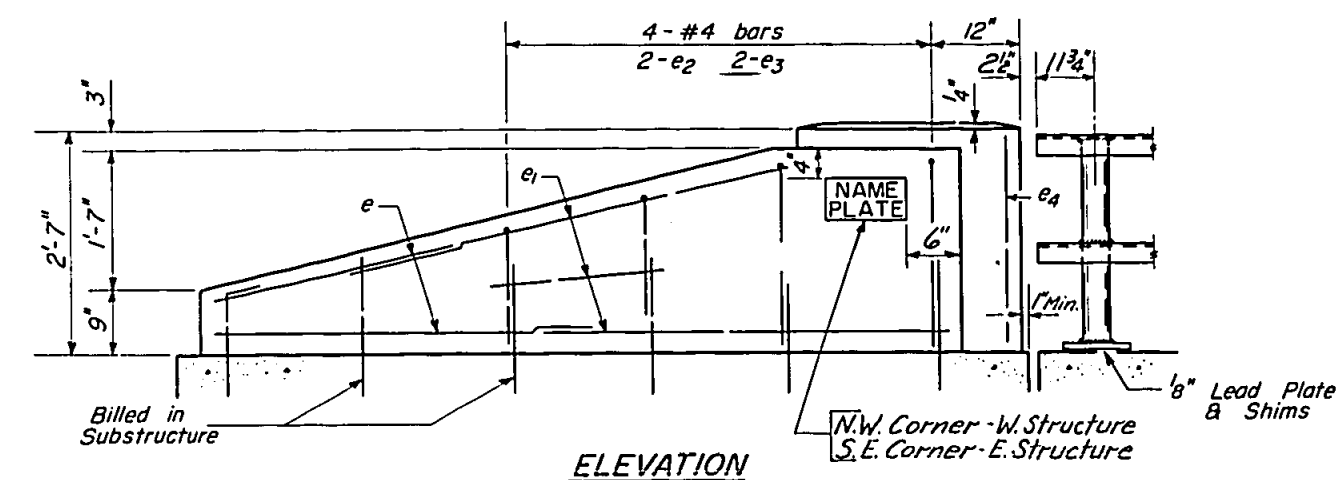
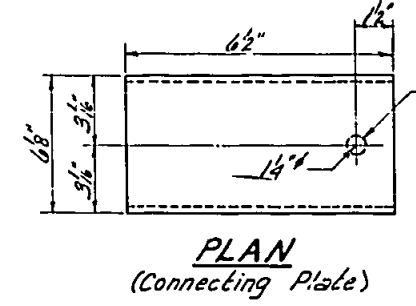
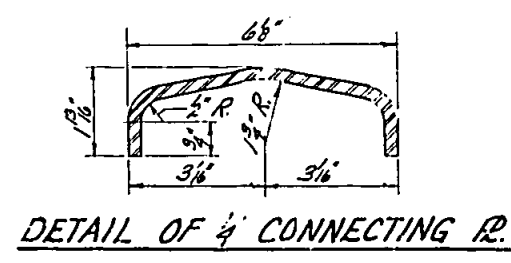
STATE OF ILLINOIS
DEPARTMENT OF PUBLIC WORKS & BUILDINGS
DIVISION OF HIGHWAYS

DATE	SECTION	COUNT	SHEET NO.	TOTAL SHEETS
FEB. 57	28-3B-1	FRANKLIN	13	9

SHEET NO. 4
8 SHEETS



LAYOUT OF RAIL POSTS
Showing East Rail of East Structure
For West Rail Layout Rotate 180°



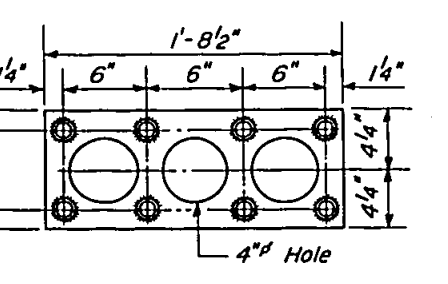
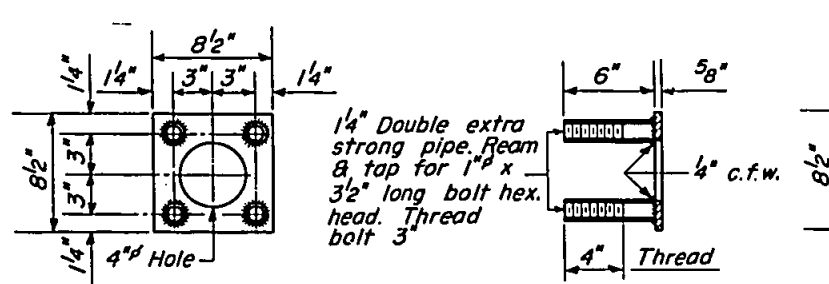
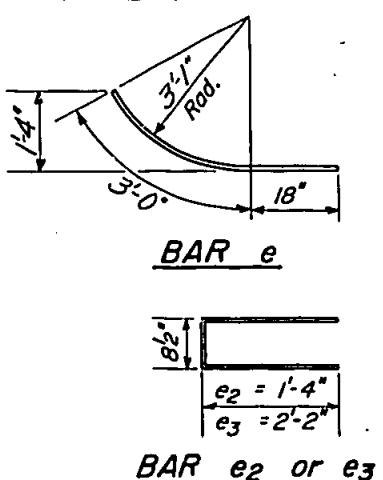
BILL OF MATERIAL (STRUCT.)

Class X Concrete	Cu. Yds.
	4.6
Reinforcement Bars	Lbs.
	370
Metal Handrail	Lin. Ft.
	520

GENERAL NOTES
All End Posts shall be Class X Concrete.
After erection all Bolts and Washers shall be spot painted with one coat of red lead paint before painting handrail with two coats of aluminum paint.
Provide 1- 6" and 2- 1/2" Shimms for 50% of the Posts.

BILL OF REINFORCEMENT

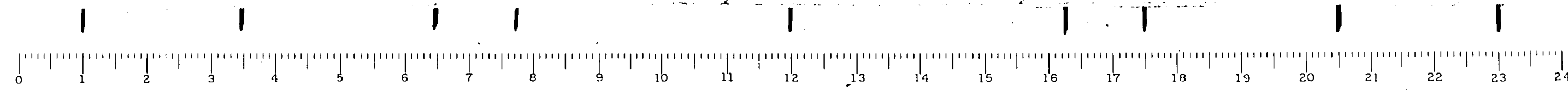
Bar	No.	Size	Length	Shape
e	32	#4	4'-6"	
e1	48	#4	5'-0"	
e2	16	#4	3'-0"	
e3	16	#4	5'-0"	
e4	16	#4	2'-3"	



HANDRAIL DETAILS
POND CREEK
F.A.I. RT. 37 SEC. 28-3B-1
FRANKLIN COUNTY
STA. 212+30

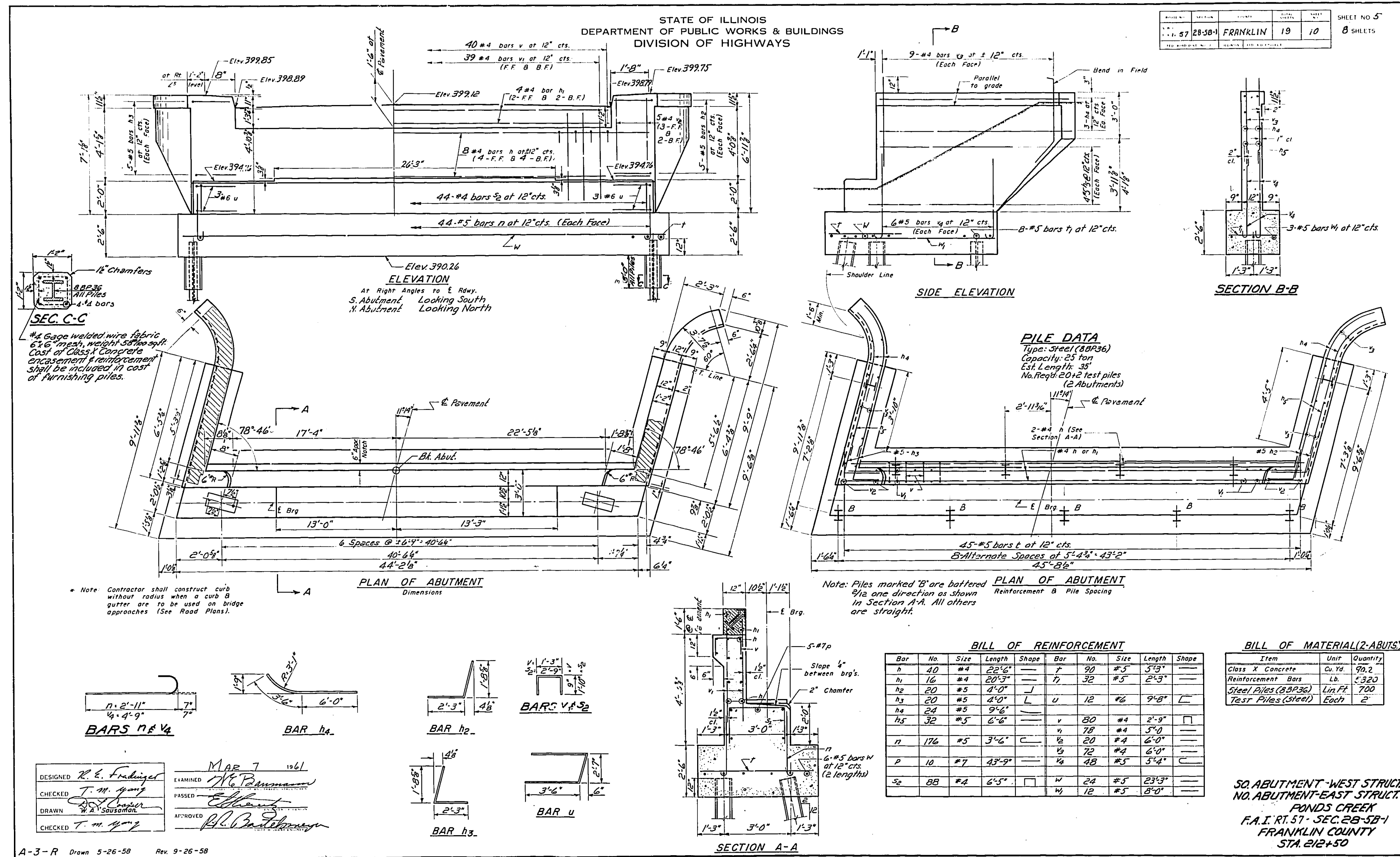
DESIGNED	W.A. Sullivan	EXAMINED	M.A. 7
CHECKED	T.H. Sullivan	PASSED	M.A. Sullivan
DRAWN	W.A. Sullivan	APPROVED	R.R. Sullivan
CHECKED	T.H. Sullivan		

R-6 Re-Drawn 9-15-59
Revised 3-30-61-NUM In GEN. NOTES, changed first note to read "All End Posts shall be Class X Concrete" instead of "All end posts shall be Handrail Concrete."



STATE OF ILLINOIS
DEPARTMENT OF PUBLIC WORKS & BUILDINGS
DIVISION OF HIGHWAYS

SHEET NO. 5
8 SHEETS

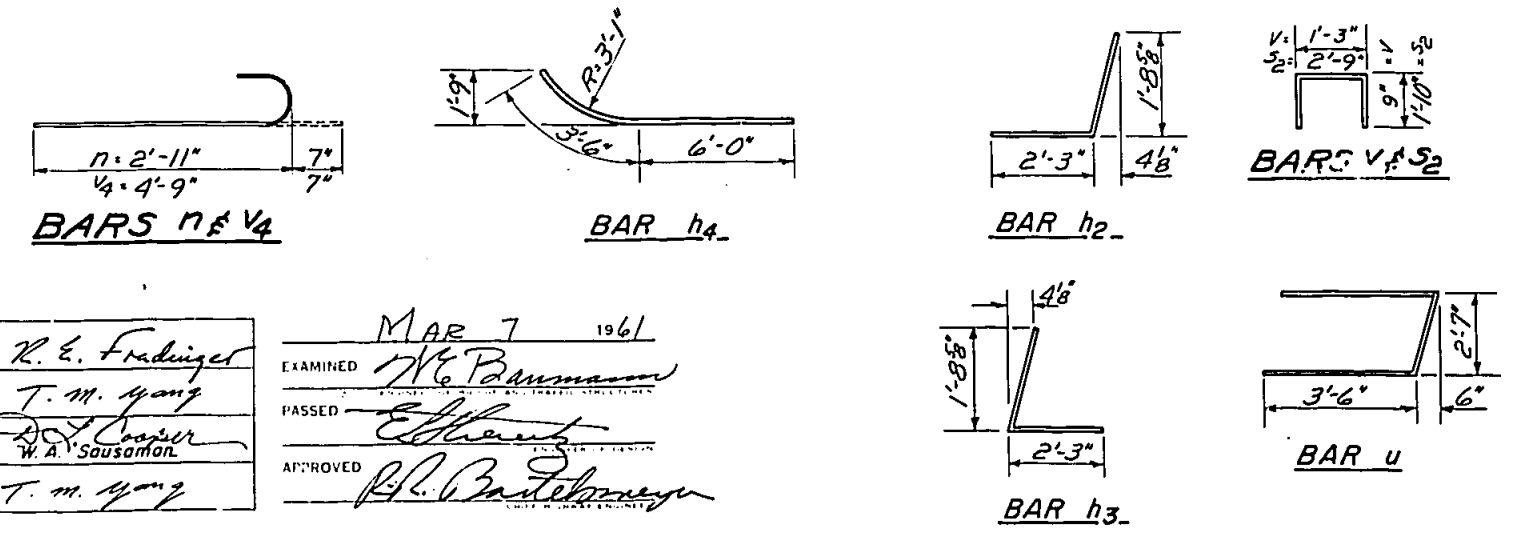


SEC. C-C
#4 Gage welded wire fabric
6x6 mesh, weight 30 lbs per sq ft
Cost of Class X Concrete
Encasement & equipment
shall be included in cost
of furnishing piles.

PILE DATA
Type: Steel (BBP36)
Capacity: 25 ton
Est. Length: 35'
No. High: 20 (2 Abutments)

Note: Contractor shall construct curb
without radius when a curb &
gutter are to be used on bridge
approaches (See Road Plans).

Note: Piles marked 'B' are battered
1/2 one direction as shown
in Section A-A. All others
are straight.



BILL OF REINFORCEMENT

Bar	No.	Size	Length	Shape	Bar	No.	Size	Length	Shape
h	40	#4	22'-6"	—	f	90	#5	5'-9"	—
h1	16	#4	20'-3"	—	7	32	#5	2'-9"	—
h2	20	#5	4'-0"	—	12	46	#6	9'-8"	—
h3	20	#5	4'-0"	—	v	80	#4	2'-9"	—
h4	24	#5	5'-6"	—	4	78	#4	5'-0"	—
h5	32	#5	6'-6"	—	1/2	20	#4	6'-0"	—
h6	176	#5	3'-6"	—	1/2	72	#4	6'-0"	—
p	18	#7	43'-9"	—	1/2	48	#5	5'-4"	—
sp	BB	#4	6'-5"	—	w	24	#5	23'-3"	—
					w	12	#5	8'-0"	—

BILL OF MATERIAL (2-ABUTS)

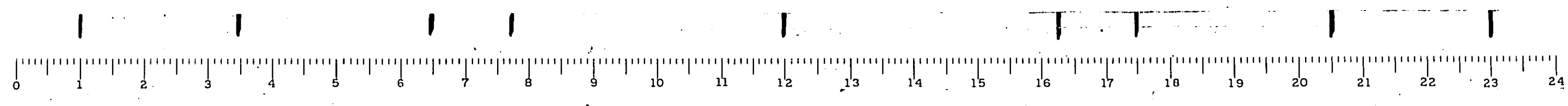
Item	Unit	Quantity
Class X Concrete	Cu. Yd.	90.2
Reinforcement Bars	Lb.	5,320
Steel Piles (BBP36)	Lin. Ft.	700
Test Piles (Steel)	Each	2

SO. ABUTMENT - WEST STRUCT.
NO. ABUTMENT - EAST STRUCT.
POND CREEK
F.A.I. RT. 37 - SEC. 28-5B-1
FRANKLIN COUNTY
STA. 212+50

DESIGNED: R. E. Fruehling
CHECKED: T. M. Young
DRAWN: W. A. Sausonoff
EXAMINED: R. E. Fruehling
PASSED: T. M. Young
APPROVED: R. E. Fruehling

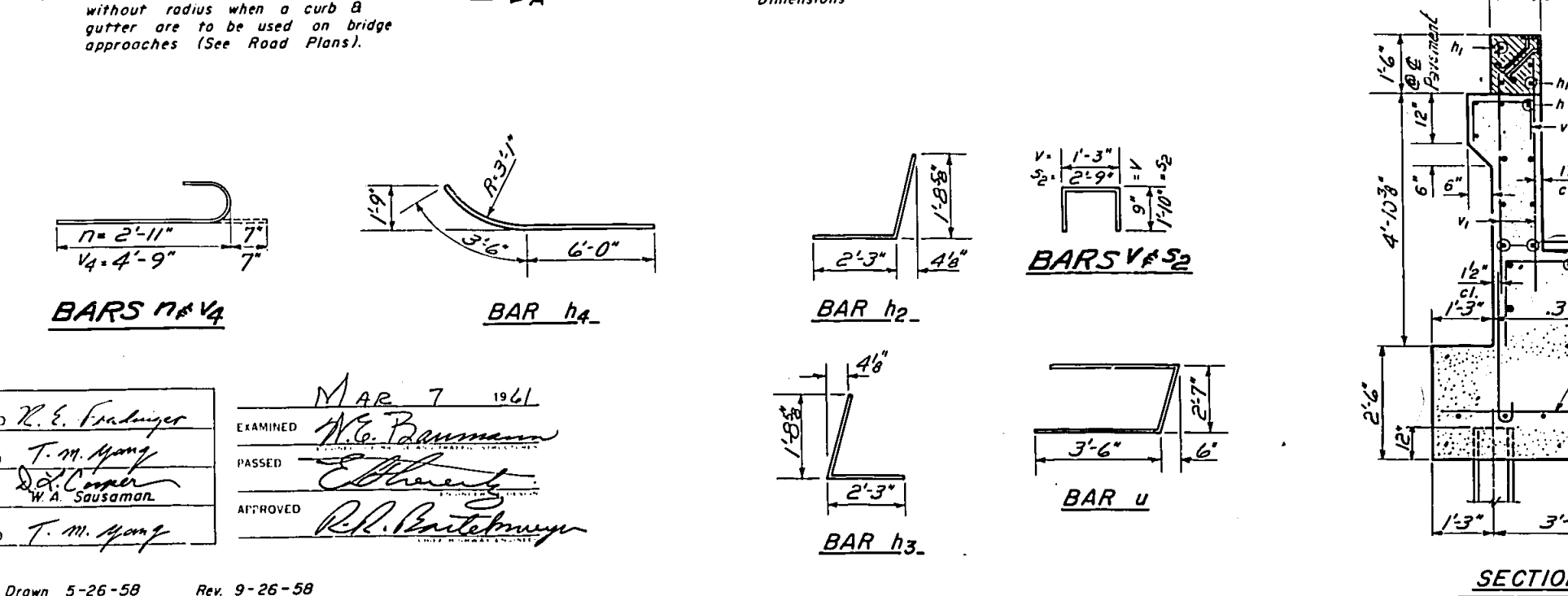
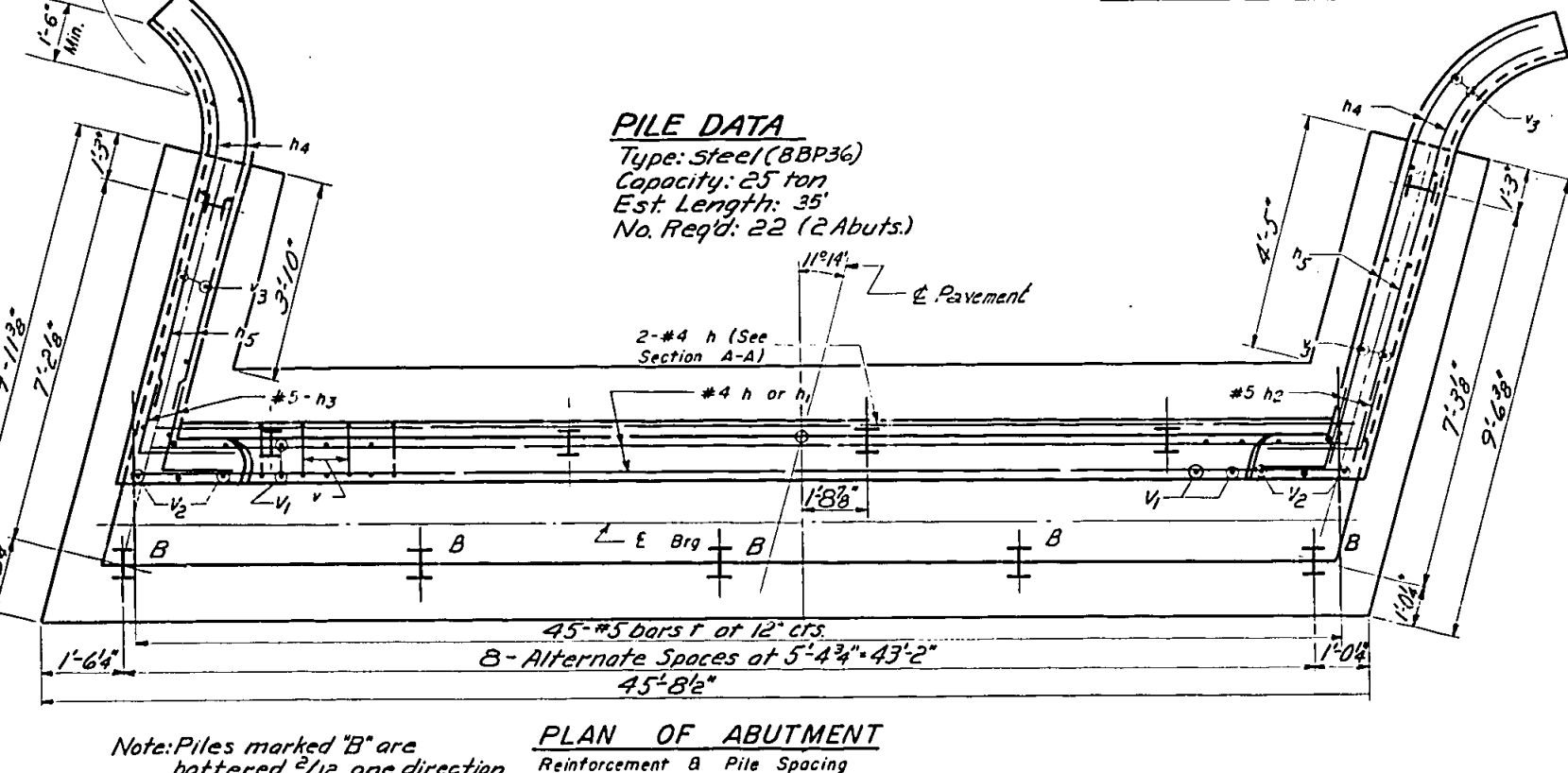
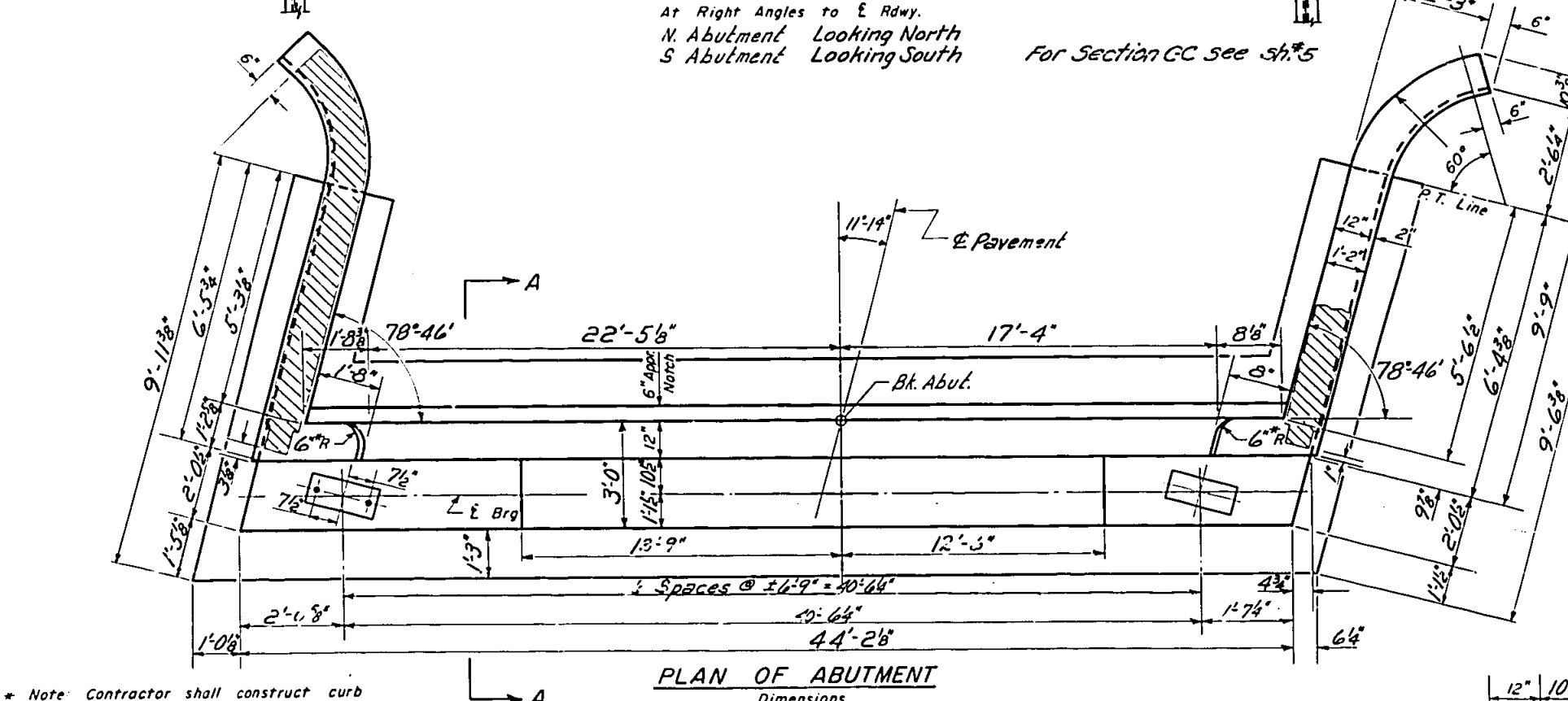
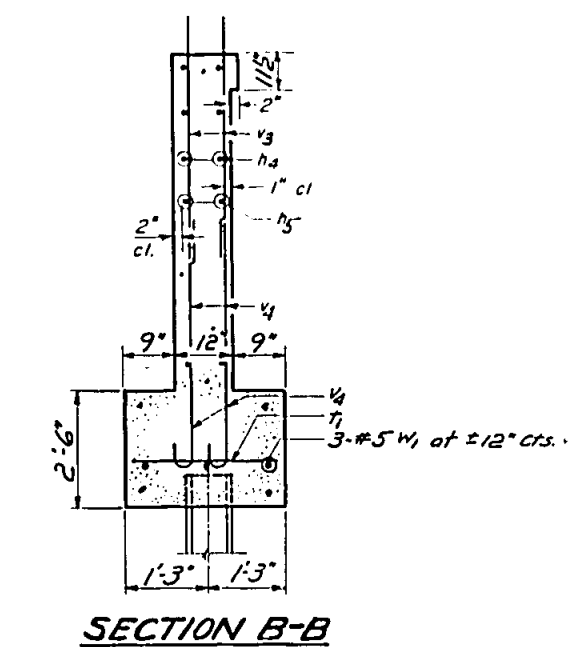
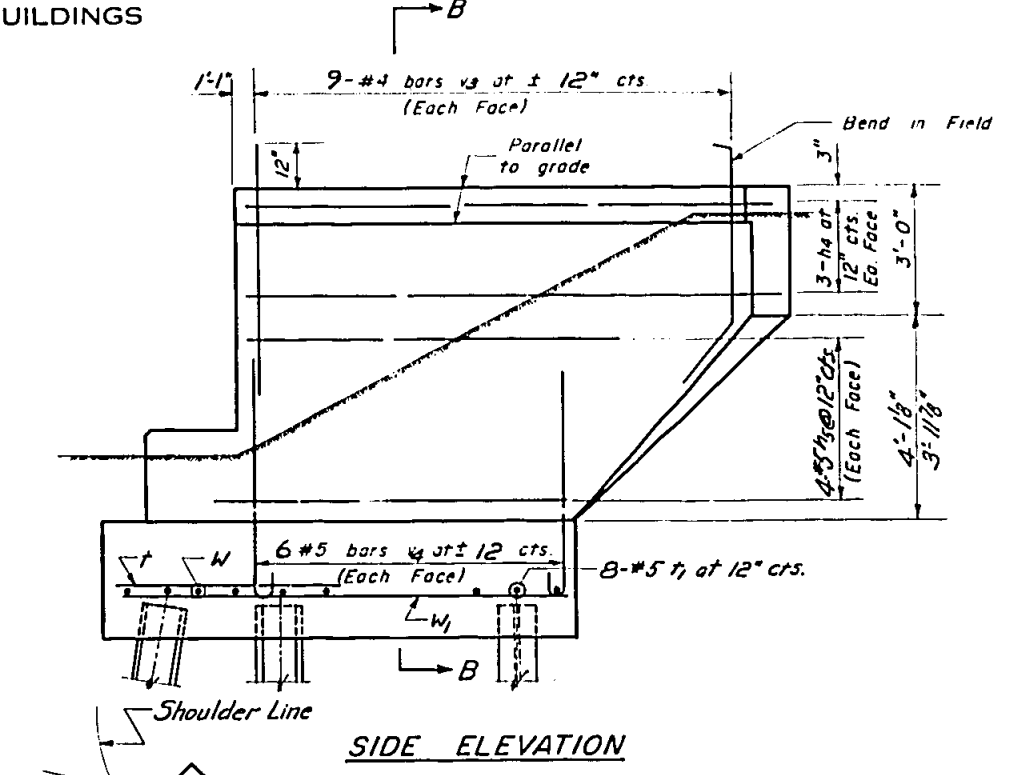
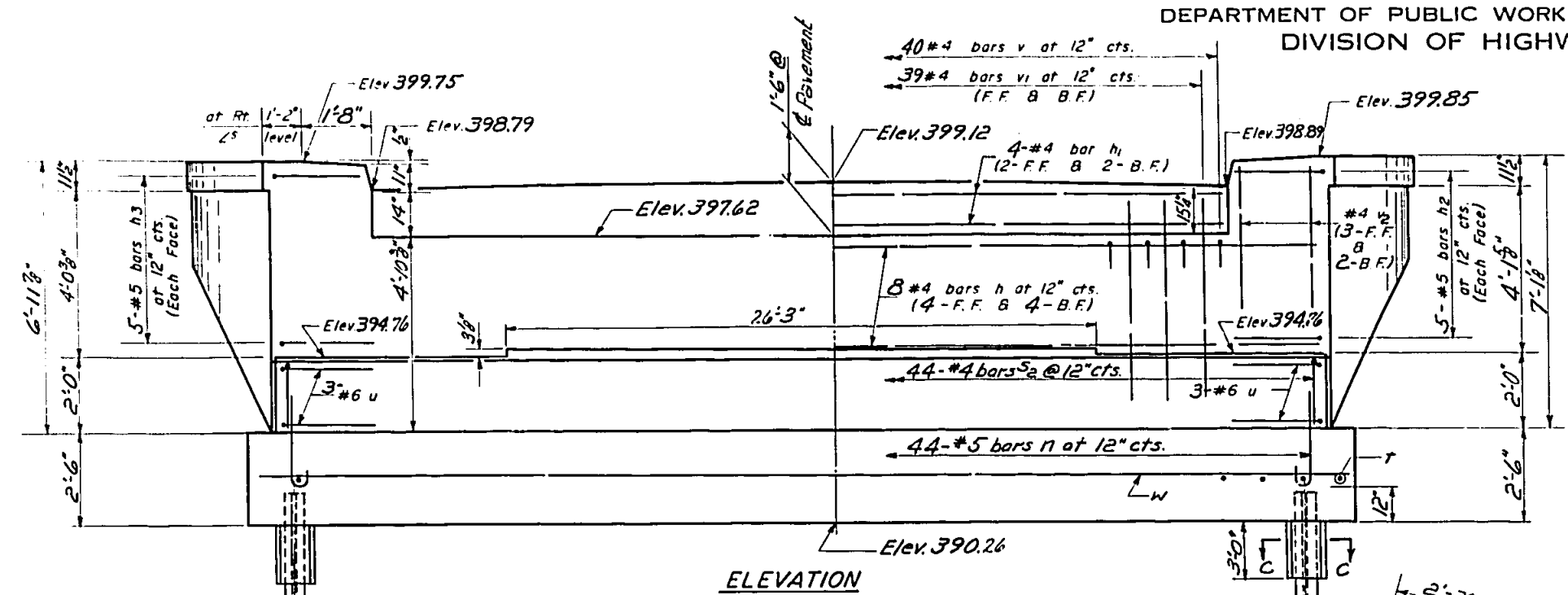
MAR 7 1961

A-3-R Drawn 5-26-58 Rev. 9-26-58



STATE OF ILLINOIS
DEPARTMENT OF PUBLIC WORKS & BUILDINGS
DIVISION OF HIGHWAYS

PROJECT NO.	28-58-1	SECTION	FRANKLIN	DATE	19 11	SHEET NO	6
						TOTAL SHEETS	8



BILL OF REINFORCEMENT

Bar	No.	Size	Length	Shape	Bar	No.	Size	Length	Shape
h	40	#4	22'-4"	—	e	20	#5	5'-3"	—
h1	16	#4	20'-3"	—	e1	32	#5	2'-3"	—
h2	20	#5	4'-0"	J	u	12	#6	9'-8"	L
h3	20	#5	4'-0"	L	v	80	#4	2'-9"	—
h4	24	#5	3'-6"	—	w	78	#4	5'-0"	—
h5	32	#5	6'-6"	—	x	20	#4	6'-0"	—
n	176	#5	3'-6"	—	y	72	#4	6'-0"	—
p	10	#7	43'-9"	—	z	48	#5	5'-4"	—
s2	88	#4	6'-5"	—	w	24	#5	23'-3"	—
					x	12	#5	8'-0"	—

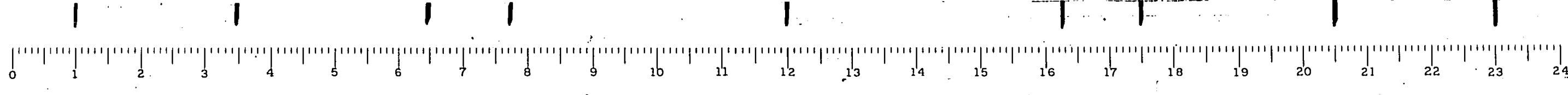
BILL OF MATERIAL (2 ABUTS)

Item	Unit	Quantity
Class X Concrete	Cu Yd.	79.2
Reinforcement Bars	Lb.	5820
Steel Piles (BBP36)	Lin Ft.	770

DESIGNED: *E. E. Vanduser*
 CHECKED: *T. M. Jones*
 DRAWN: *S. J. Safferman*
 EXAMINED: *H. G. P. [Signature]*
 PASSED: *[Signature]*
 APPROVED: *R. B. [Signature]*

MAR 7 1961

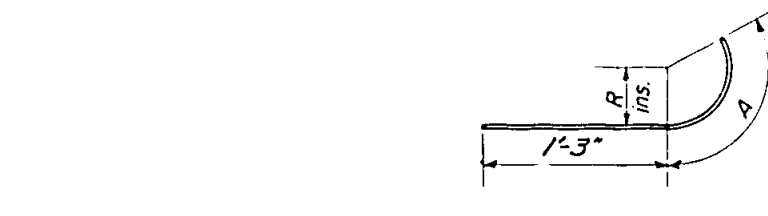
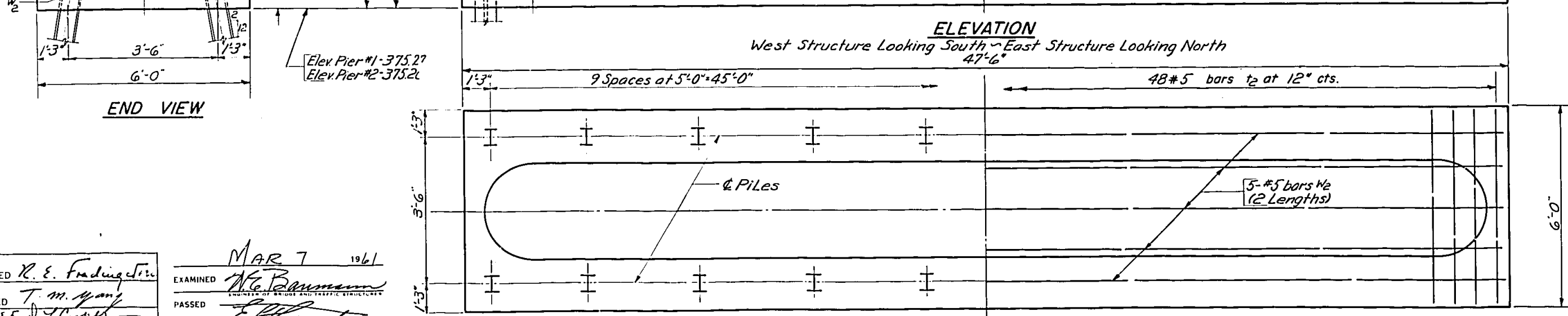
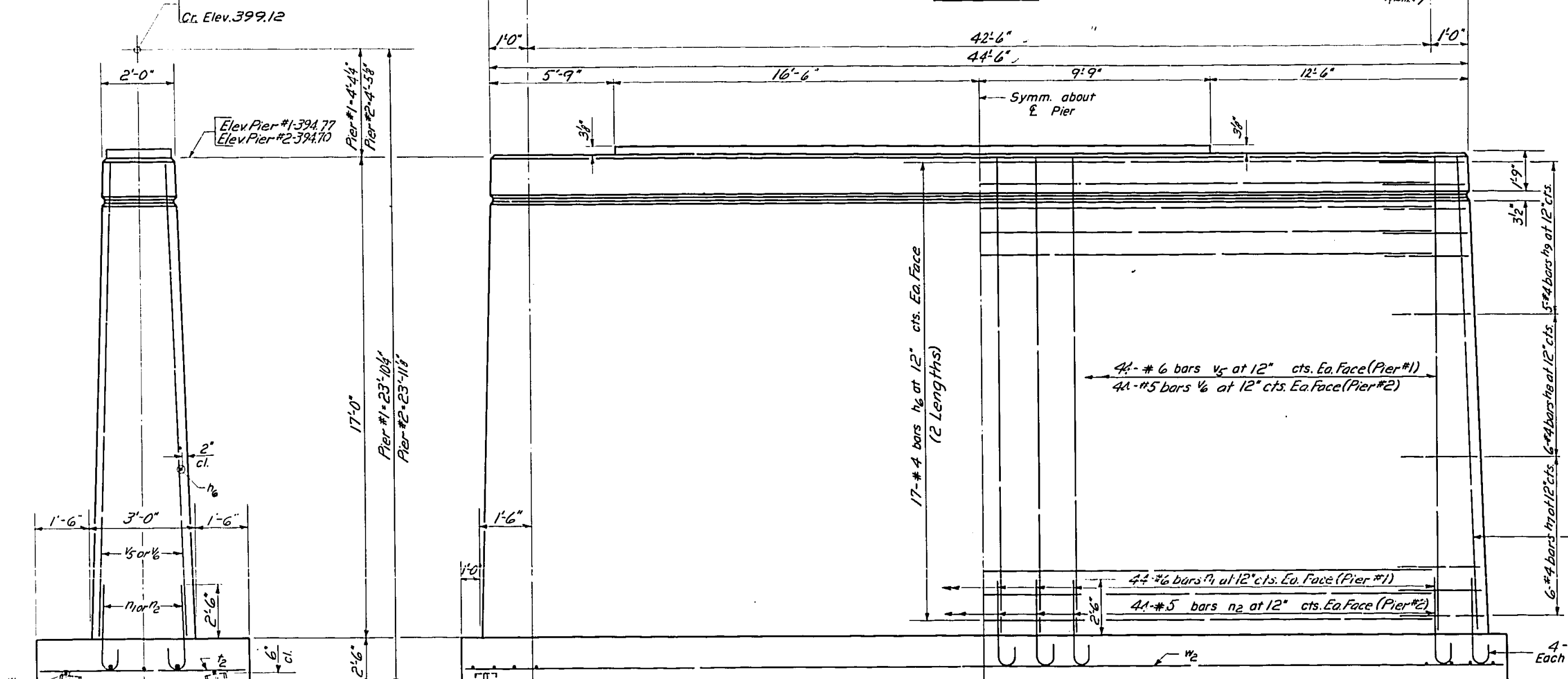
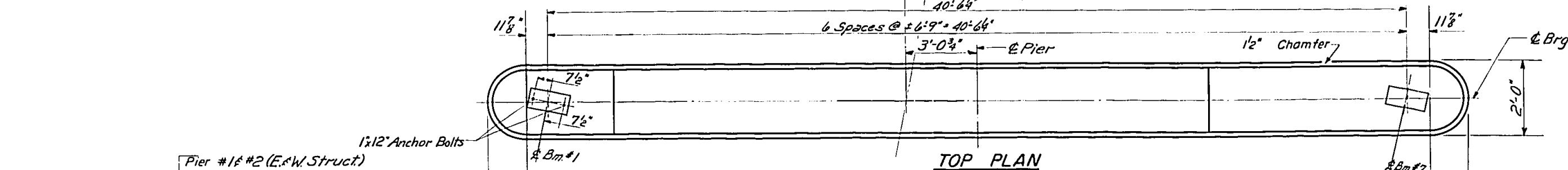
A-3-R Draw 5-26-58 Rev. 9-26-58



NO. ABUTMENT-WEST STRUCT.
 SO. ABUTMENT-EAST STRUCT.
 FONDS CREEK
 F.A.I. RT. 57 SEC. 28-58-1
 FRANKLIN COUNTY
 STA. 212+50

STATE OF ILLINOIS
DEPARTMENT OF PUBLIC WORKS & BUILDINGS
DIVISION OF HIGHWAYS

PROJECT NO.	DISTRICT	COUNTY	TOTAL SHEETS	SHEET NO.
57	28-58	FRANKLIN	19	7
SHEETS				

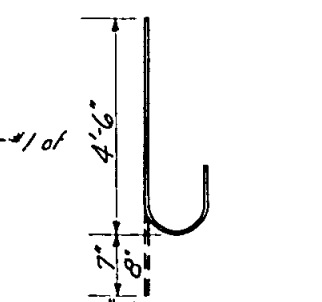


Bar	R	A
h7	7/8"	2'-6"
h8	1'-1"	2'-2"
h9	1"	2'-0"

NOTCH DETAIL

DETAIL OF BARS
h7, h8 & h9

PILE DATA
Type: Steel Piles (3 BP36)
Capacity: 25 tons
Cut Length: 12'
No. Required: 79 + 1 Test Pile @ Sta. #1 of West Bridge



BAR #1 & #2

BILL OF MATERIAL - 4 PIERS

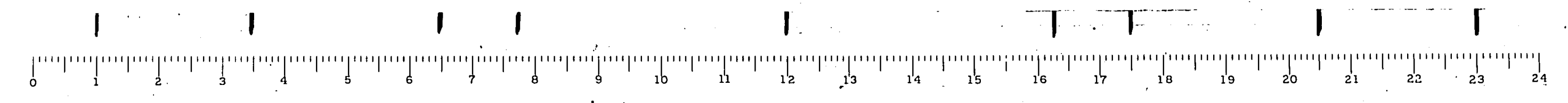
Bar	No.	Size	Length	Shape
h6	272	#4	2'-0"	—
h7	96	#4	3'-9"	—
h8	96	#4	3'-5"	—
h9	80	#4	3'-3"	—
h1	192	#6	5'-2"	C
h2	192	#5	5'-4"	C
h3	192	#5	5'-0"	—
h4	192	#6	16'-9"	—
h5	153	#5	16'-9"	—
h10	40	#5	2'-4"	—
Class A Concrete Cu. Yds. 385.2				
Reinforcement Bars Lbs. 17,490				
Steel Piles (3BP36) Lin. Ft. 1422				
Test Piles (Steel) Each 1				

PIERS #1 & #2
PONDS CREEK
R.A.I. RT 57 SEC. 28-3B-1
FRANKLIN COUNTY
STA. 212+50

DESIGNED *R. E. Fudger, Jr.*
CHECKED *T. M. Gandy*
DRAWN *W. A. Gausman*
CHECKED *T. M. Gandy*

MAR 7 1961
EXAMINED *R. B. ...*
PASSED *...*
APPROVED *...*

P-1 Re-drawn 7-21-59



STATE OF ILLINOIS
DEPARTMENT OF PUBLIC WORKS & BUILDINGS
DIVISION OF HIGHWAYS

COUNTY Franklin				COUNTY Franklin			
Boring No.	Station	Offset	Surface Water El.	Boring No.	Station	Offset	Surface Water El.
1	21125	181.14	376.7	2	21125	232.02	376.2
Ground Surface	376.7	0	Groundwater El. at Completion	Ground Surface	376.2	0	Groundwater El. at Completion
			After 24 hours				After 24 hours
			380.5				379.2
Medium and moist grey clay loam A-6(8)	8	0.7	B	11	0.5	P	18
Medium and wet brown sandy loam	11	0.5	P	18			
Medium stiff and moist grey silty clay A-6(10-11)	9	1.5	P	20			
Medium stiff and moist brown with grey streaks silty clay A-6(12)	9	1.7	S	24			
Stiff and moist grey mottled brown clay A-7-6(13-15)	8	2.5	B	21			
Medium to soft and moist to very moist grey mottled brown silty clay A-6(11-12)	4	0.9	B	25			
4	0.9	B	21				
(see next column)							
Loose and wet brown fine sand	10	1.8	B	21			
Stiff and dry grey mottled brown clay to silty clay A-6(12)	9	1.8	B	19			
Stiff and moist grey clay A-7-6(13-14)	10	1.8	S	24			
Medium stiff and moist grey silty clay A-6(11-12)	8	1.8	B	21			
Bottom of Hole = 36.5 feet							
Notes: Sandstone was cored from 29.5 feet. Hole was washed to obtain sample between 26.0' and 27.5 feet. During drilling operation it appeared that free water was encountered at 15.0 feet.							
Medium and moist grey silty clay to clay loam A-6(8)	9	0.9	B	20			

COUNTY Franklin				COUNTY Franklin			
Boring No.	Station	Offset	Surface Water El.	Boring No.	Station	Offset	Surface Water El.
3	21121	231.14	376.2	4	21125	181.14	376.7
Ground Surface	376.2	0	Groundwater El. at Completion	Ground Surface	376.7	0	Groundwater El. at Completion
			After 24 hours				After 24 hours
			379.2				380.5
Soft and wet brown sandy loam	28	0.5	P	21			
Medium stiff and damp grey mottled brown silty clay loam A-6(8)	10						
Medium stiff and moist grey mottled brown silty clay A-6(11-12)	12	2.2	B	19			
Stiff and moist grey mottled brown silty clay to clay A-7-6(13)	7	1.4	B	21			
Medium and very moist grey mottled brown clay loam A-6(8)	4	0.9	B	21			
Medium and moist grey mottled brown silty clay to clay A-6(11-12)	6	1.3	B	27			
(see next column)							
Stiff and moist brown clay loam A-6(7-8)	8	1.3	P	22			
Stiff and moist grey and brown sandstone	10						
Medium soft and dry medium grained sandstone (100% Recovery)	8	1.4	B	22			
Stiff and moist grey mottled brown silty clay A-6(11-12)	8	1.7	B	23			
Medium and moist grey mottled brown silty clay A-6(11)	8	0.9	B	26			
Medium and moist grey mottled brown silty clay loam A-6(10)	6	0.9	B	23			
Bottom of Hole = 36.5 feet							
Notes: Sandstone was cored from 29.5 feet. Hole was washed to obtain sample between 21.0 feet to 29.5 feet. During drilling operation, it appeared that free water was encountered at 15.0 feet.							
Medium stiff and very moist to wet brown sandy clay loam to sandy loam	21	1.2	B	16			

COUNTY Franklin				COUNTY Franklin			
Boring No.	Station	Offset	Surface Water El.	Boring No.	Station	Offset	Surface Water El.
5	21250	281.28	376.4	6	21128	181.14	376.4
Ground Surface	376.4	0	Groundwater El. at Completion	Ground Surface	376.4	0	Groundwater El. at Completion
			After 24 hours				After 24 hours
			379.1				380.5
Medium and wet grey and brown sandy loam	11	0.2	P	20			
Soft and moist medium grained grey sandstone	11	0.5	P	20			
Very stiff and slightly moist grey silty loam A-6(8)	9	2.5	B	20			
Medium stiff and moist grey mottled brown silty clay A-6(12)	8	0.8	B	27			
Medium stiff and moist bluish grey to grey mottled brown silty clay loam A-6(9-10)	11	2.3	B	21			
Soft and wet grey mottled brown clay loam A-6(7-8)	6	0.4	B	22			
(see next column)							
Well graded and wet grey mottled brown fine sand	11	0.5	P	21			
Stiff and slightly moist grey silty clay loam A-6(9)	11	2.0	P	21			
Medium stiff to very stiff and slightly moist grey mottled brown silty clay A-6(10-11)	16	1.9	B	24			
Very stiff and moist grey mottled brown clay A-7-6(14)	11	2.1	B	12			
Medium and moist grey mottled brown silty clay A-6(10)	6	0.9	B	22			
Bottom of Hole = 40.0 feet							
Notes: Sandstone was cored from 30.0 feet to 40.0 feet. Hole was washed to obtain sample between 26.0 feet and 29.5 feet. During drilling operation, it appeared that free water was encountered at 17.0 feet.							
Medium and wet grey mottled brown silty clay loam to clay loam A-6(8)	5	0.7	B	14			
(see next column)							

DESIGNED: B.G.G. EXAMINED: M.A.E. 7 1961
 CHECKED: T.M. 4/27/61 PASSED: [Signature]
 DRAWN: [Signature] APPROVED: [Signature]

NOTE:
 N - Standard Penetration Test - Blows per foot to drive 2" O.D. Split Sponon Sampler with 140# Hammer.
 Cu - Unconfined Compressive Strength - psi
 W - Water Content - percentage of oven dry weight %
 Type Failure:
 B - Beige Failure
 S - Shear Failure
 E - Estimated Value

BORINGS
 PONDS CREEK
 F.A.I. RL 57 SEC 28-58-1
 FRANKLIN COUNTY
 STA. 212-50

