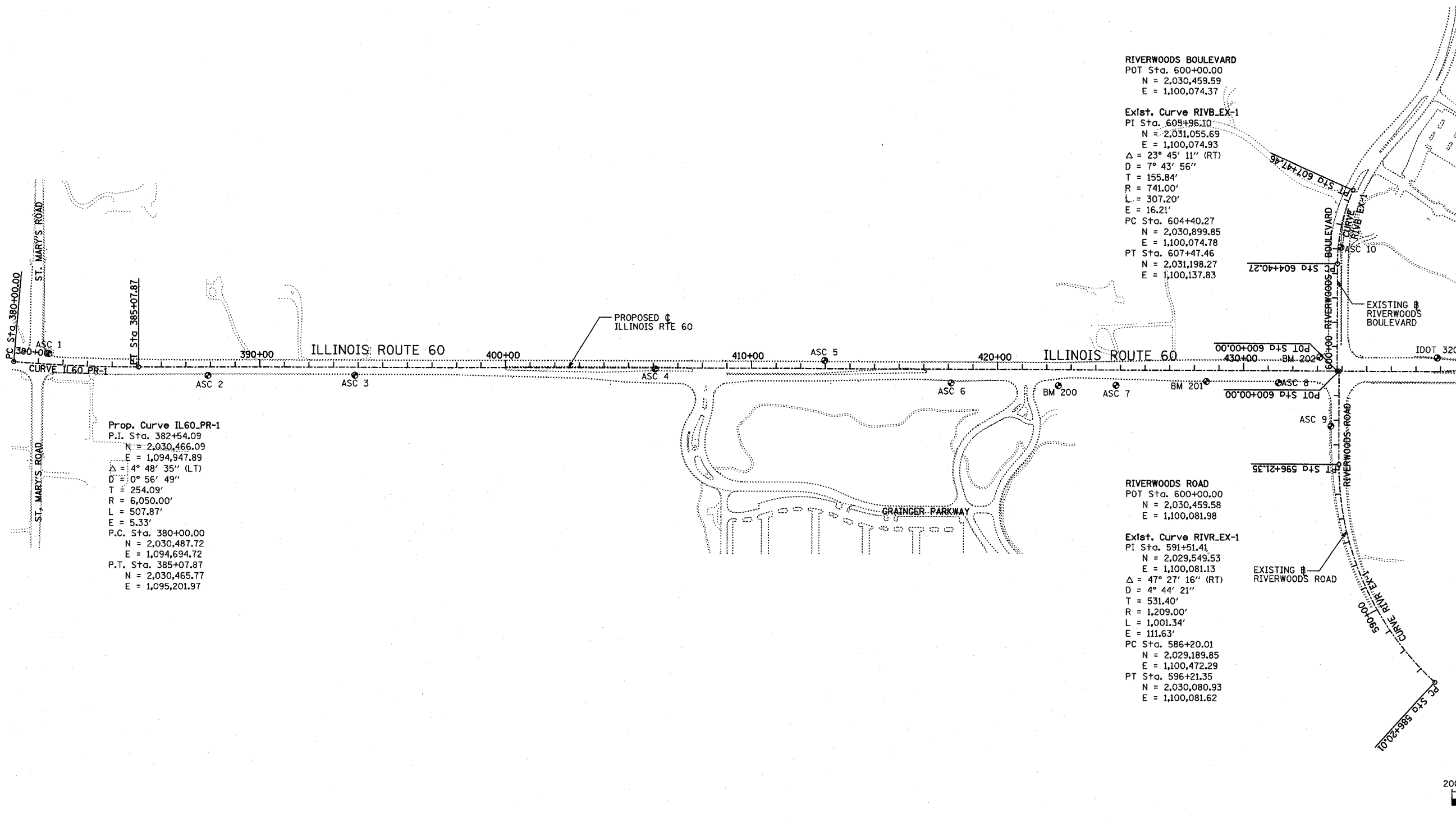


F.A.P. RTE.	SECTION	COUNTY	TOTAL SHEETS	SHEET NO.
335	119R-2	LAKE	439	37
STA. 432+83.12		TO STA. 470+56.84		
FED. ROAD DIST. NO.		ILLINOIS FED. AID PROJECT		

60B01



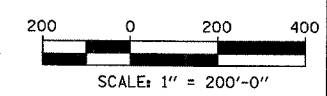
MATCHLINE IL RTE 60 STA. 439+00.00 - NEXT SHEET



Prop. Curve IL60_PR-1
 P.I. Sta. 382+54.09
 N = 2,030,466.09
 E = 1,094,947.89
 $\Delta = 4^\circ 48' 35''$ (LT)
 $D = 10^\circ 56' 49''$
 T = 254.09'
 R = 6,050.00'
 L = 507.87'
 E = 5.33'
 P.C. Sta. 380+00.00
 N = 2,030,487.72
 E = 1,094,694.72
 P.T. Sta. 385+07.87
 N = 2,030,465.77
 E = 1,095,201.97

RIVERWOODS BOULEVARD
 POT Sta. 600+00.00
 N = 2,030,459.59
 E = 1,100,074.37
 Exst. Curve RIVB_EX-1
 PI Sta. 605+96.10
 N = 2,031,055.69
 E = 1,100,074.93
 $\Delta = 23^\circ 45' 11''$ (RT)
 $D = 7^\circ 43' 56''$
 T = 155.84'
 R = 741.00'
 L = 307.20'
 E = 16.21'
 PC Sta. 604+40.27
 N = 2,030,899.85
 E = 1,100,074.78
 PT Sta. 607+47.46
 N = 2,031,198.27
 E = 1,100,137.83

RIVERWOODS ROAD
 POT Sta. 600+00.00
 N = 2,030,459.58
 E = 1,100,081.98
 Exst. Curve RIVR_EX-1
 PI Sta. 591+51.41
 N = 2,029,549.53
 E = 1,100,081.13
 $\Delta = 47^\circ 27' 16''$ (RT)
 $D = 4^\circ 44' 21''$
 T = 531.40'
 R = 1,209.00'
 L = 1,001.34'
 E = 111.63'
 PC Sta. 586+20.01
 N = 2,029,189.85
 E = 1,100,472.29
 PT Sta. 596+21.35
 N = 2,030,080.93
 E = 1,100,081.62



REVISIONS	
NAME	DATE

ILLINOIS DEPARTMENT OF TRANSPORTATION
 ILLINOIS RTE 60 OVER I-94
 ALIGNMENT AND TIES
 SHEET 1 OF 2
 SCALE: 1"=200'-0"
 DATE: MAY 8, 2007
 DRAWN BY: ASC
 CHECKED BY: MPG

TYLIN INTERNATIONAL

5/7/2007 8:42:46 AM