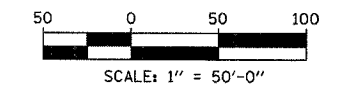
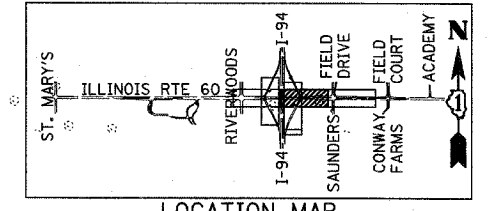
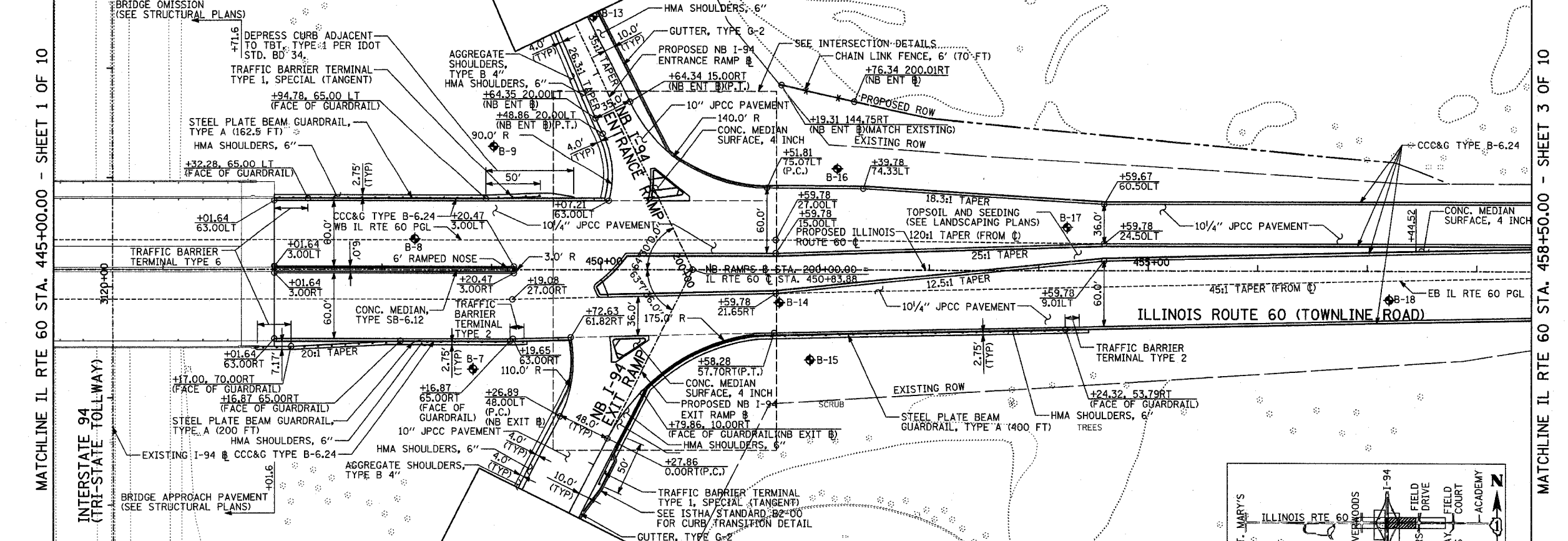


F.A.P. RTE.	SECTION	COUNTY	TOTAL SHEETS	SHEET NO.
335	119R-2	LAKE	439	56
STA. 432+83.12		TO STA. 470+56.84		
FED. ROAD DIST. NO.		ILLINOIS FED. AID PROJECT		

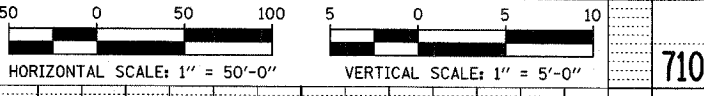
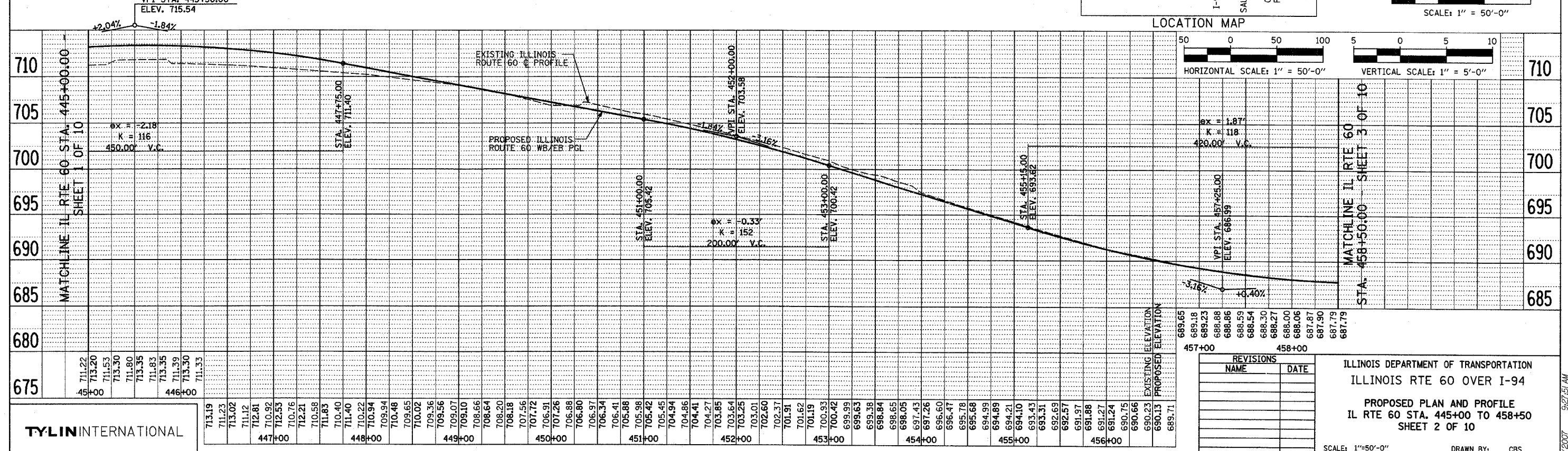
60B01



MATCHLINE NB I-94 ENTRANCE RAMP STA. 202+50.00 - SHEET 5 OF 10



MATCHLINE NB I-94 EXIT RAMP STA. 197+50.00 - SHEET 5 OF 10



MATCHLINE IL RTE 60 STA. 458+50.00 - SHEET 3 OF 10

TYLIN INTERNATIONAL

REVISIONS	NAME	DATE

ILLINOIS DEPARTMENT OF TRANSPORTATION
ILLINOIS RTE 60 OVER I-94
PROPOSED PLAN AND PROFILE
IL RTE 60 STA. 445+00 TO 458+50
SHEET 2 OF 10

SCALE: 1"=50'-0" DRAWN BY: CBS
DATE: MAY 8, 2007 CHECKED BY: MPG

DATE	
BY	
PLAN	
NOTES	
CHECKED	
DATE	
NO.	

DATE	
BY	
PROFILE	
NOTES	
CHECKED	
DATE	
NO.	