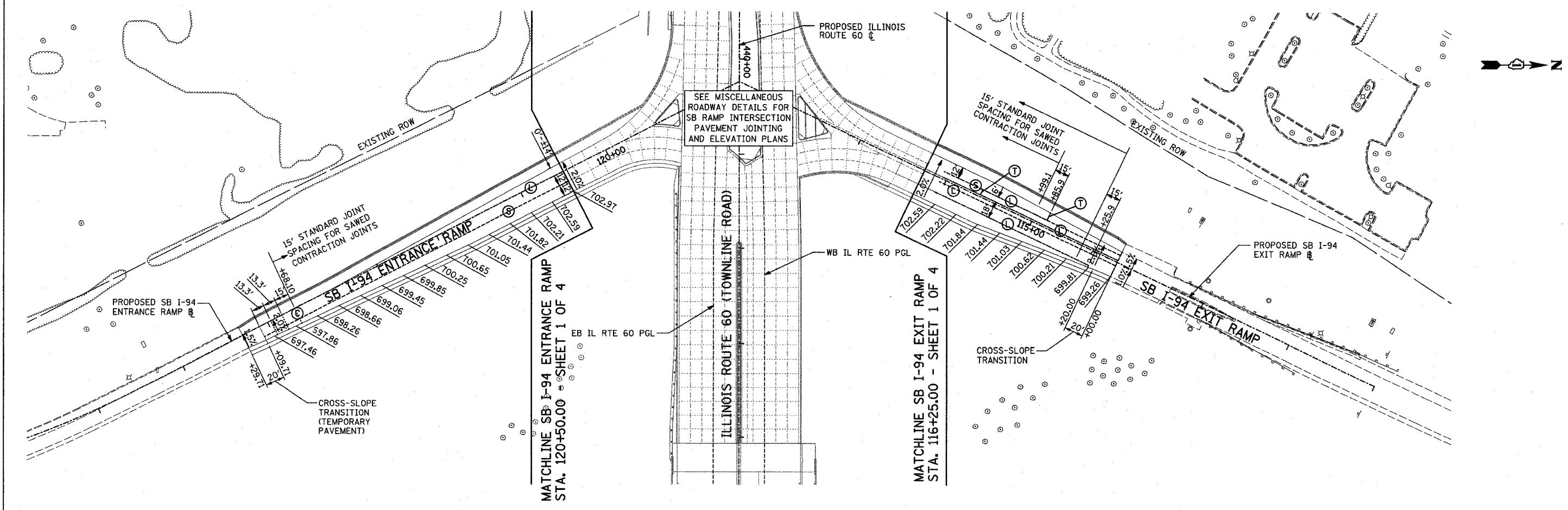


F.A.P. RTE.	SECTION	COUNTY	TOTAL SHEETS	SHEET NO.
335	119R-2	LAKE	439	70
STA. 432+83.12		TO STA. 470+56.84		
FED. ROAD DIST. NO.		ILLINOIS	FED. AID PROJECT	

60B01

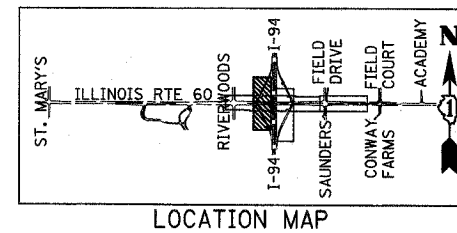
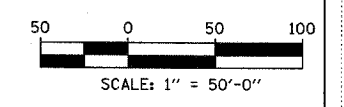


LEGEND

(C)	CONSTRUCTION JOINT WITH NO. 6 DEFORMED TIE BAR (EPOXY COATED), 24" LONG @ 24" C-C, DRILL & GROUT IN PLACE (INCLUDED IN THE COST OF CURB & GUTTER OR MEDIAN)
(S)	SAWED LONGITUDINAL JOINT WITH NO. 6 DEFORMED TIE BAR (EPOXY COATED), 30" LONG @ 30" C-C (INCLUDED IN THE COST OF JPCC PAVEMENT)
(SH)	LONGITUDINAL SHOULDER CONSTRUCTION JOINT WITH NO. 8 DEFORMED TIE BAR (EPOXY COATED), 30" LONG @ 24" C-C, DRILL & GROUT IN PLACE (INCLUDED IN THE COST OF JPCC PAVEMENT)
(L)	LONGITUDINAL CONSTRUCTION JOINT WITH NO. 6 DEFORMED TIE BAR (EPOXY COATED), 30" LONG @ 24" C-C, DRILL & GROUT IN PLACE (INCLUDED IN THE COST OF JPCC PAVEMENT)
(EC)	LONGITUDINAL CONSTRUCTION JOINT WITH NO. 8 DEFORMED TIE BAR (EPOXY COATED), 24" LONG @ 24" C-C, DRILL & GROUT INTO EXISTING PCC BASE COURSE (INCLUDED IN THE COST OF PCC BASE COURSE)
(T)	TRANSVERSE CONSTRUCTION JOINT WITH 1-1/2" DIA. DEFORMED TIE BARS (EPOXY COATED), 18" LONG @ 12" C-C, DRILL & GROUT IN PLACE (INCLUDED IN THE COST OF JPCC PAVEMENT)
(C)	SAWED TRANSVERSE CONTRACTION JOINT WITH SMOOTH DOWEL BARS (EPOXY COATED), 1/2" DIA., 18" LONG @ 12" C-C (INCLUDED IN THE COST OF JPCC PAVEMENT)

NOTES

- ALL ELEVATIONS SHOWN ARE FOR FINISHED GRADE.
- ELEVATIONS ALONG PGL ARE SHOWN AT EVEN +25 STATIONS.



LOCATION MAP

REVISIONS	
NAME	DATE

ILLINOIS DEPARTMENT OF TRANSPORTATION
ILLINOIS RTE 60 OVER I-94
 PAVEMENT JOINTING AND ELEVATION PLAN
 SOUTHBOUND INTERSTATE 94 RAMPS
 SHEET 3 OF 4

SCALE: 1"=50'-0"
 DATE: MAY 8, 2007

DRAWN BY: RTM
 CHECKED BY: MPG

TYLIN INTERNATIONAL

5/17/2007 7:56:56 AM