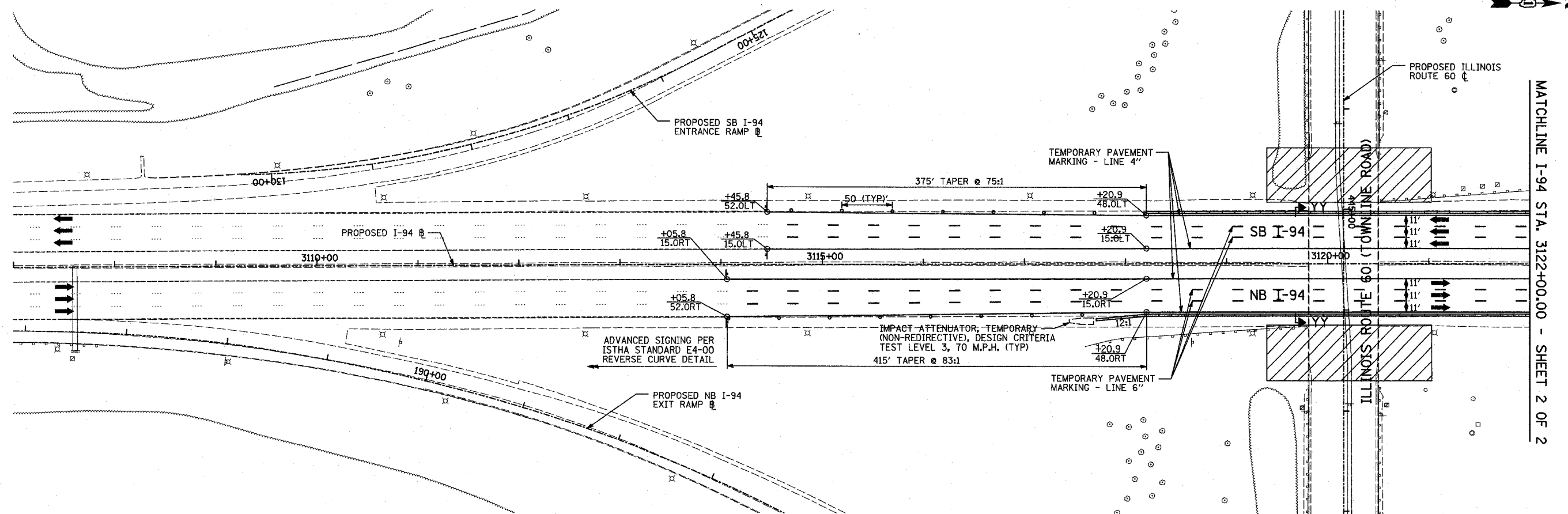


F.A.P. RTE.	SECTION	COUNTY	TOTAL SHEETS	SHEET NO.
335	119R-2	LAKE	439	129
STA. 432+83.12		TO STA. 470+56.84		
FED. ROAD DIST. NO.	ILLINOIS FED. AID PROJECT			

60B01



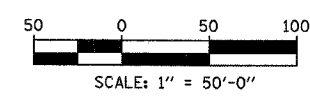
MATCHLINE I-94 STA. 3122+00.00 - SHEET 2 OF 2

LEGEND:

- CONSTRUCTION ZONE
- TEMPORARY PAVEMENT
- TRAFFIC MOVEMENT
- TEMPORARY SIGN (SEE M.O.T. SIGNING LEGEND)
- TYPE II BARRICADES OR DRUMS W/ MONO-DIRECTIONAL STEADY BURNING LIGHT
- TYPE III BARRICADE W/2 FLASHING BIDIRECTIONAL LIGHTS
- TEMPORARY CONCRETE BARRIER
- ARROW BOARD
- M.O.T. APPURTENANCES REMAINING FROM PREVIOUS STAGES

MAINLINE I-94 STAGING NOTES:

1. ADVANCE SIGNING FOR MULTI-LANE WEAVE SHALL FOLLOW ISTHA STANDARD E4-00.
2. OUTER BRIDGE ABUTMENT AND INSIDE PIER CONSTRUCTION MAY NOT OCCUR SIMULTANEOUSLY. A SINGLE WORK ZONE MAY BE ESTABLISHED FOR NORTHBOUND I-94 TRAFFIC. A SIMILAR WORK ZONE WILL BE ALLOWED FOR SOUTHBOUND I-94 TRAFFIC.
3. THE IL-60 BRIDGE WILL BE CONSTRUCTED IN MULTIPLE SUBSTAGES. THE NORTH HALF OF THE BRIDGE WILL BE COMPLETED FIRST FOLLOWED BY THE SOUTH HALF.
4. THIS CONTRACT WILL OVERLAP WITH THE CONSTRUCTION OF THE SOUTHBOUND I-94 (TRI-STATE TOLLWAY) LANES (ISTHA CONTRACT NO. I-07-5221). CONSTRUCTION AND MAINTENANCE OF TRAFFIC SHALL BE COORDINATED WITH ISTHA'S CONTRACTOR.



REVISIONS	
NAME	DATE

ILLINOIS DEPARTMENT OF TRANSPORTATION
 ILLINOIS RTE 60 OVER I-94
 MAINTENANCE OF TRAFFIC PLAN
 MAINLINE INTERSTATE 94
 STAGE 2 - SHEET 1 OF 2

SCALE: 1"=50'-0"
 DATE: MAY 8, 2007

DRAWN BY: RTM
 CHECKED BY: JDF

TYLININTERNATIONAL

05/02/2007 05:09:21 PM