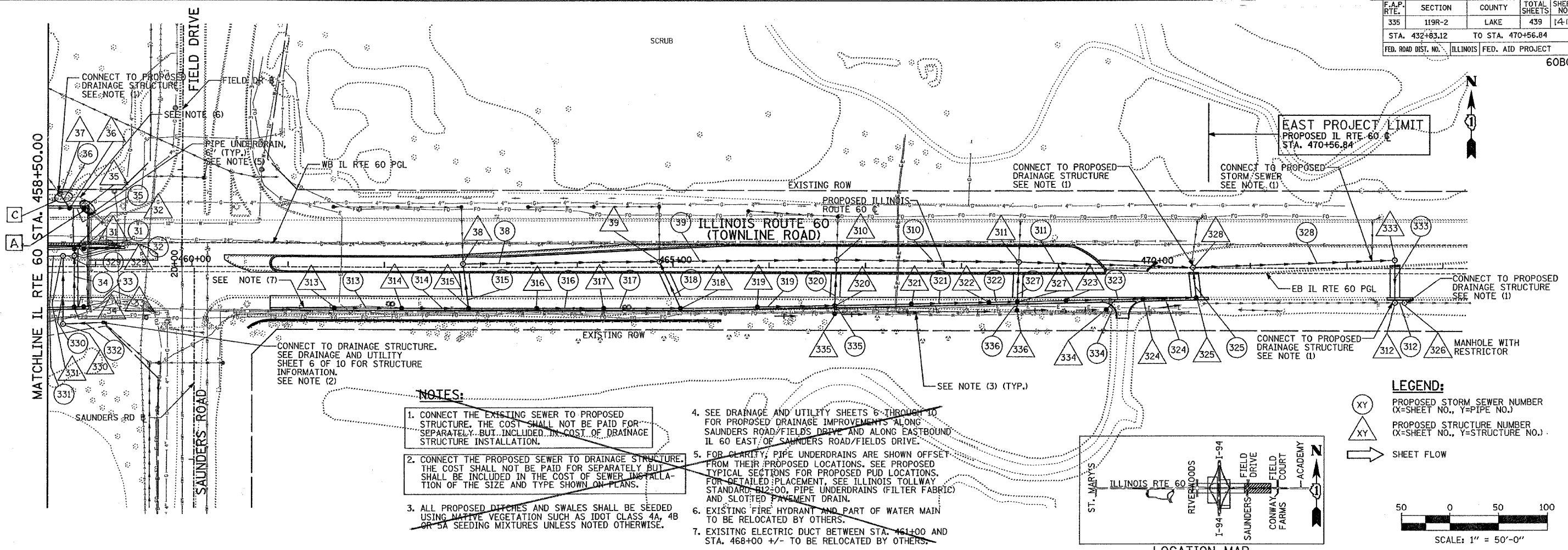


F.A.P. RTE.	SECTION	COUNTY	TOTAL SHEETS	SHEET NO.
335	119R-2	LAKE	439	141C
STA. 432+83.12		TO STA. 470+56.84		
FED. ROAD DIST. NO.		ILLINOIS	FED. AID PROJECT	

60B01

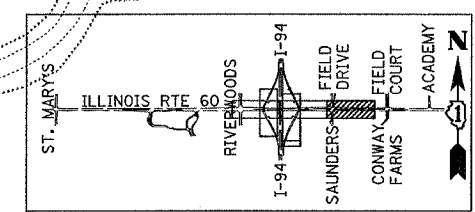
PLAN	DATE
BY	
REVISIONS	
NO.	DESCRIPTION
1	AS SHOWN

PROFILE	DATE
BY	
REVISIONS	
NO.	DESCRIPTION
1	AS SHOWN



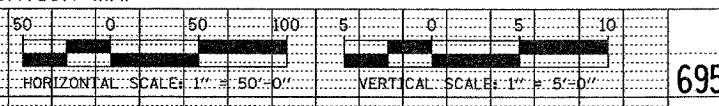
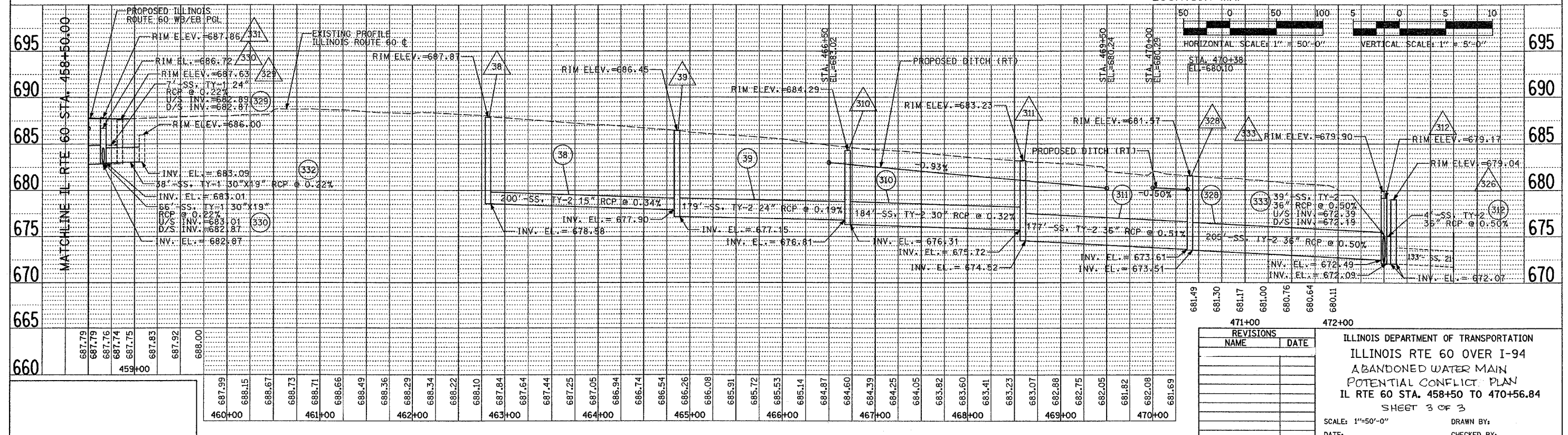
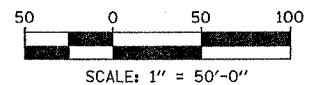
**NOTES:**

- CONNECT THE EXISTING SEWER TO PROPOSED STRUCTURE. THE COST SHALL NOT BE PAID FOR SEPARATELY BUT INCLUDED IN COST OF DRAINAGE STRUCTURE INSTALLATION.
- CONNECT THE PROPOSED SEWER TO DRAINAGE STRUCTURE. THE COST SHALL NOT BE PAID FOR SEPARATELY BUT SHALL BE INCLUDED IN THE COST OF SEWER INSTALLATION OF THE SIZE AND TYPE SHOWN ON PLANS.
- ALL PROPOSED DITCHES AND SWALES SHALL BE SEEDED USING NATIVE VEGETATION SUCH AS IDOT CLASS 4A, 4B OR 5A SEEDING MIXTURES UNLESS NOTED OTHERWISE.
- SEE DRAINAGE AND UTILITY SHEETS 6 THROUGH 10 FOR PROPOSED DRAINAGE IMPROVEMENTS ALONG SAUNDERS ROAD/FIELDS DRIVE AND ALONG EASTBOUND IL 60 EAST OF SAUNDERS ROAD/FIELDS DRIVE.
- FOR CLARITY, PIPE UNDERDRAINS ARE SHOWN OFFSET FROM THEIR PROPOSED LOCATIONS. SEE PROPOSED TYPICAL SECTIONS FOR PROPOSED PUD LOCATIONS. FOR DETAILED PLACEMENT, SEE ILLINOIS TOLLWAY STANDARD B12-00, PIPE UNDERDRAINS (FILTER FABRIC) AND SLOTTED PAVEMENT DRAIN.
- EXISTING FIRE HYDRANT AND PART OF WATER MAIN TO BE RELOCATED BY OTHERS.
- EXISTING ELECTRIC DUCT BETWEEN STA. 461+00 AND STA. 468+00 +/- TO BE RELOCATED BY OTHERS.



**LEGEND:**

- XY PROPOSED STORM SEWER NUMBER (X=SHEET NO., Y=PIPE NO.)
- XY PROPOSED STRUCTURE NUMBER (X=SHEET NO., Y=STRUCTURE NO.)
- SHEET FLOW



REVISIONS	
NAME	DATE

ILLINOIS DEPARTMENT OF TRANSPORTATION  
 ILLINOIS RTE 60 OVER I-94  
 ABANDONED WATER MAIN  
 POTENTIAL CONFLICT PLAN  
 IL RTE 60 STA. 458+50 TO 470+56.84  
 SHEET 3 OF 3  
 SCALE: 1"=50'-0"  
 DATE: \_\_\_\_\_ DRAWN BY: \_\_\_\_\_  
 CHECKED BY: \_\_\_\_\_