

DRAINAGE STRUCTURE SCHEDULE

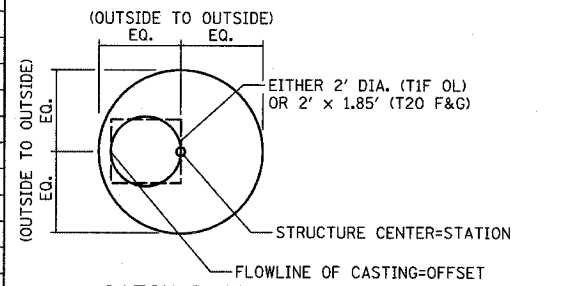
| STRUCTURE NUMBER | STATION   | OFFSET   | STRUCTURE TYPE |         | DIA. (FT) | FRAME & LID | TOP OF FRAME | N INV. | E INV. | S INV. | W INV.   |
|------------------|-----------|----------|----------------|---------|-----------|-------------|--------------|--------|--------|--------|----------|
|                  |           |          | MH/FES/SHW     | CB      |           |             |              |        |        |        |          |
| 211              | 454+58.00 | 10.8 LT  |                | A       | 4         | T20 F&G     | 695.29       |        |        | 690.04 |          |
| 212              | 454+58.00 | 53.0 RT  |                | A       | 4         | T20 F&G     | 694.55       | 689.30 |        |        |          |
| 213              | 454+72.00 | 62.5 LT  |                | A       | 4         | T20 F&G     | 694.08       | 688.83 |        |        |          |
| 214              | 453+08.00 | 56.4 RT  |                | A       | 4         | T20 F&G     | 699.29       | 694.04 |        |        |          |
| 215              | 456+08.00 | 49.7 RT  |                | A       | 4         | T20 F&G     | 690.17       | 684.92 |        |        |          |
| 216              | 457+00.00 | 19.4 LT  |                | C       | 2         | T1F OL      | 689.59       | 685.22 |        |        |          |
| 217              | 456+32.00 | 62.5 LT  |                | A       | 4         | T20 F&G     | 689.61       | 684.63 |        |        |          |
| 218              | 457+12.00 | 62.5 LT  |                | A(2)    | 4         | T20 F&G     | 688.14       | 684.82 |        | 684.82 |          |
| 219              | 457+92.00 | 62.5 LT  |                | A       | 4         | T20 F&G     | 687.22       |        | 681.97 |        |          |
| 220              | 457+08.00 | 16.5 LT  |                | A       | 4         | T20 F&G     | 688.98       |        |        | 683.73 |          |
| 221              | 457+08.00 | 47.5 RT  |                | A       | 4         | T20 F&G     | 688.22       | 683.07 |        | 683.07 |          |
| 222              | 457+08.00 | 7.5 LT   | A              |         | 5         | T1F CL      | 689.20       | 683.70 | 682.58 | 682.58 | 682.58   |
| 223              | 457+93.00 | 45.6 RT  |                | A(2)    | 4         | T20 F&G     | 687.22       | 683.21 |        |        |          |
| 224              | 451+45.11 | 150.8 LT | FES(5)         |         | 36(5)     |             |              | 682.00 |        |        |          |
| 225              | 202+19.00 | 24.4 RT  |                | G-2(16) | 1-11(16)  | TG-2 (16)   | 702.36       |        | 697.19 |        |          |
| 226              | 202+30.00 | 90.7 LT  | SHW(10)        |         | 30(10)    |             |              | 686.17 |        |        |          |
| 227              | 449+69.00 | 63.9 RT  |                | A       | 4         | T20 F&G     | 706.94       |        |        |        | 701.69   |
| 228              | 197+83.00 | 16.2 RT  |                | G-2(16) | 1-11(16)  | TG-2 (16)   | 701.99       |        | 697.06 |        |          |
| 229              | 447+87.00 | 141.0 RT | FES(5)         |         | 12(5)     |             |              | 686.83 |        |        |          |
| 230              | 448+61.63 | 136.8 RT | FES(5)         |         | 12(5)     |             |              | 687.11 |        |        |          |
| 231              | 451+25.97 | 128.7 RT | FES(5)         |         | 36(5)     |             |              | 681.64 |        |        |          |
| 232              | 453+12.00 | 119.2 LT | FES(5)         |         | 12(5)     |             |              |        |        | 688.07 |          |
| 233              | 454+72.00 | 107.5 LT | FES(5)         |         | 12(5)     |             |              |        |        | 679.17 |          |
| 234              | 456+32.00 | 91.8 LT  | FES(5)         |         | 12(5)     |             |              |        |        | 684.33 |          |
| 235              | 457+12.00 | 84.2 LT  | FES(5)         |         | 12(5)     |             |              |        |        | 684.60 |          |
| 236              | 447+79.00 | 147.4 LT | FES(5)         |         | 12(5)     |             |              |        |        | 687.11 |          |
| 237              | 451+69.41 | 147.3 LT | FES(5)         |         | 12(5)     |             |              |        |        | 683.19 |          |
| 238              | 202+19.00 | 95.4 RT  | SHW(10)        |         | 15(10)    |             |              |        |        | 681.95 |          |
| 239              | 448+95.55 | 159.3 LT | FES(5)         |         | 12(5)     |             |              |        |        | 686.18 |          |
| 240              | 197+83.00 | 75.2 RT  | SHW(10)        |         | 15(10)    |             |              |        |        | 682.74 |          |
| 241              | 453+00.00 | 1.5 RT   | A              |         | 5         | T1F CL      | 700.68       | 681.98 | 693.55 | 681.98 |          |
| 242              | 454+58.00 | 2.0 LT   | A              |         | 5         | T1F CL      | 695.52       | 690.01 | 682.16 | 688.81 | 682.16   |
| 243              | 451+34.50 | 5.2 RT   | A              |         | 6         | T1F CL      | 704.73       | 681.80 | 681.80 | 681.80 | 697.58SE |
| 244              | NOT USED  | -        | -              | -       | -         | -           | -            | -      | -      | -      | -        |
| 245              | 457+00.00 | 69.0 RT  |                | C       | 2         | T1F OL      | 685.95       | 683.29 |        |        |          |
| 246              | 457+93.00 | 9.4 LT   | A              |         | 5         | T1F CL      | 688.22       | 682.72 | 682.72 | 682.72 | 682.72   |
| 247              | 447+10.00 | 65.0 LT  |                | A       | 4         | T20 F&G     | 711.51       |        | 705.82 |        |          |
| 248              | 447+10.00 | 65.0 RT  |                | A       | 4         | T20 F&G     | 711.51       |        | 705.76 |        |          |
| 31               | 458+87.81 | 20.5 LT  |                | A(2)    | 4         | T20 F&G     | 687.58       |        |        |        | 682.98   |
| 32               | 458+77.81 | 20.3 LT  |                | A(2)    | 4         | T20 F&G     | 687.61       |        | 682.92 | 682.92 |          |
| 33               | 458+87.81 | 43.5 RT  |                | A(2)    | 4         | T20 F&G     | 686.83       |        |        |        | 683.44   |
| 34               | 458+77.81 | 43.7 RT  |                | A(2)    | 4         | T20 F&G     | 686.84       | 683.38 | 683.38 |        |          |
| 35               | 458+87.81 | 62.5 LT  |                | A       | 4         | T20 F&G     | 686.78       |        |        |        | 681.31   |
| 36               | 458+72.81 | 62.5 LT  |                | A       | 4         | T20 F&G     | 686.79       | 681.20 | 681.20 |        | 681.20   |
| 37               | 458+62.68 | 75.4 LT  | A              |         | 4         | T1F CL      | 687.38       | 681.06 |        | 681.06 |          |
| 38               | 462+82.08 | 3.6 LT   | A              |         | 4         | T1F OL      | 687.87       |        | 678.58 | 680.13 |          |
| 39               | 464+86.00 | 6.0 LT   | A              |         | 5         | T1F OL      | 686.45       |        | 677.15 | 678.86 | 677.90   |
| 310              | 466+70.00 | 8.3 LT   | A              |         | 5         | T1F OL      | 684.29       |        | 676.31 | 677.72 | 676.81   |
| 311              | 468+59.00 | 6.4 LT   | A              |         | 5         | T1F OL      | 683.23       |        | 674.52 | 676.10 | 675.72   |
| 312              | 472+50.25 | 35.6 RT  | A              |         | 6         | T1F OL      | 679.17       | 672.09 |        |        |          |
| 313              | 461+48.00 | 44.5 RT  |                | A       | 4         | T20 F&G     | 687.12       |        | 681.87 |        |          |
| 314              | 462+18.00 | 44.5 RT  |                | A       | 4         | T20 F&G     | 686.90       |        | 681.21 |        | 681.21   |
| 315              | 462+88.00 | 44.5 RT  |                | A       | 4         | T20 F&G     | 686.54       | 680.55 |        |        | 680.55   |
| 316              | 463+58.00 | 44.5 RT  |                | A       | 4         | T20 F&G     | 686.02       |        | 680.77 |        |          |

STORM SEWER AND CULVERT SCHEDULE

| PIPE NUMBER | UPSTREAM STATION | DOWNSTREAM STATION | TYPE | DIA. (IN) | LENGTH (FT) | SLOPE (%) | T.B. (CU.YD) |
|-------------|------------------|--------------------|------|-----------|-------------|-----------|--------------|
| 211         | 454+58.00        | 454+58.00          | 2    | 12        | 3           | 1.00      | 0.9          |
| 212         | 454+58.00        | 454+58.00          | 2    | 12        | 49          | 1.00      | 17.2         |
| * 213       | 454+72.00        | 454+72.00          | 2    | 12        | 48          | 44.86(11) | 0.8          |
| 214         | 453+08.00        | 453+00.00          | 2    | 12        | 49          | 1.00      | 18.3         |
| 215         | 456+08.00        | 456+07.93          | 2    | 12        | 51          | 1.00(3)   | 14.2         |
| * 216       | 457+00.00        | 457+12.00          | 2    | 12        | 40          | 1.00      | 5.3          |
| * 217       | 456+32.00        | 456+32.00          | 2    | 12        | 30          | 1.00      | 0.8          |
| 218         | 457+12.00        | 457+12.00          | 2    | 12        | 22          | 1.00      | 0.3          |
| △ 219       | 457+92.00        | 458+72.81          | 2    | 12        | 77          | 1.00      | 23.0         |
| 220         | 457+08.00        | 457+08.00          | 2    | 12        | 3           | 1.00      | 0.9          |
| 221         | 457+08.00        | 457+08.00          | 2    | 12        | 49          | 1.00      | 16.7         |
| 222         | 457+08.00        | 454+58.00          | 3    | 24        | 245         | 0.17      | 332.0        |
| 223         | 457+93.00        | 457+93.00          | 2    | 12        | 49          | 1.00      | 11.0         |
| 224         | 451+45.11        | 451+34.50          | 4    | 36        | 151         | 0.13      | 313.0        |
| * 225       | 202+19.00        | 202+19.00          | 2    | 15        | 74          | 31.91(11) | 0.8          |
| 226         | 202+30.00        | 202+30.00          | 2    | 30        | 185         | 1.72      | 182.7        |
| 227         | 449+69.00        | 448+96.50          | 2    | 12        | 69          | 1.00      | 26.4         |
| 228         | 197+83.00        | 197+83.00          | 2    | 15        | 62          | 40.23(11) | 0.7          |
| 229         | NOT USED         | -                  | -    | -         | -           | -         | -            |
| 230         | NOT USED         | -                  | -    | -         | -           | -         | -            |
| 231         | NOT USED         | -                  | -    | -         | -           | -         | -            |
| 232         | NOT USED         | -                  | -    | -         | -           | -         | -            |
| 233         | NOT USED         | -                  | -    | -         | -           | -         | -            |
| 234         | NOT USED         | -                  | -    | -         | -           | -         | -            |
| 235         | NOT USED         | -                  | -    | -         | -           | -         | -            |
| 236         | NOT USED         | -                  | -    | -         | -           | -         | -            |
| 237         | NOT USED         | -                  | -    | -         | -           | -         | -            |
| 238         | NOT USED         | -                  | -    | -         | -           | -         | -            |
| 239         | NOT USED         | -                  | -    | -         | -           | -         | -            |
| 240         | NOT USED         | -                  | -    | -         | -           | -         | -            |
| 241         | 453+00.00        | 451+34.50          | 4    | 36        | 161         | 0.11      | 140.3        |
| 242         | 454+58.00        | 453+00.00          | 4    | 36        | 153         | 0.12      | 449.8        |
| 243         | 451+34.50        | 451+25.97          | 4    | 36        | 118         | 0.13      | 228.5        |
| 244         | NOT USED         | -                  | -    | -         | -           | -         | -            |
| 245         | 457+00.00        | 457+08.00          | 2    | 12        | 22          | 1.00      | 0.4          |
| 246         | 457+93.00        | 457+08.00          | 2    | 24        | 80          | 0.17      | 30.6         |
| 247         | 447+10.00        | 447+79.00          | 2    | 12        | 65          | 1.00      | 19.4         |
| 248         | 447+10.00        | 447+87.00          | 2    | 12        | 73          | 1.00      | 21.8         |
| 31          | 458+87.81        | 458+77.81          | 2    | 15        | 6           | 1.00      | 1.3          |
| 32          | 458+77.81        | 458+77.96          | 2    | 15        | 3           | 1.00      | 0.7          |
| 33          | 458+87.81        | 458+77.81          | 1    | 15        | 6           | 1.00      | 0.4          |
| 34          | 458+77.81        | 458+77.96          | 1    | 15        | 49          | 1.00      | 7.0          |
| △ 35        | 458+87.81        | 458+72.81          | 2    | 15        | 11          | 1.00      | 3.5          |
| * 36        | 458+72.81        | 458+62.68          | 2    | 15        | 14          | 1.00      | 1.5          |
| 37          | NOT USED         | -                  | -    | -         | -           | -         | -            |
| 38          | 462+82.08        | 464+86.00          | 2    | 15        | 200         | 0.34      | 0            |
| 39          | 464+86.00        | 466+70.00          | 2    | 24        | 179         | 0.19      | 0            |
| 310         | 466+70.00        | 468+59.00          | 2    | 30        | 184         | 0.32      | 0            |
| 311         | 468+59.00        | 470+40.50          | 2    | 36        | 177         | 0.51      | 64.4         |
| 312         | 472+50.25        | 472+60.25          | 2    | 36        | 4           | 0.50      | 2.9          |
| △ 313       | 461+48.00        | 462+18.00          | 2    | 12        | 66          | 1.00      | 19.7         |
| △ 314       | 462+18.00        | 462+88.00          | 2    | 12        | 66          | 1.00      | 22.5         |
| 315         | 462+88.00        | 462+82.08          | 2    | 12        | 42          | 1.00      | 27.1         |
| △ 316       | 463+58.00        | 464+28.00          | 2    | 12        | 66          | 1.00      | 18.3         |

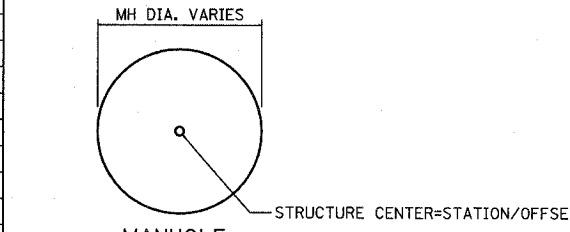
NOTES:

- INDICATES MANHOLE, TYPE A, 6' DIAMETER, TYPE 1 FRAME, CLOSED LID, RESTRICTOR PLATE.
- INDICATES CATCH BASIN TYPE A WITH FLAT SLAB TOP.
- INDICATES SEWER LATERAL WITH 45° CONNECTION. SEE SHEET "DETAIL OF STORM SEWER CONNECTIONS TO SEWER."
- INDICATES MANHOLE TYPE A WITH FLAT SLAB TOP, IDOT STANDARD 602601.
- FES=FLARED END SECTION, ES=END SECTION. SIZE NOTED IN SCHEDULE IS GIVEN IN INCHES.
- SEE THE DRAINAGE & UTILITY PLANS FOR LOCATION OF ALL STRUCTURES.
- CATCH BASIN STATIONS ARE MEASURED TO CENTER OF STRUCTURE.
- CATCH BASIN OFFSETS ARE MEASURED TO FLOWLINE OF CASTING. (SEE BELOW)
- FLOWLINE OF CASTING IS LOCATED AT C OF STRUCTURE FOR CATCH BASINS LOCATED IN SWALE AND GORE AREAS.
- SLOPED HEAD WALLS TYPE III, ISTHA STANDARD B10-00. SIZE NOTED IN SCHEDULE IS GIVEN IN INCHES.
- PIPE SLOPES ARE BASED ON SLOPED PIPE DRAIN DESIGN. SEE SHEET "DRAINAGE DETAILS-SHEET 4 OF 4."
- INDICATES REINFORCED CONCRETE END SECTION, CAST IN PLACE, IDOT STANDARD 542106-01.
- INDICATES REINFORCED CONCRETE END SECTION, CAST IN PLACE, WITH PARALLEL WING WALLS IDOT STANDARD 542001.



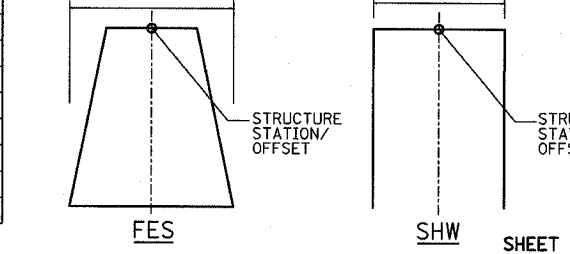
CATCH BASIN (PRECAST REINFORCED CONCRETE SECTION)

- MANHOLE STATIONS AND OFFSETS ARE MEASURED TO CENTER OF STRUCTURE.



MANHOLE

- FLARED END SECTION AND SLOPED HEADWALL STATIONS AND OFFSETS ARE LOCATED AS SHOWN.



FES SHW SHEET 2 OF 3

NOTES CONTINUED:

- CATCH BASIN, TYPE G-2, WITH A TYPE G-2 FRAME AND GRATE, ISTHA STANDARD B8-00. SIZE NOTED IN SCHEDULE IS GIVEN IN FEET-INCHES.
- PIPE TO PIPE CONNECTION.
  - ALL OR A PORTION OF THIS SEWER SHALL BE OF WATER MAIN OR GRADE (△) OR RUBBER GASKET (\*) PER STANDARD SPECIFICATION REQUIREMENTS FOR WATER AND SEWER MAIN CONSTRUCTION IN ILLINOIS.

| REVISIONS |      |
|-----------|------|
| NAME      | DATE |
|           |      |
|           |      |
|           |      |
|           |      |
|           |      |
|           |      |
|           |      |
|           |      |
|           |      |
|           |      |
|           |      |

ILLINOIS DEPARTMENT OF TRANSPORTATION  
ILLINOIS RTE 60 OVER I-94

DRAINAGE SCHEDULE

SCALE: NONE DRAWN BY: NSB  
DATE: MAY 8, 2007 CHECKED BY: DA

TYLIN INTERNATIONAL

05/08/2007 07:32:43 AM