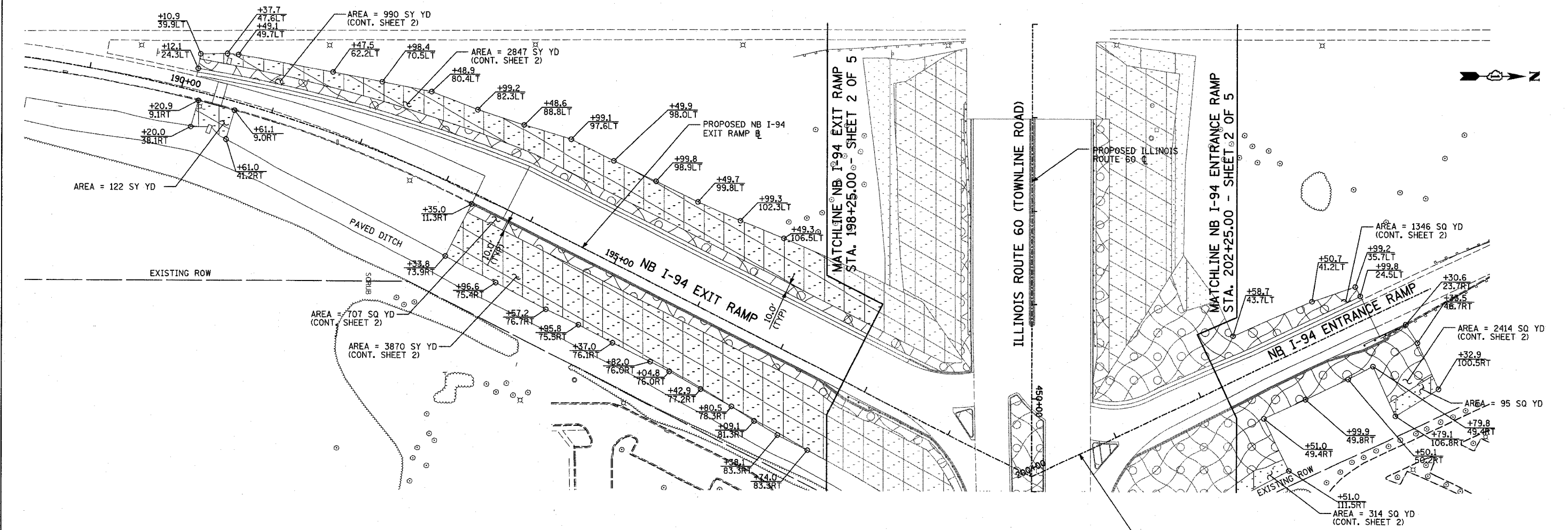


F.A.P. RTE.	SECTION	COUNTY	TOTAL SHEETS	SHEET NO.
335	119R-2	LAKE	439	175
STA. 432+83.12		TO STA. 470+56.84		
FED. ROAD DIST. NO.		ILLINOIS FED. AID PROJECT		

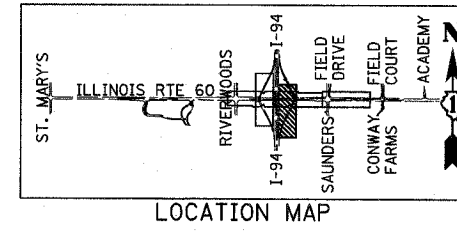
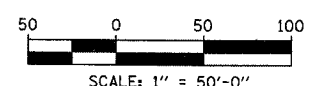
60B01



PROPOSED NB I-94 ENTRANCE RAMP

**LEGEND:**

- SEEDING CLASS 2A, 4" TOPSOIL AND NUTRIENTS WITH EROSION CONTROL BLANKET
- SEEDING CLASS 3, 4" TOPSOIL AND NUTRIENTS WITH EROSION CONTROL BLANKET
- SEEDING CLASS 4A, 4" TOPSOIL AND NUTRIENTS WITH EROSION CONTROL BLANKET
- SODDING, 4" TOPSOIL AND NUTRIENTS



REVISIONS	
NAME	DATE

ILLINOIS DEPARTMENT OF TRANSPORTATION  
 ILLINOIS RTE 60 OVER I-94  
 LANDSCAPING PLANS  
 NORTHBOUND INTERSTATE 94 RAMPS  
 SHEET 5 OF 5

SCALE: 1"=50'-0"  
 DATE: MAY 8, 2007  
 DRAWN BY: CBS  
 CHECKED BY: MPG

**TYLIN** INTERNATIONAL

05/07/2007 12:13:32 PM