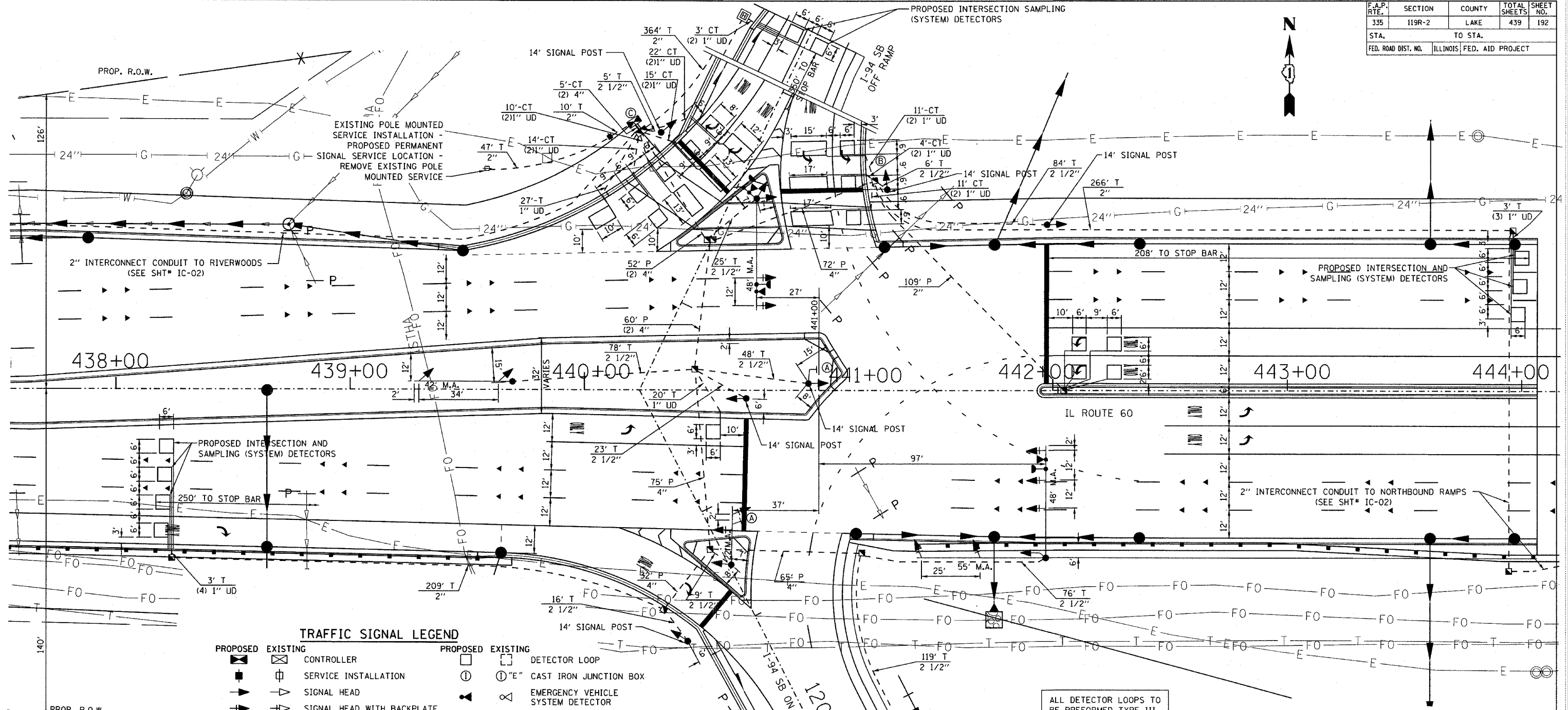


F.A.P. RTE.	SECTION	COUNTY	TOTAL SHEETS	SHEET NO.
335	119R-2	LAKE	439	192
STA.		TO STA.		
FED. ROAD DIST. NO.		ILLINOIS FED. AID PROJECT		



TRAFFIC SIGNAL LEGEND

PROPOSED	EXISTING	DESCRIPTION	PROPOSED	EXISTING	DESCRIPTION
[Symbol]	[Symbol]	CONTROLLER	[Symbol]	[Symbol]	DETECTOR LOOP
[Symbol]	[Symbol]	SERVICE INSTALLATION	[Symbol]	[Symbol]	"E" CAST IRON JUNCTION BOX
[Symbol]	[Symbol]	SIGNAL HEAD	[Symbol]	[Symbol]	EMERGENCY VEHICLE SYSTEM DETECTOR
[Symbol]	[Symbol]	SIGNAL HEAD WITH BACKPLATE	[Symbol]	[Symbol]	CONFIRMATION BEACON
[Symbol]	[Symbol]	SIGNAL HEAD, PEDESTRIAN	[Symbol]	[Symbol]	SIGNAL HEAD OPTICALLY PROGRAMMED
[Symbol]	[Symbol]	SIGNAL POST	[Symbol]	[Symbol]	CONDUIT SPLICE
[Symbol]	[Symbol]	MAST ARM ASSEMBLY AND POLE, STEEL	[Symbol]	[Symbol]	"E" WOOD POLE
[Symbol]	[Symbol]	MAST ARM ASSEMBLY AND POLE, ALUMINUM	[Symbol]	[Symbol]	"E" RACEWAY FOR MAGNETIC DETECTOR, TYPE I OR TYPE II
[Symbol]	[Symbol]	COMB. MAST ARM ASSEMBLY AND POLE, STEEL WITH LUMINAIRE	[Symbol]	[Symbol]	VEHICLE DETECTOR, NON COMPENSATED, MAGNETIC TYPE
UD		UNIT DUCT	[Symbol]	[Symbol]	"E" RAILROAD CONTROL CABINET
CT		COMMON TRENCH	[Symbol]	[Symbol]	TELEPHONE
[Symbol]	[Symbol]	HANDHOLE	[Symbol]	[Symbol]	ILLUMINATED SIGN, FIBER OPTIC "NO LEFT TURN"
[Symbol]	[Symbol]	"E" HEAVY DUTY HANDHOLE	[Symbol]	[Symbol]	ILLUMINATED SIGN, FIBER OPTIC "NO RIGHT TURN"
[Symbol]	[Symbol]	DOUBLE HANDHOLE	[Symbol]	[Symbol]	UNINTERRUPTIBLE POWER SUPPLY
[Symbol]	[Symbol]	G.S. CONDUIT IN TRENCH OR PUSHED			
[Symbol]	[Symbol]	PEDESTRIAN PUSH-BUTTON DETECTOR			

- ALL DETECTOR LOOPS TO BE PERFORMED TYPE III
- NOTES:
1. THE TRAFFIC SIGNAL CONTROL EQUIPMENT FOR THIS PROJECT SHALL BE "EAGLE" TO MATCH THE EXISTING ADJACENT SYSTEM.
 2. RESTORATION OF WORK AREA
RESTORATION OF THE TRAFFIC WORK AREA SHALL BE INCLUDED IN THE COST OF THE RELATED PAY ITEM SUCH AS FOUNDATION, CONDUIT, HANDHOLE, TRENCH AND BACKFILL, ETC., AND NO EXTRA COMPENSATION SHALL BE ALLOWED. ALL ROADWAY SURFACES SUCH AS SHOULDERS, MEDIANS, SIDEWALKS, PAVEMENT, ETC., SHALL BE REPLACED IN KIND. ALL DAMAGE TO MOWED LINES SHALL BE REPLACED WITH AN APPROVED SOD, AND ALL DAMAGE TO UNMOWED FIELDS SHALL BE SEEDING IN ACCORDANCE WITH STANDARD SPECIFICATIONS 252 AND 250 RESPECTIVELY.
- REVISIONS
- | NAME | DATE |
|------|------|
| | |
| | |
| | |
| | |
| | |
- ILLINOIS DEPARTMENT OF TRANSPORTATION
- TRAFFIC SIGNAL INSTALLATION
ILL 60 & I-94 SOUTHBOUND RAMPS**
- S.N. DESIGNED BY: JM
SCALE: 1" = 20' DRAWN BY: PK
DATE: MAY 8, 2007 CHECKED BY: GR
- (A) FURNISH AND INSTALL "LEFT TURN ON GREEN ARROW ONLY" SIGN (R10-5-24"x30")
- (B) FURNISH AND INSTALL ONE NO. 14 2/C AND ONE NO. 14 3/C BETWEEN CONTROLLER AND HANDHOLE; COIL, LABEL, AND STORE ADDITIONAL 30' IN HANDHOLE FOR FUTURE PED SIGNAL AND PED PUSHBUTTON FOR FUTURE BIKE PATH. CABLES INCLUDED IN PAY ITEM QUANTITY. DO NOT CONNECT CABLES IN CONTROLLER CABINET.
- (C) FURNISH AND INSTALL ONE NO. 14 2/C AND ONE NO. 14 3/C BETWEEN CONTROLLER AND DOUBLE HANDHOLE; COIL, LABEL, AND STORE ADDITIONAL 30' IN DOUBLE HANDHOLE FOR FUTURE PED SIGNAL AND PED PUSHBUTTON FOR FUTURE BIKE PATH. CABLES INCLUDED IN PAY ITEM QUANTITIES. DO NOT CONNECT CABLES IN CONTROLLER CABINET.