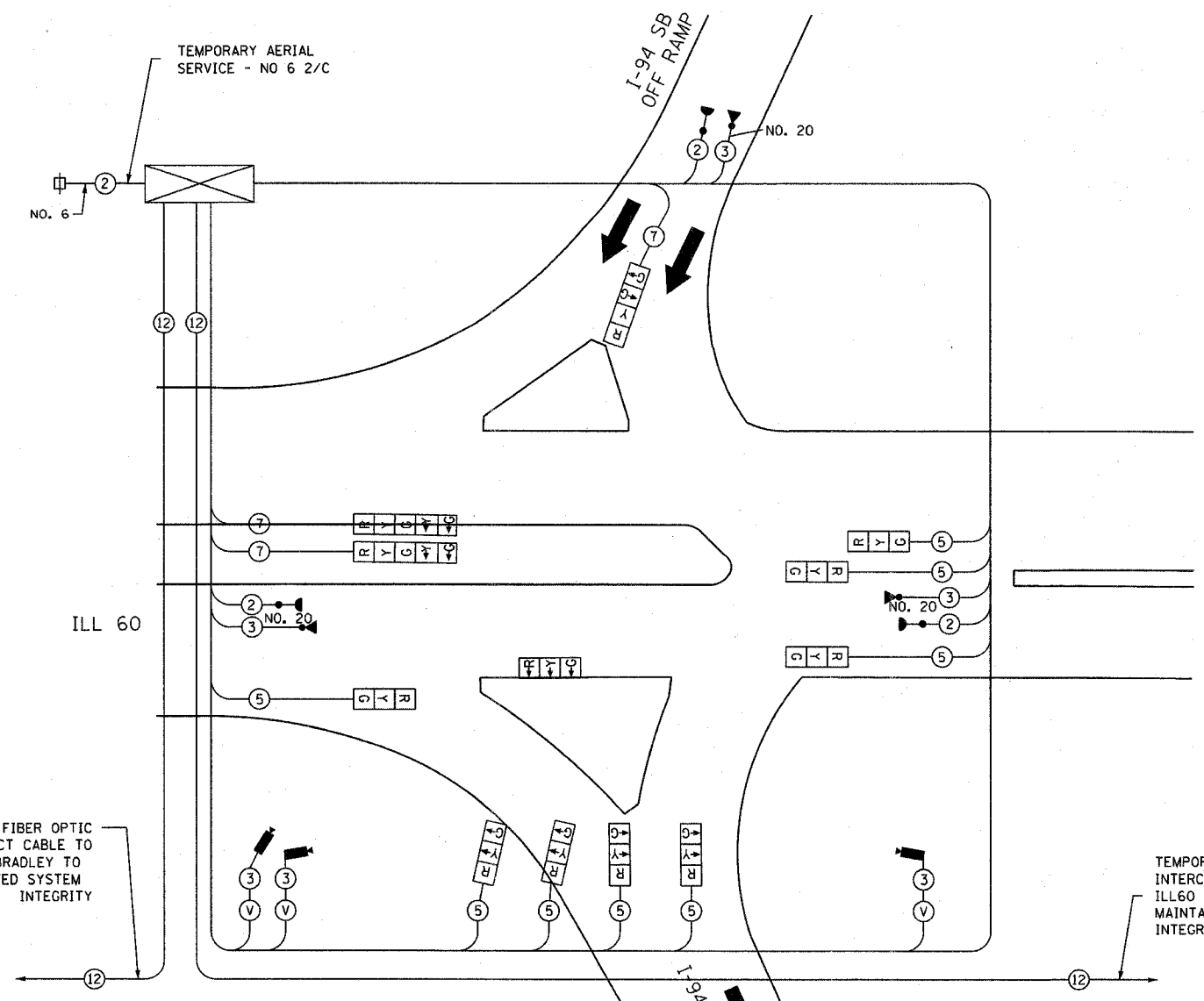
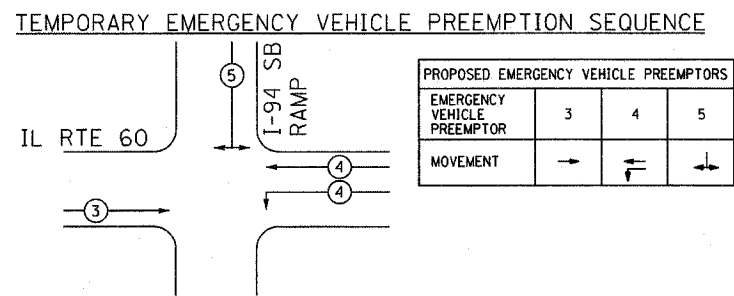
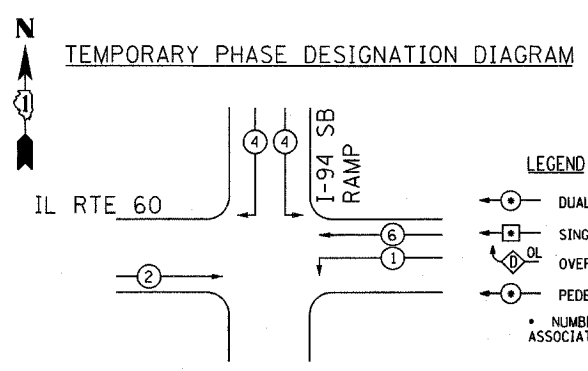


| | | | | |
|---------------------|---------|---------------------------|--------------|-----------|
| F.A.P. RTE. | SECTION | COUNTY | TOTAL SHEETS | SHEET NO. |
| 335 | 119R-2 | LAKE | 439 | 210 |
| STA. | | TO STA. | | |
| FED. ROAD DIST. NO. | | ILLINOIS FED. AID PROJECT | | |

60B01



TEMPORARY CABLE DIAGRAM LEGEND

- [R] TEMPORARY TRAFFIC SIGNAL SECTION OR PEDESTRIAN SIGNAL SECTION 12" (300mm)
- [X] TEMPORARY CONTROLLER CABINET
- [⊕] TEMPORARY SERVICE INSTALLATION
- (5) INDICATES NUMBER OF CONDUCTORS IN CABLE. ALL CONDUCTORS TO BE NUMBER 14 AWG WIRE UNLESS OTHERWISE NOTED
- [▶] EMERGENCY VEHICLE LIGHT DETECTOR
- [◀] CONFIRMATION BEACON
- [□] VEHICLE DETECTOR, INDUCTION LOOP
- [⊙] PEDESTRIAN PUSHBUTTON DETECTOR
- [⊠] 12" (300mm) PEDESTRIAN SIGNAL SECTION
- [■] VIDEO VEHICLE DETECTOR
- (12) NO. 62.5/125 12F FIBER OPTIC CABLE
- (V) VIDEO DETECTOR CABLE AS RECOMMENDED BY VIDEO CAMERA MANUFACTURER

NOTE:
LOCATION AND NUMBER OF VIDEO DETECTION CAMERAS WILL VARY FROM STAGE TO STAGE

| TEMPORARY TRAFFIC SIGNAL INSTALLATION ELECTRICAL SERVICE REQUIREMENTS ILL 60 & I-94 SOUTHBOUND RAMP | | | | | TOTAL |
|---|-----------|-----------------------|-------------|---------|-------|
| TYPE | NO. LAMPS | WATTAGE INCAND. -LED. | % OPERATION | WATTAGE | |
| SIGNAL (RED) | 11 | 17 | 0.50 | 93.50 | |
| (YELLOW) | 11 | 25 | 0.25 | 68.75 | |
| (GREEN) | 12 | 15 | 0.25 | 45.00 | |
| ARROW | 4 | 12 | 0.10 | 4.80 | |
| PED. SIGNAL | | | 1.00 | | |
| CONTROLLER | 1 | 100 | 1.00 | 100.00 | |
| FLASHER | | | | | |
| TOTAL = | | | | 312.05 | |

EXISTING SERVICE LOCATION
ENERGY COSTS TO:
ENERGY SUPPLY CONTACT: JOHN D. PRIBICH
PHONE: 630-437-2212
COMPANY: COMM. EDISON



| REVISIONS | |
|-----------|------|
| NAME | DATE |
| | |
| | |
| | |
| | |
| | |
| | |
| | |
| | |
| | |
| | |

ILLINOIS DEPARTMENT OF TRANSPORTATION
TEMPORARY CABLE PLAN AND
TEMPORARY PHASE DESIGNATION DIAGRAM
ILL 60 & I-94 SOUTHBOUND RAMPS
STAGES 1, 1A, 2, 3, 3A, 4

S.N.
SCALE: 1" = 20'
DATE: MAY 8, 2007

DESIGNED BY: JM
DRAWN BY: PK
CHECKED BY: CK