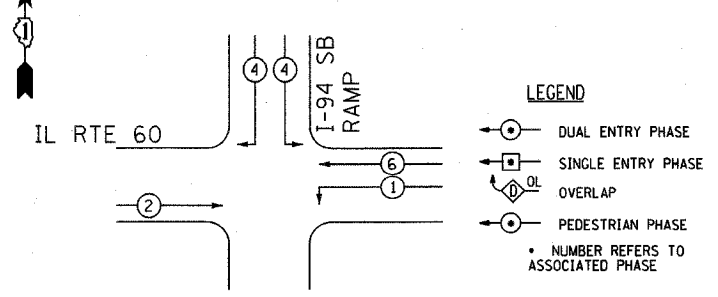
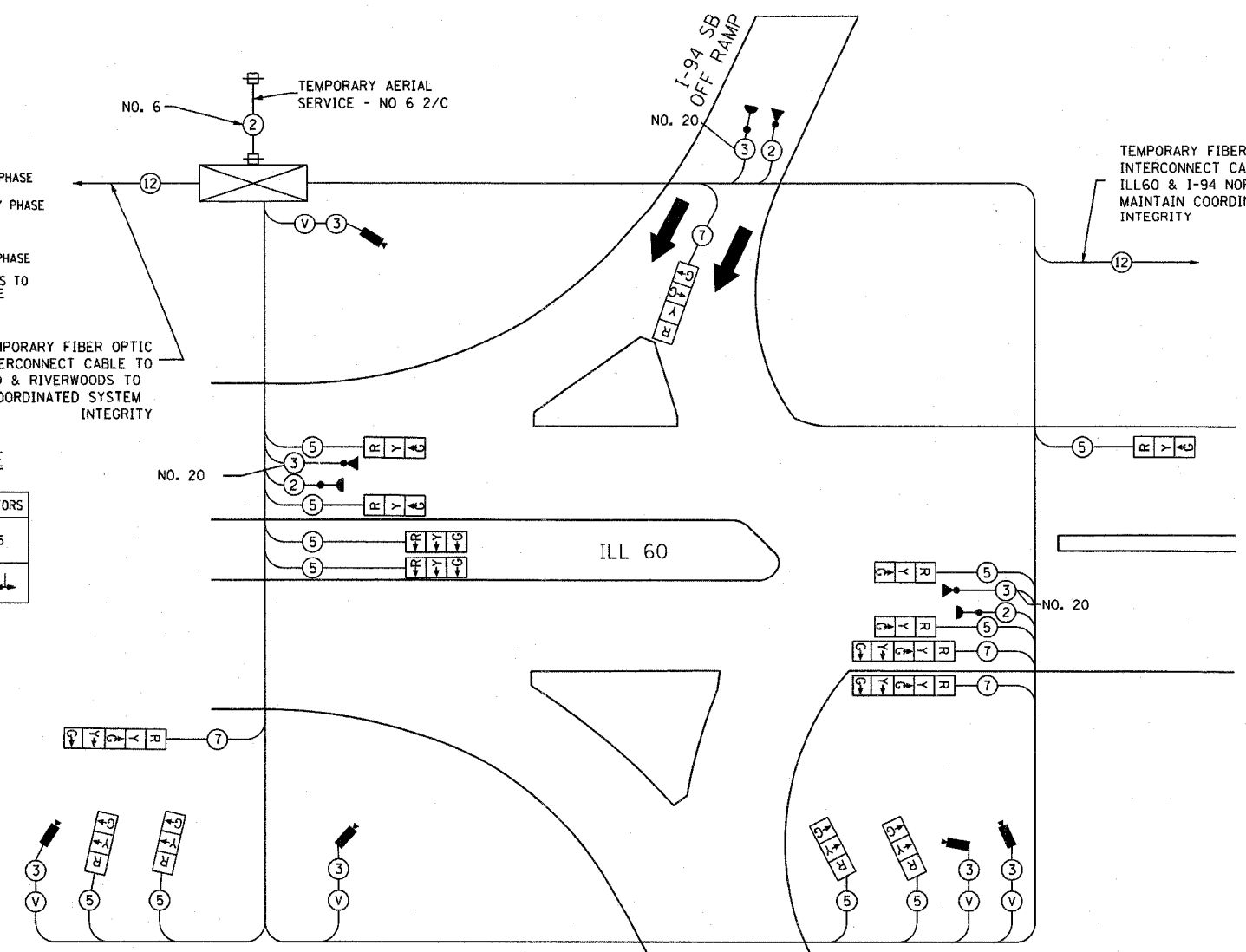
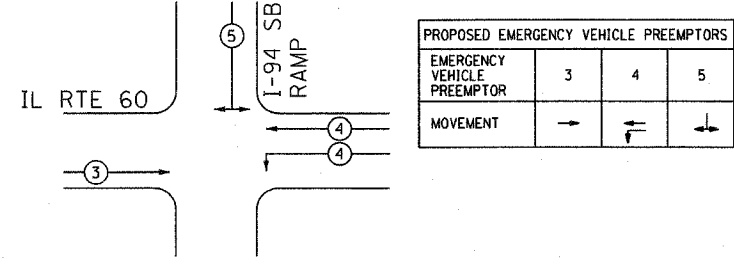


TEMPORARY PHASE DESIGNATION DIAGRAM



TEMPORARY FIBER OPTIC INTERCONNECT CABLE TO ILL60 & RIVERWOODS TO MAINTAIN COORDINATED SYSTEM INTEGRITY

TEMPORARY EMERGENCY VEHICLE PREEMPTION SEQUENCE



TEMPORARY CABLE DIAGRAM LEGEND

- TEMPORARY TRAFFIC SIGNAL SECTION OR PEDESTRIAN SIGNAL SECTION 12" (300mm)
- TEMPORARY CONTROLLER CABINET
- TEMPORARY SERVICE INSTALLATION
- INDICATES NUMBER OF CONDUCTORS IN CABLE. ALL CONDUCTORS TO BE NUMBER 14 AWG WIRE UNLESS OTHERWISE NOTED
- EMERGENCY VEHICLE LIGHT DETECTOR
- CONFIRMATION BEACON
- VEHICLE DETECTOR, INDUCTION LOOP
- PEDESTRIAN PUSHBUTTON DETECTOR
- 12" (300mm) PEDESTRIAN SIGNAL SECTION
- VIDEO VEHICLE DETECTOR
- NO. 62.5/125 12F FIBER OPTIC CABLE
- VIDEO DETECTOR CABLE AS RECOMMENDED BY VIDEO CAMERA MANUFACTURER

TEMPORARY CABLE PLAN

NOTE: LOCATION AND NUMBER OF VIDEO DETECTION CAMERAS WILL VARY FROM STAGE TO STAGE

TEMPORARY TRAFFIC SIGNAL INSTALLATION ELECTRICAL SERVICE REQUIREMENTS ILL 60 & I-94 SOUTHBOUND RAMP					TOTAL
TYPE	NO. LAMPS	WATTAGE INCAND. -LED.	% OPERATION	WATTAGE	
SIGNAL (RED)	15	17	0.50	127.50	
(YELLOW)	15	25	0.25	93.75	
(GREEN)	16	15	0.25	60.00	
ARROW	6	12	0.10	7.20	
PED. SIGNAL			1.00		
CONTROLLER	1	100	1.00	100.00	
FLASHER					
TOTAL =				388.45	

EXISTING SERVICE LOCATION
 ENERGY COSTS TO:
 ENERGY SUPPLY CONTACT: JOHN D. PRIBICH
 PHONE: 630-437-2212
 COMPANY: COMM. EDISON

EJM ENGINEERING, INC.
 411 South Wells Street Suite 800
 Chicago, Illinois 60607

REVISIONS	
NAME	DATE

ILLINOIS DEPARTMENT OF TRANSPORTATION
TEMPORARY CABLE PLAN AND TEMPORARY PHASE DESIGNATION DIAGRAM ILL 60 & I-94 SOUTHBOUND RAMPS STAGE 5

S.J.N. DESIGNED BY: JM
 SCALE: 1" = 20' DRAWN BY: PK
 DATE: MAY 8, 2007 CHECKED BY: CK