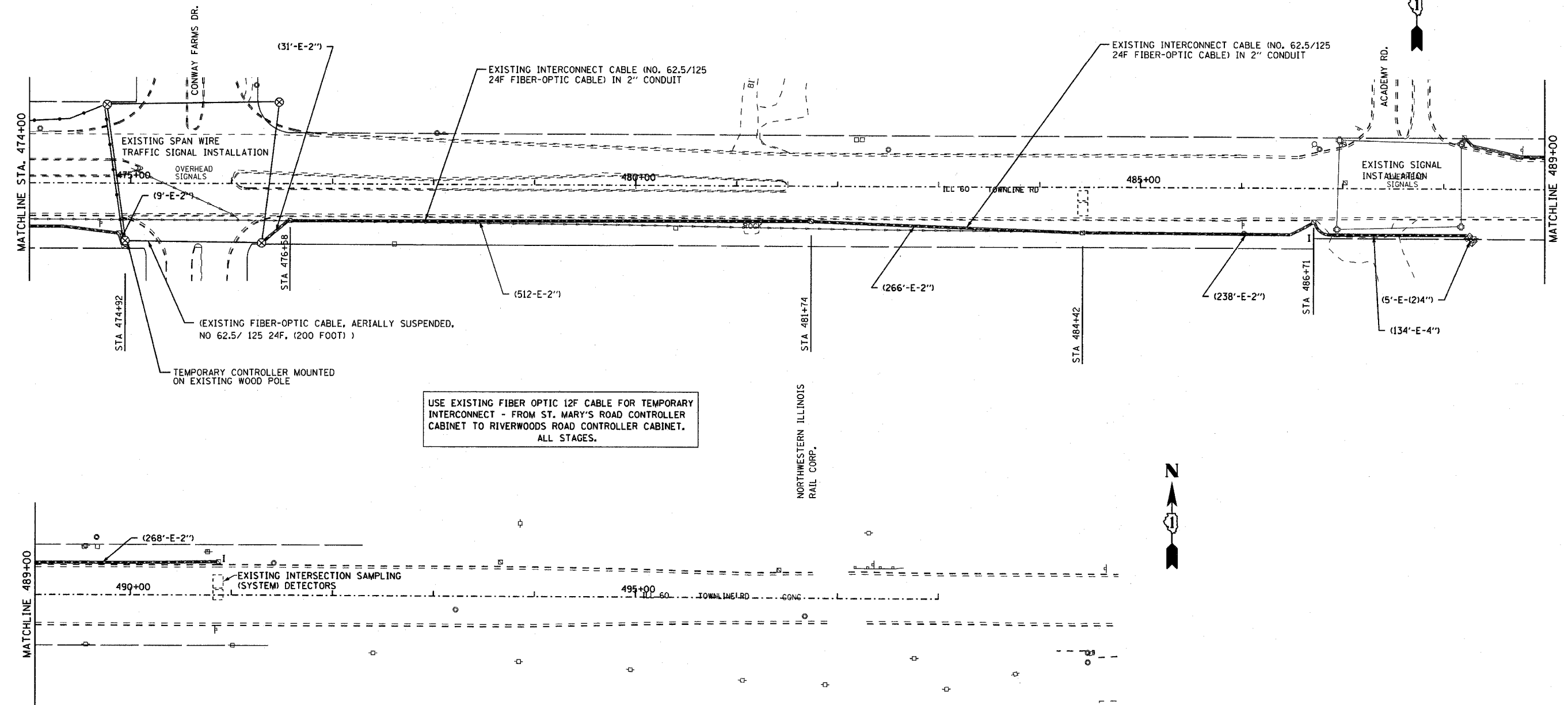


F.A.P. RTE.	SECTION	COUNTY	TOTAL SHEETS	SHEET NO.
335	119R-2	LAKE	439	233
STA.	TO STA.			
FED. ROAD DIST. NO.	ILLINOIS	FED. AID PROJECT		

60B01



USE EXISTING FIBER OPTIC 12F CABLE FOR TEMPORARY INTERCONNECT - FROM ST. MARY'S ROAD CONTROLLER CABINET TO RIVERWOODS ROAD CONTROLLER CABINET. ALL STAGES.



REVISIONS	
NAME	DATE

ILLINOIS DEPARTMENT OF TRANSPORTATION
 TEMPORARY INTERCONNECT PLAN
 ILL ROUTE 60
 ST. MARY'S ROAD TO ACADEMY DRIVE
 STAGES 3, 3A, 4, 5

S.N.
 SCALE: 1" = 50'-0"
 DATE: MAY 8, 2007

DESIGNED BY: JM
 DRAWN BY: PK
 CHECKED BY: CK

EJM ENGINEERING, INC.
 411 South Wells Street Suite 800
 Chicago, Illinois 60607