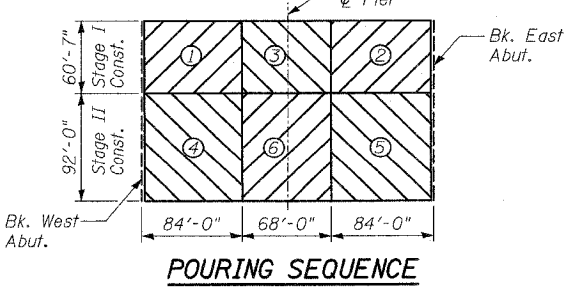
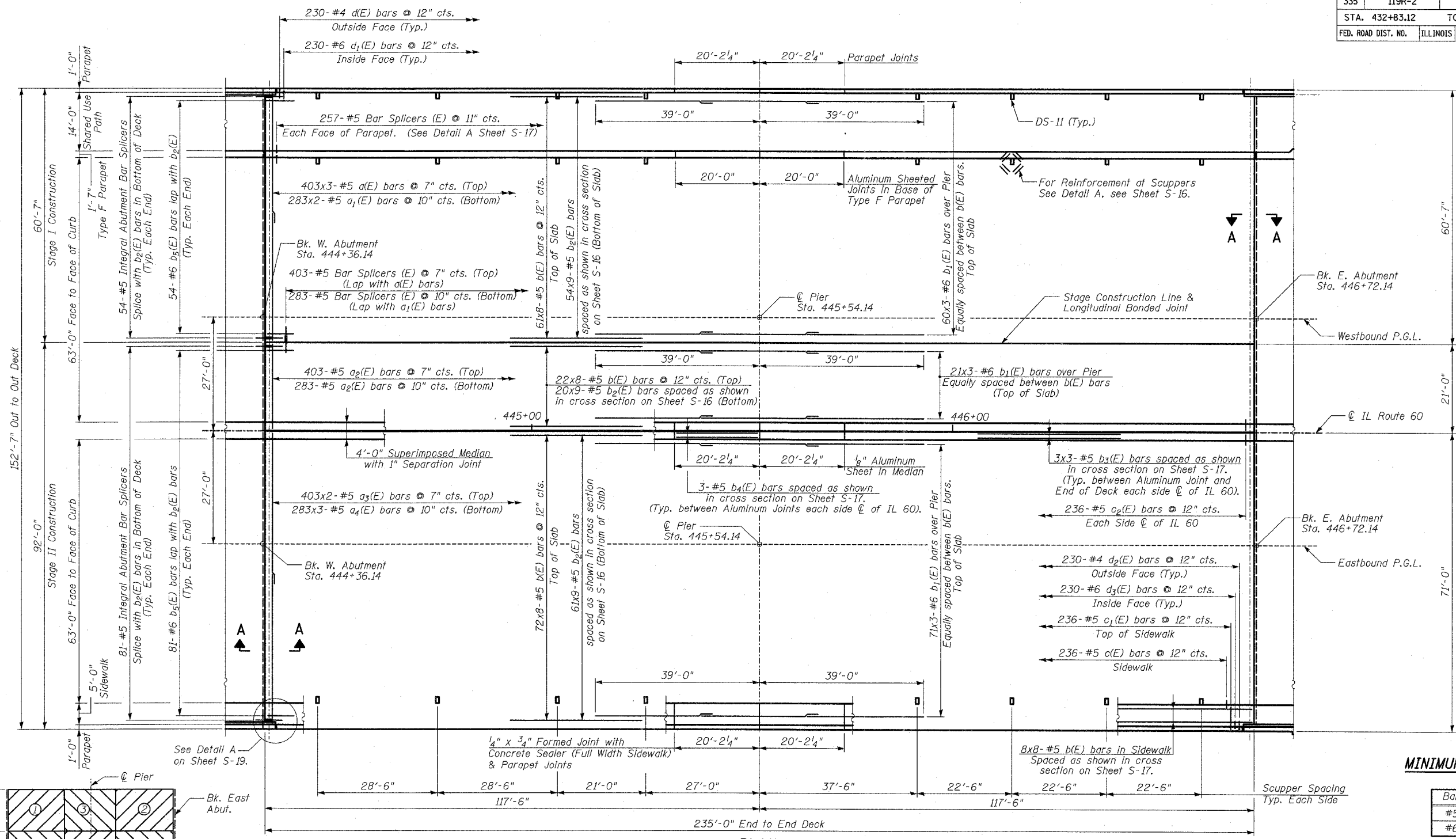


| | | | | |
|---------------------|----------|-------------------|--------------|-----------|
| F.A.P. RTE. | SECTION | COUNTY | TOTAL SHEETS | SHEET NO. |
| 335 | 119R-2 | LAKE | 439 | 262 |
| STA. 432+83.12 | | TO STA. 470+56.84 | | |
| FED. ROAD DIST. NO. | ILLINOIS | FED. AID PROJECT | | |

60B01



NOTES

- For Additional Superstructure Details, see Sheets S-16 to S-22.
- For Bill of Material, see Sheet S-17.
- For Section A-A see Sheet S-20.
- Bars indicated thus: 20 x 3-#5 etc. indicates 20 lines of bars with 3 lengths per line.
- Cut Longitudinal Bars to clear Drainage Scuppers.
- For Bar Splicer Details, see Sheet S-38.
- For Parapet Reinforcement, see Sheets S-18 and S-19.
- When the deck pour is stopped for the day at one or more of the transverse bonded construction joints in the deck pouring sequence as shown, the next pour shall not be made until both of the following are met:
 - At least 72 hours shall have elapsed from the end of the previous pour.
 - The concrete strength shall have attained a minimum flexural strength of 650 psi or a minimum compressive strength of 3500 psi.

TYLIN INTERNATIONAL

MINIMUM BAR LAPS

| Bar | Lap |
|-----|-------|
| #5 | 2'-2" |
| #6 | 2'-7" |

| REVISIONS | |
|-----------|------|
| NAME | DATE |
| | |
| | |
| | |
| | |
| | |
| | |
| | |
| | |
| | |

ILLINOIS DEPARTMENT OF TRANSPORTATION
DECK PLAN
 ILLINOIS 60 OVER I-94
 F.A.P. RTE. 335 SECTION 119R-2
 LAKE COUNTY STA. 445+54.14
 S.N. 049-2012 ISTHA BRIDGE NO. 407
 DESIGNED BY: SNB
 DRAWN BY: SNB
 SCALE:
 DATE: MAY 8, 2007
 CHECKED BY: SP

SHEET S-15 OF S-53

P:\602456\11-60\structure\1160B01\60B01.DWG 05/03/2007 04:30:13 PM