

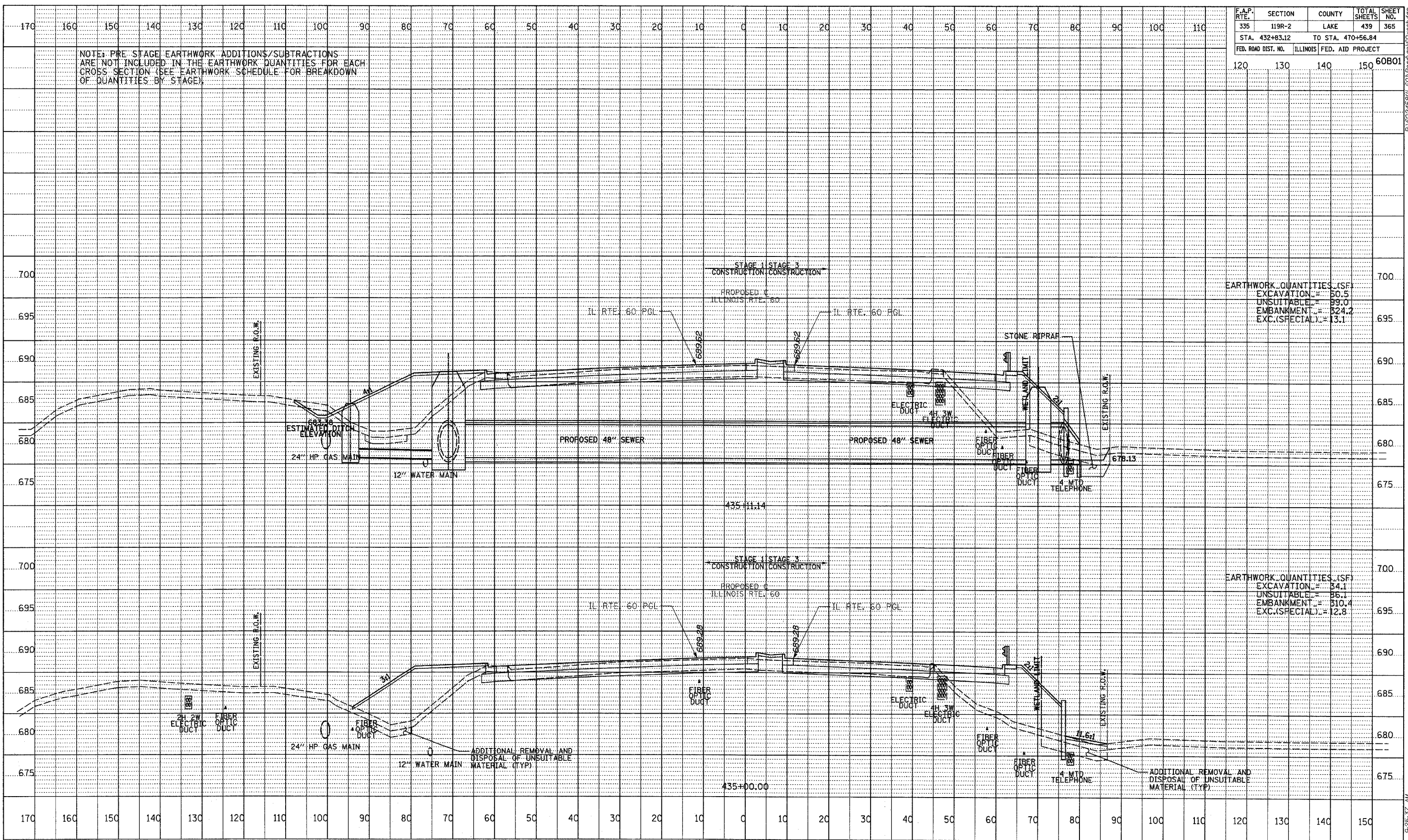
F.A.P. RTE.	SECTION	COUNTY	TOTAL SHEETS	SHEET NO.
335	119R-2	LAKE	439	365
STA. 432+83.12		TO STA. 470+56.84		
FED. ROAD DIST. NO.	ILLINOIS	FED. AID PROJECT		

NOTE: PRE STAGE EARTHWORK ADDITIONS/SUBTRACTIONS ARE NOT INCLUDED IN THE EARTHWORK QUANTITIES FOR EACH CROSS SECTION (SEE EARTHWORK SCHEDULE FOR BREAKDOWN OF QUANTITIES BY STAGE).

EARTHWORK QUANTITIES (SF)
 EXCAVATION = 50.5
 UNSUITABLE = 89.0
 EMBANKMENT = 324.2
 EXC.(SPECIAL) = 13.1

EARTHWORK QUANTITIES (SF)
 EXCAVATION = 34.1
 UNSUITABLE = 36.1
 EMBANKMENT = 310.4
 EXC.(SPECIAL) = 12.8

DATE	BY



TYL IN INTERNATIONAL



ILLINOIS RTE. 60 (TOWNLIN RD)
 STA. 435+00 TO STA. 435+11.14

P:\6024581\1-60\Road\p60\60xssi.dgn 9:25:37 AM 5/7/2007