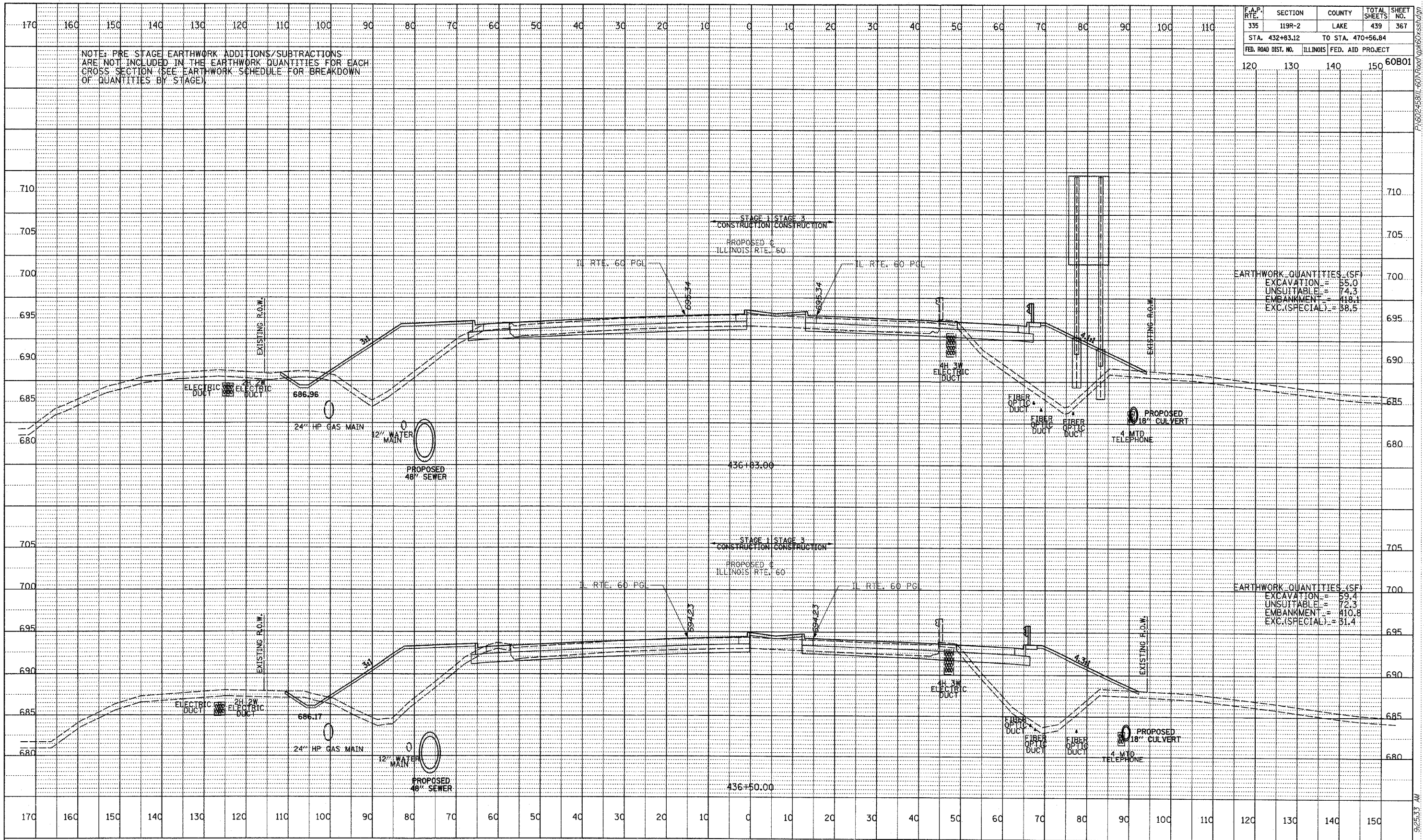


| F.A.P. RTE.                      | SECTION  | COUNTY           | TOTAL SHEETS | SHEET NO. |
|----------------------------------|----------|------------------|--------------|-----------|
| 335                              | 119R-2   | LAKE             | 439          | 367       |
| STA. 432+83.12 TO STA. 470+56.84 |          |                  |              |           |
| FED. ROAD DIST. NO.              | ILLINOIS | FED. AID PROJECT |              |           |
|                                  |          |                  | 120          | 130       |
|                                  |          |                  | 140          | 150       |
|                                  |          |                  | 60B01        |           |

NOTE: PRE-STAGE EARTHWORK ADDITIONS/SUBTRACTIONS ARE NOT INCLUDED IN THE EARTHWORK QUANTITIES FOR EACH CROSS SECTION (SEE EARTHWORK SCHEDULE FOR BREAKDOWN OF QUANTITIES BY STAGE)

EARTHWORK QUANTITIES (SF)  
 EXCAVATION = 55.0  
 UNSUITABLE = 74.3  
 EMBANKMENT = 418.1  
 EXC.(SPECIAL) = 38.5

EARTHWORK QUANTITIES (SF)  
 EXCAVATION = 59.4  
 UNSUITABLE = 72.3  
 EMBANKMENT = 410.8  
 EXC.(SPECIAL) = 31.4



|          |  |
|----------|--|
| DATE     |  |
| BY       |  |
| REVISION |  |
| NOTES    |  |
| NO.      |  |

TYLIN INTERNATIONAL



ILLINOIS RTE. 60 (TOWNLIN RD)  
 STA. 436+50 TO STA. 436+83

PAGE 245811\_6011 Road Vpk60xss1.dwg 9:25:33 AM 5/7/2007