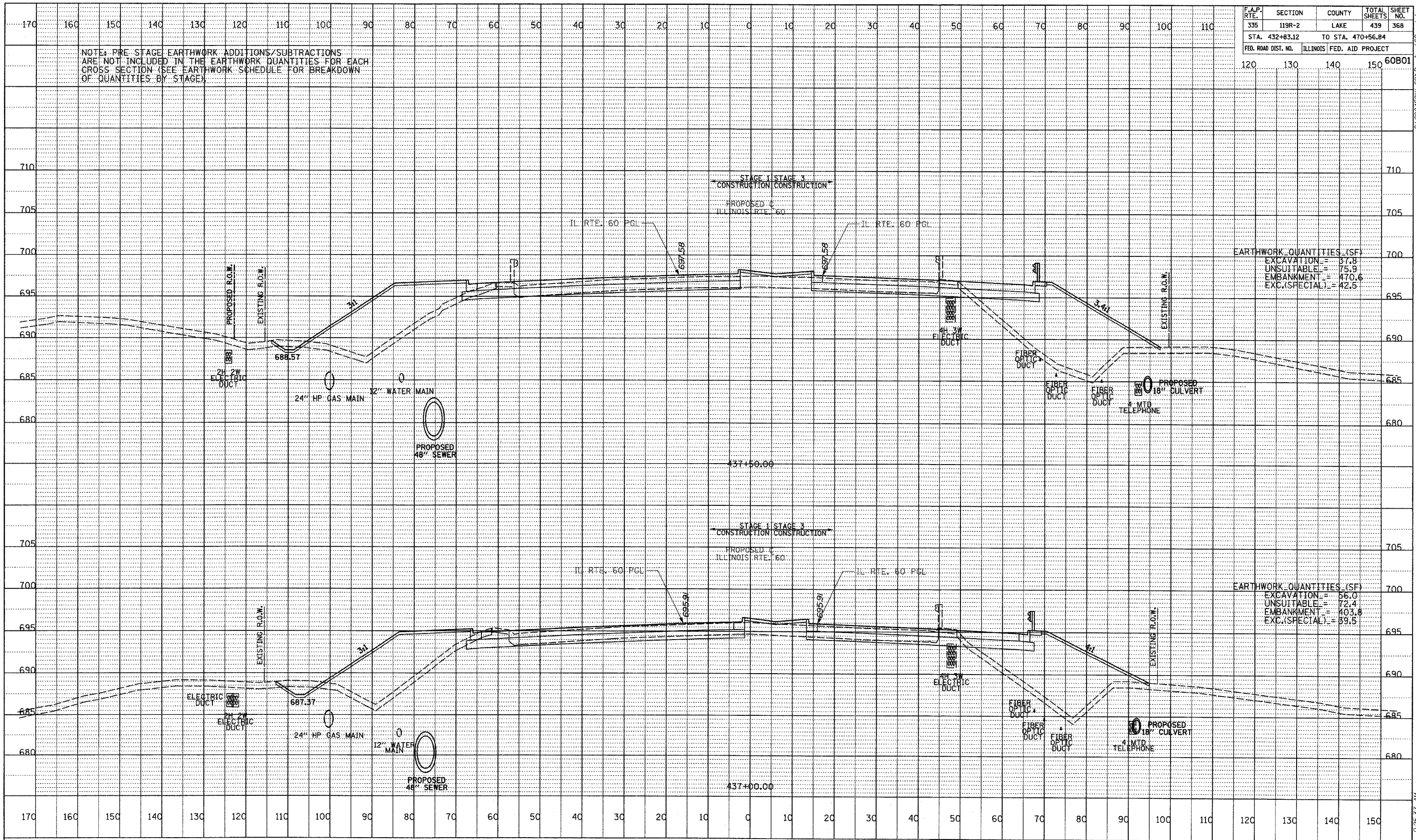


F.A.P. RTE.	SECTION	COUNTY	TOTAL SHEETS	SHEET NO.
335	119R-2	LAKE	439	368
STA. 432+83.12		TO STA. 470+56.84		
FED. ROAD DIST. NO.		ILLINOIS FED. AID PROJECT		

NOTE: PRE-STAGE EARTHWORK ADDITIONS/SUBTRACTIONS ARE NOT INCLUDED IN THE EARTHWORK QUANTITIES FOR EACH CROSS SECTION (SEE EARTHWORK SCHEDULE FOR BREAKDOWN OF QUANTITIES BY STAGE)

EARTHWORK QUANTITIES (SF)	
EXCAVATION	= 37.8
UNSUITABLE	= 75.9
EMBANKMENT	= 170.6
EXC.(SPECIAL)	= 42.5

EARTHWORK QUANTITIES (SF)	
EXCAVATION	= 56.0
UNSUITABLE	= 72.4
EMBANKMENT	= 403.8
EXC.(SPECIAL)	= 39.5



DATE	
BY	
REVIEWED	
NOTED	
GRADES CHECKED	
STRUCTURE NOTATIONS CHECKED	
NO.	

TYLIN INTERNATIONAL



ILLINOIS RTE. 60 (TOWNLIN RD)
STA. 437+00 TO STA. 437+50

PAGE 02 OF 08 (IL 60) Road vpr60xss1.dgn 9/25/07 9:25:53 AM