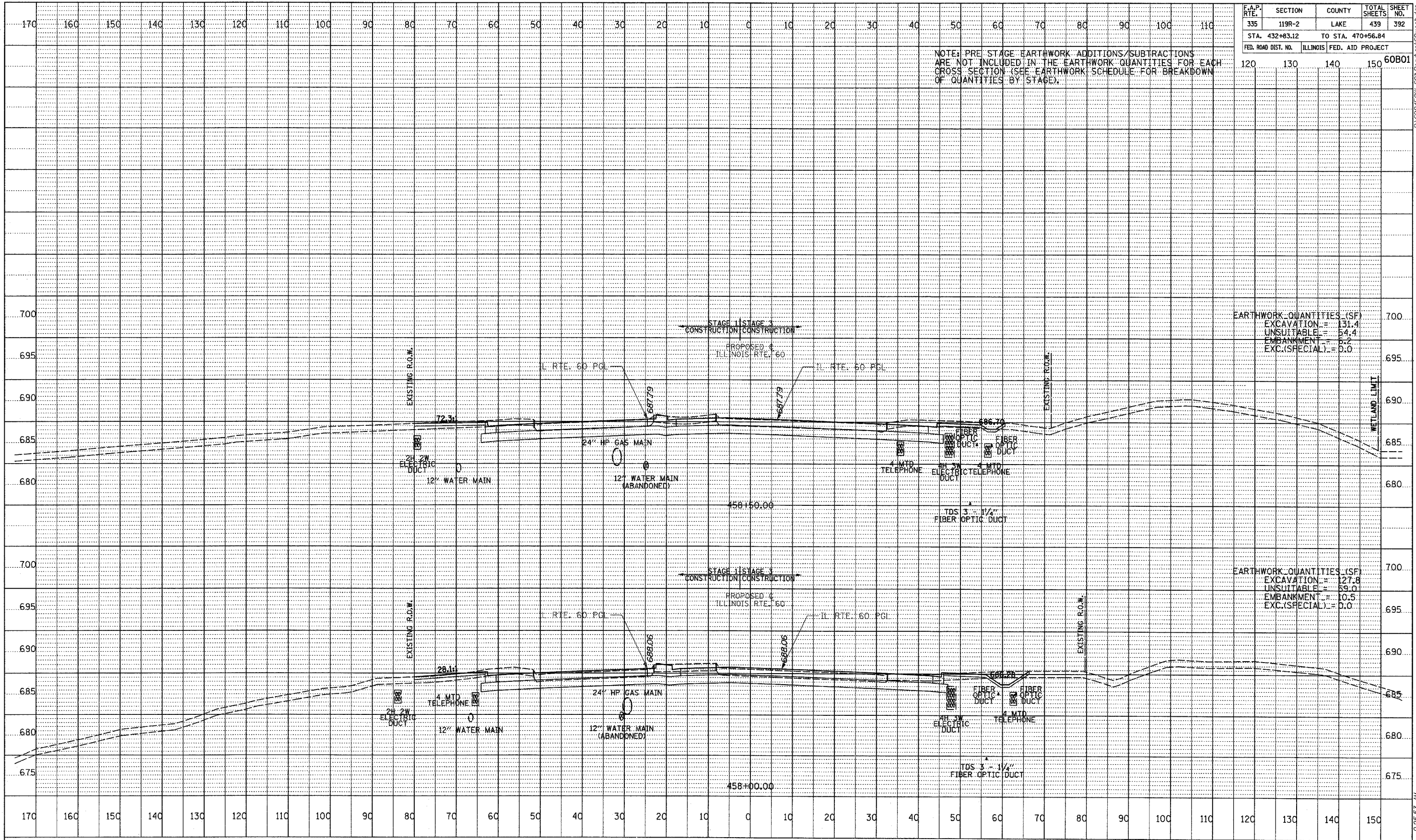


F.A.P. RTE.	SECTION	COUNTY	TOTAL SHEETS	SHEET NO.
335	119R-2	LAKE	439	392
STA. 432+63.12		TO STA. 470+56.84		
FED. ROAD DIST. NO.	ILLINOIS	FED. AID PROJECT		
120	130	140	150	60B01

NOTE: PRE STAGE EARTHWORK ADDITIONS/SUBTRACTIONS ARE NOT INCLUDED IN THE EARTHWORK QUANTITIES FOR EACH CROSS SECTION (SEE EARTHWORK SCHEDULE FOR BREAKDOWN OF QUANTITIES BY STAGE).

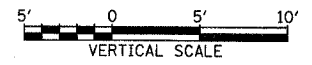
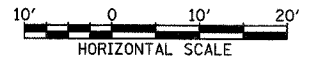
EARTHWORK QUANTITIES (SF)
 EXCAVATION = 131.4
 UNSUITABLE = 54.4
 EMBANKMENT = 8.2
 EXC.(SPECIAL) = 0.0

EARTHWORK QUANTITIES (SF)
 EXCAVATION = 127.8
 UNSUITABLE = 59.0
 EMBANKMENT = 10.5
 EXC.(SPECIAL) = 0.0



DATE: _____ BY: _____
 PROFILE DRAWING
 CHECKED: _____
 NO. _____
 STRUCTURE NOTATIONS CHFD

TYLIN INTERNATIONAL



ILLINOIS RTE. 60 (TOWNLIN RD)
 STA. 458+00 TO STA. 458+50

9:25:53 AM
 5/7/2007