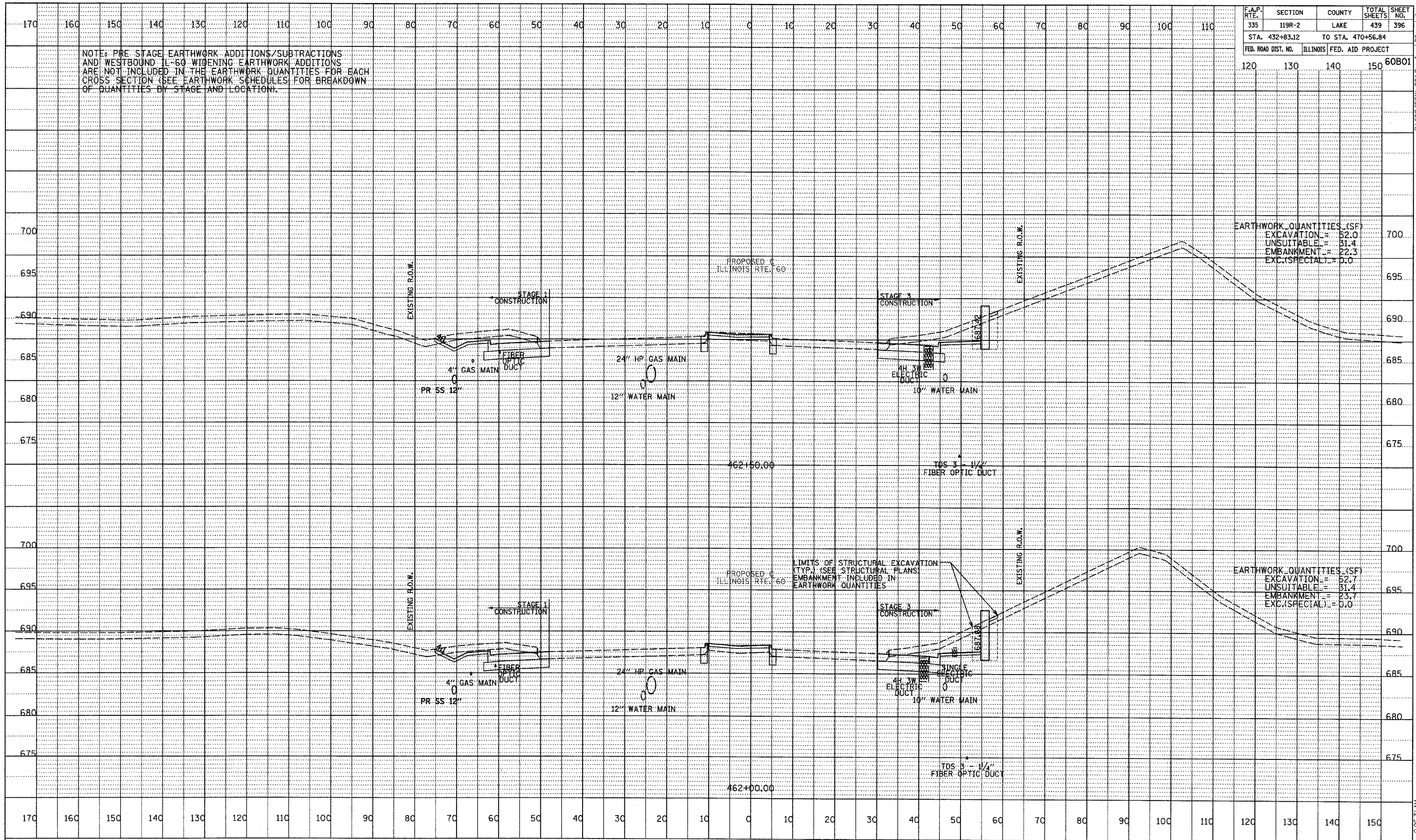


F.A.P. RTE.	SECTION	COUNTY	TOTAL SHEETS	SHEET NO.
335	119R-2	LAKE	439	396
STA. 432+83.12 TO STA. 470+56.84				
FED. ROAD DIST. NO.	ILLINOIS	FED. AID PROJECT		
	120	130	140	150
				60B01

NOTE: PRE-STAGE EARTHWORK ADDITIONS/SUBTRACTIONS AND WESTBOUND IL-60 WIDENING EARTHWORK ADDITIONS ARE NOT INCLUDED IN THE EARTHWORK QUANTITIES FOR EACH CROSS SECTION (SEE EARTHWORK SCHEDULES FOR BREAKDOWN OF QUANTITIES BY STAGE AND LOCATION).

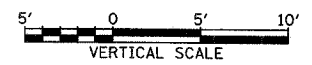
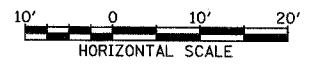


EARTHWORK QUANTITIES (SF)  
 EXCAVATION = 52.0  
 UNSUITABLE = 31.4  
 EMBANKMENT = 22.3  
 EXC.(SPECIAL) = 0.0

EARTHWORK QUANTITIES (SF)  
 EXCAVATION = 52.7  
 UNSUITABLE = 31.4  
 EMBANKMENT = 23.7  
 EXC.(SPECIAL) = 0.0

DATE	
BY	
PROFILE	
REVISED	
GRAPHS CHECKED	
NOTE BOOK	
NO.	
STRUCTURE	
NOTATION	
CHORD	

TYLIN INTERNATIONAL



ILLINOIS RTE. 60 (TOWNLIN RD)  
 STA. 462+00 TO STA. 462+50

P:\60245811\_60\Road\apk60\sshd07 5/7/2007 9:25:31 AM